

RSM小型螺旋混料机
RSM smaller spiral mixers



Rm立式混料机
RM vertical mixers



RSM大型螺旋混料机
RSM big spiral mixers



塑料混色机系列机型主要用于工业塑料颗粒的混合搅拌与存储,如塑料原料颗粒与回收料的搅拌混合,塑料颗粒与色母粒的搅拌混合,塑料颗粒与色母粉的搅拌混合等,具有混料均匀、快速等优点。桶内部均为不锈钢制造,防止对料污染,是塑料工业生产加工中不可缺少的辅助设备。

Plastic mixers are suitable for granules mixing,such as regrind and raw material mixing,granules and color masterbatch mixing,granules and masterbatch powder mixing etc.,it is characterized of mixing evenly and quickly.It is widely used for plastic extrusion,injection processing.



宁波北仑日宏机械制造有限公司
Ningbo Beilun Rhong Machinery Manufacturing Co.,Ltd

地址:浙江.宁波.北仑.小港街道.东岗碶.
Donggangqi,Xiaogang Subdistrict,Beilun,
Ningbo,Zhejiang Province,China.
T +86-574-55019010 , 0086 137 7723 9417
F +86-574-55019017
E-mail:rhong@plastic-auxiliary-equipment.com



wechat



website

更多咨询请访问:

www.rhongmachinery.com (EN)

RSM小型螺旋混料机
RSM smaller spiral mixers

RSM大型螺旋混料机
RSM big spiral mixers

Rm立式混料机
RM vertical mixers

Rm系列立式混色机为粉末、颗粒状物料混合机器，其理想的结构造型，使操作简单容易，维护清洗方便，混合速度快，效果佳。其主要用于塑料混合搅拌，也广泛应用于：粉末冶金、化工、陶瓷等行业，是一种理想的混合设备。

RM series vertical color mixer suitable for powder and granule mixing, the ideal structure and appearance, easy and simple for operation, quick mixing with fine mixing result and also easy for clean and maintenance. It is mainly used for plastic mixing and stirring and as well as widely used in the departments of powder metallurgy, pharmacy, chemicals, foodstuff, ceramic ware

内部全不锈钢制造,立式不锈钢
搅拌器,混料快速、均匀
made of stainless steel body inside,
vertical mixing blades,
mixing evenly and quickly

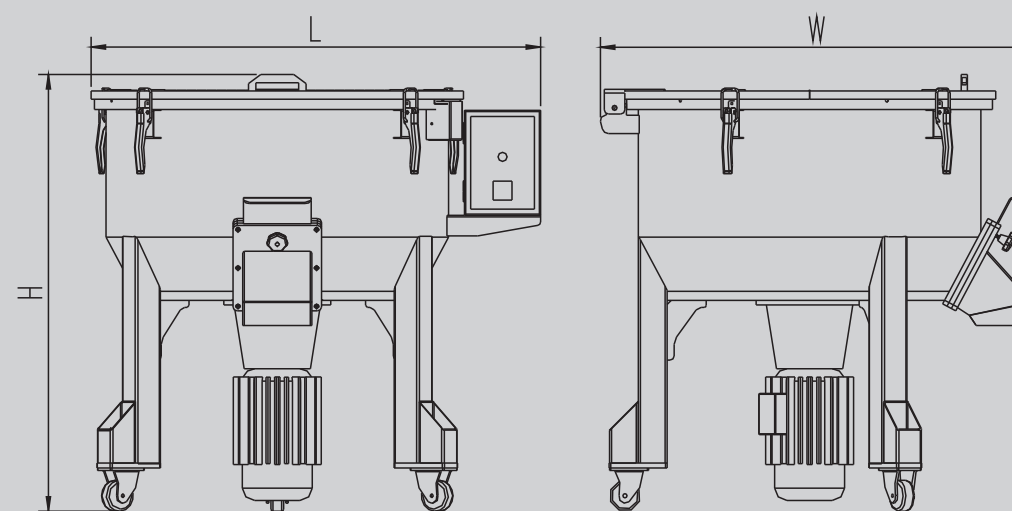
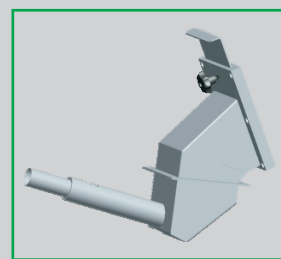
接近开关保护,桶盖打开后机器
自动关闭
proximity switch protection,
cover opened,
machine stop automatically

不锈钢放料口,可配置带吸料盒,
放料口,通过吸料机输送到注塑
机料斗
stainless steel discharge port,
optional purchase with suction
box, to convey material into
injection molding machine hopper
by auto loader

配备24小时定时器,到达设定的
混料时长后自动停止
24hr timer setting,
stop automatically after
reaching to set mixing time

方向脚轮,移动方便
Universal wheel
easy to move

可配置带吸料盒,放料口,通过吸料机输送到注塑机料斗
optional purchase with suction box, can conveying
material to injection molding machine hopper
by auto loader



规格表 Specifications

机型 Model		RM-25	RM-50	RM-100	RM-150	RM-200	RM-300
电机功率 motor power	kw	1.1	1.5	3	4	5.5	11
最大混料量 max-mixing capacity	kg/min	25/5	50/5	100/5	150/10	200/10	200/10
主轴转速 Rotor speed	rpm	80	80	80	80	80	80
重量 Weight	kg	80	100	210		395	450
外形尺寸 External size							
L	mm	700	860	1100	1100	1250	1250
W	mm	610	800	1050	1050	1220	1220
H	mm	920	1000	1330	1330	1400	1860

产品规格若有变更,恕不另行通知。
Please excuse for not note if some specifications of products are changed.

Note 注:

- 1) in general the mixing time is 5-10 minutes. 1) 一般混料时间为5-10分钟。
- 2) The voltage specification of machine is 3Φ,220/380V,50Hz. 2) 机器电压规格为3Φ, 220/380V, 50Hz. The voltage can be changed as you require.