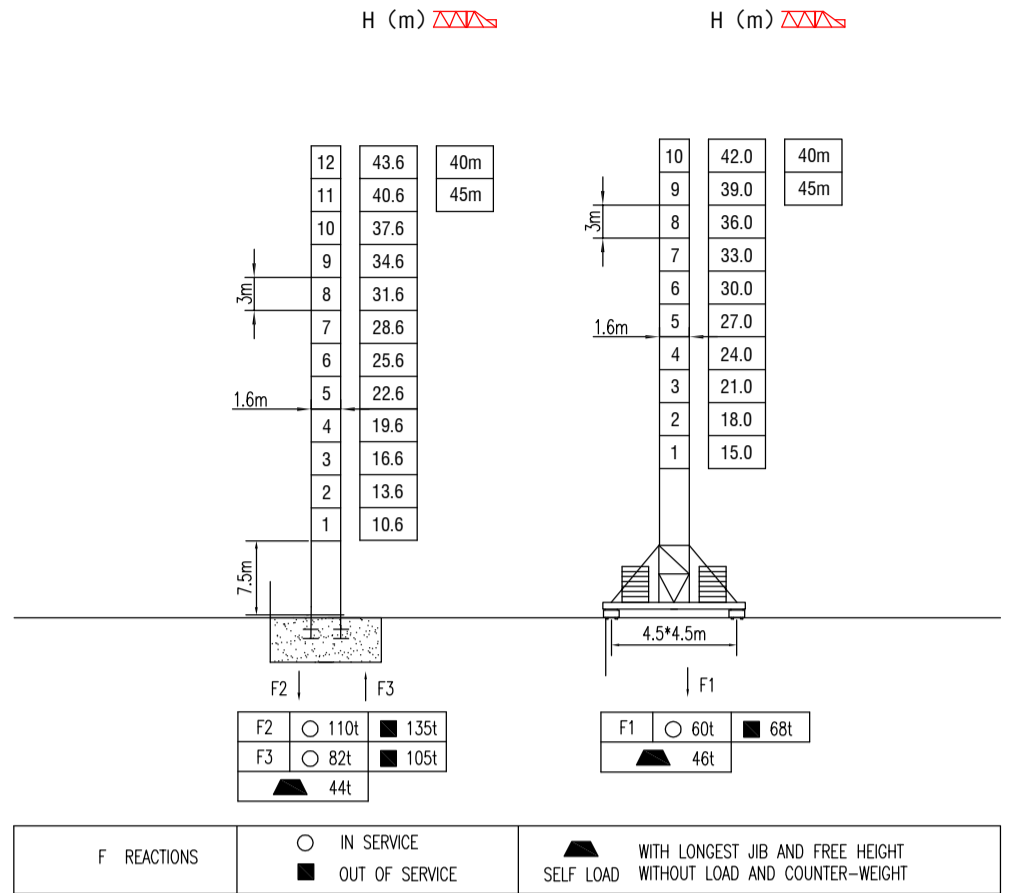
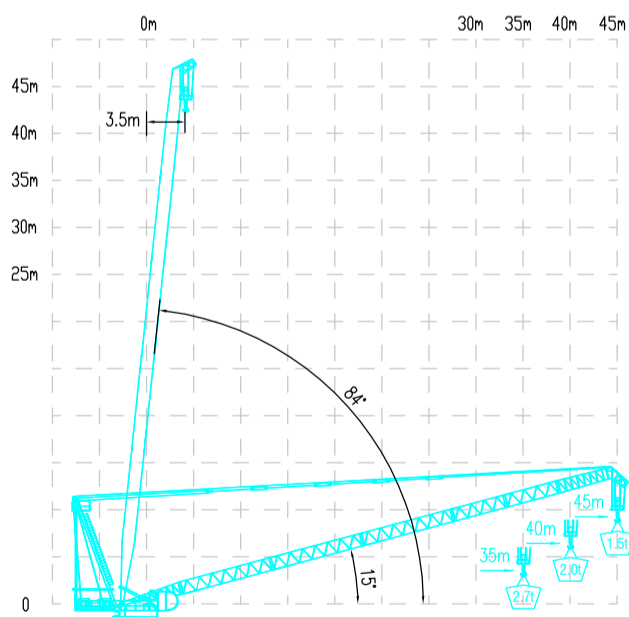


MILISCORP

MAST SECTION



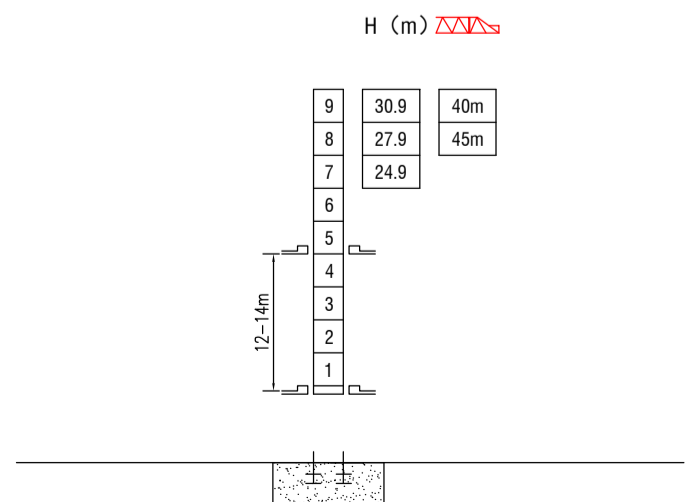
LOAD DIAGRAMS



TECHNICAL PARAMETER

| MECHANISMS | | | ⤴ | | ⤵ | | ⤶ | | ⤷ | |
|--------------------------|---|---------|-----------------------|-------|-------|------|------|------|-----|--------|
| | | | m/min | t | | | | | m | kw |
| Hoisting | ⬆ | 30LFT20 | 0-38 | 0-76 | 0-114 | 0-19 | 0-38 | 0-76 | 450 | 22 |
| | | | 3 | 1.5 | 1 | 6 | 3 | 1.5 | | |
| Luffing | ⤴ | 30DFT20 | min | 2.8 | | | | | | 22 |
| Slewing | ⦿ | 95RCV6 | r/min | 0-0.8 | | | | | | 95Nm*2 |
| Travelling | ⬅ | TVD324 | m/min | 25 | | | | | | 2.9x2 |
| Power supply | | | 380v.50Hz / 440v.60Hz | | | | | | | |
| Necessary electric power | | | 80KVA | | | | | | | |

INNER CLIMBING



* The technical information can not be published without approval. The specifications are not subject to legal constraints due to continually products improved, the performance data will be modified without notice.