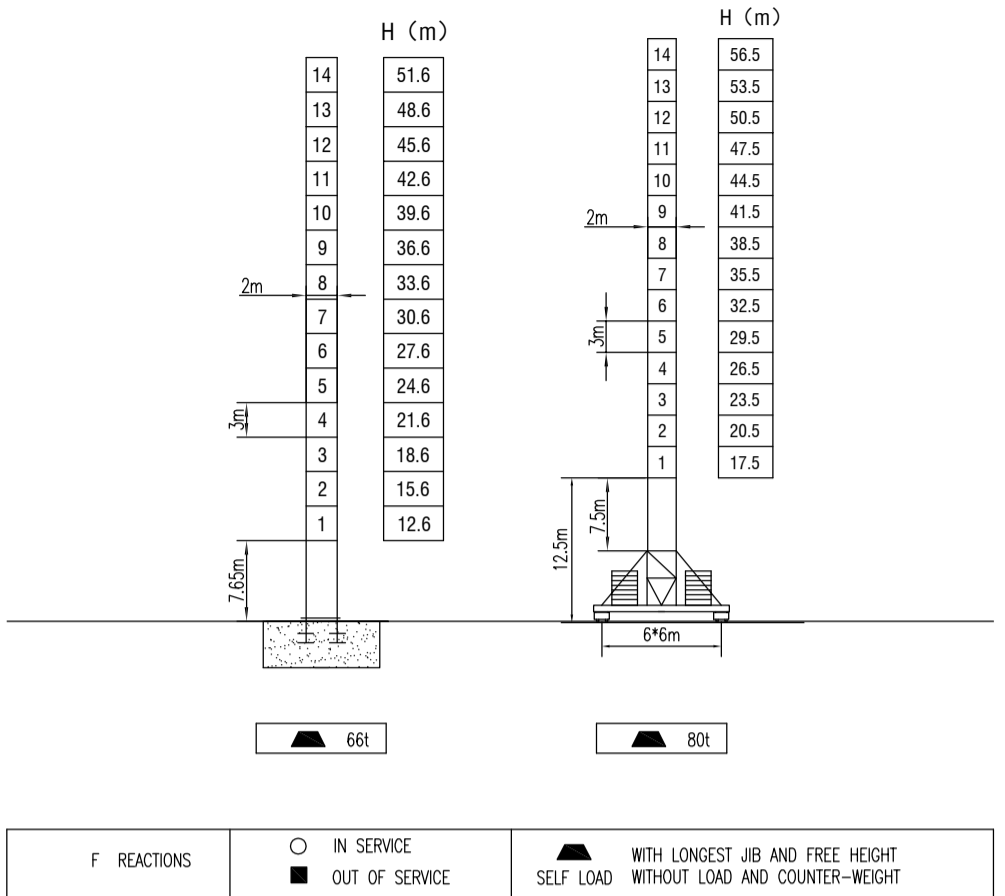
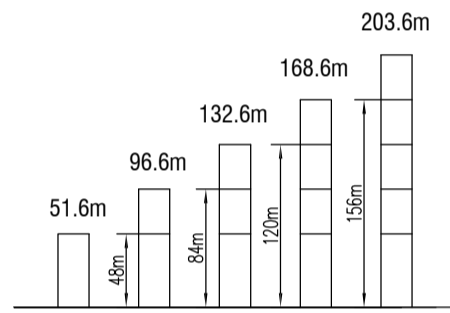


MILISCORP

MAST SECTION



ANCHORAGES



LOAD DIAGRAMS

Radius	R(Cmax)m/t	15	20	25	30	35	40	45	50	55	60	65	70	75	m
75m	18.5 / 12.0	12.0	11.44	8.82	7.1	5.89	4.99	4.3	3.75	3.29	2.92	2.6	2.35	2.2	t
	35.5 / 6.0	6.0													t
70m	21.3 / 12.0	12.0	9.97	8.08	6.74	5.74	4.97	4.36	3.86	3.45	3.1	2.8			t
	40.0 / 6.0	6.0													t
65m	22.9 / 12.0	12.0	10.88	8.84	7.4	6.34	5.51	4.85	4.32	3.88	3.5			t	
	43.2 / 6.0	6.0													t
60m	23.6 / 12.0	12.0	11.43	9.3	7.79	6.68	5.81	5.13	4.57	4.1			t		
	45.2 / 6.0	6.0													t
55m	24.8 / 12.0	12.0	11.96	9.74	8.17	7.0	6.1	5.38	4.8			t			
	40.6 / 6.0	6.0													t
50m	25.0 / 12.0	12.0	10.1	8.48	7.27	6.34	5.6			t					
	46.5 / 6.0	6.0													t
45m	25.5 / 12.0	12.0	10.49	8.81	7.78	6.6			t						
	45.0 / 6.0	6.0													t

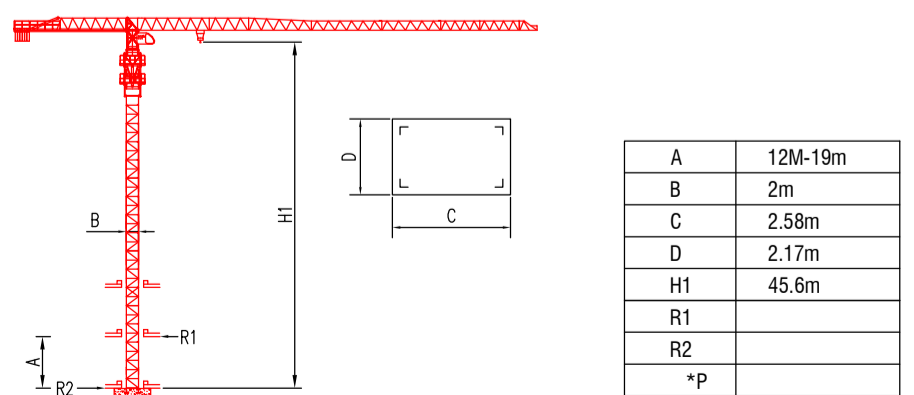
COUNTER-JIB BALLAST

Radius	Ballast Weight
75m	20.96t
70m	18.96t
65m	18.96t
60m	18.25t
55m	17.42t
50m	16.59t
45m	15.88t

TECHNICAL PARAMETER

MECHANISMS		55LVF		70RCS30			9SVF			RCV145		4TVF	
Hoisting	⬆️	m/min	0-40	0-80	0-120	0-20	0-40	0-60	630	m	kw	55	
		t	6	3	1.5	12	6	3					
Trolleying	⬅️	m/min	40	80	20	40			>533			4	
		t	6	3	12	6							
Slewing	🌀	r/min	0-0.6			0-0.8					9*2	145Nm*2	
		t	6			3							
Travelling	➡️	m/min	0-30								4*4		
Power supply		380v.50Hz / 440v.60Hz											
Necessary electric power		115KVA											

INNER CLIMBING



* The technical information can not be published without approval. The specifications are not subject to legal constraints due to continually products improved, the performance data will be modified without notice.