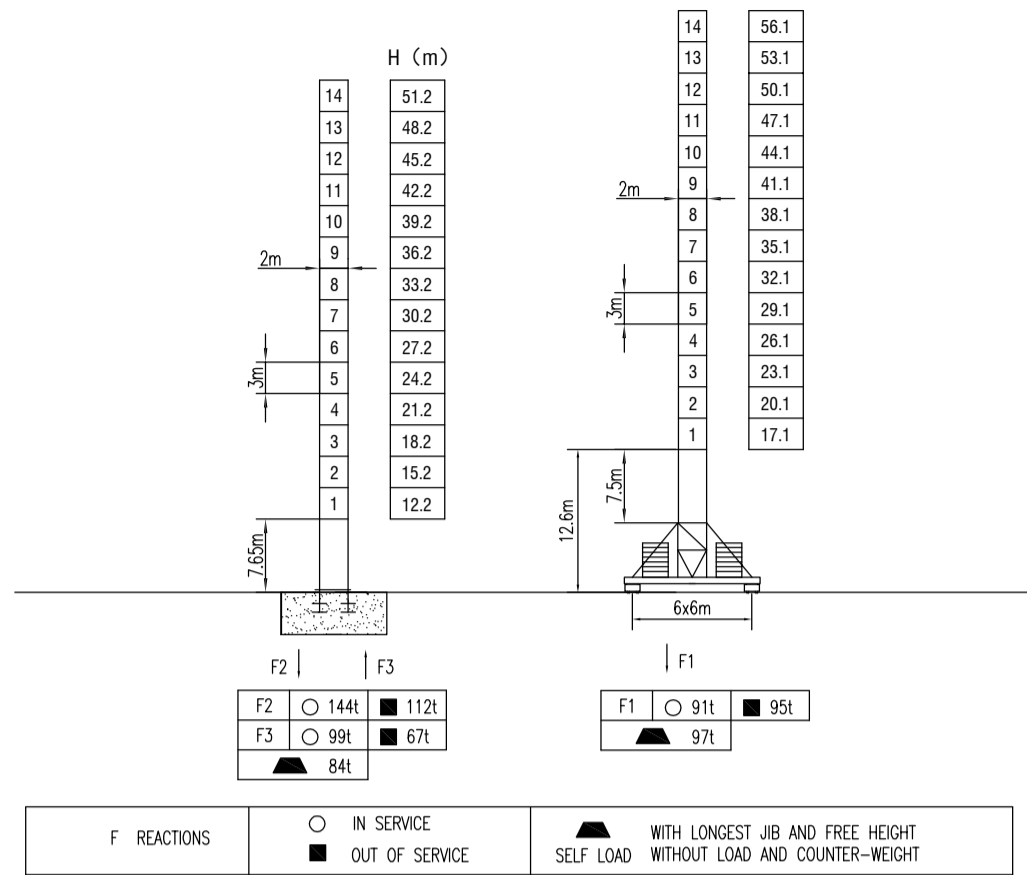
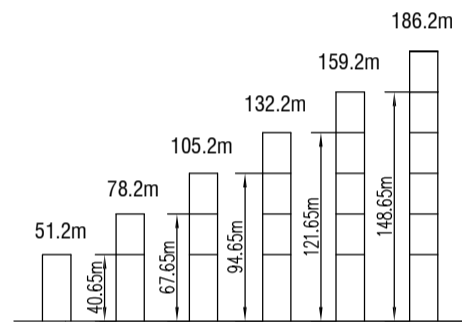


MILISCORP

MAST SECTION



ANCHORAGES



LOAD DIAGRAMS

Radius	3.1	R(Cmax)m/t	15	20	25	30	35	40	45	50	55	60	65	70	m
70m	⚙️	16.0 / 16.0		14.0	11.6	9.27	7.72	6.56	5.67	4.96	4.38	3.9	3.49	3.14	t
		34.37 / 8.0		8.0	7.88	6.72	5.83	5.12	4.54	4.06	3.65	3.3			t
65m	⚙️	16.4 / 16.0		14.0	11.9	9.6	8.0	6.81	5.89	5.16	4.56	4.06	3.64		t
		35.48 / 8.0		8.0	6.97	6.05	5.32	4.72	4.22	3.80					t
60m	⚙️	16.5 / 16.0		14.0	12.5	9.97	8.31	7.08	6.13	5.37	4.75	4.24			t
		36.72 / 8.0		8.0	7.24	6.29	5.53	4.91	4.4						t
55m	⚙️	17.4 / 16.0		15.0	13.0	10.3	8.61	7.34	6.36	5.58	4.94				t
		38.0 / 8.0		8.0	7.5	6.52	5.74	5.1							t
50m	⚙️	18.1 / 16.0		15.0	11.5	10.6	8.84	7.54	6.54	5.74					t
		38.75 / 8.0		8.0	7.7	6.7	5.9								t
45m	⚙️	18.4 / 16.0		14.5	13.0	11.0	9.18	7.84	6.8						t
		39.18 / 8.0		8.0	7.0	6.96									t

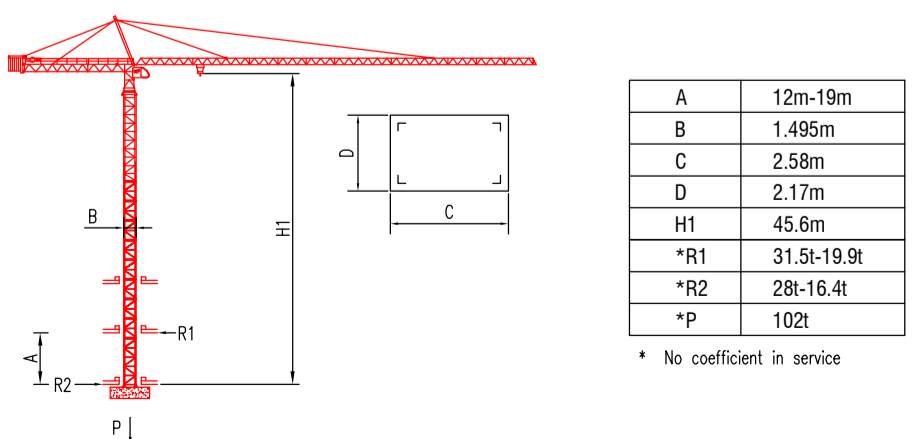
COUNTER-JIB BALLAST

Radius	Counter-jib Ballast (t)
70m	21.6t
65m	20.94t
60m	17.34t
55m	17.15t
50m	16.3t
45m	13.55t

TECHNICAL PARAMETER

MECHANISMS		⚙️		⚙️		⚙️		⚙️		⚙️	
Hoisting	⬆️	75LVF	m/min	0-4	0-60	0-80	0-0	0-30	0-40	600	75
		t		8	4	2	16	8	4		
70RCS40	⬆️	m/min		30	60	15	30			600	51.5
		t		8	4	16	8				
Trolleying	⬅️	7.5TVF		0-60 m/min							7.5
		8T3V8		17/42/84 m/min							90Nm
Slewing	⦿	9SVF		0-0.6r/min							9x2
		RVC145		0-0.8 r/min							145Nm ^{x2}
Travelling	⬅️	5.5TRVF		0-30 m/min							5.5x4
Power supply		380v.50Hz / 440v.60Hz									
Necessary electric power		130KVA									

INNER CLIMBING



* The technical information can not be published without approval. The specifications are not subject to legal constraints due to continually products improved, the performance data will be modified without notice.