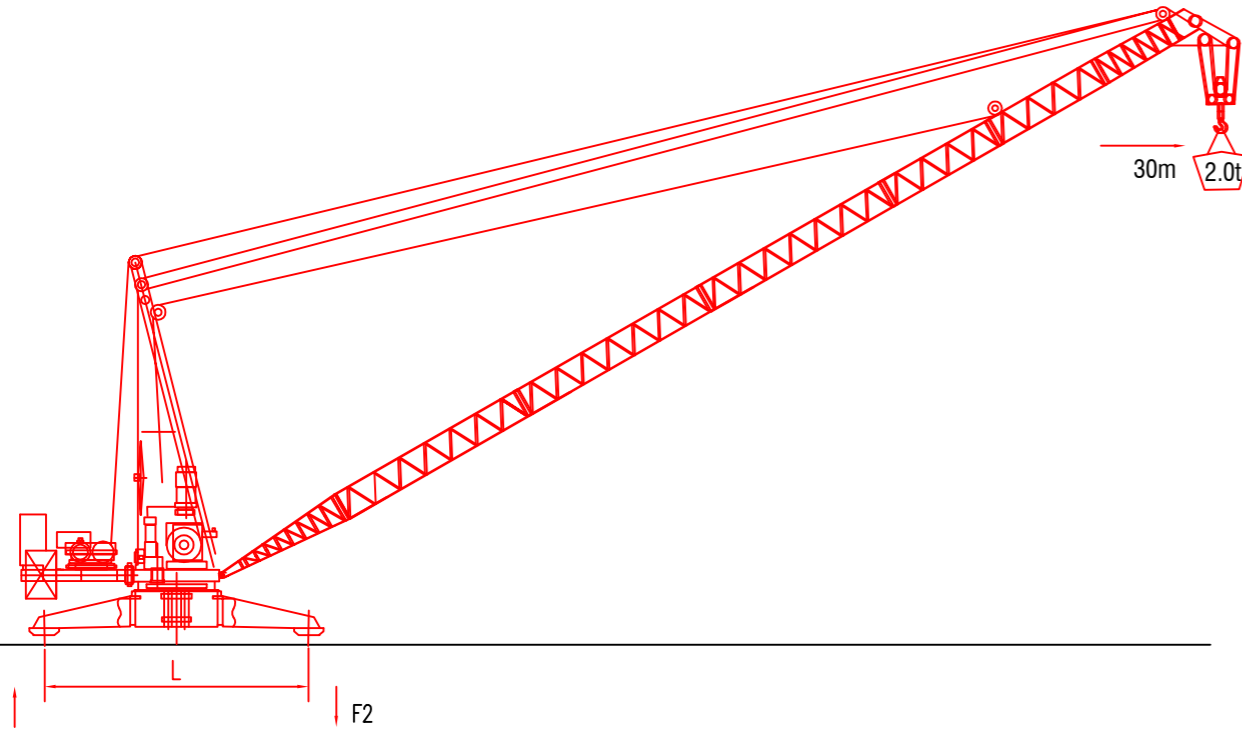


TECHNICAL PARAMETER



L (m)	F1 (t)	F2 (t)	Weight (t)
5.445	16.9	28.2	11.9

MECHANISMS										m	kw
Hoisting		30LFT20	m/min	0-5.4	0-30	0-60	0-2.7	0-15	0-30	500	30
			t	4	4	2	8	8	4		
Trolleying		22DFT	m/min	(15°-84°)3						22	
Slewing		RCV95	r/min	0-0.7						95Nm*2	
Power supply				380v.50Hz / 440v.60Hz							
Necessary electric power				90KVA							

LOAD DIAGRAMS

30m		R(m)							m
		18.5	22	24	25	26	28	30	
		8.0	6.7	6.3	6.0	5.6	3.9	1.9	t
		4.0	4.0	4.0	4.0	4.0	4.0	2.0	t