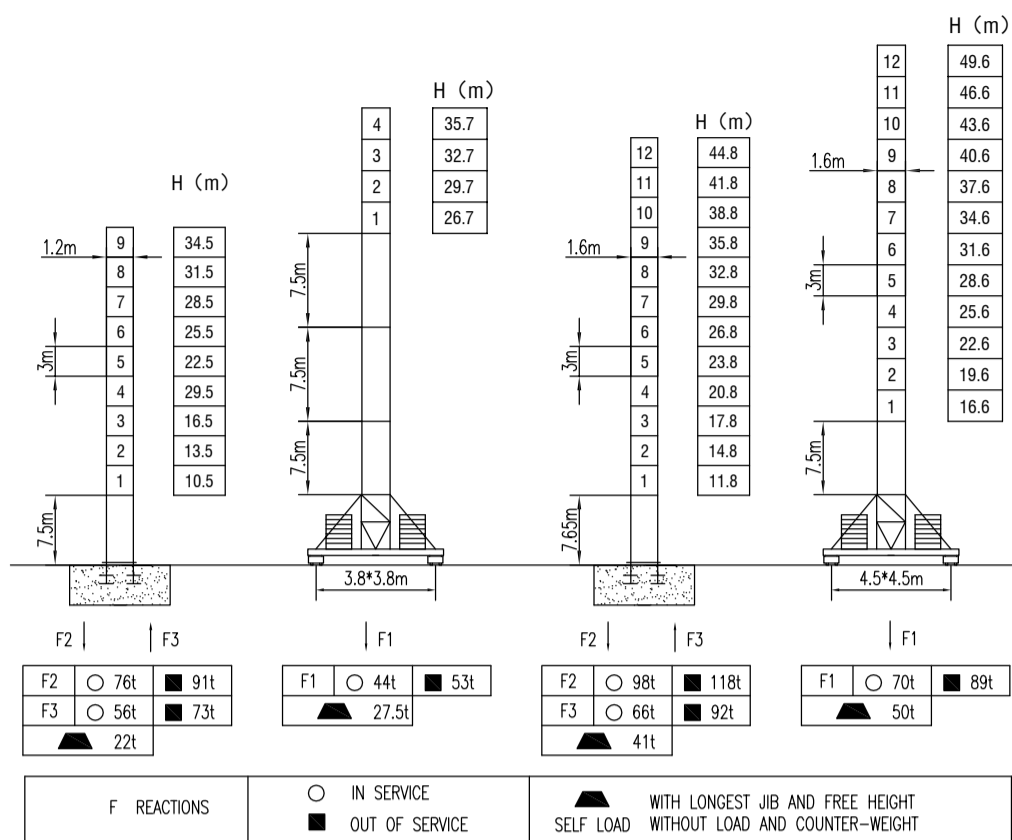
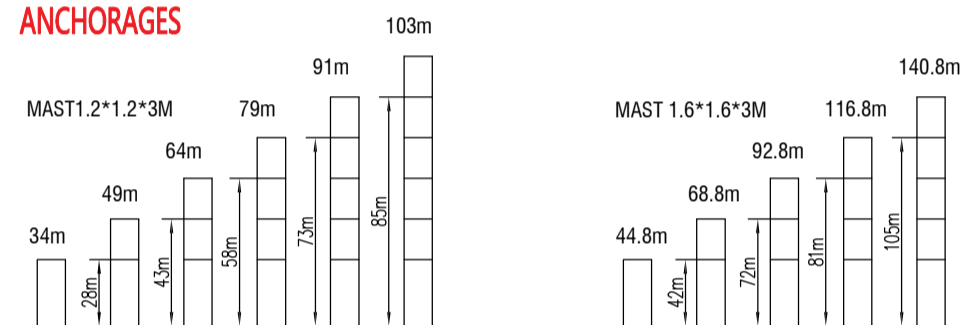


MAST SECTION



ANCHORAGES



LOAD DIAGRAMS

Radius (m)	3.1	15	17	20	22	25	28	30	32	35	40	45	50
50m	5.00	4.30	3.60	3.20	2.70	2.50	2.40	2.20	2.00	1.70	1.50	1.30	t
45m	5.00	4.60	3.80	3.40	2.90	2.50	2.40	2.20	2.00	1.85	1.60	t	t
40m	5.00	4.80	3.90	3.50	3.00	2.50	2.50	2.45	2.20	1.90	t	t	t
35m	5.00	4.80	3.90	3.50	3.00	2.75	2.50	2.45	2.20	t	t	t	t
30m	5.00	4.80	3.90	3.50	3.00	2.75	2.40	t	t	t	t	t	t

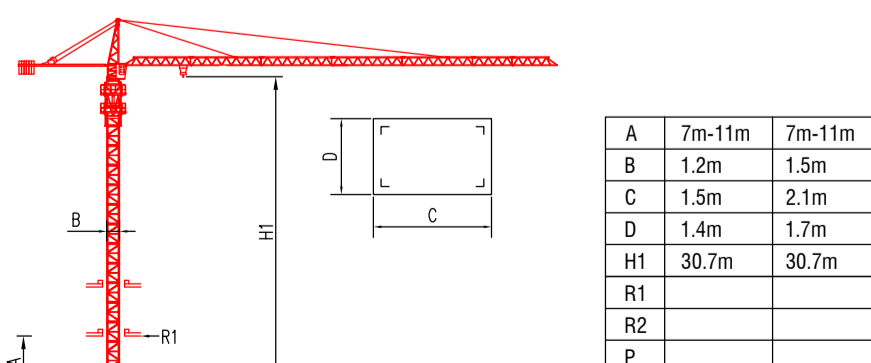
COUNTER-JIB BALLAST

Height (m)	Counter-jib Ballast (t)
50m	12.7t
45m	12.7t
40m	10.85t
35m	9.75t
30m	9.05t

TECHNICAL PARAMETER

MECHANISMS		Hoisting		Trolleying		Slewing		Travelling		Power supply	
Hoisting	22LVF	m/min	0-32	0-52	0-72	0-16	0-26	0-36	≥400	22	
		t	3	3	1	6	4	2	≥300	24/24/5.4	
Hoisting	QTJ63	m/min	8.5	39.7	79.4	4.2	19.8	39.7	≥300	24/24/5.4	
		t	3	3	1.5	6	6	3	≥300	24/24/5.4	
Trolleying	3TVF	0-45 m/min								3	
	QTB4.0	40/20 m/min								3.3/2.2	
Slewing	5.5SVF	0-0.8 r/min								5.5x2	
	QTH80	0-0.6 r/min								3.7x2	
Travelling	4TRVF	0-30 m/min								2x4	
Power supply		380v.50Hz / 440v.60Hz									
Necessary electric power		60KVA / 32KVA									

INNER CLIMBING



* No coefficient in service
* The technical information can not be published without approval. The specifications are not subject to legal constraints due to continually products improved, the performance data will be modified without notice.