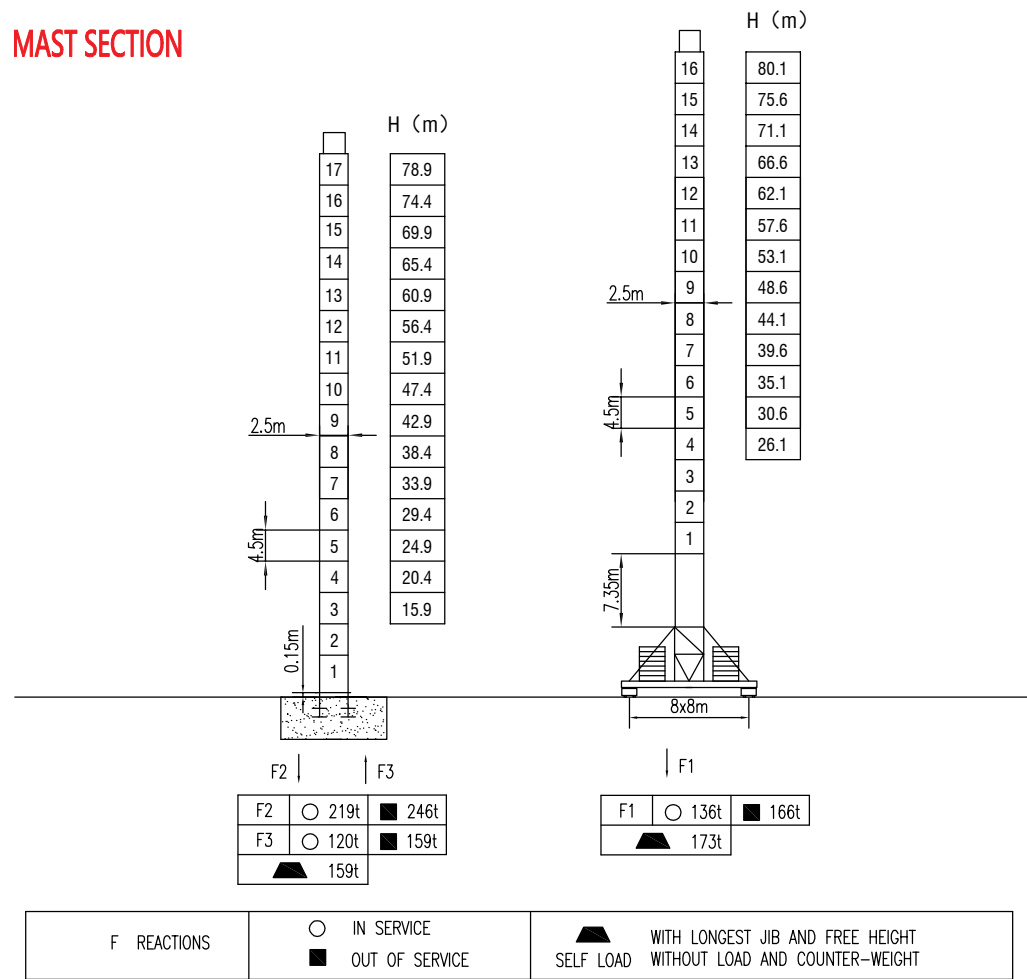
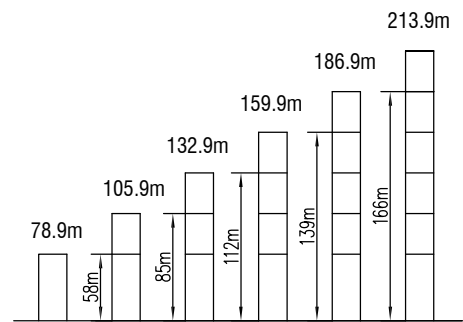


MAST SECTION



ANCHORAGES



LOAD DIAGRAMS

Radius	3.9	R(Cmax)m/t	30	33	37	40	43	47	50	53.5	57	60	63	70	m			
70m	⚙️	30.0 / 16.0	16.0	14.4	12.5	11.5	10.15	8.95	8.35	7.65	6.95	6.55	6.15	5.35	t			
		43.0 / 10.4	10.4										9.3	8.7	8.0	7.3	6.9	6.5
60m	⚙️	30.0 / 16.0	16.0	15.0	13.2	12.0	10.85	9.85	9.25	8.35	7.65	6.35			t			
		43.0 / 11.2	11.2										10.2	9.6	8.7	8.0	7.7	t
50m	⚙️	32.0 / 16.0	16.0	13.8	12.5	11.15	10.05	9.25							t			
		43.0 / 11.5	11.5										10.4	9.6			t	
40m	⚙️	33.0	37	40											m			
		16.0	16.1	12.7											t			

COUNTER-JIB BALLAST

Radius	Counter-jib Ballast (t)
70m	25t
60m	21.6t
50m	18.2t
40m	13.2t

TECHNICAL PARAMETER

MECHANISMS		⚙️		⚙️		⚙️		⚙️		m	kw		
Hoisting	⬆️	75LVF	m/min	0-4	0-60	0-80	0-0	0-30	0-40	600	75		
		t	8	4	2	16	8	4					
Hoisting	⬆️	70RCS40	m/min	30		60		15		30		600	51.5
		t	8		4		16		8				
Trolleying	⬅️➡️	7.5TVF	0-60 m/min									7.5	
		8T3V8	17/42/84 m/min									90Nm	
Slewing	🌀	9SVF	0-0.6r/min									9x2	
		RVC145	0-0.8 r/min									145Nm x2	
Travelling	⚙️	5.5TRVF	0-30 m/min									5.5x6	
Power supply		380v.50Hz / 440v.60Hz											
Necessary electric power		130KVA											

\* The technical information can not be published without approval. The specifications are not subject to legal constraints due to continually products improved, the performance data will be modified without notice.