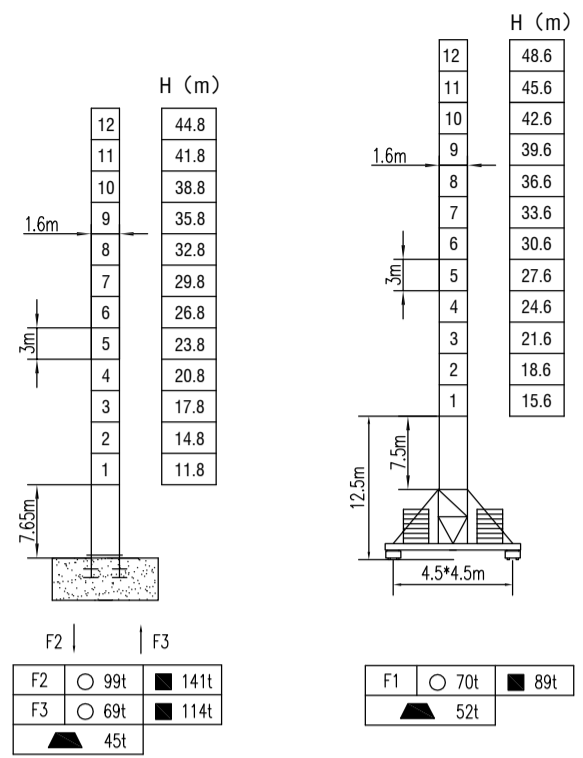
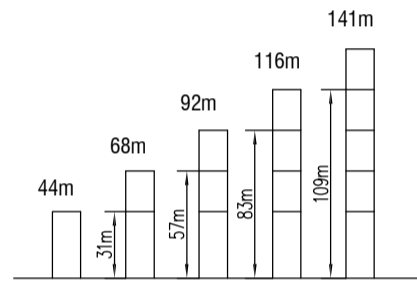


MAST SECTION



F REACTIONS	○ IN SERVICE ■ OUT OF SERVICE	■ WITH LONGEST JIB AND FREE HEIGHT SELF LOAD ■ WITHOUT LOAD AND COUNTER-WEIGHT
-------------	----------------------------------	---

ANCHORAGES



LOAD DIAGRAMS

Radius	3.0	12	20	24	28	32	36	40	44	48	52	56	m
56m	8.00	4.5	3.6	3.0	2.6	2.2	2.0	1.7	1.6	1.4	1.3	1.3	t
		4.0	3.6	3.0	2.6	2.2	2.0	1.7	1.4	1.3	1.3		t
Radius	3.0	12	14	22	26	30	34	38	42	46	50	m	
50m	8.00	6.7	4.0	3.3	2.8	2.4	2.1	1.9	1.7	1.5	1.5	t	
		4.0	3.3	2.8	2.4	2.1	1.9	1.7	1.5	1.5		t	
Radius	3.0	12	16	22	24	28	32	36	40	45	m		
45m	8.00	5.8	4.0	3.6	3.0	2.6	2.2	2.0	1.8	1.8	t		
		4.0	3.6	3.0	2.6	2.2	2.0	1.8	1.8		t		

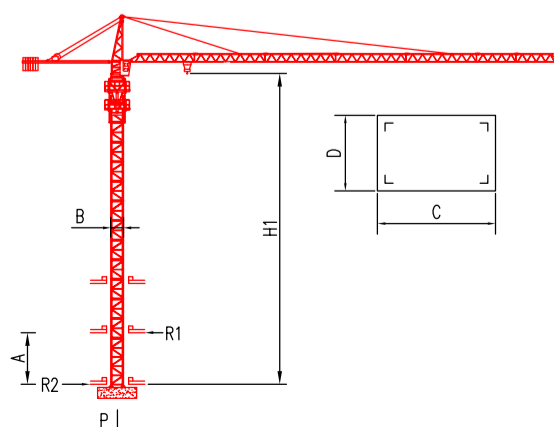
COUNTER-JIB BALLAST

56m	18.5t
50m	14.05t
45m	11.5t

TECHNICAL PARAMETER

MECHANISMS		m/min		r/min		m		kw		
Hoisting	37LVF	m/min	0-3.6	0-68	0-102	0-1.8	0-34	0-51	≥450	37
		t	4	2	1	8	4	2	≥400	24/24/5.4
Hoisting	QTJ80	m/min	34	68	17	34				
		t	4	2	8	4				
Trolleying	4TVF	0-55 m/min								4
	QTB4.0	40/20 m/min								3.3/2.2
Slewing	5.5SVF	0-0.8 r/min								5.5x2
	RCV95	0-0.68 r/min								95Nm _x 2
Travelling	4TRVF	0-30 m/min								2x4
Power supply		380v.50Hz / 440v.60Hz								
Necessary electric power		60KVA / 50KVA								

INNER CLIMBING



Sheet Type Mast		
A	7m-11m	12m-14m
B	1.6m	1.6m
C	2.15m	2.31m
D	1.80m	1.77m
H1	26.8m	43.3m
R1		
R2		
P		

* No coefficient in service

* The technical information can not be published without approval. The specifications are not subject to legal constraints due to continually products improved, the performance data will be modified without notice.