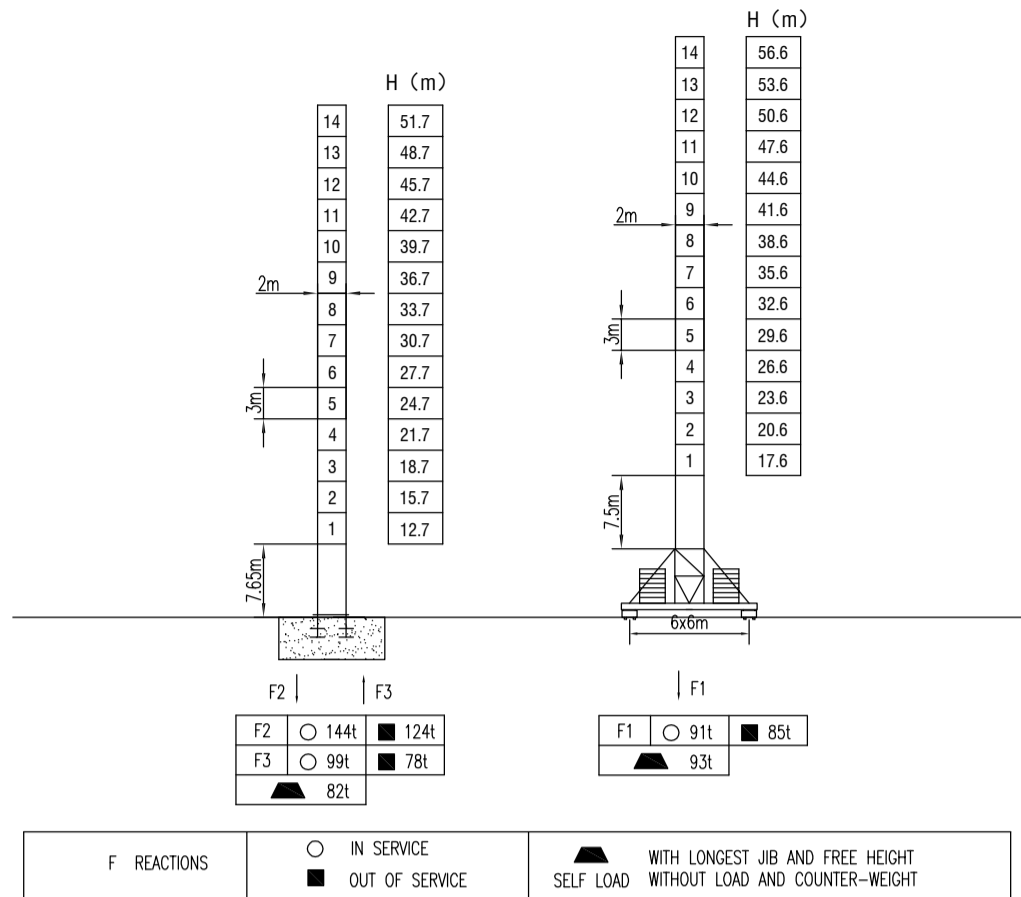
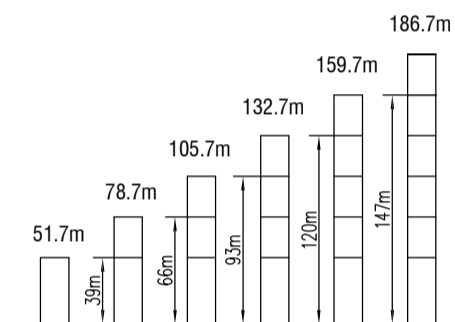


MAST SECTION



ANCHORAGES



LOAD DIAGRAMS

Radius	3.1	R(Cmax)m/t	15	20	25	30	35	40	45	50	55	60	65	70	m
70m		20.6 / 12.0	12.0	9.53	7.6	6.24	5.25	4.45	3.83	3.32	2.9	2.55	2.25		t
		40.0 / 6.0					6.0	5.2	4.58	4.07	3.65	3.3	3.0		t
65m		23.4 / 12.0	12.0	11.1	8.92	7.36	6.21	5.25	4.61	4.03	3.55	3.15			t
		45.0 / 6.0					6.0	5.36	4.78	4.3	3.9				t
60m		23.4 / 12.0	12.0	11.1	8.92	7.36	6.21	5.25	4.61	4.03	3.55				t
		45.0 / 6.0					6.0	5.36	4.78	4.3					t
55m		23.5 / 12.0	12.0	11.9	8.95	7.39	6.23	5.25	4.62	4.05					t
		45.0 / 6.0					6.0	5.37	4.8						t
50m		24.3 / 12.0	12.0	11.6	9.33	7.71	6.51	5.75	5.15						t
		47.0 / 6.0					6.0	5.6							t

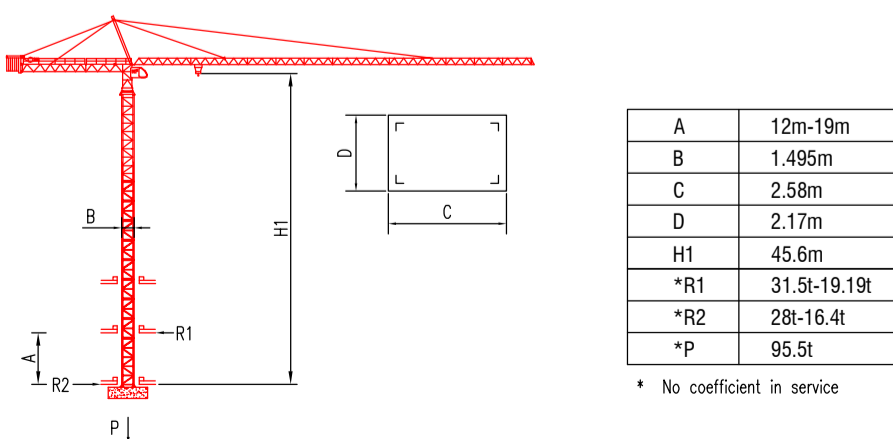
COUNTER-JIB BALLAST

Radius	Counter-jib ballast
70m	19.1t
65m	18.2t
60m	16.4t
55m	15.1t
50m	13.8t

TECHNICAL PARAMETER

MECHANISMS										m	kw
Hoisting	55LVF	m/min	0-40	0-80	0-120	0-20	0-40	0-60	630	55	
		t	6	3	1.5	12	6	3			
Hoisting	70RCS30	m/min	40		80	20		40	>533	51.5	
		t	6		3	12		6			
Trolleying	4TVF	0-55 m/min								4	
	4T3V4	7.5/28/57 m/min									
Slewing	9SVF	0-0.6 r/min								9*2	
	RVC145	0-0.8 r/min									
Travelling	RT443	15-30 m/min								3.7x4	
Power supply		380v.50Hz / 440v.60Hz									
Necessary electric power		115KVA									

INNER CLIMBING



* The technical information can not be published without approval. The specifications are not subject to legal constraints due to continually products improved, the performance data will be modified without notice.