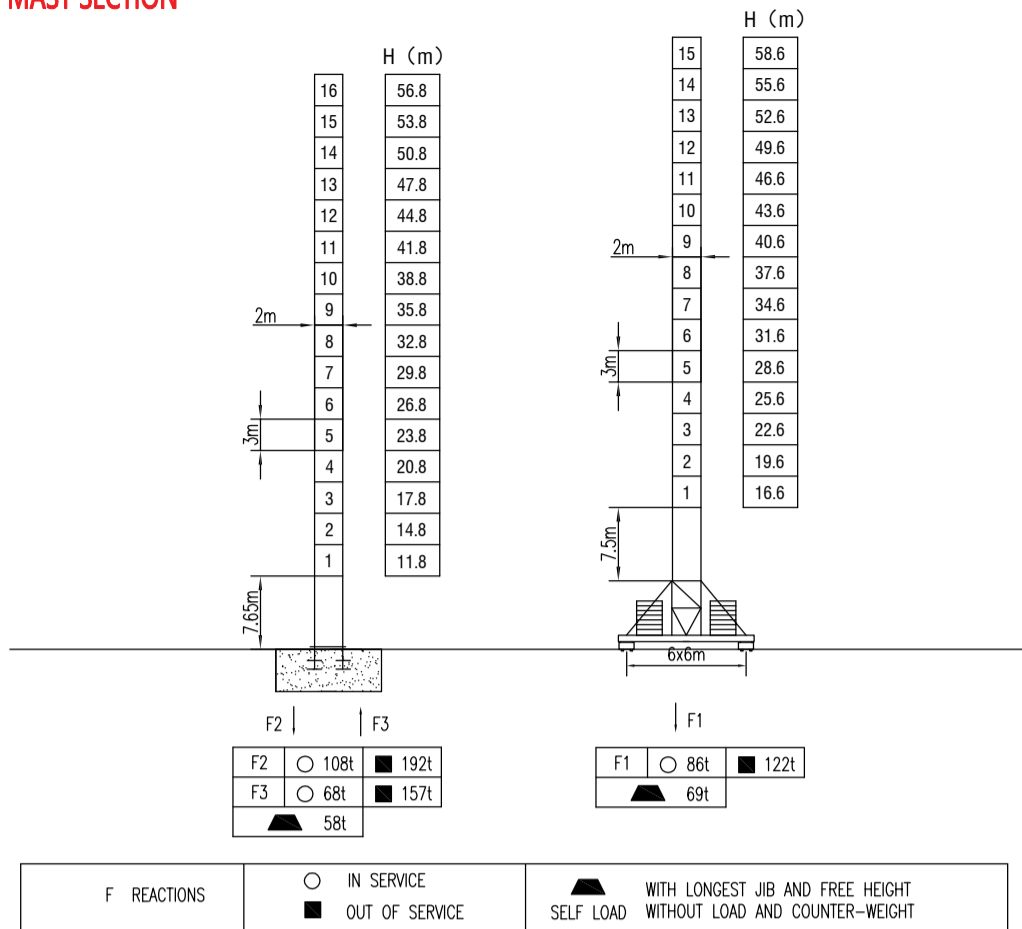
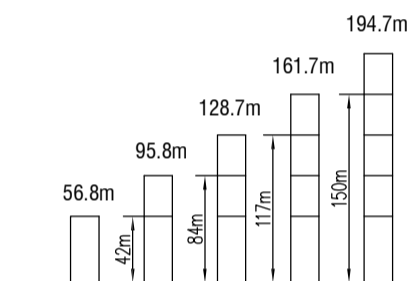


MILISCORP

MAST SECTION



ANCHORAGES



LOAD DIAGRAMS

Radius	3.0	R(Cmax)mt	15	20	25	30	35	40	45	50	55	60	65	70	m
70m	15.0 / 10.0	10.00	7.30	5.60	4.50	3.80	3.10	2.50	2.20	1.90	1.70	1.40	1.20		t
	29.0 / 5.0		5.00	4.80	4.10	3.40	2.80	2.50	2.20	2.00	1.70	1.50		t	
65m	17.0 / 10.0	10.00	8.20	6.40	5.00	4.00	3.30	2.70	2.40	2.20	1.80	1.50		t	
	30.0 / 5.0		5.00	4.30	3.60	3.00	2.70	2.50	2.10	1.80				t	
60m	18.0 / 10.0	10.00	8.60	6.80	5.30	4.20	3.50	2.90	2.70	2.50	2.20			t	
	32.0 / 5.0		5.00	4.50	3.80	3.20	3.00	2.80	2.50					t	
55m	18.0 / 10.0	10.00	8.60	6.80	5.30	4.30	3.60	3.00	2.70	2.50				t	
	32.0 / 5.0		5.00	4.60	3.90	3.30	3.00	2.80						t	

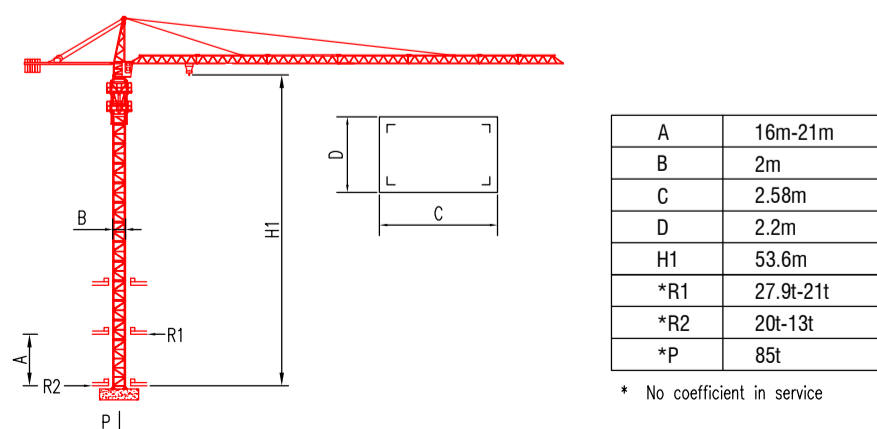
COUNTER-JIB BALLAST

Radius	Counter-jib ballast
70m	25t
65m	25t
60m	21t
55m	21t

TECHNICAL PARAMETER

MECHANISMS		Hoisting		Trolleying		Slewing		Travelling		Power supply		
Hoisting	45LVF	m/min	0-4.8	0-20	0-40	0-60	0-80	0-2.4	0-10	0-20	0-30	0-40
		t	5	5	5	2.5	1.25	10	10	10	5	2.5
Hoisting	70RCS25	m/min	0-5	0-11	0-21	0-42	0-85	0-2.5	0-5	0-11	0-21	0-42
		t	5	5	5	2.5	1.25	10	10	10	5	2.5
Trolleying	4TVF	0-55 m/min										4
	4T3V4	7.5/28/57 m/min										95Nm
Slewing	5.5SVF	0-0.7 r/min										5.5x2
	RVC95	0-0.8 r/min										95Nm x2
Travelling	RT443	15-30 m/min										3.7x4
Power supply		380v.50Hz / 440v.60Hz										
Necessary electric power		90KVA / 70KVA										

INNER CLIMBING



* The technical information can not be published without approval. The specifications are not subject to legal constraints due to continually products improved, the performance data will be modified without notice.