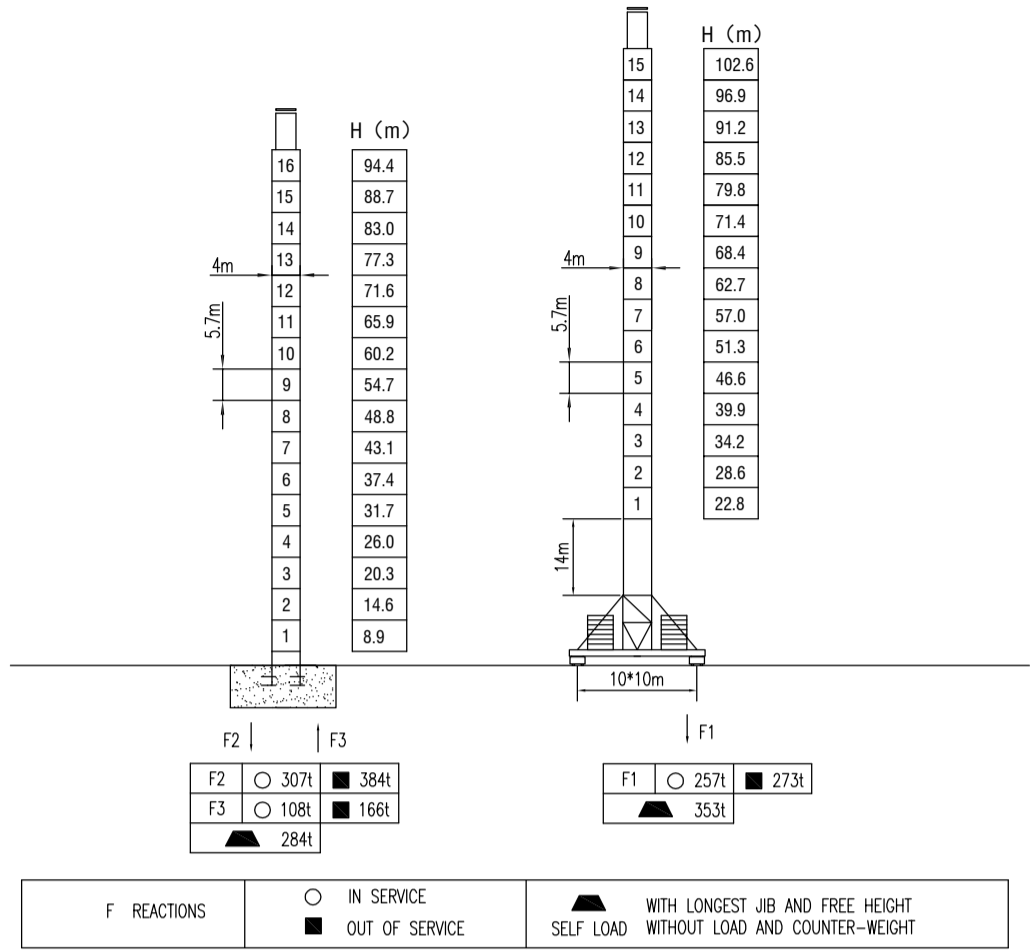


**MILISCORP**

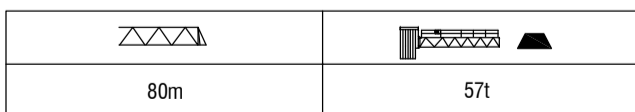
MAST SECTION



LOAD DIAGRAMS

Radius	5.7	R(Cmax)m/t	27	32	40	45	50	55	60	65	70	75	80	m
80m	27 / 32.0		32.0	24.3	20.3	15.2	14.3	12.4	10.9	9.6	8.5	7.5	6.7	t
	48.5 / 16.0					16.0	15.1	13.2	11.7	10.4	9.3	8.3	7.5	t

COUNTER-JIB BALLAST



TECHNICAL PARAMETER

MECHANISMS											
Hoisting	110LVF	m/min	0-32	0-64	0-96	0-16	0-32	0-48	500	110	
		t	16.0	8.0	4.0	32.0	16.0	8.0			
Trolleying	18DVF	0-60 m/min								11	
Stewing	9RVF	0-0.3 r/min								9*4	
Travelling	40TVF	0-8.5-17 m/min								5.2*8	
Power supply	380v.50Hz / 440v.60Hz										
Necessary electric power	280KVA										

\* The technical information can not be published without approval. The specifications are not subject to legal constraints due to continually products improved, the performance data will be modified without notice.