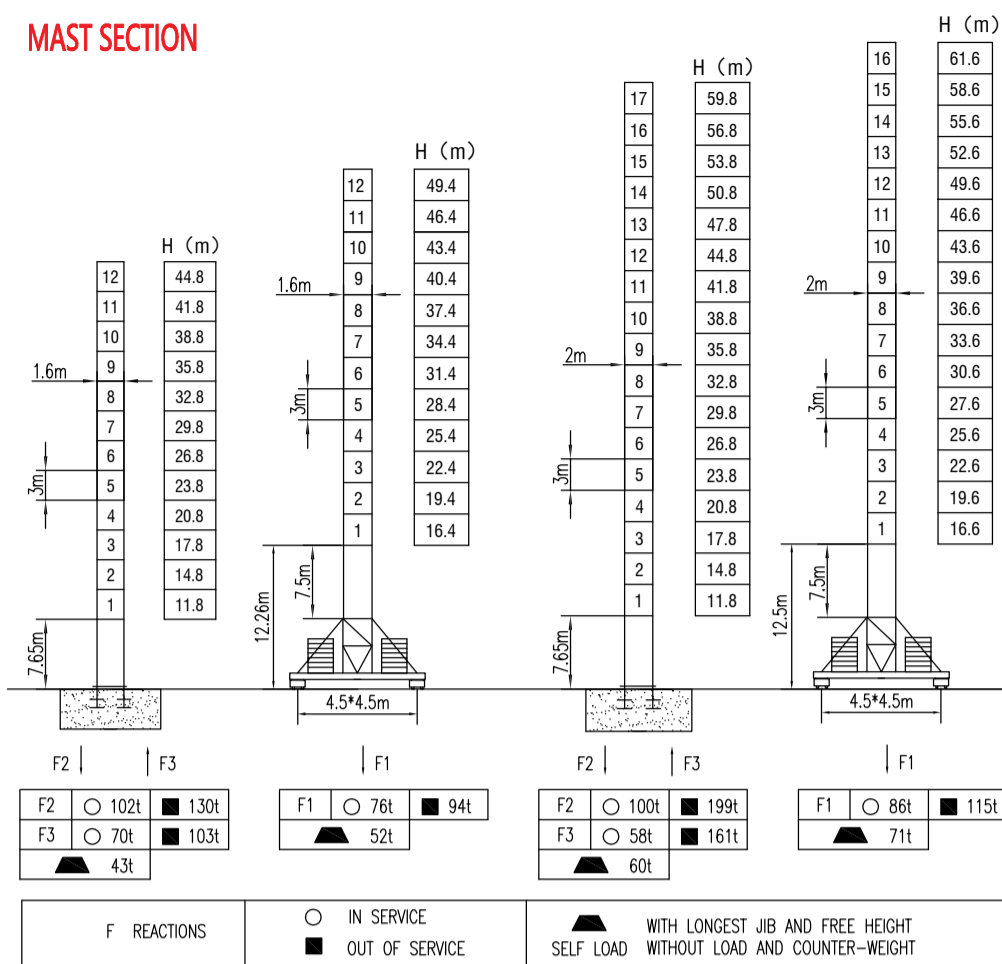
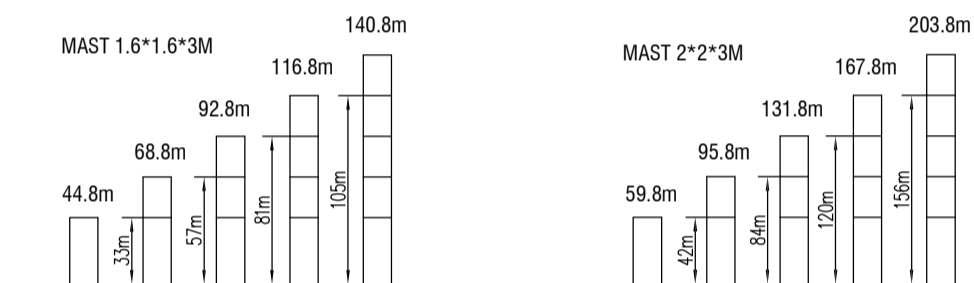


MAST SECTION



ANCHORAGES



LOAD DIAGRAMS

Radius	2.9	R(Cmax)m/t	20	25	30	35	40	45	50	55	60	m
60m	⬆	11.75 / 8.0	4.90	3.9	3.54	2.94	2.45	2.13	1.8	1.38	1.4	t
	⬇	26.0 / 4.0	4.0	3.53	2.95	2.46	2.14	1.9	1.69	1.5		t
55m	⬆	16.0 / 8.0	6.00	4.70	3.9	3.35	2.75	2.4	2.27	1.9		t
	⬇	32.0 / 4.0	4.0	3.45	2.85	2.5	2.28	2.0				t
50m	⬆	18.0 / 8.0	6.90	5.75	3.9	3.75	3.2	2.75	2.4			t
	⬇	33.5 / 4.0	4.00	3.85	3.3	2.85	2.5					t
45m	⬆	18.0 / 8.0	7.2	5.6	4.7	4.0	3.45	2.9				t
	⬇	37.0 / 4.0	4.0	3.55	3.0							t
40m	⬆	18.0 / 8.0	7.9	6.8	5.9	4.0	3.4					t
	⬇	37.0 / 4.0	4.0	3.5								t

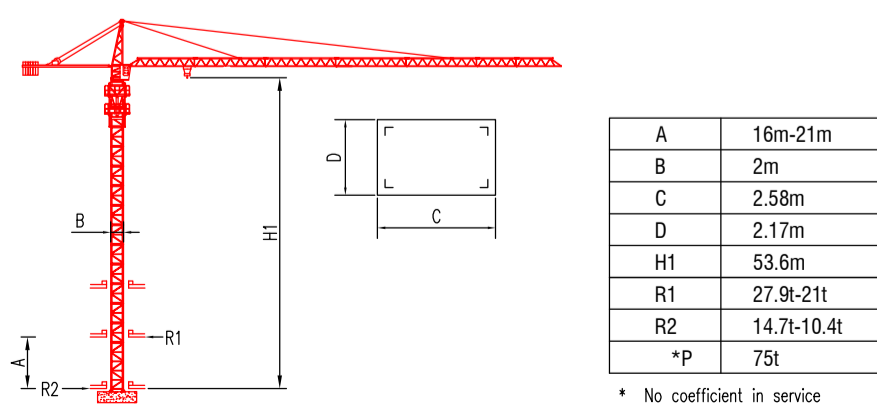
COUNTER-JIB BALLAST

Radius	Ballast Weight
60m	16.2t
55m	15.4t
50m	18.03
45m	17.42t
40m	16.2t

TECHNICAL PARAMETER

MECHANISMS		⬆		⬇		⬆		⬇		kw
Hoisting	37LVF	m/min	0-3.6	0-68	0-102	0-1.8	0-34	0-51	≥450	37
		t	4	2	1	8	4	2		
	QTJ80	m/min	34	68	17	34			≥450	30
		t	4	2	8	4				
Trolleying	4TVF	0-55 m/min								4
	QTB4.0	40/20 m/min								3.3/2.2
Slewing	5.5SVF	0-0.8 r/min								5.5x2
	RVC95	0-0.68 r/min								95Nm*2
Travelling	4TRVF	0-30 m/min								2x4
Power supply		380v.50Hz / 440v.60Hz								
Necessary electric power		70KVA / 50KVA								

INNER CLIMBING



* No coefficient in service
* The technical information can not be published without approval. The specifications are not subject to legal constraints due to continually products improved, the performance data will be modified without notice.