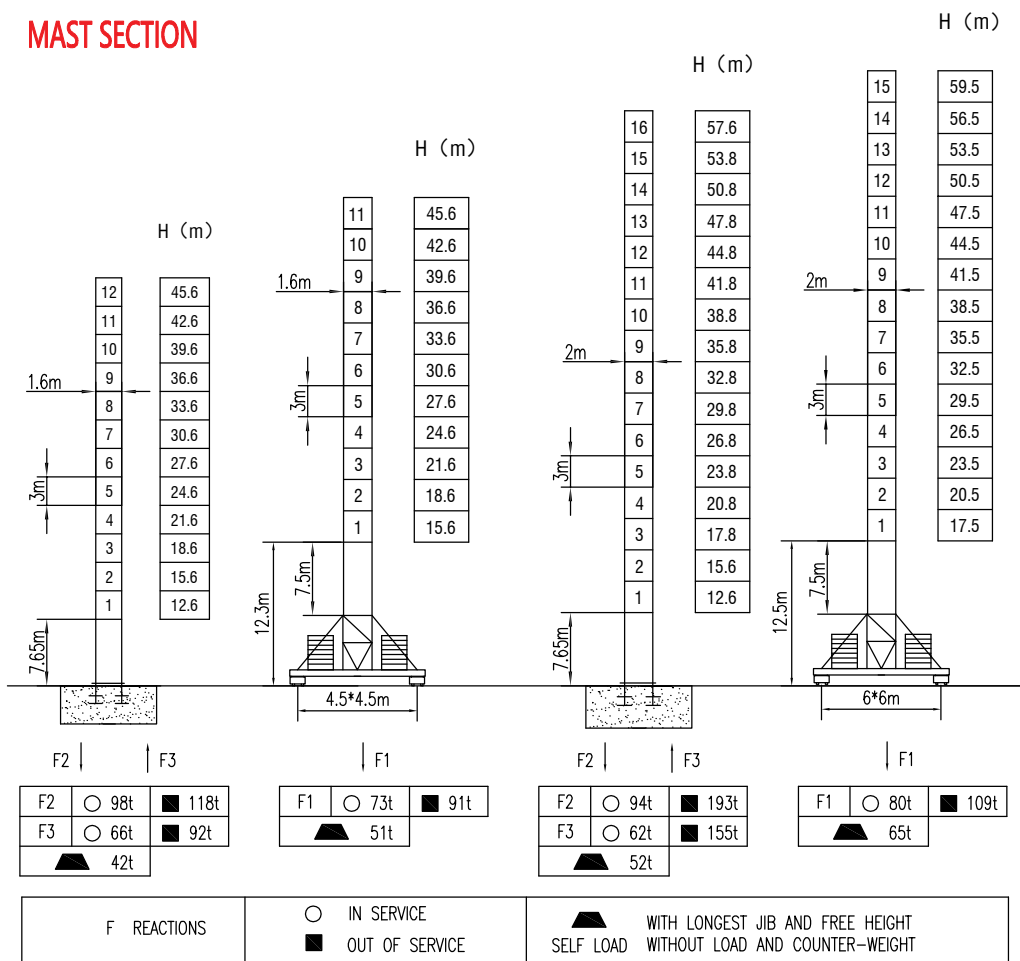
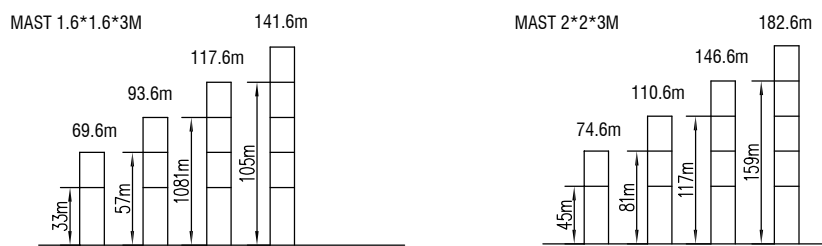


**MILISCORP**

MAST SECTION



ANCHORAGES



LOAD DIAGRAMS

Radius	2.6	R(Cmax)/m	15	20	25	30	35	40	45	50	55	60	m
60m	14.6 / 8.0	7.78	5.6	4.32	3.47	2.87	2.43	2.08	1.81	1.59	1.4	t	
		28.1 / 4.0	4.0	3.71	3.1	2.65	2.3	2.02	1.79	1.6	t		
55m	16.3 / 8.0	8.0	6.37	4.94	4.0	3.34	2.84	2.46	2.15	1.9	t		
		30.5 / 4.0	4.0	3.42	2.93	2.55	2.25	2.0	t				
50m	17.8 / 8.0	8.0	7.01	5.45	4.42	3.7	3.15	2.73	2.4	t			
		33.3 / 4.0	4.0	3.78	3.25	2.83	2.5	t					
45m	18.6 / 8.0	8.0	7.39	5.75	4.67	3.91	3.34	3.4	t				
		35.0 / 4.0	4.0	3.44	3.0	t							
40m	18.9 / 8.0	8.0	7.51	5.85	4.75	4.75	3.4	t					
		35.6 / 4.0	4.0	3.5	t								
35m	19.8 / 8.0	8.0	7.91	6.16	5.01	4.2	t						
		35.0 / 4.0	4.0	t									

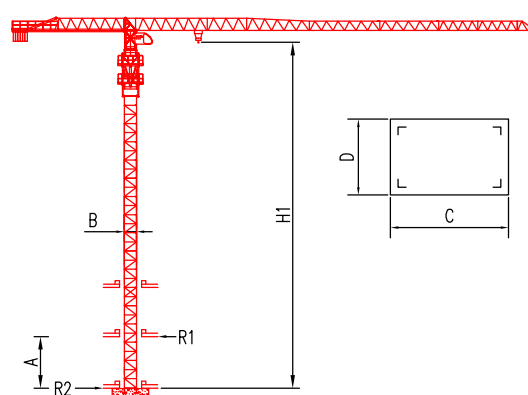
COUNTER-JIB BALLAST

Radius	Counter-jib Ballast
65m	15.8t
60m	15.2t
55m	14.8t
50m	14.2t
45m	13.8t
40m	11.6t
35m	10.6t

TECHNICAL PARAMETER

MECHANISMS		m/min		0-3.6		0-68		0-102		0-1.8		0-34		0-51		m		kw	
Hoisting	37LVF	m/min	0-3.6	0-68	0-102	0-1.8	0-34	0-51	≥450	37									
		t	4	2	1	8	4	2	≥400	24/24/5.4									
Hoisting	QTJ80	m/min	34	68	17	34	≥400	24/24/5.4											
		t	4	2	8	4	≥400	24/24/5.4											
Trolleying	4TVF	0-55 m/min										4							
	QTB4.0	40/20 m/min										3.3/2.2							
Slewing	5.5SVF	0-0.8 r/min										5.5x2							
	RCV95	0-0.68 r/min										95Nm <sup>2</sup>							
Travelling	4TRVF	0-30 m/min										2x4							
Power supply		380v.50Hz / 440v.60Hz																	
Necessary electric power		60KVA / 50KVA																	

INNER CLIMBING



Parameter	Value 1	Value 2
A	16m-21m	16m
B	2m	1.6m
C	2.58m	2.2m
D	2.17m	1.8m
H1	53.6m	39.5m
*R1	25.6t	13.9t
*R2	14.4t	8.2t
*P	72.7t	64.6t

\* No coefficient in service

\* The technical information can not be published without approval. The specifications are not subject to legal constraints due to continually products improved, the performance data will be modified without notice.