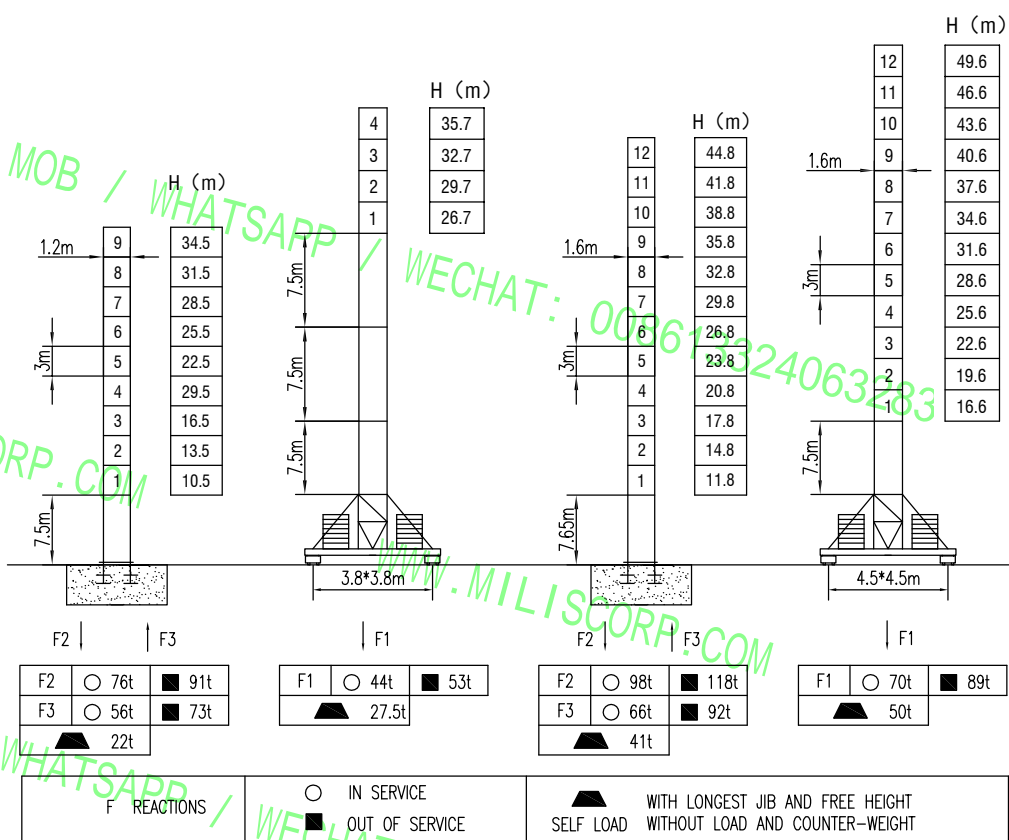


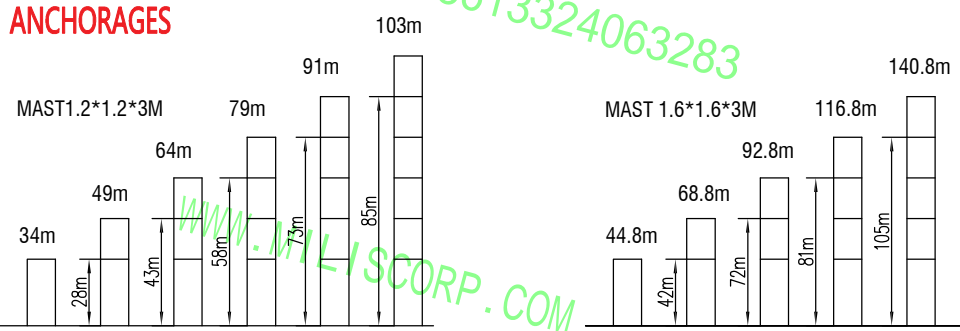
MAST SECTION



MILISCORP@MILISCORP.COM

MILISCORP

ANCHORAGES



LOAD DIAGRAMS

Radius	3.1	15	17	20	22	25	28	30	32	35	40	45	50	m
50m	5.00	4.30	3.60	3.20	2.70	2.50	2.40	2.20	2.00	1.70	1.50	1.30		t
45m	5.00	4.60	3.80	3.40	2.90	2.50	2.40	2.20	2.00	1.85	1.60			t
40m	5.00	4.80	3.90	3.50	3.00	2.50	2.45	2.20	2.00	1.90				t
35m	5.00	4.80	3.90	3.50	3.00	2.75	2.50	2.45	2.20					t
30m	5.00	4.80	3.90	3.50	3.00	2.75	2.40							t

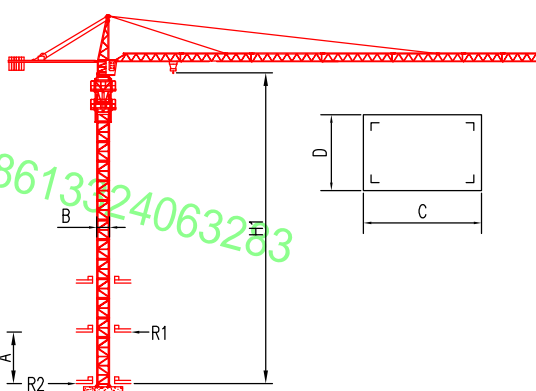
COUNTER-JIB BALLAST

Radius	Weight
50m	12.7t
45m	12.7t
40m	10.85t
35m	9.75t
30m	9.05t

TECHNICAL PARAMETER

MECHANISMS										
Hoisting	22LVF	m/min	0-32	0-52	0-72	0-16	0-26	0-36	≥400	22
	QTJ63	t	3	3	1.5	6	6	3	≥300	24/24/5.4
Trolleying	3TVF		0-45 m/min							3
	QTB4.0		40/20 m/min							3.3/2.2
Slewing	5.5SVF		0-0.8 r/min							5.5x2
	QTH80		0-0.6 r/min							3.7x2
Travelling	4TRVF		0-30 m/min							2x4
Power supply			380v.50Hz / 440v.60Hz							
Necessary electric power			60KVA / 32KVA							

INNER CLIMBING



Parameter	7m-11m	7m-11m
A	7m-11m	7m-11m
B	1.2m	1.5m
C	1.5m	2.1m
D	1.4m	1.7m
H1	30.7m	30.7m
R1		
R2		
P		

\* No coefficient in service

\* The technical information can not be published without approval. The specifications are not subject to legal constraints due to continually products improved, the performance data will be modified without notice.