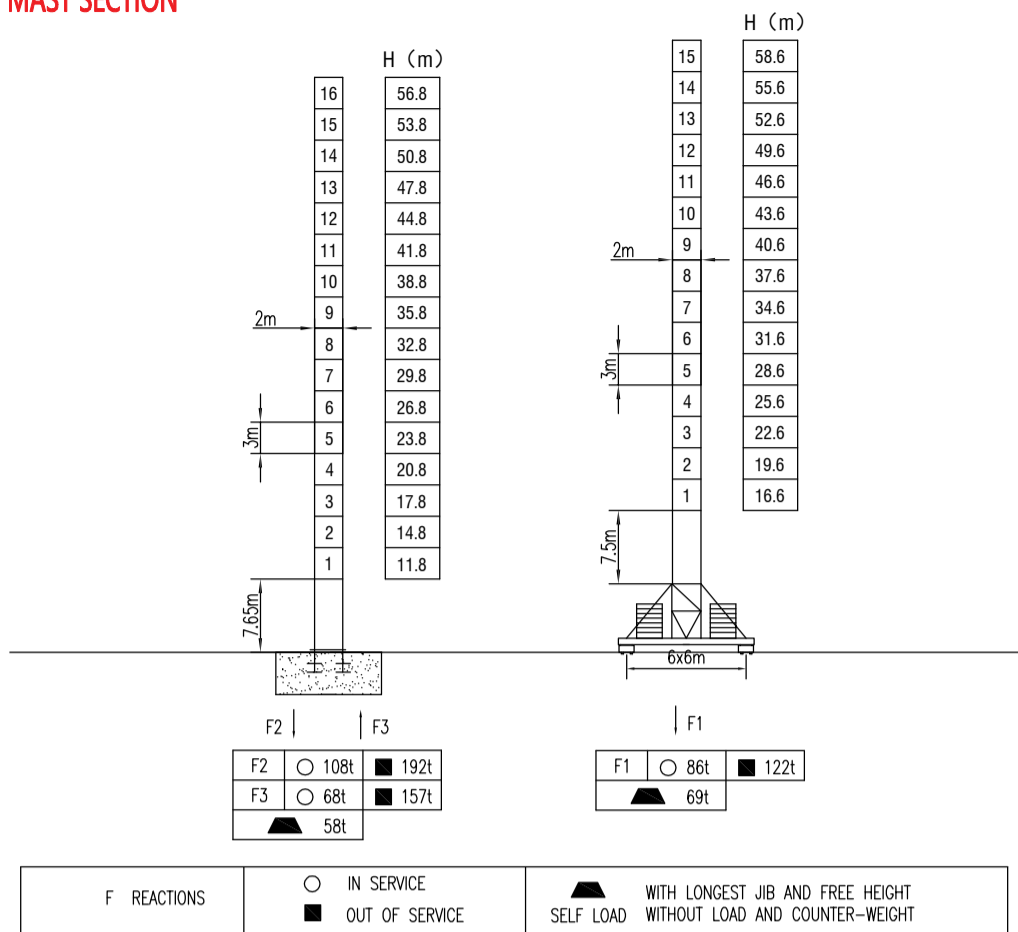
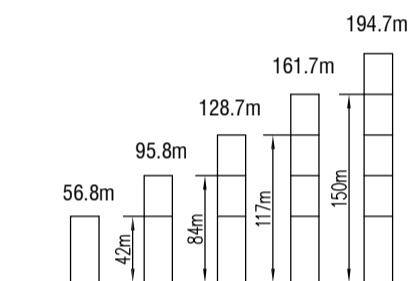


MAST SECTION



ANCHORAGES



LOAD DIAGRAMS

Radius	3.0	R(Cmax)m/t	15	20	25	30	35	40	45	50	55	60	65	70	m
70m	⚙️	19 / 8.0	8.00	7.60	6.20	5.10	3.90	3.30	2.60	2.30	2.20	1.80	1.50	1.30	t
		35 / 4.0	4.00 3.40 2.80 2.50 2.40 2.00 1.70 1.50											t	
65m	⚙️	21 / 8.0	8.00	6.70	5.30	4.30	3.30	3.00	2.70	2.50	2.10	1.80			t
		35 / 4.0	4.00 3.70 3.20 2.90 2.70 2.30 2.00											t	
60m	⚙️	22 / 8.0	8.00	7.00	5.50	4.40	3.70	3.10	2.90	2.70	2.40			t	
		40 / 4.0	4.00 3.30 3.10 2.90 2.60											t	
55m	⚙️	22 / 8.0	8.00	7.00	5.50	4.50	3.80	3.20	3.00	2.70			t		
		40 / 4.0	4.00 3.40 3.20 2.90											t	

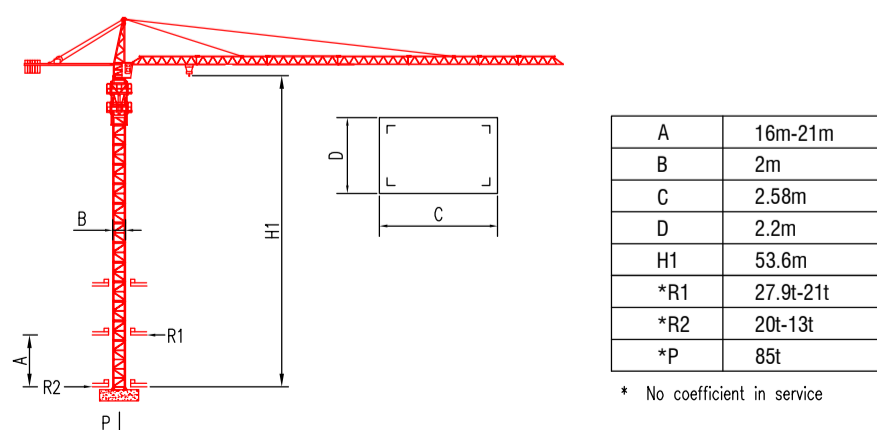
COUNTER-JIB BALLAST

Radius	Counter-jib Ballast
70m	25t
65m	25t
60m	21t
55m	21t

TECHNICAL PARAMETER

MECHANISMS		⚙️		⚙️		⚙️		⚙️		kw	
Hoisting	⬆️	37LVF	m/min	0-3.6	0-68	0-102	0-1.8	0-34	0-51	≥450	37
		t		4	2	1	8	4	2		
Hoisting	⬆️	QTJ80	m/min	34		68	17	34		≥450	30
		t	4		2	8	4				
Trolleying	⬅️	4TVF	0-55 m/min								4
		QTB4.0	40/20 m/min								3.3/2.2
Slewing	🌀	5.5SVF	0-0.8 r/min								5.5x2
		RCV95	0-0.68 r/min								95Nm*2
Travelling	⬅️	4TRVF	0-30 m/min								2x4
Power supply		380v.50Hz / 440v.60Hz									
Necessary electric power		70KVA / 50KVA									

INNER CLIMBING



\* The technical information can not be published without approval. The specifications are not subject to legal constraints due to continually products improved, the performance data will be modified without notice.