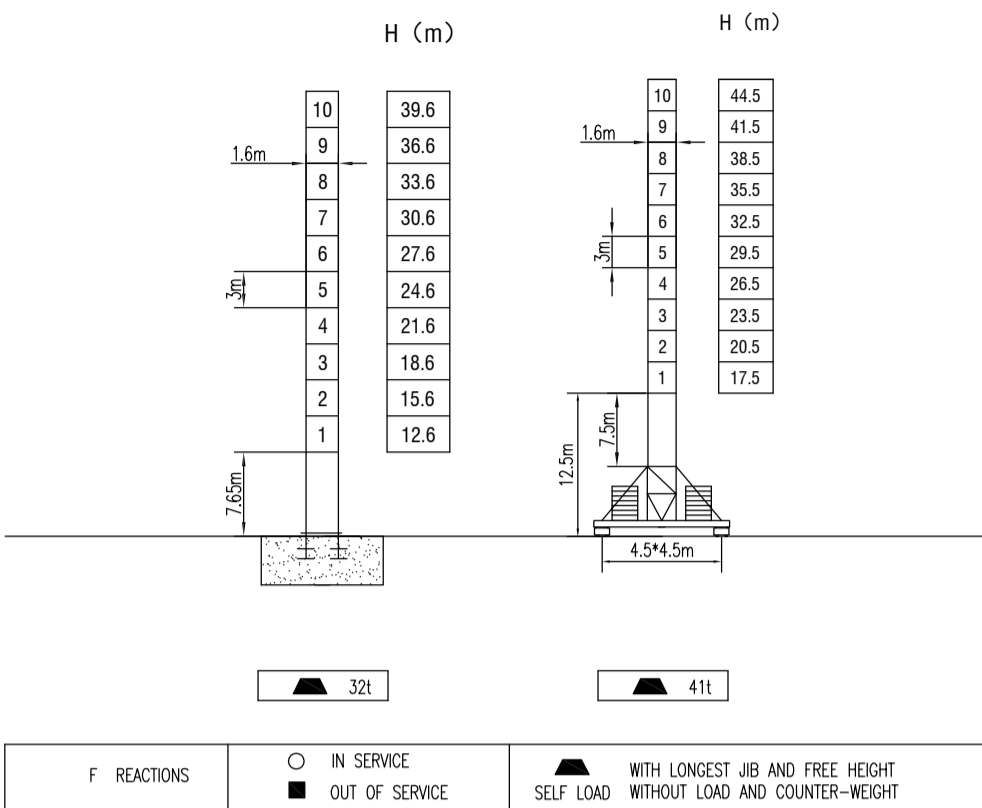
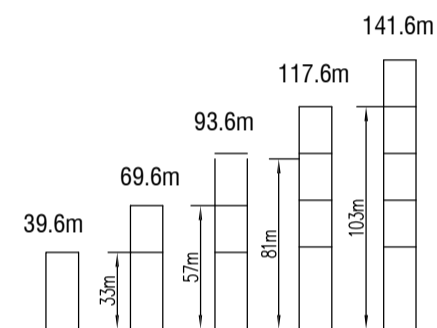


MAST SECTION



ANCHORAGES



LOAD DIAGRAMS

Radius	R(Cmax)/m/t	18	23	25	30	35	40	45	50	m
50m	13.5 / 6.0	4.18	3.11	2.81	2.24	1.83	1.52	1.29	1.1	t
	23.0 / 3.0		3.0	2.88	2.24	1.83	1.62	1.38	1.2	t
45m	15.2 / 6.0	4.98	3.74	3.38	2.71	2.23	1.88	1.6		t
	25.0 / 3.0		3.0	2.79	2.32	1.97	1.7			t
40m	16.0 / 6.0	5.49	4.13	3.75	3.01	2.49	2.1			t
	30.0 / 3.0		3.0	2.58	2.2					t
35m	16.0 / 6.0	5.71	4.3	3.9	3.14	2.6				t
	30.0 / 3.0		3.0	2.7						t
30m	16.5 / 6.0	5.65	4.25	3.85	3.1					t
	30.0 / 3.0		3.0							t

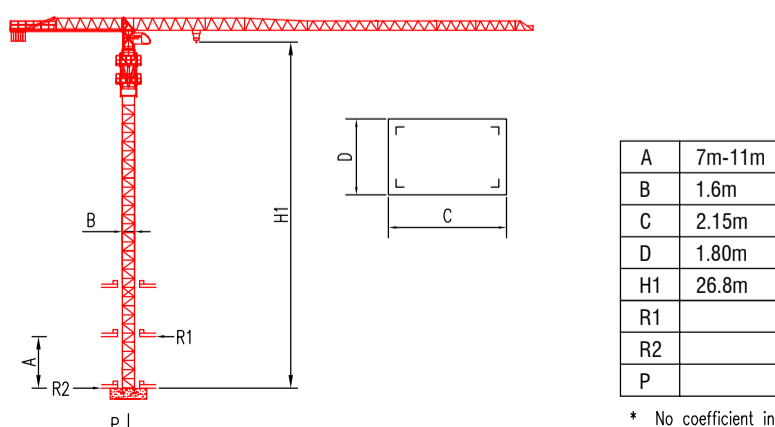
COUNTER-JIB BALLAST

Radius	Ballast
50m	12t
45m	10.6t
40m	10.6t
35m	10.6t
30m	9.2t

TECHNICAL PARAMETER

MECHANISMS		50m			45m			30m		kw	
Hoisting	24PQC15	m/min	5	25	50	2.5	12.5	25	>340	24	
		t	3	3	1.5	6	6	3			
	QTJ63	m/min	40	80	20	40	>400	24			
		t	3	1.5	6	3					
Trolleying	QT4.0	40 / 20							3.3 / 2.2		
Slewing	RCV95	0-0.8							95NMx2		
Travelling	4TRVF	0-30							2*4		
Power supply		380v.50Hz / 440v.60Hz									
Necessary electric power		43KVA									

INNER CLIMBING



* No coefficient in service

* The technical information can not be published without approval. The specifications are not subject to legal constraints due to continually products improved, the performance data will be modified without notice.