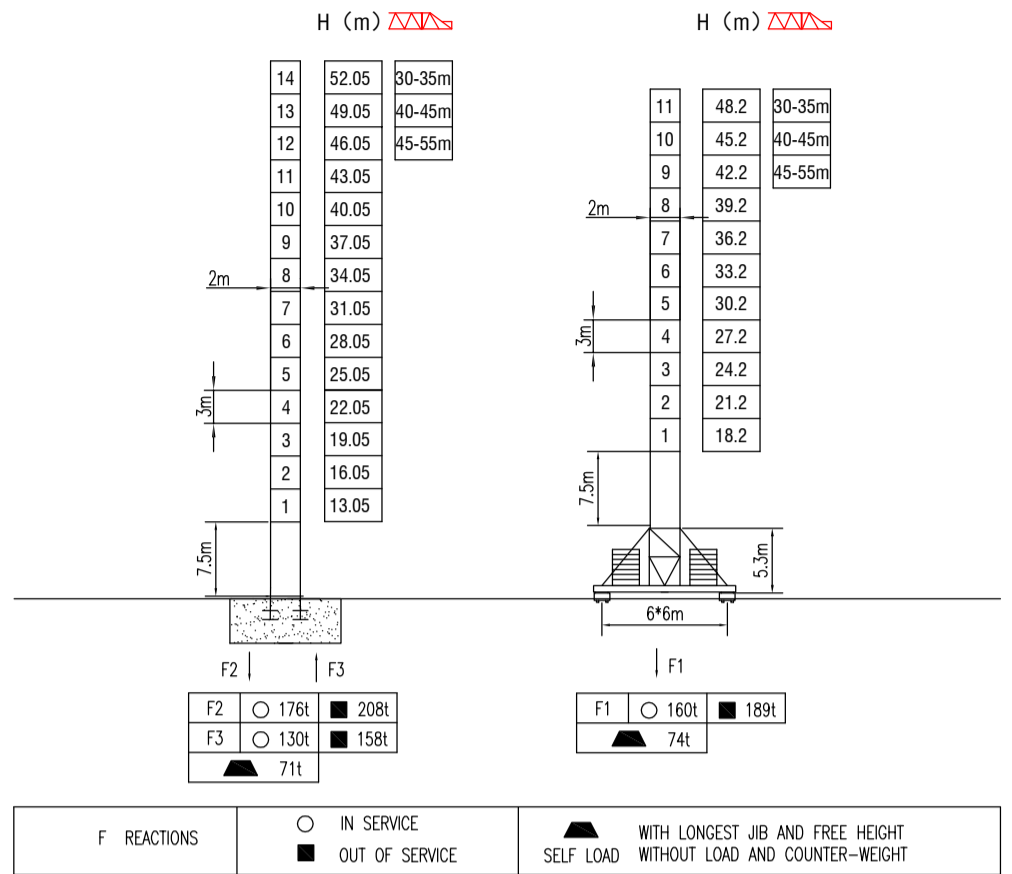
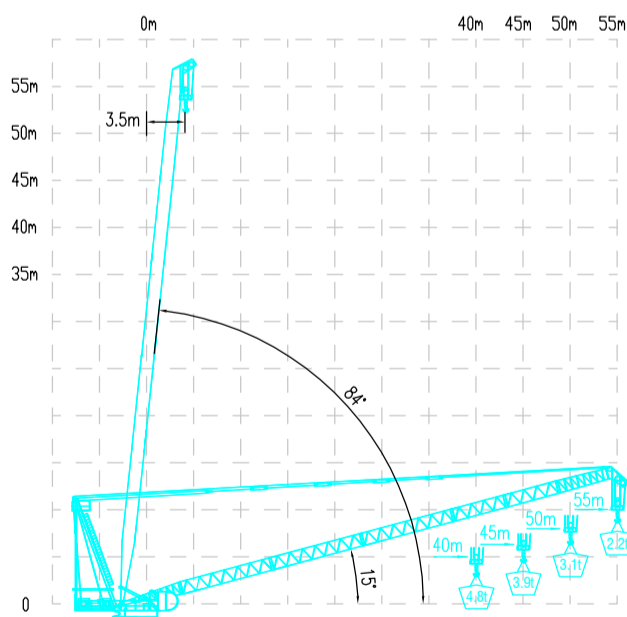


**MILISCORP**

MAST SECTION



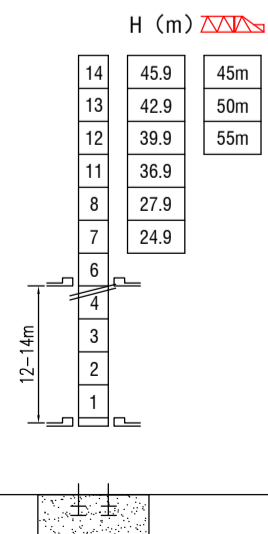
LOAD DIAGRAMS



TECHNICAL PARAMETER

| MECHANISMS               |    | ⚙️                    |       |       | ⚙️   |      |      | ⚙️   | kw   |         |      |
|--------------------------|----|-----------------------|-------|-------|------|------|------|------|------|---------|------|
| Hoisting                 | ⬆️ | 55LFT30               | m/min | 0-41  | 0-55 | 0-82 | 0-25 | 0-50 | 0-75 | 520     | 55   |
|                          |    |                       | t     | 6     | 4.5  | 3    | 12   | 9    | 6    |         |      |
| Hoisting                 | ⬆️ | 70RCS30               | m/min | 0-40  |      | 0-80 | 0-20 |      | 0-40 | 530     | 51.5 |
|                          |    |                       | t     | 6     |      | 3    | 12   |      | 6    |         |      |
| Luffing                  | 📐  | 55DFT30               | min   | 2.5   |      |      |      |      |      | 55      |      |
| Slewing                  | 🌀  | 9SVF                  | r/min | 0-0.8 |      |      |      |      |      | 9*2     |      |
|                          |    | 145RCV12              | r/min | 0-0.8 |      |      |      |      |      | 145Nm*2 |      |
| Travelling               | 🚶  | 4TVF                  | m/min | 0-30  |      |      |      |      |      | 3.4*4   |      |
|                          |    | RT443                 | m/min | 22/11 |      |      |      |      |      | 3.4*4   |      |
| Power supply             |    | 380v.50Hz / 440v.60Hz |       |       |      |      |      |      |      |         |      |
| Necessary electric power |    | 170KVA                |       |       |      |      |      |      |      |         |      |

INNER CLIMBING



\* The technical information can not be published without approval. The specifications are not subject to legal constraints due to continually products improved, the performance data will be modified without notice.