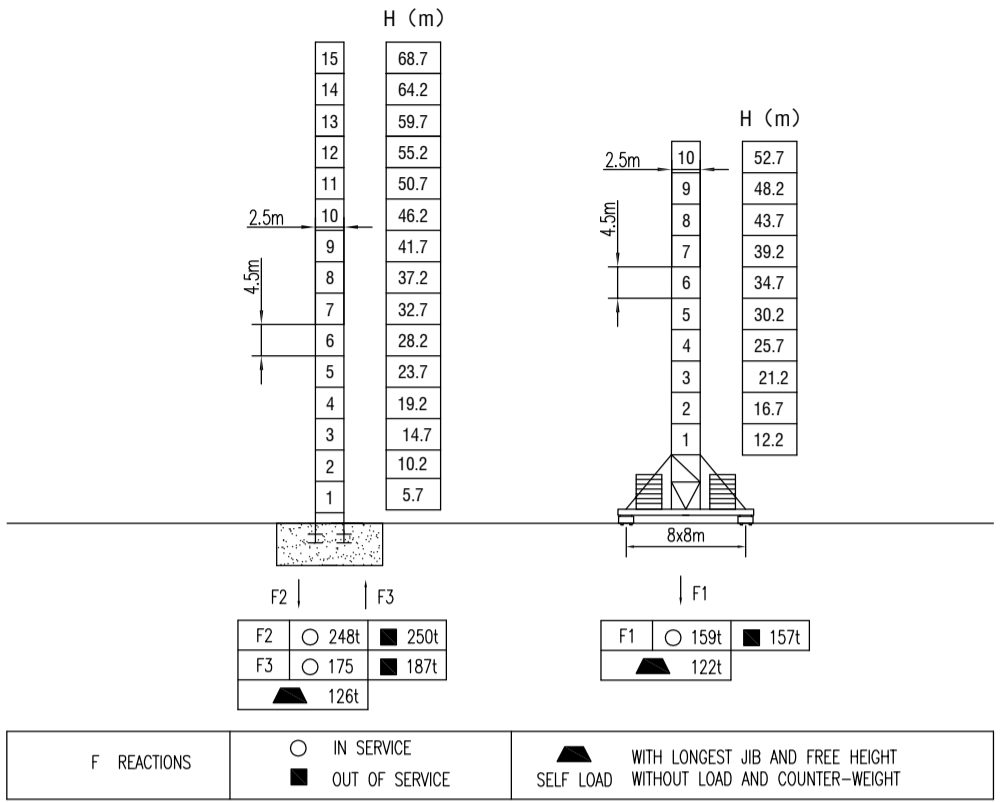
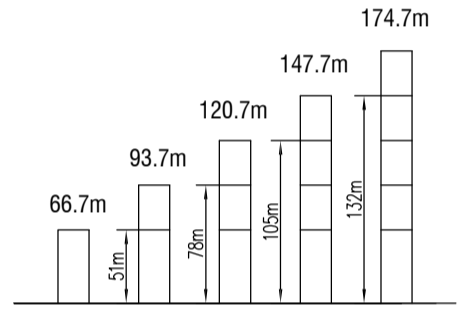


MAST SECTION



ANCHORAGES



LOAD DIAGRAMS

Radius	3.8	R(Cmax)m/t	19.55	25	30	35.55	40	45	50	55	60	65	70	75	80	m	
80m		19.55/20.0	20.0	12.7	10.88	9.0	7.7	6.7	5.8	5.15	4.55	4.05	3.7	3.3	3.0	t	
		35.55/10.0	10.0 8.7 7.7 6.8 6.15 5.55 5.05 4.7 4.3 4.0														
70m		22.5	25	30	35	43.86	45	50	55	60	65	70	m				
		22.5/20.0	20.0	16.54	13.95	11.53	9.0	8.73	7.83	7.18	6.28	5.68	5.15	t			
		43.86/10.0	10 9.73 8.83 8.18 7.28 6.68 6.15														t
60m		23.5	25	30	35	40	45	50	52.8	60	m						
		23.5/20.0	20.0	19.4	15.6	14.1	11.7	10.7	9.5	9.0	7.8	t					
		52.8/10.0	10.0 8.8														t
50m		25.5	30	35	40	45	50	m									
		25.5/20.0	20.0	15.6	13.3	11.7	10.7	9.0	t								
		50.0/10.0	10.0														t

TECHNICAL PARAMETER

MECHANISMS						kw
Hoisting	90LFT50	m/min 0-45	0-96	0-22	0-45	90
		t 10	5	20	10	650
Trolleying	11DFT10	0-65 m/min				11
Slewing	145RCV12	0-0.7 r/min				145NMx3
Power supply	380v.50Hz / 440v.60Hz					
Necessary electric power	155KVA					

* The technical information can not be published without approval. The specifications are not subject to legal constraints due to continually products improved, the performance data will be modified without notice.