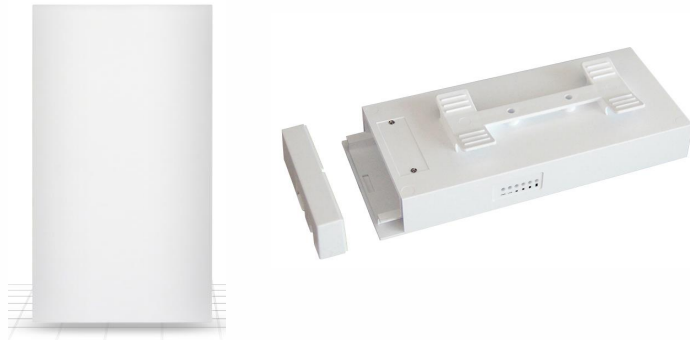
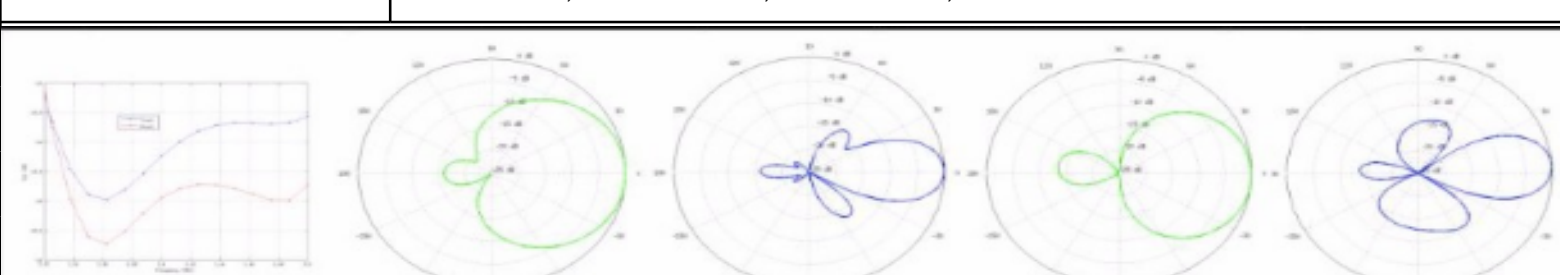


300Mbps 5.8GHz Outdoor high power wireless bridge



- *PTMP Range: 8-10Km
- *Frequency band & Channels: 5.150-5.850 GHz (FCC 5.745-5.825 Ghz)
- *Transmit power: Up to 29 dBm
- *Antenna Gain: 29dBi(patch pannel antenna)
- *Angle of antenna: H30°, V60°
- *Support WALN
- *Standards: IEEE802.11a/n, Private Protocol

| | |
|--|---|
| Model Number | WDM-CPE5804 |
| Wireless Specifications | |
| WLAN standard | IEEE802.11a/n , MIMO 2X2 , 300Mbps |
| Wireless operating modes | Access point (auto WDS), Station, Station WDS, iPoll Access Point, iPoll Station |
| Network operating modes | AP/Ipoll 2 /Ipoll 3 /Client Bridge |
| Networking Interface | 1*10/100 BASE-TX(Cat.5, RJ-45) Ethernet Interface |
| Radio mode | MIMO 2x2 |
| Frequency band | 5.8 GHz(5.150-5.850 GHz, FCC 5.745-5.825 Ghz) |
| Transmit power | Up to 29 dBm (country dependent) |
| Transmission Rate | 300Mbps theoretical bandwidth |
| Channel size | 5G spread spectrum, frequency support up to 6000MHZ |
| Modulation schemes | DBPSK, DQPSK, CCK, OFDM, 16-QAM, 64-QAM |
| Receptive sensitivity | 802.11a: -95dBm@6Mbps, -78dBm@54Mbps 802.11n: HT20: -87dBm@MCS0, -69dBm@MCS7 HT40: -87dBm@MCS0, -67dBm@MCS7 |
| Maximum transmit power | 20.0dBm (Single channel, ±1.5dB) @11n 21.0dBm (Single channel, ±1.5dB) @11a |
| EVM | -28.5dBm@6Mbps-31.0dBm@54Mbps |
| With PA | Yes |
| Security | WPA2/WPA/AES/TKIP |
| Services | DHCP server, SNMP server, NTP client, Remote syslog, Private protocol, Ping watchdog |
| Tools | Site survey, Link test, Antenna alignment, Ping, Traceroute, Spectrum analyzer |
| DHCP | Client, Server, Relay |
| Port forwarding | Supported |
| Certificate | FCC/CE/Safety/ RoHS |
| Wired | |
| Interface | 1pc 10/100 Internet port, 1pc reset port, 1pc sata, RJ45 |
| LED | 1pc power point light, 1pc LAN light, 4 signal strength indicators |
| Electrical | |
| Power supply | POE 24V |
| Power method | passive Power over Ethernet(pairs 4,5+; 7,8 return) |
| Max Power consumption | 8 Watts |
| Management | |
| System monitoring | SNMP, Syslog, Web UI, WNMS |
| Configuration | WebUI, WNMS |
| System | |
| Processor Specs | Atheros AR9342 Networking Processor |
| Memory Information | DDR2 64M |
| SPI Flash | 16M |
| Install way | Pole |
| Waterproof | IP45 |
| Mean time between failures(MTBF) | 20000Hours |
| Environmental | |
| Operating temperature | -40°C~55°C/-45°C~85°C |
| Operating Humidity | 5 ~ 95 % (non-condensing) |
| Antenna 2*2 MIMO Antenna | |
| Type | Integrated directional dual polarization antenna |
| Frequency range | 5.8GHz |
| Antenna Gain | 29dBi(patch pannel antenna) |
| Polarization | Dual linear |
| Antenna H-pol BeamWidth | 30° |
| Antenna V-pol BeamWidth | 60° |
| Antenna Technical Specifications | |
| VSWR | H-Pol Azimuth, H-Pol Elevation, V-Pol Azimuth, V-Pol Elevation |
|  | |
| <p style="text-align: center;"> VSWR H-Pol Azimuth H-Pol Elevation V-Pol Azimuth V-Pol Elevation </p> | |