



No.743-CI-32015

Hydraulic Universal Testing Machine Catalog

Customer: _____

Manufacture: Jinan Chenda Testing Machine Manufacturing Co.,Ltd

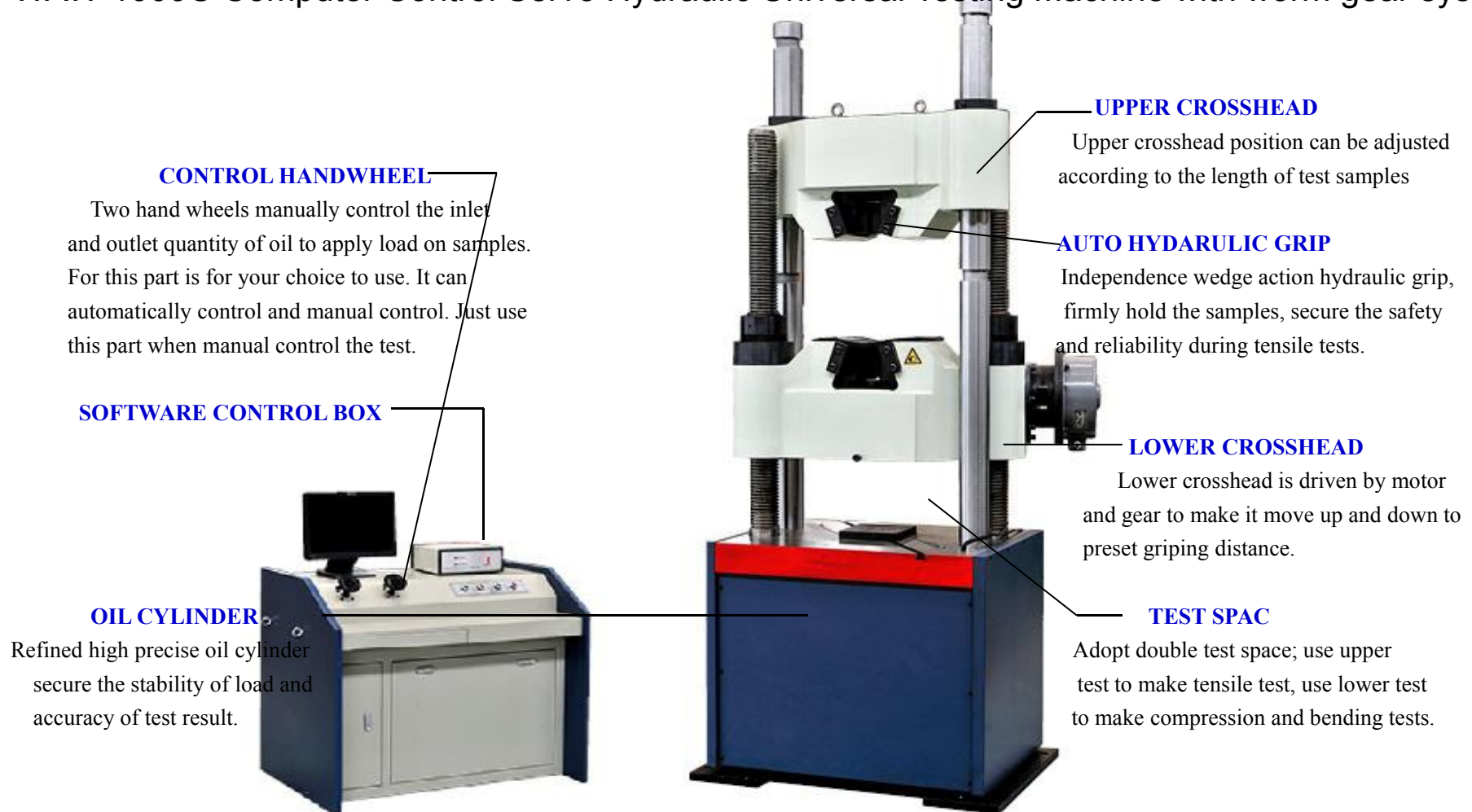
Machine Model: WAW-1000C

Machine Name: Computer Control Servo Hydraulic
Universal Testing Machine





WAW-1000C Computer Control Servo Hydraulic Universal Testing Machine with worm gear system



CONTROL HANDWHEEL

Two hand wheels manually control the inlet and outlet quantity of oil to apply load on samples. For this part is for your choice to use. It can automatically control and manual control. Just use this part when manual control the test.

SOFTWARE CONTROL BOX

OIL CYLINDER

Refined high precise oil cylinder secure the stability of load and accuracy of test result.

UPPER CROSSHEAD

Upper crosshead position can be adjusted according to the length of test samples

AUTO HYDARULIC GRIP

Independence wedge action hydraulic grip, firmly hold the samples, secure the safety and reliability during tensile tests.

LOWER CROSSHEAD

Lower crosshead is driven by motor and gear to make it move up and down to preset gripping distance.

TEST SPAC

Adopt double test space; use upper test to make tensile test, use lower test to make compression and bending tests.



WAW-1000C Computer Control Servo hydraulic universal testing machine with worm gear drive system

Product application:

WAW-1000C Computer control servo hydraulic universal testing machine adopts under fuel tank host structure. Mainly used for metal and nonmetal material product tensile, compression and bending mechanical test.

If this series testing machine equipped with environment device also can do test with this environment. For example: high temperature tensile testing machine, low temperature tensile and compression testing machine.

It is widely used for the industry of iron, steel, metallurgy and building materials also inspection center, roads and bridges, research institutes, universities and other department.

Main technical specifications:

1> Host:

The host adopts under fuel tank host structure. The tensile space is on the upper of the host. The compression and bending test space is between the lower crosshead and test table. Testing machine photo as follows:



2> Transmission system:

Using the oil pressure transduce to measure the force indirectly. The worm gear transmission device system to adjust the test space. It do not need the screw rotating when you adjust the test space. This made the transmission system and the positioning system separated completely. To ensure the concentricity and durability of the upper and lower jaws.

3> Hydraulic system:



Details technical specification:

No.	Technical	Specification
1	Max test force kN	1000
2	relative error of test force	$\leq \pm 1\%$
3	Measurement range of test force	2%~100%
4	stress control range(N/mm ² ·S ⁻¹)	2~60
5	strain control range	0.00025/s~0.0025/s
6	displacement control range (mm/min)	0.5~50
7	Clamping ways	Hydraulic clamping
8	Round specimen fixture mm	$\Phi 15 \sim \Phi 55$
9	Flat specimen fixture mm	2-40
10	The width of flat specimen mm	110
11	Max. Tensile test space mm	850
12	Max. Compression test space mm	650
13	Control cabinet packing Dimensions mm	1280*850*1500
14	Host packing Dimension mm	1200*900*2700
15	Motor Power kW	2.5
16	Gross weight kg	3800
17	Column clearance (mm)	620
18	Upper and lower platens size mm	200*200
19	Maximum piston stroke mm	200



20	Piston movement speed mm/min	80
----	------------------------------	----

Annex-1

Software function:

Easy to control and friendly interface

Windows based interface, easy and fast to reach different functions, suitable for most of operators using habits.

Full digital display and computer control

Adopt special testing machine Controller, fast response and reliable to parameter gathering. Realize the digital adjustment and zeroing of LOAD, DEFORM and DISPLACEMENT as well as PID parameter adjusting.

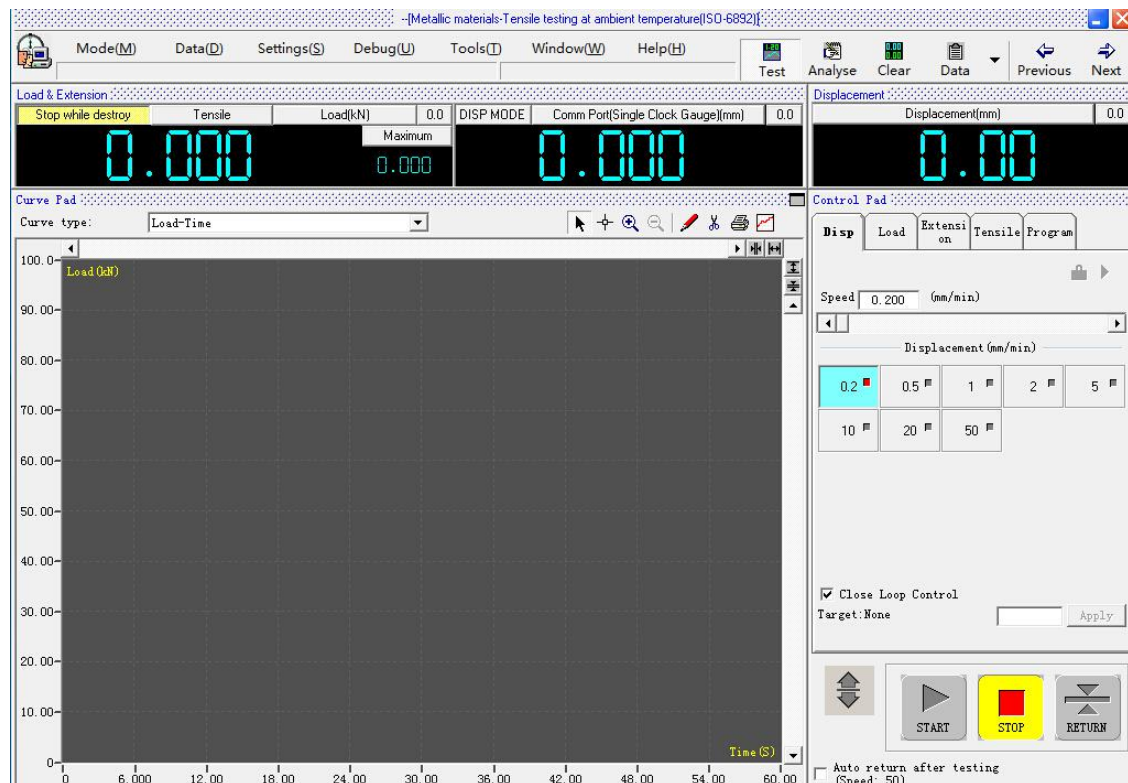
Manual or program control of test process

The software provides multi functional control mode: Load (stress) control; Displacement (Stroke) control, Strain (Deformation) control, Load keeping, Displacement keeping, Customized programming control ect.

In stroke control mode, operator can define customized test speed to conform to different test standard. Preset limit position and return position will secure the safety and return the crosshead automatically after test finished. In program control mode, the testing machine is controlled by conditional programs, operator can input each condition to regulate test process, and software can realize constant parameter control through this function.

Test curves

Load-Time ;Extension-Time;Load-Displacement;Load-Extension;Stress-Strain;Etc





Our Company

济南长达试验机制造有限公司

值得您信赖的试验机制造服务商

辰达六大产品生产线 | Six Product Lines of CHENDA



- 04 -



- 05 -

developing testing machines in China as well as the largest testing machines producing base at home.

We are specialized in providing:

1. Hydraulic universal testing machines
2. Electronic universal testing machines
3. Friction and wear testing machines
4. Complete impact testing equipment and bending testing machines

Our Services

1. Pre-service

24 Hours online service for your consult.

Help choose right model, and a series of service, person, advise.

2. Middle service

--Give you best offer

--Provide discount for many sets order

--Do customer's request:

--Choose payment term you convenient.

--Promptly production and delivery, inform you in time.

--Can provide invoice value as you like to decrease your tax.

Website: www.shiyanjishop.com.cn www.jncd.en.alibaba.com Contact person: Nancy Wu
Email: nancychenda@163.com Tel: +86-531-87528388 Mobile: 86-18765888676 Skype: Nancy-CDT



3. After sale service

- 2 year warranty service and all life maintenance.
- Technical Engineer are available for oversea training.
- Free change for some parts
- Remote control technical consult
- Free installation DVD
- Maintenance plan

4,Commitment:

We will sign a letter of commitment while we sign the contract, which will improve your confidence to us.

Nancy: International Trade



Education:bachelor's degree

**International economics and trade major ,
has exported testing machine to all over
the world for many years.**

**Very Familiar with hydraulic UTM, Electronic UTM,
Compression Tester,Impact Tester,Torsion Tester
and so on .Have rich experience for selecting
Testing machine.**

Email:nancychenda@yahoo.com

Skype:Nancy-CDT

Mobile/Whatsapp:86-18765888676