

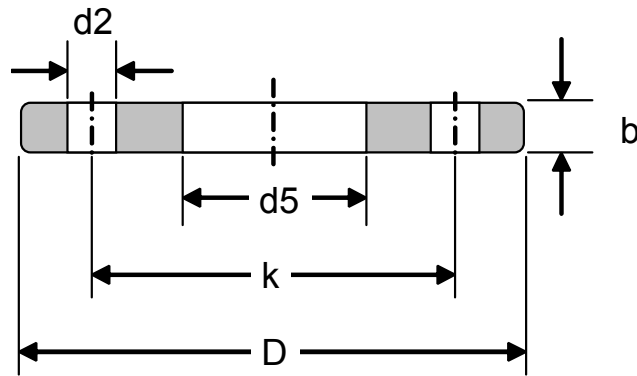


HAOYUAN
STEEL PIPE

皓圆管件

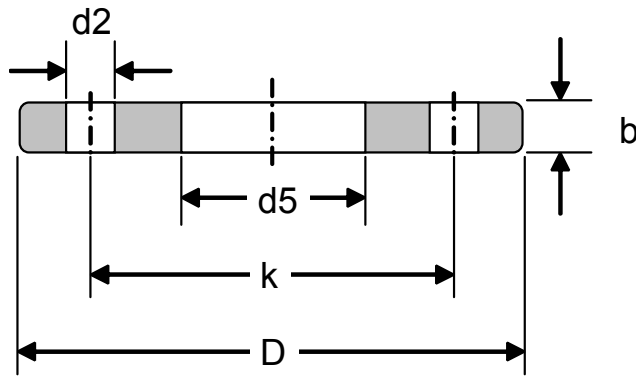
HAOYUAN PIPEFITTING

DIN FLANGE

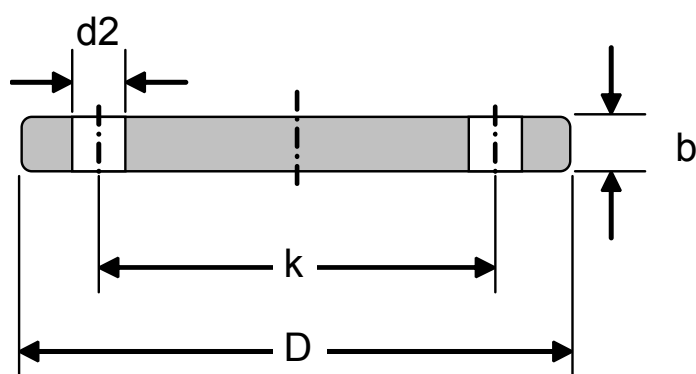


PN16

DN	d1		d5	D	b	k	No. of Holes	d2	KG
	ISO	DIN							
10	---	14.00	14.50	90	14	60	4	14	0.61
	17.20	---	17.70	90	14	60	4	14	0.60
15	---	20.00	21.00	95	14	65	4	14	0.67
	21.30	---	22.00	95	14	65	4	14	0.67
20	---	25.00	26.00	105	16	75	4	14	0.94
	26.90	---	27.60	105	16	75	4	14	0.94
25	---	30.00	31.00	115	16	85	4	14	1.13
	33.70	---	34.40	115	16	85	4	14	1.11
32	---	38.00	39.00	140	16	100	4	18	1.66
	42.40	---	43.10	140	16	100	4	18	1.62
40	---	44.50	45.50	150	16	110	4	18	1.89
	48.30	---	49.00	150	16	110	4	18	1.85
50	---	57.00	58.10	165	18	125	4	18	2.50
	60.30	---	61.10	165	18	125	4	18	2.46
65	76.10	---	77.10	185	18	145	4	18	2.99
80	88.90	---	90.30	200	20	160	8	18	3.61
100	---	108.00	109.60	220	20	180	8	18	4.17
	114.30	---	115.90	220	20	180	8	18	3.99
125	---	133.00	134.80	250	22	210	8	18	5.66
	139.70	---	141.60	250	22	210	8	18	5.41
150	---	159.00	161.10	285	22	240	8	22	6.97
	168.30	---	170.50	285	22	240	8	22	6.55
175	193.70	---	196.10	315	24	270	8	22	8.42
200	219.10	---	221.80	340	24	295	12	22	8.97
250	---	267.00	270.20	405	26	355	12	26	13.29
	273.00	---	276.20	405	26	355	12	26	12.76
300	323.90	---	327.60	460	28	410	12	26	16.60
350	355.60	---	359.70	520	30	470	16	26	24.08
	---	368.00	372.20	520	30	470	16	26	22.39
400	406.40	---	411.00	580	32	525	16	30	30.20
	---	419.00	423.70	580	32	525	16	30	28.11
450	457.00	---	462.30	640	38	585	20	30	41.67
500	508.00	---	513.60	715	38	650	20	33	52.87
600	610.00	---	616.50	840	42	770	20	36	77.58
700	711.00	---	716.00	910	44	840	24	36	77.13
800	813.00	---	818.00	1025	50	950	24	39	106.35
900	914.00	---	920.00	1125	54	1050	28	39	125.39
1000	1016.00	---	1022.00	1255	60	1170	28	42	177.99



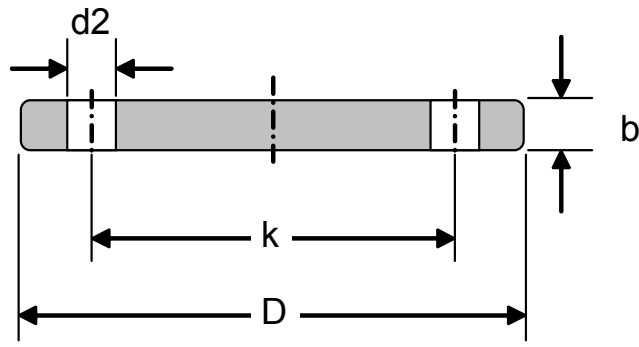
DN	d1		d5	No. of Holes	PN 25					PN 40				
	ISO	DIN			D	b	k	d2	KG	D	b	k	d2	KG
10	---	14.00	14.50	4	90	16	60	14	0.70	90	16	60	14	0.70
	17.20	---	17.70	4	90	16	60	14	0.69	90	16	60	14	0.69
15	---	20.00	21.00	4	95	16	65	14	0.77	95	16	65	14	0.77
	21.30	---	22.00	4	95	16	65	14	0.77	95	16	65	14	0.77
20	---	25.00	26.00	4	105	18	75	14	1.06	105	18	75	14	1.06
	26.90	---	27.60	4	105	18	75	14	1.05	105	18	75	14	1.05
25	---	30.00	31.00	4	115	18	85	14	1.27	115	18	85	14	1.27
	33.70	---	34.40	4	115	18	85	14	1.25	115	18	85	14	1.25
32	---	38.00	39.00	4	140	18	100	18	1.86	140	18	100	18	1.86
	42.40	---	43.10	4	140	18	100	18	1.83	140	18	100	18	1.83
40	---	44.50	45.50	4	150	18	110	18	2.12	150	18	110	18	2.12
	48.30	---	49.00	4	150	18	110	18	2.09	150	18	110	18	2.09
50	---	57.00	58.10	4	165	20	125	18	2.78	165	20	125	18	2.78
	60.30	---	61.10	4	165	20	125	18	2.74	165	20	125	18	2.74
65	76.10	---	77.10	8	185	22	145	18	3.48	185	22	145	18	3.48
80	88.90	---	90.30	8	200	24	160	18	4.33	200	24	160	18	4.33
100	---	108.00	109.60	8	235	24	190	22	5.82	235	24	190	22	5.82
	114.30	---	115.90	8	235	24	190	22	5.61	235	24	190	22	5.61
125	---	133.00	134.80	8	270	26	220	26	7.91	270	26	220	26	7.91
	139.70	---	141.60	8	270	26	220	26	7.60	270	26	220	26	7.60
150	---	159.00	161.10	8	300	28	250	26	10.12	300	28	250	26	10.12
	168.30	---	170.50	8	300	28	250	26	9.58	300	28	250	26	9.58
175	193.70	---	196.10	12	330	28	280	26	10.76	350	32	295	30	14.45
200	219.10	---	221.80	12	360	30	310	26	13.37	375	34	320	30	16.90
250	---	267.00	270.20	12	425	32	370	30	19.10	450	38	385	33	27.28
	273.00	---	276.20	12	425	32	370	30	18.45	450	38	385	33	26.51
300	323.90	---	327.60	16	485	34	430	30	23.79	515	42	450	33	36.38
350	355.60	---	359.70	16	555	38	490	33	37.77	580	46	510	36	52.83
	---	368.00	372.20	16	555	38	490	33	35.63	580	46	510	36	50.24
400	406.40	---	411.00	16	620	40	550	36	48.03	660	50	585	39	74.71
	---	419.00	423.70	16	620	40	550	36	45.41	660	50	585	39	71.44
500	508.00	---	513.60	20	730	44	660	36	65.97	755	52	670	42	86.87
600	610.00	---	616.50	20	845	50	770	39	93.57	890	54	795	48	121.84
700	711.00	---	716.00	24	960	52	875	42	117.53	995	58	900	48	150.93
800	813.00	---	818.00	24	1085	56	990	48	156.34	1140	64	1030	56	219.08
900	914.00	---	920.00	28	1185	62	1090	48	188.57	1250	70	1140	56	271.16
1000	1016.00	---	1022.00	28	1320	68	1210	56	255.79	1360	78	1250	56	344.95



DN	No. of Holes	PN 6					PN 10				
		D	b	k	d2	KG	D	b	k	d2	KG
10	4	75	12	50	11	0.38	90	14	60	14	0.63
15	4	80	12	55	11	0.44	95	14	65	14	0.71
20	4	90	14	65	11	0.66	105	16	75	14	1.01
25	4	100	14	75	11	0.82	115	16	85	14	1.23
32	4	120	14	90	14	1.18	140	16	100	18	1.81
40	4	130	14	100	14	1.39	150	16	110	18	2.09
50	4	140	14	110	14	1.62	165	18	125	18	2.88
65	4	160	14	130	14	2.14	185	18	145	18	3.65
80	4	190	16	150	18	3.43	200	20	160	18	4.61
100	4	210	16	170	18	4.22	220	20	180	18	5.65
125	8	240	18	200	18	6.10	250	22	210	18	8.13
150	8	265	18	225	18	7.51	285	22	240	22	10.49
175	8	295	20	255	18	10.41	315	24	270	22	14.11
200	8	320	20	280	18	12.31	340	24	295	22	16.53
250	12	375	22	335	18	18.55	395	26	350	22	24.08
300	12	440	22	395	22	25.47	445	26	400	22	30.81
350	12	490	22	445	22	31.78	505	26	460	22	39.64
400	16	540	22	495	22	38.50	565	26	515	26	49.44
500	20	645	24	600	22	60.13	670	28	620	26	75.16
600	20	755	28	705	26	96.07	780	30	725	30	109.20
700	24	860	30	810	26	133.80	895	32	840	30	153.77
800	24	975	32	920	30	183.29	1015	36	950	33	222.86
900	24	1075	36	1020	30	251.70	1115	40	1050	33	299.08
1000	28	1175	42	1120	30	350.98	1230	46	1160	36	418.78

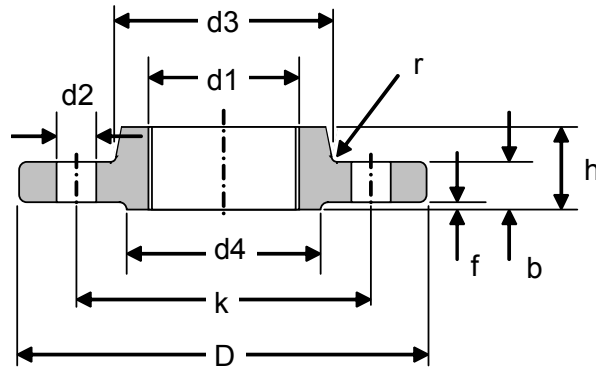
DN	No. of Holes	PN 16					PN 25				
		D	b	k	d2	KG	D	b	k	d2	KG
10	4	90	14	60	14	0.63	90	16	60	14	0.72
15	4	95	14	65	14	0.71	95	16	65	14	0.81
20	4	105	16	75	14	1.01	105	18	75	14	1.14
25	4	115	16	85	14	1.23	115	18	85	14	1.38
32	4	140	16	100	18	1.81	140	18	100	18	2.03
40	4	150	16	110	18	2.09	150	18	110	18	2.35
50	4	165	18	125	18	2.88	165	20	125	18	3.20
65	4	185	18	145	18	3.65	185	22	145	18	4.29
80	8	200	20	160	18	4.61	200	24	160	18	5.54
100	8	220	20	180	18	5.65	235	24	190	22	7.60
125	8	250	22	210	18	8.13	270	26	220	26	10.82
150	8	285	22	240	22	10.49	300	28	250	26	14.60
175	8	315	24	270	22	14.11	330	28	280	26	17.40
200	12	340	24	295	22	16.25	360	30	310	26	22.47
250	12	405	26	355	26	24.99	425	32	370	30	33.51
300	12	460	28	410	26	35.13	485	34	430	30	46.29
350	16	520	30	470	26	48.01	555	38	490	33	68.08
400	16	580	32	525	30	63.53	620	40	550	36	89.69
500	20	715	36	650	33	108.63	730	45	660	36	140.66
600	20	780	38	770	36	136.47	845	48	770	39	202.30
700	24	895	40	840	36	189.87	960	50	875	42	271.05
800	24	1015	44	950	39	269.57	1085	54	990	48	373.52
900	28	1115	48	1050	39	355.31	1185	58	1090	48	479.07
1000	28	1230	52	1170	42	469.20	1320	62	1210	56	632.47

WHILE EVERY EFFORT HAS BEEN MADE, TO ENSURE THAT THE INFORMATION GIVEN ON THIS PAGE IS ACCURATE, LUDA FLANGES DOES NOT ACCEPT RESPONSIBILITY FOR ANY INACCURACIES OR MISINTERPRETATIONS OF THIS DATA.



DN	No. of Holes	PN 40					PN 64					
		D	b	k	d2	KG	b	k	d4	f	d2	KG
10	4	90	16	60	14	0.72	20	70	40	2	14	1.04
15	4	95	16	65	14	0.81	20	75	45	2	14	1.16
20	4	105	18	75	14	1.14	24	100	68	2	18	2.54
25	4	115	18	85	14	1.38	24	110	78	2	22	3.07
32	4	140	18	100	18	2.03	26	125	88	3	22	3.97
40	4	150	18	110	18	2.35	26	135	102	3	22	4.51
50	4	165	20	125	18	3.20	26	160	122	3	22	5.69
65	8	185	22	145	18	4.29	28	170	138	3	22	6.88
80	8	200	24	160	18	5.54	30	200	162	3	26	9.99
100	8	235	24	190	22	7.60	34	240	188	3	30	15.91
125	8	270	26	220	26	10.82	36	280	218	3	33	23.32
150	8	300	28	250	26	14.60	40	310	260	3	33	30.35
175	12	350	32	295	30	22.04	42	345	285	3	36	39.17
200	12	375	34	320	30	27.21	46	400	345	3	36	56.64
250	12	450	38	385	33	44.38	52	460	410	4	36	81.14
300	16	515	42	450	33	64.17	56	525	465	4	39	112.95
350	16	580	46	510	36	89.52	60	585	535	4	42	152.30
400	16	660	50	585	39	126.78	--	--	--	--	--	--
500	20	755	56	670	42	184.63	--	--	--	--	--	--
600	20	890	62	795	48	285.17	--	--	--	--	--	--
700	24	995	64	900	48	368.83	--	--	--	--	--	--
800	24	1140	70	1030	56	528.39	--	--	--	--	--	--
900	28	1250	76	1140	56	690.99	--	--	--	--	--	--
1000	28	1360	84	1250	56	912.42	--	--	--	--	--	--

PN100									
DN	D	b	k	d4	f	No. of Holes	d2	KG	
10	100	20	70	40	2	4	14	1.04	
15	105	20	75	45	2	4	14	1.16	
25	140	24	100	68	2	4	18	2.54	
32	155	24	110	78	2	4	22	3.07	
40	170	26	125	88	3	4	22	3.97	
50	195	28	145	102	3	4	26	5.64	
65	220	30	170	122	3	8	26	7.43	
80	230	32	180	138	3	8	26	8.84	
100	265	36	210	162	3	8	30	13.31	
125	315	40	250	188	3	8	33	21.30	
150	355	44	290	218	3	12	33	29.43	
175	385	48	320	260	3	12	33	38.75	
200	430	52	360	285	3	12	36	52.66	
250	505	60	430	345	3	12	39	85.41	
300	585	68	500	410	4	16	42	128.05	
350	655	74	560	465	4	16	48	174.58	

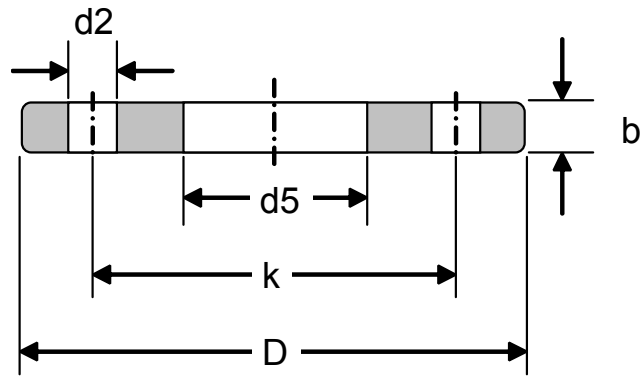


2565 PN 6

DN	d1	DIN2999	D	b	k	h1	d3	d4	f	No. of Holes	d2	KG
6	10.2	R1/8	65	10	40	18	18	25	2	4	11.5	0.19
8	13.5	R1/4	70	10	45	18	22	30	2	4	11.5	0.23
10	17.2	R3/8	75	12	50	20	25	35	2	4	11.5	0.32
15	21.3	R1/2	80	12	55	20	30	40	2	4	11.5	0.37
20	26.9	R3/4	90	14	65	24	40	50	2	4	11.5	0.58
25	33.7	R1	100	14	75	24	50	60	2	4	11.5	0.73
32	42.4	R1.1/4	120	14	90	26	60	70	2	4	14.0	1.05
40	48.3	R1.1/2	130	14	100	26	70	80	3	4	14.0	1.20
50	50.3	R2	140	14	110	28	80	90	3	4	14.0	1.54
65	76.1	R2.1/2	160	14	130	32	100	110	3	4	14.0	1.87
80	88.9	R3	190	16	150	34	110	128	3	4	18.0	2.78
100	114.3	R4	210	16	170	38	130	148	3	4	18.0	3.07
150	139.7	R5	240	18	200	40	160	178	3	8	18.0	4.33
200	168.3	R6	265	18	225	44	185	202	3	8	18.0	4.81

2566 PN 16

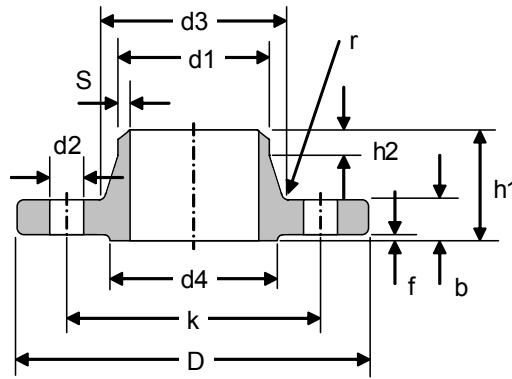
DN	d1	DIN2999	D	b	k	h1	d3	d4	f	No. of Holes	d2	KG
6	10.2	R1/8	75	12	50	18	20	32	2	4	11	0.33
8	13.5	R1/4	80	12	55	18	25	38	2	4	11	0.39
10	17.2	R3/8	90	14	60	20	30	40	2	4	14	0.56
15	21.3	R1/2	95	14	65	20	35	45	2	4	14	0.62
20	26.9	R3/4	105	16	75	24	45	58	2	4	14	0.92
25	33.7	R1	115	16	85	24	52	68	2	4	14	1.10
32	42.4	R1.1/4	140	16	100	26	60	78	2	4	18	1.59
40	48.3	R1.1/2	150	16	110	26	70	88	3	4	18	1.77
50	60.3	R2	165	18	125	28	85	102	3	4	18	2.41
65	76.1	R2.1/2	185	18	145	32	105	122	3	4	18	3.13
80	88.9	R3	200	20	160	34	118	138	3	4	18	3.95
100	114.3	R4	220	20	180	38	140	158	3	8	18	4.38
125	139.7	R3	250	22	210	40	168	188	3	8	18	5.99
150	168.3	R4	285	22	240	44	196	212	3	8	22	7.42



D IN 2 5 7 3 P N 6									
DN	d1		d5	D	b	k	No. of Holes	d2	KG
	ISO	DIN							
10	---	14.00	14.50	75	12	50	4	11	0.36
	17.20	---	17.70	75	12	50	4	11	0.36
15	---	20.00	21.00	80	12	55	4	11	0.41
	21.30	---	22.00	80	12	55	4	11	0.40
20	---	25.00	26.00	90	14	65	4	11	0.60
	26.90	---	27.60	90	14	65	4	11	0.59
25	---	30.00	31.00	100	14	75	4	11	0.74
	33.70	---	34.40	100	14	75	4	11	0.72
32	---	38.00	39.00	120	16	90	4	14	1.19
	42.40	---	43.10	120	16	90	4	14	1.16
40	---	44.50	45.50	130	16	100	4	14	1.39
	48.30	---	49.00	130	16	100	4	14	1.35
50	---	57.00	58.10	140	16	110	4	14	1.52
	60.30	---	61.10	140	16	110	4	14	1.49
65	---	---	77.10	160	16	130	4	14	1.86
	88.90	---	90.30	190	18	150	4	18	2.96
100	---	108.00	109.60	210	18	170	4	18	3.42
	114.30	---	115.90	210	18	170	4	18	3.26
125	---	133.00	134.80	240	20	200	8	18	4.54
	139.70	---	141.60	240	20	200	8	18	4.31
150	---	159.00	161.10	265	20	225	8	18	5.14
	168.30	---	170.50	265	20	225	8	18	4.76
200	---	---	221.80	320	22	280	8	18	6.87
	219.10	---	221.80	320	22	280	8	18	6.87
250	---	267.00	270.20	375	24	335	12	18	9.43
	273.00	---	276.20	375	24	335	12	18	8.94
300	---	---	327.60	440	24	395	12	22	11.91
	323.90	---	327.60	440	24	395	12	22	11.91
350	---	---	359.70	490	26	445	12	22	16.82
	355.60	---	359.70	490	26	445	12	22	16.82
400	---	368.00	372.20	490	26	445	12	22	15.35
	406.40	---	411.00	540	28	495	16	22	19.84
450	---	419.00	423.70	540	28	495	16	22	18.01
	457.00	---	462.30	595	30	550	16	22	24.52
500	508.00	---	513.60	645	30	600	20	22	26.37

D IN 2 5 7 6 P N 1 0									
DN	d1		d5	D	b	k	No. of Holes	d2	KG
	ISO	DIN							
10	---	14.00	14.50	90	14	60	4	14	0.61
	17.20	---	17.70	90	14	60	4	14	0.60
15	---	20.00	21.00	95	14	65	4	14	0.67
	21.30	---	22.00	95	14	65	4	14	0.67
20	---	25.00	26.00	105	16	75	4	14	0.94
	26.90	---	27.60	105	16	75	4	14	0.94
25	---	30.00	31.00	115	16	85	4	14	1.13
	33.70	---	34.40	115	16	85	4	14	1.11
32	---	38.00	39.00	140	16	100	4	18	1.66
	42.40	---	43.10	140	16	100	4	18	1.62
40	---	44.50	45.50	150	16	110	4	18	1.89
	48.30	---	49.00	150	16	110	4	18	1.85
50	---	57.00	58.10	165	18	125	4	18	2.50
	60.30	---	61.10	165	18	125	4	18	2.46
65	---	---	77.10	185	18	145	4	18	2.99
	88.90	---	90.30	200	20	160	8	18	3.61
100	---	108.00	109.60	220	20	180	8	18	4.17
	114.30	---	115.90	220	20	180	8	18	3.99
125	---	133.00	134.80	250	22	210	8	18	5.66
	139.70	---	141.60	250	22	210	8	18	5.41
150	---	159.00	161.10	285	22	240	8	22	6.97
	168.30	---	170.50	285	22	240	8	22	6.55
175	---	---	196.10	315	24	270	8	22	8.42
	219.10	---	221.80	340	24	295	8	22	9.25
200	---	---	221.80	340	24	295	8	22	9.25
	219.10	---	221.80	340	24	295	8	22	9.25
250	---	267.00	270.20	395	26	350	12	22	12.38
	273.00	---	276.20	395	26	350	12	22	11.85
300	---	---	327.60	445	26	400	12	22	13.61
	323.90	---	327.60	445	26	400	12	22	13.61
350	---	---	359.70	505	28	460	16	22	20.35
	355.60	---	359.70	505	28	460	16	22	20.35
400	---	368.00	372.20	505	28	460	16	22	18.77
	406.40	---	411.00	565	32	515	16	26	27.52
450	---	419.00	423.70	565	32	515	16	26	25.43
	457.00	---	462.30	615	38	565	20	26	35.37
500	---	---	513.60	670	38	620	20	26	40.20
	508.00	---	513.60	670	38	620	20	26	40.20
600	610.00	---	616.50	780	40	725	20	30	51.87

WHILE EVERY EFFORT HAS BEEN MADE, TO ENSURE THAT THE INFORMATION GIVEN ON THIS PAGE IS ACCURATE, LUDA FLANGES DOES NOT ACCEPT RESPONSIBILITY FOR ANY INACCURACIES OR MISINTERPRETATIONS OF THIS DATA.

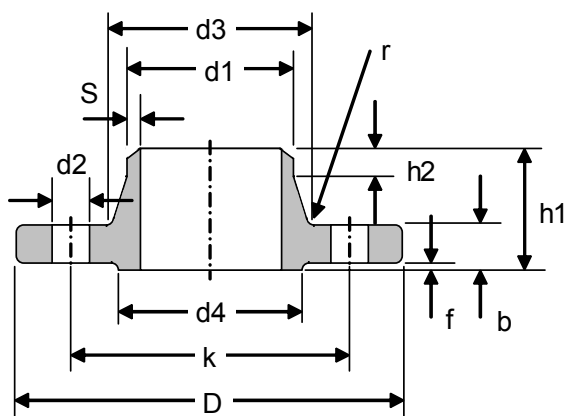


DIN2629 PN320

DN	d1		D	b	k	h1	d3	s	r	h2	d4	f	No. of Holes	d2	KG
	ISO	DIN													
10	---	14.0	125	24	85	58	44	2.6	4	6	40	2	4	18	2.10
	17.2	---	125	24	85	58	44	2.6	4	6	40	2	4	18	2.09
15	---	20.0	130	26	90	60	48	3.2	4	6	45	2	4	18	2.49
	21.3	---	130	26	90	60	48	3.2	4	6	45	2	4	18	2.49
25	---	30.0	160	34	115	78	68	5	4	8	68	2	4	22	5.14
	33.7	---	160	34	115	78	68	5	4	8	68	2	4	22	5.11
40	---	44.5	195	38	145	88	92	6.3	6	10	88	3	4	26	8.53
	48.3	---	195	38	145	88	92	6.3	6	10	88	3	4	26	8.47
50	63.5	---	210	42	160	100	106	8	6	10	102	3	8	26	10.52
65	88.9	---	255	51	200	120	138	11	6	12	122	3	8	30	19.26
80	101.6	---	275	55	220	130	156	12.5	8	14	138	3	8	30	24.81
100	---	133.0	335	65	265	145	186	16	8	16	162	3	8	36	42.18
125	---	159.0	380	75	310	175	230	20	8	20	188	3	12	36	64.55
	168.3	---	380	75	310	175	230	20	8	20	188	3	12	36	63.30
150	193.7	---	425	84	350	195	265	25	10	25	218	3	12	39	91.04
175	219.1	---	485	95	400	215	308	28	10	28	260	3	12	42	135.46
200	244.5	---	525	103	440	235	345	30	10	30	285	3	16	42	170.94
250	323.9	---	640	125	540	300	428	40	12	40	345	3	16	52	311.99

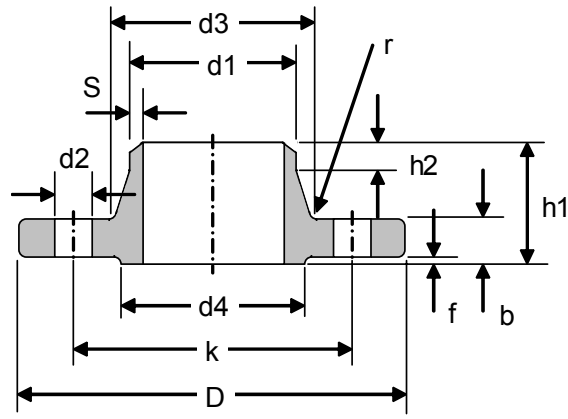
DIN 2630 PN 2.5

DN	d1		D	b	k	h1	d3	s	r	h2	d4	f	No. of Holes	d2	KG
	ISO	DIN													
10	---	14	75	12	50	28	22	1.8	4	6	35	2	4	11	0.34
	17.20	---	75	12	50	28	26	1.8	4	6	35	2	4	11	0.34
15	---	20.0	80	12	55	30	28	2	4	6	40	2	4	11	0.39
	21.30	---	80	12	55	30	30	2	4	6	40	2	4	11	0.40
20	---	25.0	90	14	65	32	35	2.3	4	6	50	2	4	11	0.60
	26.90	---	90	14	65	32	38	2.3	4	6	50	2	4	11	0.60
25	---	30.0	100	14	75	35	40	2.6	4	6	60	2	4	11	0.76
	33.70	---	100	14	75	35	42	2.6	4	6	60	2	4	11	0.75
32	---	38.00	120	14	90	35	50	2.6	6	6	70	2	4	14	1.07
	42.40	---	120	14	90	35	55	2.6	6	6	70	2	4	14	1.06
40	---	44.50	130	14	100	38	58	2.6	6	7	80	3	4	14	1.21
	48.30	---	130	14	100	38	62	2.6	6	7	80	3	4	14	1.20
50	---	57.00	140	14	110	38	70	2.9	6	8	90	3	4	14	1.37
	60.30	---	140	14	110	38	74	2.9	6	8	90	3	4	14	1.36
65	76.10	---	160	14	130	38	88	2.9	6	9	110	3	4	14	1.69
80	88.90	---	190	16	150	42	102	3.2	8	10	128	3	4	18	2.72
100	---	108.00	210	16	170	45	122	3.6	8	10	148	3	4	18	3.29
	114.30	---	210	16	170	45	130	3.6	8	10	148	3	4	18	3.22
125	---	133.00	240	18	200	48	148	4	8	10	178	3	8	18	4.58
	139.70	---	240	18	200	48	155	4	8	10	178	3	8	18	4.42
150	---	159.00	265	18	225	48	172	4.5	10	12	202	3	8	18	5.26
	168.30	---	265	18	225	48	184	4.5	10	12	202	3	8	18	5.04
200	---	---	320	20	280	55	236	5.9	10	15	258	3	8	18	7.95
	219.10	---	320	20	280	55	248	5.9	10	15	258	3	8	18	7.95
250	---	267.00	375	22	335	60	282	6.3	12	15	312	3	12	18	11.16
	273.00	---	375	22	335	60	290	6.3	12	15	312	3	12	18	10.87
300	---	---	440	22	395	62	342	7.1	12	15	365	4	12	22	14.26
	323.90	---	440	22	395	62	342	7.1	12	15	365	4	12	22	14.26
350	---	---	490	22	445	62	385	7.1	12	15	415	4	12	22	18.54
	356.60	---	490	22	445	62	385	7.1	12	15	415	4	12	22	18.54
400	---	---	540	22	495	65	438	7.1	12	15	465	4	16	22	21.25
	408.40	---	540	22	495	65	438	7.1	12	15	465	4	16	22	21.10
500	508.00	---	645	24	600	68	538	7.1	12	15	570	4	20	22	28.67
600	610.00	---	755	24	705	70	640	7.1	12	16	670	5	20	26	34.80
700	711.00	---	860	24	810	70	740	7.1	12	16	775	5	24	26	40.94
800	813.00	---	975	24	920	70	842	7.1	12	16	880	5	24	30	49.19
900	914.00	---	1075	26	1020	70	942	7.1	12	16	980	5	24	30	58.10
1000	1016.00	---	1175	26	1120	70	1045	7.1	16	16	1080	5	28	30	63.48
1200	1220.00	---	1375	26	1320	70	1245	7	16	16	1280	5	32	30	72.93
1400	1420.00	---	1575	26	1520	70	1445	7	16	16	1480	5	36	30	84.51
1600	1620.00	---	1790	26	1730	80	1645	8	16	20	1690	5	40	30	111.51
1800	1820.00	---	1990	26	1930	80	1845	9	16	20	1890	5	44	30	128.48
2000	2020.00	---	2190	26	2130	80	2045	10	16	22	2090	5	48	30	145.60
2200	2220.00	---	2405	28	2340	90	2248	10	18	25	2295	6	52	33	161.19
2400	2420.00	---	2605	28	2540	90	2448	10	18	25	2495	6	56	33	200.47
2600	2620.00	---	2805	28	2740	90	2648	10	18	25	2695	6	60	33	216.74
2800	2820.00	---	3030	30	2960	90	2848	10	18	25	2910	6	64	36	268.05
3000	3020.00	---	3230	30	3160	90	3050	10	18	25	3110	6	68	36	288.00
3200	3220.00	---	3430	30	3360	90	3250	10	20	25	3310	6	72	36	308.73
3400	3420.00	---	3630	32	3560	95	3450	10	20	28	3510	6	76	36	346.70
3600	3620.00	---	3840	32	3770	100	3652	10	20	28	3720	6	80	36	391.30
3800	3820.00	---	4045	34	3970	100	3852	10	20	28	3920	6	80	39	435.80
4000	4020.00	---	4245	34	4170	100	4052	10	20	28	4120	6	84	39	458.20

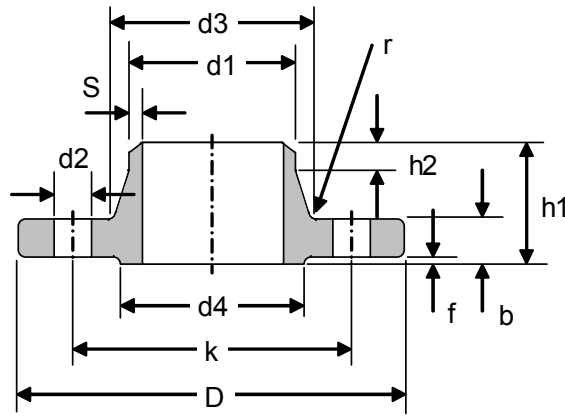


PN6

DN	d1		D	b	k	h1	d3	s	r	h2	d4	f	No. of Holes	d2	KG
	ISO	DIN													
10	---	14	75	12	50	28	22	1.8	4	6	35	2	4	11	0.34
	17.20	---	75	12	50	28	26	1.8	4	6	35	2	4	11	0.34
15	---	20.00	80	12	55	30	28	2	4	6	40	2	4	11	0.39
	21.30	---	80	12	55	30	30	2	4	6	40	2	4	11	0.40
20	---	25.00	90	14	65	32	35	2.3	4	6	50	2	4	11	0.60
	26.90	---	90	14	65	32	38	2.3	4	6	50	2	4	11	0.60
25	---	30.00	100	14	75	35	40	2.6	4	6	60	2	4	11	0.76
	33.70	---	100	14	75	35	42	2.6	4	6	60	2	4	11	0.75
32	---	38.00	120	14	90	35	50	2.6	6	6	70	2	4	14	1.07
	42.40	---	120	14	90	35	55	2.6	6	6	70	2	4	14	1.06
40	---	44.50	130	14	100	38	58	2.6	6	7	80	3	4	14	1.21
	48.30	---	130	14	100	38	62	2.6	6	7	80	3	4	14	1.20
50	---	57.00	140	14	110	38	70	2.9	6	8	90	3	4	14	1.37
	60.30	---	140	14	110	38	74	2.9	6	8	90	3	4	14	1.36
65	76.10	---	160	14	130	38	88	2.9	6	9	110	3	4	14	1.69
80	88.90	---	190	16	150	42	102	3.2	8	10	128	3	4	18	2.72
100	---	108.00	210	16	170	45	122	3.6	8	10	148	3	4	18	3.29
	114.30	---	210	16	170	45	130	3.6	8	10	148	3	4	18	3.22
125	---	133.00	240	18	200	48	148	4	8	10	178	3	8	18	4.58
	139.70	---	240	18	200	48	155	4	8	10	178	3	8	18	4.42
150	---	159.00	265	18	225	48	172	4.5	10	12	202	3	8	18	5.26
	168.30	---	265	18	225	48	184	4.5	10	12	202	3	8	18	5.04
200	219.10	---	320	20	280	55	236	5.9	10	15	258	3	8	18	7.95
250	---	267.00	375	22	335	60	282	6.3	12	15	312	3	12	18	11.16
	273.00	---	375	22	335	60	290	6.3	12	15	312	3	12	18	10.87
300	323.90	---	440	22	395	62	342	7.1	12	15	365	4	12	22	14.26
350	355.60	---	490	22	445	62	385	7.1	12	15	415	4	12	22	18.54
	---	368.00	490	22	445	62	385	7.1	12	15	415	4	12	22	16.78
400	406.40	---	540	22	495	65	438	7.1	12	15	465	4	16	22	21.25
	---	419.00	540	22	495	65	438	7.1	12	15	465	4	16	22	19.10
500	508.00	---	645	24	600	68	538	7.1	12	15	570	4	20	22	28.67
600	610.00	---	755	24	705	70	640	7.1	12	16	670	5	20	26	34.80
700	711.00	---	860	24	810	70	740	7.1	12	16	775	5	24	26	40.94
800	813.00	---	975	24	920	70	842	7.1	12	16	880	5	24	30	49.19
900	914.00	---	1075	26	1020	70	942	7.1	12	16	980	5	24	30	58.10
1000	1016.00	---	1175	26	1120	70	1045	7.1	16	16	1080	5	28	30	63.48
1200	1220.00	---	1405	28	1340	90	1248	8	16	20	1295	5	32	33	100.17
1400	1420.00	---	1630	32	1560	90	1452	8	16	20	1510	5	36	36	142.78
1600	1620.00	---	1830	34	1760	90	1655	9	16	20	1710	5	40	36	174.36
1800	1820.00	---	2045	36	1970	100	1855	10	16	20	1920	5	44	39	226.98
2000	2020.00	---	2265	38	2180	110	2058	11	16	25	2125	5	48	42	292.12
2200	2220.00	---	2475	42	2390	115	2260	12	18	25	2335	6	52	42	366.33
2400	2420.00	---	2685	44	2600	125	2462	13	18	25	2545	6	56	42	448.52
2600	2620.00	---	2905	46	2810	130	2665	14	18	25	2750	6	60	48	540.16
3800	2820.00	---	3115	48	3020	135	2865	15	18	30	2960	6	64	48	630.03
3000	3020.00	---	3315	50	3220	140	3068	16	18	30	3160	6	68	48	716.33
3200	3220.00	---	3525	54	3430	150	3272	16	20	30	3370	6	72	48	854.42
3400	3420.00	---	3735	46	3640	160	3475	18	20	35	3580	6	76	48	887.81
3600	3620.00	---	3970	60	3860	165	3678	18	20	35	3790	6	80	56	1202.43

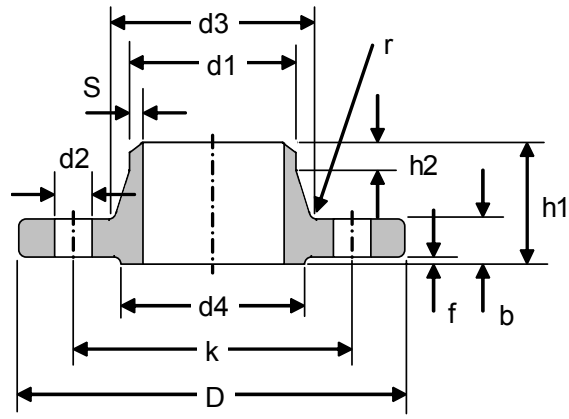


PN10															
DN	d1		D	b	k	h1	d3	s	r	h2	d4	f	n	d2	KG
	ISO	DIN													
10	---	14.0	90	14	60	35	25	1.8	4	6	40	2	4	14	0.58
	17.2	---	90	14	60	35	28	1.8	4	6	40	2	4	14	0.58
15	---	20.0	95	14	65	35	30	2.0	4	6	45	2	4	14	0.65
	21.3	---	95	14	65	35	32	2.0	4	6	45	2	4	14	0.65
20	---	25.0	105	16	75	38	38	2.3	4	6	58	2	4	14	0.95
	26.9	---	105	16	75	38	40	2.3	4	6	58	2	4	14	0.95
25	---	30.0	115	16	85	38	42	2.6	4	6	68	2	4	14	1.15
	33.7	---	115	16	85	38	45	2.6	4	6	68	2	4	14	1.14
32	---	38.0	140	16	100	40	52	2.6	6	6	78	2	4	18	1.67
	42.4	---	140	16	100	40	56	2.6	6	6	78	2	4	18	1.65
40	---	44.5	150	16	110	42	60	2.6	6	7	88	3	4	18	1.85
	48.3	---	150	16	110	42	64	2.6	6	7	88	3	4	18	1.83
50	---	57.0	165	18	125	45	72	2.9	6	8	102	3	4	18	2.51
	60.3	---	165	18	125	45	75	2.9	6	8	102	3	4	18	2.48
65	76.1	---	185	18	145	45	90	2.9	6	10	122	3	4	18	3.03
80	88.9	---	200	20	160	50	105	3.2	8	10	138	3	8	18	3.82
100	---	108.0	220	20	180	52	125	3.6	8	12	158	3	8	18	4.54
	114.3	---	220	20	180	52	131	3.6	8	12	158	3	8	18	4.41
125	---	133.0	250	22	210	55	150	4.0	8	12	188	3	8	18	6.28
	139.7	---	250	22	210	55	156	4.0	8	12	188	3	8	18	6.07
150	---	159.0	285	22	240	55	175	4.5	10	12	212	3	8	22	7.75
	168.3	---	285	22	240	55	184	4.5	10	12	212	3	8	22	7.40
200	219.1	---	340	24	295	62	235	5.9	10	16	268	3	8	22	11.10
250	---	267.0	395	26	350	68	285	6.3	12	16	320	3	12	22	15.31
	273.0	---	395	26	350	68	292	6.3	12	16	320	3	12	22	14.92
300	323.9	---	445	26	400	68	344	7.1	12	16	370	4	12	22	17.47
350	355.6	---	505	26	460	68	385	7.1	12	16	430	4	16	22	23.70
	---	368.0	505	26	460	68	385	7.1	12	16	430	4	16	22	21.71
400	406.4	---	565	26	515	72	440	7.1	12	16	482	4	16	26	28.72
	---	419.0	565	26	515	72	440	7.1	12	16	482	4	16	26	26.27
450	457.2	---	615	26	565	72	478	7.1	12	16	532	4	20	26	30.40
500	508.0	---	670	28	620	75	542	7.1	12	16	585	4	20	26	38.27
600	610.0	---	780	28	725	80	642	7.1	12	18	685	5	20	30	46.56
700	711.0	---	895	30	840	80	745	8.0	12	18	800	5	24	30	62.30
800	813.0	---	1015	32	950	90	850	8.0	12	18	905	5	24	33	83.81
900	914.0	---	1115	34	1050	95	950	10.0	12	20	1005	5	28	33	102.46
1000	1016.0	---	1230	34	1160	95	1052	10.0	16	20	1110	5	28	36	118.53
1200	1220.0	---	1455	38	1380	115	1255	11.0	16	25	1330	5	32	39	178.18
1400	1420.0	---	1675	42	1590	120	1460	12.0	16	25	1535	5	36	42	244.76
1600	1620.0	---	1915	46	1820	130	1665	14.0	16	25	1760	5	40	48	353.74
1800	1820.0	---	2115	50	2020	140	1868	15.0	16	30	1960	5	44	48	436.33
2000	2020.0	---	2325	54	2230	150	2072	16.0	16	30	2170	5	48	48	548.04
2200	2220.0	---	2550	58	2440	160	2275	18.0	18	35	2370	6	52	56	685.10
2400	2420.0	---	2760	62	2650	170	2478	20.0	18	35	2570	6	56	56	840.04
2600	2620.0	---	2960	66	2850	180	2680	22.0	18	40	2780	6	60	56	990.16
2800	2820.0	---	3180	70	3070	190	2882	22.0	18	40	3000	6	64	56	1187.16
3000	3020.0	---	3405	75	3290	200	3085	24.0	18	45	3210	6	68	62	1437.06



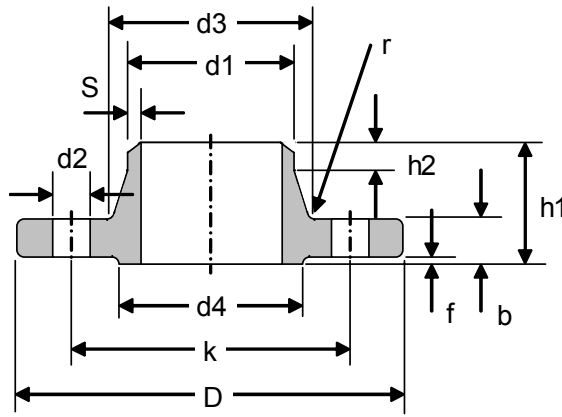
PN16

DN	d1		D	b	k	h1	d3	s	r	h2	d4	f	n	d2	KG
	ISO	DIN													
10	---	14.0	90	14	60	35	25	1.8	4	6	40	2	4	14	0.58
	17.2	---	90	14	60	35	28	1.8	4	6	40	2	4	14	0.58
15	---	20.0	95	14	65	35	30	2.0	4	6	45	2	4	14	0.65
	21.3	---	95	14	65	35	32	2.0	4	6	45	2	4	14	0.65
20	---	25.0	105	16	75	38	38	2.3	4	6	58	2	4	14	0.95
	26.9	---	105	16	75	38	40	2.3	4	6	58	2	4	14	0.95
25	---	30.0	115	16	85	38	42	2.6	4	6	68	2	4	14	1.15
	33.7	---	115	16	85	38	45	2.6	4	6	68	2	4	14	1.14
32	---	38.0	140	16	100	40	52	2.6	6	6	78	2	4	18	1.67
	42.4	---	140	16	100	40	56	2.6	6	6	78	2	4	18	1.65
40	---	44.5	150	16	110	42	60	2.6	6	7	88	3	4	18	1.85
	48.3	---	150	16	110	42	64	2.6	6	7	88	3	4	18	1.83
50	---	57.0	165	18	125	45	72	2.9	6	8	102	3	4	18	2.51
	60.3	---	165	18	125	45	75	2.9	6	8	102	3	4	18	2.48
65	76.1	---	185	18	145	45	90	2.9	6	10	122	3	4	18	3.03
80	88.9	---	200	20	160	50	105	3.2	8	10	138	3	8	18	3.82
100	---	108.0	220	20	180	52	125	3.6	8	12	158	3	8	18	4.54
	114.3	---	220	20	180	52	131	3.6	8	12	158	3	8	18	4.41
125	---	133.0	250	22	210	55	150	4.0	8	12	188	3	8	18	6.28
	139.7	---	250	22	210	55	156	4.0	8	12	188	3	8	18	6.07
150	---	159.0	285	22	240	55	175	4.5	10	12	212	3	8	22	7.75
	168.3	---	285	22	240	55	184	4.5	10	12	212	3	8	22	7.40
175	193.7	---	315	24	270	60	210	5.4	10	12	242	3	8	22	9.86
200	219.1	---	340	24	295	62	235	5.9	10	16	268	3	12	22	10.85
250	---	267.0	405	26	355	70	285	6.3	12	16	320	3	12	26	16.26
	273.0	---	405	26	355	70	292	6.3	12	16	320	3	12	26	15.87
300	323.9	---	460	28	410	78	344	7.1	12	16	378	4	12	26	21.24
350	355.6	---	520	30	470	82	390	8.0	12	16	438	4	16	26	31.38
	---	368.0	520	30	470	82	390	8.0	12	16	438	4	16	26	28.95
400	406.4	---	580	32	525	85	445	8.0	12	16	490	4	16	30	39.30
	---	419.0	580	32	525	85	445	8.0	12	16	490	4	16	30	36.30
500	508.0	---	715	34	650	90	548	8.0	12	16	610	4	20	33	59.63
600	610.0	---	840	36	770	95	652	8.8	12	18	725	5	20	36	82.54
700	711.0	---	910	36	840	100	755	8.8	12	18	795	5	24	36	83.90
800	813.0	---	1025	38	950	105	855	10.0	12	20	900	5	24	39	107.30
900	914.0	---	1125	40	1050	110	955	10.0	12	20	1000	5	28	39	124.97
1000	1016.0	---	1255	42	1170	120	1058	10.0	16	22	1115	5	28	42	163.76
1200	1220.0	---	1485	48	1390	130	1262	12.5	16	30	1330	5	32	48	244.15
1400	1420.0	---	1685	52	1590	145	1465	14.2	16	30	1530	5	36	48	320.87
1600	1620.0	---	1930	58	1820	160	1668	16.0	16	35	1750	5	40	56	465.83
1800	1820.0	---	2130	62	2020	170	1870	17.5	16	35	1950	5	44	56	570.52
2000	2020.0	---	2345	66	2230	180	2072	20.0	16	40	2150	5	48	62	706.74



PN25

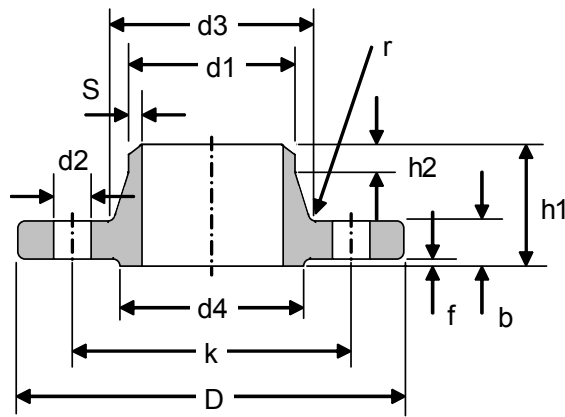
DN	d1		D	b	k	h1	d3	s	r	h2	d4	f	n	d2	KG
	ISO	DIN													
10	---	14.0	90	16	60	35	25	1.8	4	6	40	2	4	14	0.67
	17.2	---	90	16	60	35	28	1.8	4	6	40	2	4	14	0.66
15	---	20.0	95	16	65	38	30	2.0	4	6	45	2	4	14	0.75
	21.3	---	95	16	65	38	32	2.0	4	6	45	2	4	14	0.75
20	---	25.0	105	18	75	40	38	2.3	4	6	58	2	4	14	1.07
	26.9	---	105	18	75	40	40	2.3	4	6	58	2	4	14	1.07
25	---	30.0	115	18	85	40	42	2.6	4	6	68	2	4	14	1.29
	33.7	---	115	18	85	40	46	2.6	4	6	68	2	4	14	1.28
32	---	38.0	140	18	100	42	52	2.6	6	6	78	2	4	18	1.88
	42.4	---	140	18	100	42	56	2.6	6	6	78	2	4	18	1.86
40	---	44.5	150	18	110	45	60	2.6	6	7	88	3	4	18	2.10
	48.3	---	150	18	110	45	64	2.6	6	7	88	3	4	18	2.08
50	---	57.0	165	20	125	48	72	2.9	6	8	102	3	4	18	2.81
	60.3	---	165	20	125	48	75	2.9	6	8	102	3	4	18	2.78
65	76.1	---	185	22	145	52	90	2.9	6	10	122	3	8	18	3.61
80	88.9	---	200	24	160	58	105	3.2	8	12	138	3	8	18	4.62
100	---	108.0	235	24	190	65	128	3.6	8	12	162	3	8	22	6.42
	114.3	---	235	24	190	65	134	3.6	8	12	162	3	8	22	6.27
125	---	133.0	270	26	220	68	155	4.0	8	12	188	3	8	26	8.83
	139.7	---	270	26	220	68	162	4.0	8	12	188	3	8	26	8.61
150	---	159.0	300	28	250	75	182	4.5	10	12	218	3	8	26	11.67
	168.3	---	300	28	250	75	192	4.5	10	12	218	3	8	26	11.29
175	193.7	---	330	28	280	75	218	5.6	10	15	248	3	12	26	13.11
200	219.1	---	360	30	310	80	244	6.3	10	16	278	3	12	26	16.61
250	---	267.0	425	32	370	88	292	7.1	12	18	335	3	12	30	23.99
	273.0	---	425	32	370	88	298	7.1	12	18	335	3	12	30	23.48
300	323.9	---	485	34	430	92	352	8.0	12	18	395	4	16	30	30.74
350	355.6	---	555	38	490	100	398	8.0	12	20	450	4	16	33	47.20
	---	368.0	555	38	490	100	398	8.0	12	20	450	4	16	33	44.22
400	406.4	---	620	40	550	110	452	8.8	12	20	505	4	16	36	61.69
	---	419.0	620	40	550	110	452	8.8	12	20	505	4	16	36	57.88
500	508.0	---	730	44	660	125	558	10.0	12	20	615	4	20	36	89.57
600	610.0	---	845	46	770	125	660	11.0	12	20	720	5	20	39	114.96
700	711.0	---	960	46	875	125	760	12.5	12	20	820	5	24	42	139.50
800	813.0	---	1085	50	990	135	865	14.2	12	22	930	5	24	48	188.71
900	914.0	---	1185	54	1090	145	968	16.0	12	24	1030	5	28	48	231.48
1000	1016.0	---	1320	58	1210	155	1070	17.5	16	24	1140	5	28	56	303.52



DIN 2635 PN40																
DN	d1		D	b	k	h1	d3	s	r	h2	d4	f	n	d2	KG	
	ISO	DIN														
10	---	14.0	90	16	60	35	25	1.8	4	6	40	2	4	14	0.67	
	17.2	---	90	16	60	35	28	1.8	4	6	40	2	4	14	0.66	
15	---	20.0	95	16	65	38	30	2.0	4	6	45	2	4	14	0.75	
	21.3	---	95	16	65	38	32	2.0	4	6	45	2	4	14	0.75	
20	---	25.0	105	18	75	40	38	2.3	4	6	58	2	4	14	1.07	
	26.9	---	105	18	75	40	40	2.3	4	6	58	2	4	14	1.07	
25	---	30.0	115	18	85	40	42	2.6	4	6	68	2	4	14	1.29	
	33.7	---	115	18	85	40	46	2.6	4	6	68	2	4	14	1.28	
32	---	38.0	140	18	100	42	52	2.6	6	6	78	2	4	18	1.88	
	42.4	---	140	18	100	42	56	2.6	6	6	78	2	4	18	1.86	
40	---	44.5	150	18	110	45	60	2.6	6	7	88	3	4	18	2.10	
	48.3	---	150	18	110	45	64	2.6	6	7	88	3	4	18	2.08	
50	---	57.0	165	20	125	48	72	2.9	6	8	102	3	4	18	2.81	
	60.3	---	165	20	125	48	75	2.9	6	8	102	3	4	18	2.78	
65	76.1	---	185	22	145	52	90	2.9	6	10	122	3	8	18	3.61	
80	88.9	---	200	24	160	58	105	3.2	8	12	138	3	8	18	4.62	
100	---	108.0	235	24	190	65	128	3.6	8	12	162	3	8	22	6.42	
	114.3	---	235	24	190	65	134	3.6	8	12	162	3	8	22	6.27	
125	---	133.0	270	26	220	68	155	4.0	8	12	188	3	8	26	8.83	
	139.7	---	270	26	220	68	162	4.0	8	12	188	3	8	26	8.61	
150	---	159.0	300	28	250	75	182	4.5	10	12	218	3	8	26	11.67	
	168.3	---	300	28	250	75	192	4.5	10	12	218	3	8	26	11.29	
175	193.7	---	350	32	295	82	218	5.6	10	15	260	3	12	30	17.01	
200	219.1	---	375	34	320	88	244	6.3	10	16	285	3	12	30	20.49	
250	---	267.0	450	38	385	105	298	7.1	12	18	345	3	12	33	33.75	
	273.0	---	450	38	385	105	306	7.1	12	18	345	3	12	33	33.34	
300	323.9	---	515	42	450	115	362	8.0	12	18	410	4	16	33	46.55	
350	355.6	---	580	46	510	125	408	8.8	12	20	465	4	16	36	67.73	
	---	368.0	580	46	510	125	408	8.8	12	20	465	4	16	36	63.96	
400	406.4	---	660	50	585	135	462	11.0	12	20	535	4	16	39	96.73	
	---	419.0	660	50	585	135	462	11.0	12	20	535	4	16	39	91.99	
500	508.0	---	755	52	670	140	562	14.2	12	20	615	4	20	42	120.96	

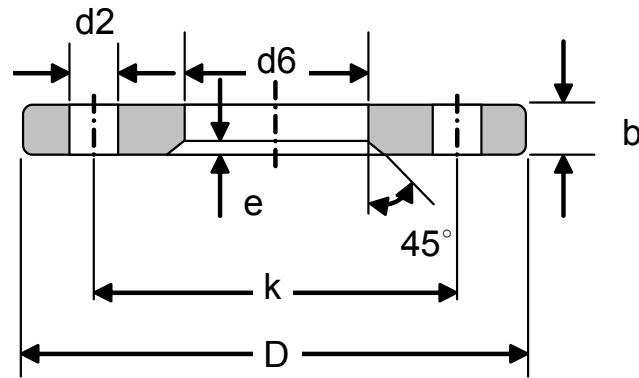
DIN 2636 PN64																
DN	d1		D	b	k	h1	d3	s	r	h2	d4	f	No. of Holes	d2	KG	
	ISO	DIN														
10	---	14.0	100	20	70	45	28	1.8	4	6	40	2	4	14	1.07	
	17.2	---	100	20	70	45	32	1.8	4	6	40	2	4	14	1.08	
15	---	20.0	105	20	75	45	32	2.0	4	6	45	2	4	14	1.19	
	21.3	---	105	20	75	45	34	2.0	4	6	45	2	4	14	1.19	
25	---	30.0	140	24	100	58	48	2.6	4	8	68	2	4	18	2.61	
	33.7	---	140	24	100	58	52	2.6	4	8	68	2	4	18	2.60	
40	---	44.5	170	26	125	62	65	2.9	6	10	88	3	4	22	4.00	
	48.3	---	170	26	125	62	70	2.9	6	10	88	3	4	22	3.99	
50	---	57.0	180	26	135	62	78	2.9	6	10	102	3	4	22	4.45	
	60.3	---	180	26	135	62	82	2.9	6	10	102	3	4	22	4.42	
65	76.1	---	205	26	160	68	98	3.2	6	12	122	3	8	22	5.49	
80	88.9	---	215	28	170	72	112	3.6	8	12	138	3	8	22	6.50	
100	---	108.0	250	30	200	78	132	4.0	8	12	162	3	8	26	9.25	
	114.3	---	250	30	200	78	138	4.0	8	12	162	3	8	26	9.06	
125	---	133.0	295	34	240	88	162	4.5	8	12	188	3	8	30	14.53	
	139.7	---	295	34	240	88	168	4.5	8	12	188	3	8	30	14.23	
150	---	159.0	345	36	280	95	192	5.6	10	12	218	3	8	33	21.35	
	168.3	---	345	36	280	95	202	5.6	10	12	218	3	8	33	20.92	
175	193.7	---	375	40	310	105	228	6.3	10	16	260	3	12	33	26.28	
200	219.1	---	415	42	345	110	256	7.1	10	16	285	3	12	36	33.56	
250	---	267.0	470	46	400	125	310	8.8	12	18	345	3	12	36	47.98	
	273.0	---	470	46	400	125	316	8.8	12	18	345	3	12	36	47.32	
300	323.9	---	530	52	460	140	372	11.0	12	18	410	4	16	36	66.44	
350	355.6	---	600	56	525	150	420	12.5	12	20	465	4	16	39	96.23	
	---	368.0	600	56	525	150	420	12.5	12	20	465	4	16	39	91.77	
400	406.4	---	670	60	585	160	475	14.2	12	20	535	4	16	42	127.70	
	---	419.0	670	60	585	160	475	14.2	12	20	535	4	16	42	122.13	

WHILE EVERY EFFORT HAS BEEN MADE, TO ENSURE THAT THE INFORMATION GIVEN ON THIS PAGE IS ACCURATE, LUDA FLANGES DOES NOT ACCEPT RESPONSIBILITY FOR ANY INACCURACIES OR MISINTERPRETATIONS OF THIS DATA.

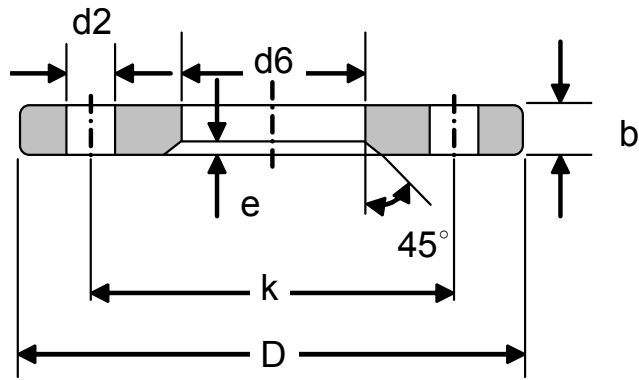


DIN 2637 PN100															
DN	d1		D	b	k	h1	d3	s	r	h2	d4	f	No. of Holes	d2	KG
	ISO	DIN													
10	---	14.0	100	20	70	45	28	1.8	4	6	40	2	4	14	1.07
	17.2	---	100	20	70	45	32	1.8	4	6	40	2	4	14	1.08
15	---	20.0	105	20	75	45	32	2.0	4	6	45	2	4	14	1.19
	21.3	---	105	20	75	45	34	2.0	4	6	45	2	4	14	1.19
25	---	30.0	140	24	100	58	48	2.6	4	8	68	2	4	18	2.61
	33.7	---	140	24	100	58	52	2.6	4	8	68	2	4	18	2.60
40	---	44.5	170	26	125	62	65	2.9	6	10	88	3	4	22	4.00
	48.3	---	170	26	125	62	70	2.9	6	10	88	3	4	22	3.99
50	---	57.0	195	28	145	68	86	3.2	6	10	102	3	4	26	5.72
	60.3	---	195	28	145	68	90	3.2	6	10	102	3	4	26	5.70
65	76.1	---	220	30	170	76	108	3.6	6	12	122	3	8	26	7.43
80	88.9	---	230	32	180	78	120	4.0	8	12	138	3	8	26	8.58
100	---	108.0	265	36	210	90	145	5.0	8	12	162	3	8	30	13.02
	114.3	---	265	36	210	90	150	5.0	8	12	162	3	8	30	12.79
125	---	133.0	315	40	250	105	180	6.3	8	12	188	3	8	33	21.29
	139.7	---	315	40	250	105	180	6.3	8	12	188	3	8	33	20.68
150	---	159.0	355	44	290	115	210	7.1	10	12	218	3	12	33	28.90
	168.3	---	355	44	290	115	210	7.1	10	12	218	3	12	33	27.76
175	193.7	---	385	48	320	127	245	8.8	10	16	260	3	12	33	36.94
200	219.1	---	430	52	360	130	278	10.0	10	16	285	3	12	36	49.35
250	---	267.0	505	60	430	157	340	12.5	12	18	345	3	12	39	81.71
	273.0	---	505	60	430	157	340	12.5	12	18	345	3	12	39	80.09
300	323.9	---	585	68	500	170	400	14.2	12	18	410	4	16	42	116.26
	355.6	---	655	74	560	189	460	16.0	12	20	465	4	16	48	166.09
350	---	368.0	655	74	560	189	460	16.0	12	20	465	4	16	48	160.53

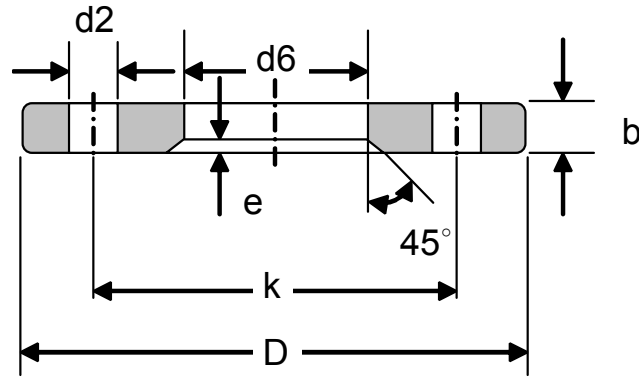
DIN 2638 PN6															
DN	d1		D	b	k	h1	d3	s	r	h2	d4	f	No. of Holes	d2	KG
	ISO	DIN													
10	---	14	100	20	70	45	28	2.0	4	6	40	2	4	14	1.08
	17.2	---	100	20	70	45	32	2.0	4	6	40	2	4	14	1.08
15	---	20	105	20	75	45	32	2.0	4	6	45	2	4	14	1.19
	21.3	---	105	20	75	45	34	2.0	4	6	45	2	4	14	1.19
25	---	30	140	24	100	58	48	2.9	4	8	68	2	4	18	2.62
	33.7	---	140	24	100	58	52	2.9	4	8	68	2	4	18	2.62
40	---	44.5	170	28	125	64	65	3.6	6	10	88	3	4	22	4.36
	48.3	---	170	28	125	64	70	3.6	6	10	88	3	4	22	4.34
50	---	57	195	30	145	75	86	4.0	6	10	102	3	4	26	6.28
	60.3	---	195	30	145	75	90	4.0	6	10	102	3	4	26	6.27
65	76.1	---	220	34	170	82	108	5.0	6	12	122	3	8	26	8.61
80	88.9	---	230	36	180	86	120	6.3	8	12	138	3	8	26	10.09
100	---	108	265	40	210	100	145	8.0	8	12	162	3	8	30	15.28
	114.3	---	265	40	210	100	150	8.0	8	12	162	3	8	30	15.07
125	---	133	315	44	250	115	180	10.0	8	14	188	3	8	33	24.68
	139.7	---	315	44	250	115	180	10.0	8	14	188	3	8	33	24.09
150	---	159	355	50	290	128	210	12.5	10	14	218	3	12	33	35.14
	168.3	---	355	50	290	128	210	12.5	10	14	218	3	12	33	34.02
175	193.7	---	390	54	320	138	245	14.2	10	16	260	3	12	36	44.90
200	219.1	---	430	60	360	140	278	16.0	10	16	285	3	12	36	60.03
250	---	267	515	68	430	155	340	20.0	12	18	345	3	12	42	98.05
	273	---	515	68	430	155	340	20.0	12	18	345	3	12	42	96.52
300	323.9	---	585	78	500	175	400	22.2	12	18	410	4	16	42	138.80



PN6										
DN	d1		D	d6	b	k	e	No. of Holes	d2	KG
	ISO	DIN								
10	---	14.0	75	16	10	50	2	4	11	0.30
	17.2	---	75	19	10	50	2	4	11	0.29
15	---	20.0	80	22	10	55	2	4	11	0.33
	21.3	---	80	24	10	55	2	4	11	0.33
20	---	25.0	90	28	10	65	2	4	11	0.42
	26.9	---	90	30	10	65	2	4	11	0.41
25	---	30.0	100	33	12	75	3	4	11	0.62
	33.7	---	100	36	12	75	3	4	11	0.61
32	---	38.0	120	42	12	90	3	4	14	0.88
	42.4	---	120	46	12	90	3	4	14	0.85
40	---	44.5	130	50	12	100	3	4	14	1.01
	48.3	---	130	54	12	100	3	4	14	0.98
50	---	57.0	140	62	12	110	3	4	14	1.11
	60.3	---	140	65	12	110	3	4	14	1.08
65	76.1	---	160	81	12	130	3	4	14	1.35
80	88.9	---	190	94	14	150	3	4	18	2.24
100	---	108.0	210	113	14	170	3	4	18	2.59
	114.3	---	210	119	14	170	3	4	18	2.47
125	---	133.0	240	138	14	200	3	8	18	3.10
	139.7	---	240	145	14	200	3	8	18	2.93
150	---	159.0	265	164	14	225	3	8	18	3.52
	168.3	---	265	173	14	225	3	8	18	3.25
200	219.1	---	320	225	16	280	3	8	18	4.85
250	---	267.0	375	273	20	335	3	12	18	7.67
	273.0	---	375	279	20	335	3	12	18	7.26
300	323.9	---	440	329	24	395	4	12	22	11.77
350	355.6	---	490	362	26	445	4	12	22	16.55
	---	368.0	490	374	26	445	4	12	22	15.13
400	406.4	---	540	413	28	495	4	16	22	19.56
	---	419.0	540	426	28	495	4	16	22	17.67
500	508.0	---	645	517	32	600	4	20	22	27.43
600	610.0	---	755	618	36	705	4	20	26	38.75
700	711.0	---	860	721	40	810	4	24	26	50.19
800	813.0	---	975	824	44	920	4	24	30	67.83
900	914.0	---	1075	926	48	1020	4	24	30	81.84
1000	1016.0	---	1175	1028	52	1120	4	28	30	95.74
1200	1220.0	---	1405	1232	60	1340	5	32	33	155.87

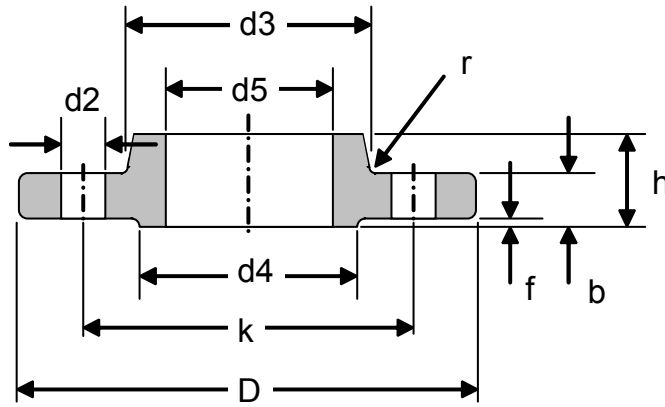


PN10										
DN	d1		D	d6	b	k	e	No. of Holes	d2	KG
	ISO	DIN								
10	---	14.0	90	16	14	60	3	4	14	0.61
	17.2	---	90	19	14	60	3	4	14	0.60
15	---	20.0	95	22	14	65	3	4	14	0.67
	21.3	---	95	24	14	65	3	4	14	0.66
20	---	25.0	105	28	14	75	3	4	14	0.82
	26.9	---	105	30	14	75	3	4	14	0.81
25	---	30.0	115	33	16	85	4	4	14	1.12
	33.7	---	115	36	16	85	4	4	14	1.10
32	---	38.0	140	42	16	100	4	4	18	1.63
	42.4	---	140	46	16	100	4	4	18	1.60
40	---	44.5	150	50	16	110	4	4	18	1.85
	48.3	---	150	54	16	110	4	4	18	1.80
50	---	57.0	165	62	16	125	5	4	18	2.18
	60.3	---	165	65	16	125	5	4	18	2.14
65	76.1	---	185	81	16	145	5	4	18	2.60
80	88.9	---	200	94	18	160	5	8	18	3.17
100	---	108.0	220	113	18	180	5	8	18	3.67
	114.3	---	220	119	18	180	5	8	18	3.51
125	---	133.0	250	138	18	210	5	8	18	4.53
	139.7	---	250	145	18	210	5	8	18	4.32
150	---	159.0	285	164	18	240	5	8	22	5.60
	168.3	---	285	173	18	240	5	8	22	5.26
200	219.1	---	340	225	20	295	5	8	22	7.53
250	---	267.0	395	273	22	350	5	12	22	10.27
	273.0	---	395	279	22	350	5	12	22	9.82
300	323.9	---	445	329	26	400	5	12	22	13.46
350	355.6	---	505	362	28	460	6	16	22	20.07
	---	368.0	505	374	28	460	6	16	22	18.54
400	406.4	---	565	413	32	515	6	16	26	27.19
	---	419.0	565	426	32	515	6	16	26	25.04
500	508.0	---	670	517	38	620	6	20	26	39.38
600	610.0	---	780	618	44	725	7	20	30	56.55
700	711.0	---	895	721	50	840	7	24	30	80.02
800	813.0	---	1015	824	56	950	7	24	33	112.25
900	914.0	---	1115	926	62	1050	7	28	33	135.80
1000	1016.0	---	1230	1026	70	1160	7	28	36	182.96



DIN 2655 PN25											
DN	d1		D	d6	b	k	e	No. of Holes	d2	KG	
	ISO	DIN									
10	---	14.0	90	16	16	60	5	4	14	0.70	
	17.2	---	90	19	16	60	5	4	14	0.69	
15	---	20.0	95	22	16	65	5	4	14	0.77	
	21.3	---	95	24	16	65	5	4	14	0.76	
20	---	25.0	105	28	16	75	5	4	14	0.93	
	26.9	---	105	30	16	75	5	4	14	0.92	
25	---	30.0	115	33	18	85	6	4	14	1.26	
	33.7	---	115	36	18	85	6	4	14	1.24	
32	---	38.0	140	42	18	100	6	4	18	1.84	
	42.4	---	140	46	18	100	6	4	18	1.80	
40	---	44.5	150	50	18	110	6	4	18	2.08	
	48.3	---	150	54	18	110	6	4	18	2.03	
50	---	57.0	165	62	20	125	6	4	18	2.72	
	60.3	---	165	65	20	125	6	4	18	2.68	
65	76.1	---	185	81	20	145	6	8	18	3.09	
80	88.9	---	200	94	22	160	6	8	18	3.88	
100	---	108.0	235	113	22	190	6	8	22	5.23	
	114.3	---	235	119	22	190	6	8	22	5.04	
125	---	133.0	270	138	24	220	6	8	26	7.17	
	139.7	---	270	145	24	220	6	8	26	6.88	
150	---	159.0	300	164	24	250	6	8	26	8.54	
	168.3	---	300	173	24	250	6	8	26	8.09	
200	219.1	---	360	225	26	310	8	12	26	11.36	
250	---	267.0	425	273	30	370	8	12	30	17.63	
	273.0	---	425	279	30	370	8	12	30	17.01	
300	323.9	---	485	329	34	430	8	16	30	23.60	
350	355.6	---	555	362	38	490	8	16	33	37.38	
	---	368.0	555	374	38	490	8	16	33	35.31	
400	406.4	---	620	413	42	550	8	16	36	50.00	
	---	419.0	620	426	42	550	8	16	36	47.18	
500	508.0	---	730	517	50	660	8	20	36	73.89	

DIN 2656 PN40											
DN	d1		D	d6	b	k	e	No. of Holes	d2	KG	
	ISO	DIN									
10	---	14.0	90	16	16	60	5	4	14	0.70	
	17.2	---	90	19	16	60	5	4	14	0.69	
15	---	20.0	95	22	16	65	5	4	14	0.77	
	21.3	---	95	24	16	65	5	4	14	0.76	
20	---	25.0	105	28	16	75	5	4	14	0.93	
	26.9	---	105	30	16	75	5	4	14	0.92	
25	---	30.0	115	33	18	85	6	4	14	1.26	
	33.7	---	115	36	18	85	6	4	14	1.24	
32	---	38.0	140	42	18	100	6	4	18	1.84	
	42.4	---	140	46	18	100	6	4	18	1.80	
40	---	44.5	150	50	18	110	6	4	18	2.08	
	48.3	---	150	54	18	110	6	4	18	2.03	
50	---	57.0	165	62	20	125	6	4	18	2.72	
	60.3	---	165	65	20	125	6	4	18	2.68	
65	76.1	---	185	81	20	145	6	8	18	3.09	
80	88.9	---	200	94	22	160	6	8	18	3.88	
100	---	108.0	235	113	22	190	6	8	22	5.23	
	114.3	---	235	119	22	190	6	8	22	5.04	
125	---	133.0	270	138	24	220	6	8	26	7.17	
	139.7	---	270	145	24	220	6	8	26	6.88	
150	---	159.0	300	164	24	250	6	8	26	8.54	
	168.3	---	300	173	24	250	6	8	26	8.09	
200	219.1	---	375	225	30	320	8	12	30	14.65	
	---	267.0	450	273	36	385	8	12	33	25.50	
250	273.0	---	450	279	36	385	8	12	33	24.77	
	---	---	---	---	---	---	---	---	---	---	
300	323.9	---	515	329	40	450	8	16	33	34.42	
	355.6	---	580	362	46	510	8	16	36	52.36	
350	---	368.0	580	374	46	510	8	16	36	49.85	
	406.4	---	660	413	50	585	8	16	39	74.20	
400	---	419.0	660	426	50	585	8	16	39	70.84	



DIN86029 PN10

DN	d1	D	d5	b	k	h	d3	r	d4	f	No. of Holes	d2	KG
10	17.2	90	17.7	14	60	20	30	4	40	2	4	14	0.56
15	21.3	95	22.0	14	65	20	35	4	45	2	4	14	0.62
20	26.9	105	27.6	16	75	24	45	4	58	2	4	14	0.91
25	33.7	115	34.4	16	85	24	52	5	68	2	4	14	1.09
32	42.4	140	43.1	16	100	26	60	5	78	2	4	18	1.58
40	48.3	150	49.0	16	110	26	70	5	88	3	4	18	1.76
50	60.3	165	61.1	18	125	28	85	5	102	3	4	18	2.39
65	76.1	185	77.1	18	145	32	105	5	122	3	4	18	3.10
80	88.9	200	90.3	20	160	34	118	5	138	3	8	18	3.77
100	114.3	220	115.9	20	180	38	140	5	158	3	8	18	4.29
125	139.7	250	141.6	22	210	40	168	5	188	3	8	18	5.86
150	168.3	285	170.5	22	240	44	196	5	212	3	8	22	7.22
175	193.7	315	196.1	24	270	44	224	6	242	3	8	22	9.18
200	219.1	340	222.0	24	295	44	247	6	268	3	8	22	9.95
250	273.0	395	276.0	26	350	46	300	6	320	3	12	22	12.69
300	323.9	445	327.0	26	400	46	352	6	370	4	12	22	14.40
350	355.6	505	359.0	26	460	53	398	10	430	4	16	22	22.36
400	406.4	565	410.0	26	515	57	448	10	482	4	16	26	26.85
450	457.0	615	461.0	28	565	62	502	10	532	4	20	26	32.53
500	508.0	670	512.0	28	620	67	552	10	585	4	20	26	37.84
600	610.0	780	614.0	28	725	75	658	10	685	5	20	30	49.32
700	711.0	895	716.0	30	840	77	760	10	800	5	24	30	63.86
800	813.0	1015	818.0	32	950	84	864	10	905	5	24	33	85.19
900	914.0	1115	920.0	34	1050	88	969	10	1005	5	28	33	101.36
1000	1016.0	1230	1022.0	34	1160	92	1071	10	1110	5	28	36	119.72

DIN86030 PN16

DN	d1	D	d5	b	k	h	d3	r	d4	f	No. of Holes	d2	KG
10	17.2	90	17.7	14	60	20	30	4	40	2	4	14	0.56
15	21.3	95	22.0	14	65	20	35	4	45	2	4	14	0.62
20	26.9	105	27.6	16	75	24	45	4	58	2	4	14	0.91
25	33.7	115	34.4	16	85	24	52	5	68	2	4	14	1.09
32	42.4	140	43.1	16	100	26	60	5	78	2	4	18	1.58
40	48.3	150	49.0	16	110	26	70	5	88	3	4	18	1.76
50	60.3	165	61.1	18	125	28	85	5	102	3	4	18	2.39
65	76.1	185	77.1	18	145	32	105	5	122	3	4	18	3.10
80	88.9	200	90.3	20	160	34	118	5	138	3	8	18	3.77
100	114.3	220	115.9	20	180	38	140	5	158	3	8	18	4.29
125	139.7	250	141.6	22	210	40	168	5	188	3	8	18	5.86
150	168.3	285	170.5	22	240	44	196	5	212	3	8	22	7.22
175	193.7	315	196.1	24	270	44	224	6	242	3	8	22	9.18
200	219.1	340	222.0	24	295	44	247	6	268	3	12	22	9.70
250	273.0	405	276.0	26	355	46	300	6	320	3	12	26	13.50
300	323.9	460	327.0	28	410	46	355	6	378	4	12	26	17.29
350	355.6	520	359.0	30	470	57	400	10	438	4	16	26	27.68
400	406.4	580	410.0	32	525	63	457	10	490	4	16	30	36.13
450	457.0	640	461.0	34	585	68	505	10	550	4	20	30	44.25
500	508.0	715	512.0	34	650	73	559	10	610	4	20	33	56.86
600	610.0	840	614.0	36	770	83	664	10	725	5	20	36	80.95
700	711.0	910	716.0	36	840	83	760	10	795	5	24	36	76.84
800	813.0	1025	818.0	38	950	90	864	10	900	5	24	39	99.34
900	914.0	1125	920.0	40	1050	94	969	10	1000	5	28	39	116.83
1000	1016.0	1255	1022.0	42	1170	100	1073	10	1115	5	28	42	154.09



沧州皓圆管件制造有限公司

CANGZHOU HAOYUAN PIPEFITTING MFG CO.,LTD

地址 (ADD):Yanshan County, Cangzhou, Hebei, China

电话 (TEL) :+86-317-3025890

手机(TEL):+8618931723678 +8615131738057

传真 (FAX) :+86-3173200713

网址: www.haoyuan-pipefittings.com

www.pipefitting-china.com

E-mail:hbggy@haoyuan-pipefittings.com:yin@hbggy-pipe.com



沧州固圆管业有限公司

CANGZHOU GUYUAN STEEL PIPE CO.,LTD

地址 (ADD) :Yanshan County, Cangzhou, Hebei, China

电话 (TEL) :+86-317-5305880

手机(TEL):+8618931723678 +8615131738057

传真 (FAX) :+86-3173200713

网址: www.hbggy-pipe.com

E-mail:hbggy@hbggy-pipe.com:yin@hbggy-pipe.com