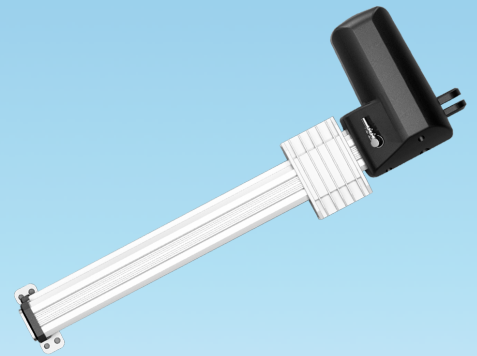


U5

U5 is a linear actuator with slide design for electric electric massage chair, old-man chair, electric bed, etc.

SPECIFICATION

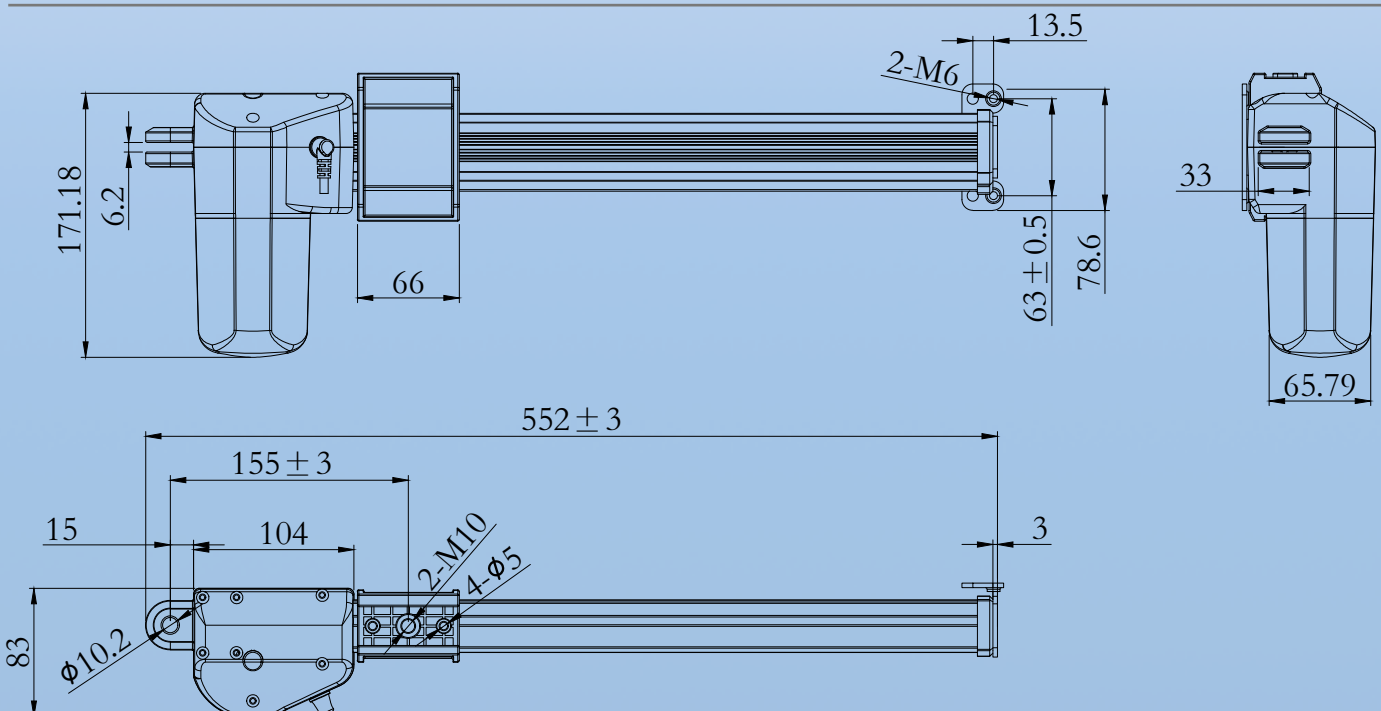
- **Voltage:** 12/24 VDC
- **Max. Load:** 6,000N (push); 3,000N (pull)
- **No-Load Speed:** 5.4 ~ 58mm/s
- **Full-Load Speed:** 2.9 ~ 25mm/s
- **Noise level:** ≤52dB
- **Duty Cycle:** 10%



PARAMETERS (Note: the current @ 12V is as roughly 2 times as that@ 24V)

CODE	RATED LOAD (N)		RATED CURRENT (A)	RATED SPEED (mm/s)	
	PUSH	PULL		NO LOAD(32VDC)	FULL LOAD (24VDC)
Standard Motor (2600RPM)					
A	6000	3000	5	5.4	2.9
B	5000	3000	5	7.1	3.65
C	3000	3000	4.5	11	4.6
D	2500	2500	4	15.8	7.5
E	2000	2000	5	22.5	11
F	1200	1200	4	33	15
G	750	750	4.5	44.5	20
Fast Motor(3400RPM)					
I	6000	3000	5	7	3.9
J	5000	3000	5	9.2	4.0
K	3000	3000	4.8	14.6	8.0
L	2500	2500	4.5	21	10.5
M	2000	2000	4.5	29.2	14
N	1200	1200	5	43.5	20
O	750	750	4.5	58	25

DIMENSION



U5

<input type="checkbox"/> Voltage	1= 12V	2=24V(Standard)
<input type="checkbox"/> Code of Parameters		
<input type="checkbox"/> <input type="checkbox"/> <input type="checkbox"/> Stroke (please fill in number)		
<input type="checkbox"/> <input type="checkbox"/> <input type="checkbox"/> Installation Dimension (please fill in number)		
<input type="checkbox"/> Front-End	1= None 2= L type dead plate	C= Customization
<input type="checkbox"/> Rear-End	1= Plastic clevis, slot 6.2mm, Φ 10.2mm 2= Without rear end	3= Fixed base C= Customization
<input type="checkbox"/> Limit Switch	1= Both end for cutting off current(Standard) 2= Both end for cutting off current and a third one for signal output 3= Both end for signal output 4= Both end and a third one for signal output C= Customization	
<input type="checkbox"/> Feedback	1= None(Standard)	2= Dual Hall sensor
<input type="checkbox"/> Connector	1= Tined leads 2= 01pin(Standard, 0.5m) 3=Y cable, male 01pin, female Din 5pin(0.5m)	4=V cable, male 01pin, female Din 5pin(0.5m) C=Customization
<input type="checkbox"/> Cable	1= From gear box(Standard)	2= From front end
<input type="checkbox"/> Length of Cable	1= 0.5m 2= 1m 3= 1.5m 4= 2m	5= 3m 6= 0.1m 7= 0.2m C= Customization
<input type="checkbox"/> Brake	1= None 2= One three-cycle torsional spring	3= One four-and-a-half-cycle torsional spring 4= Motor brake