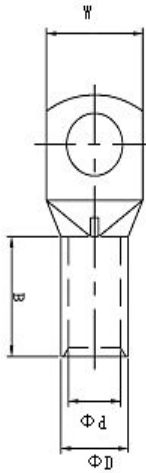
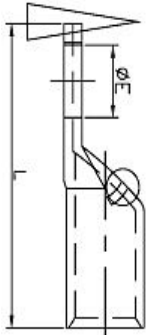


**JM COPPER TUBE TERMINALS JM铜管端子**



PART NO 2015-2018	ITEM NO	DIMENSIONS					
		ΦE	ΦD	Φd	W	B	L
LY0006-0001	JM2.5-4	4.2	3.90	2.6	8.7	7.0	20.0
LY0006-0002	JM2.5-6	6.5	3.90	2.6	10.0	7.0	20.0
LY0006-0003	JM4-4	4.2	4.40	3.2	10.0	8.0	22.0
LY0006-0004	JM4-5	5.2	4.40	3.2	10.0	8.0	22.0
LY0006-0005	JM4-6	6.5	4.40	3.2	10.0	8.0	22.0
LY0006-0006	JM6-5	5.2	5.20	3.7	10.0	10.0	24.0
LY0006-0007	JM6-6	6.5	5.20	3.7	12.0	10.0	24.0
LY0006-0008	JM6-8	8.4	5.20	3.7	12.5	10.0	24.0
LY0006-0009	JM10-5	5.2	6.20	3.7	12.0	10.0	27.0
LY0006-0010	JM10-6	6.5	6.20	4.5	12.0	10.0	27.0
LY0006-0011	JM10-8	8.4	6.20	4.5	12.5	10.0	27.0
LY0006-0012	JM10-10	10.3	6.20	4.5	15.0	10.0	29.0
LY0006-0013	JM16-6	6.5	7.34	5.7	12.0	12.0	30.0
LY0006-0014	JM16-8	8.4	7.34	5.7	12.5	12.0	30.0
LY0006-0015	JM16-10	10.5	7.34	5.7	16.0	12.0	32.0
LY0006-0016	JM16-12	13.0	7.34	5.7	17.0	12.0	32.0
LY0006-0017	JM25-6	6.5	8.84	7.2	13.0	15.0	34.0
LY0006-0018	JM25-8	8.4	8.84	7.2	15.0	15.0	34.0
LY0006-0019	JM25-10	10.5	8.84	7.2	16.0	15.0	34.0
LY0006-0020	JM25-12	13.0	8.84	7.2	18.0	15.0	36.0
LY0006-0021	JM35-6	6.5	10.60	8.5	16.0	16.0	38.0
LY0006-0022	JM35-8	8.4	10.60	8.5	16.0	16.0	38.0
LY0006-0023	JM35-10	10.5	10.60	8.5	16.0	16.0	38.0
LY0006-0024	JM35-12	13.0	10.60	8.5	18.0	15.0	38.0
LY0006-0025	JM50-6	6.5	12.25	9.8	18.0	19.0	44.0
LY0006-0026	JM50-8	8.4	12.25	9.8	18.0	19.0	44.0
LY0006-0027	JM50-10	10.5	12.25	9.8	18.0	19.0	44.0
LY0006-0028	JM50-12	13.0	12.25	9.8	20.0	19.0	44.0
LY0006-0029	JM70-8	8.4	14.20	11.5	21.0	22.0	50.0
LY0006-0030	JM70-10	10.5	14.20	11.5	21.0	22.0	50.0
LY0006-0031	JM70-12	13.0	14.20	11.5	21.0	22.0	50.0
LY0006-0032	JM70-14	14.5	14.20	11.5	21.0	22.0	50.0
LY0006-0033	JM95-10	10.5	16.70	13.7	25.0	25.0	57.0
LY0006-0034	JM95-12	13.0	16.70	13.7	25.0	25.0	57.0
LY0006-0035	JM95-14	14.5	16.70	13.7	25.0	25.0	57.0
LY0006-0036	JM120-10	10.5	18.60	15.0	27.0	26.0	63.5
LY0006-0037	JM120-12	13.0	18.60	15.0	27.0	26.0	63.5
LY0006-0038	JM120-14	14.7	18.60	15.0	27.0	26.0	63.5
LY0006-0039	JM120-16	17.0	18.60	15.0	27.0	26.0	63.5
LY0006-0040	JM150-10	10.5	20.60	16.7	30.0	30.0	71.0
LY0006-0041	JM150-12	13.0	20.60	16.7	30.0	30.0	71.0
LY0006-0042	JM150-14	14.7	20.60	16.7	30.0	30.0	71.0
LY0006-0043	JM150-16	17.0	20.60	16.7	30.0	30.0	71.0
LY0006-0044	JM185-12	13.0	22.60	18.5	34.0	32.0	79.0
LY0006-0045	JM185-14	14.7	22.60	18.5	34.0	32.0	79.0
LY0006-0046	JM185-16	17.0	22.60	18.5	34.0	32.0	79.0
LY0006-0047	JM240-12	13.0	25.55	21.0	38.0	40.0	92.0
LY0006-0048	JM240-14	14.7	25.55	21.0	38.0	40.0	92.0
LY0006-0049	JM240-16	17.0	25.55	21.0	38.0	40.0	92.0
LY0006-0050	JM240-20	21.0	25.55	21.0	38.0	40.0	92.0
LY0006-0051	JM300-12	13.0	29.45	24.0	43.0	44.0	102.0
LY0006-0052	JM300-14	14.7	29.45	24.0	43.0	44.0	102.0
LY0006-0053	JM300-16	17.0	29.45	24.0	43.0	44.0	102.0
LY0006-0054	JM300-20	21.0	29.45	24.0	43.0	44.0	102.0
LY0006-0055	JM400-12	13.0	33.35	27.0	48.5	50.0	113.0
LY0006-0056	JM400-14	14.7	33.35	27.0	48.5	50.0	113.0
LY0006-0057	JM400-16	17.0	33.35	27.0	48.5	50.0	113.0
LY0006-0058	JM400-20	21.0	33.35	27.0	48.5	50.0	113.0
LY0006-0059	JM500-14	14.7	37.30	30.0	55.0	50.0	123.0
LY0006-0060	JM500-16	17.0	37.30	30.0	55.0	50.0	123.0
LY0006-0061	JM500-20	21.0	37.30	30.0	55.0	50.0	123.0
LY0006-0062	JM630-16	17.0	44.10	35.0	65.0	65.0	135.0
LY0006-0063	JM630-18	19.0	44.10	35.0	65.0	65.0	135.0
LY0006-0064	JM630-20	21.0	44.10	35.0	65.0	65.0	135.0