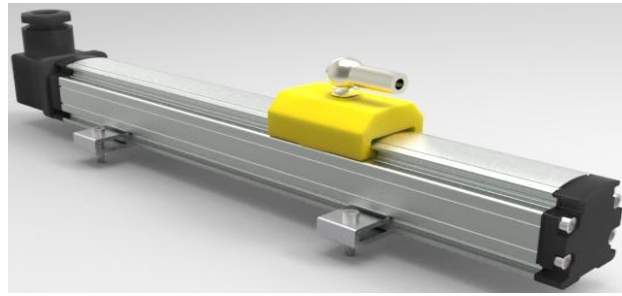




## KYDM-LF&LR Series Magnetostrictive Linear Displacement Sensors

### Description

KYDM-LF&LR series Magnetostrictive Linear Displacement Sensor (short for KYDM-LF) is a contactless linear position sensor providing high accurate absolute position measurement of displacements. Contactless sensing with highest durability, the extremely robust sensor, ideal for continuous operation under harshest industrial



conditions is completely modular in mechanic and electronic design. Absolute output, no periodic re-calibration and maintenance, no need to re-zero. KYDM series of Magnetostrictive Linear-Displacement Sensor can support variety of signal outputs as voltage, current, pulse, SSI, ModBus, Profibus bus, and supports single sensor measuring two coaxial position. Magnetostrictive linear displacement sensor can completely replace electronic device or encoder used in injection molding machines moving parts, injection, ejection precise positioning.

### Applications

- Injection molding machine
- Ceramic press machine
- Extrusion machine
- Hydraulic press



### Features

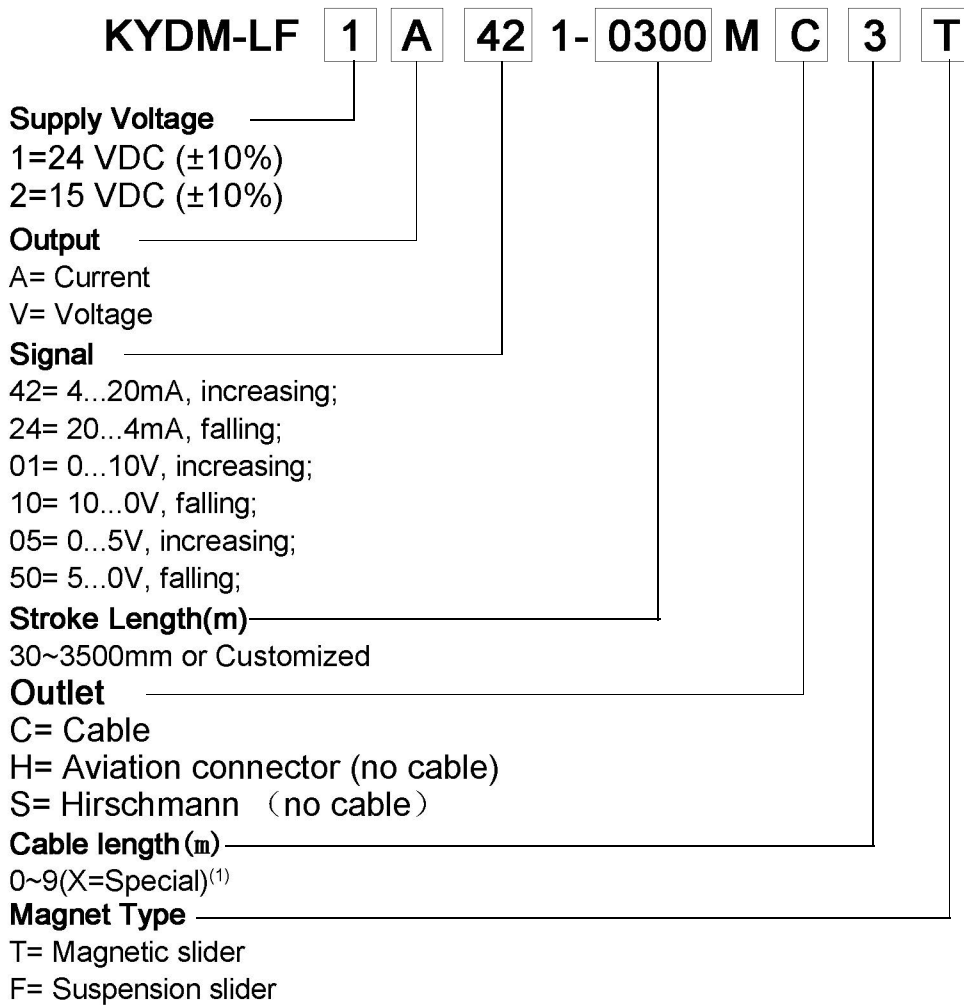
- Contactless Sensing with Highest Durability;
- Double encapsulation ensures high operating safety and optimum EMC protection;
- Absolute output, no periodic re-calibration and maintenance, no need to re-zero;
- Easy installation, no maintenance.

### Specifications

Measuring range	80~3000mm
Operating voltage	+24VDC ±10%
Outputs	0~5VDC 0~10VDC 4~20mADC SSI
Non-linearity	< ±0.05% F.S. or 100um max.
Repeatability	< ±0.002% F.S.
Resolution	16bitD/A , 1um
Temperature coefficient	< ±0.007%F.S./°C
Load characteristics	Current output: Load Resistance 500Ω(Max.)
	Voltage output: Load current 2mA(Max.)
Operating temperature	-40~+85 °C
Storage temperature	-40~+100 °C
Sealing	IP65

Note: The F.S. is short for Full Scale.

## How To Order



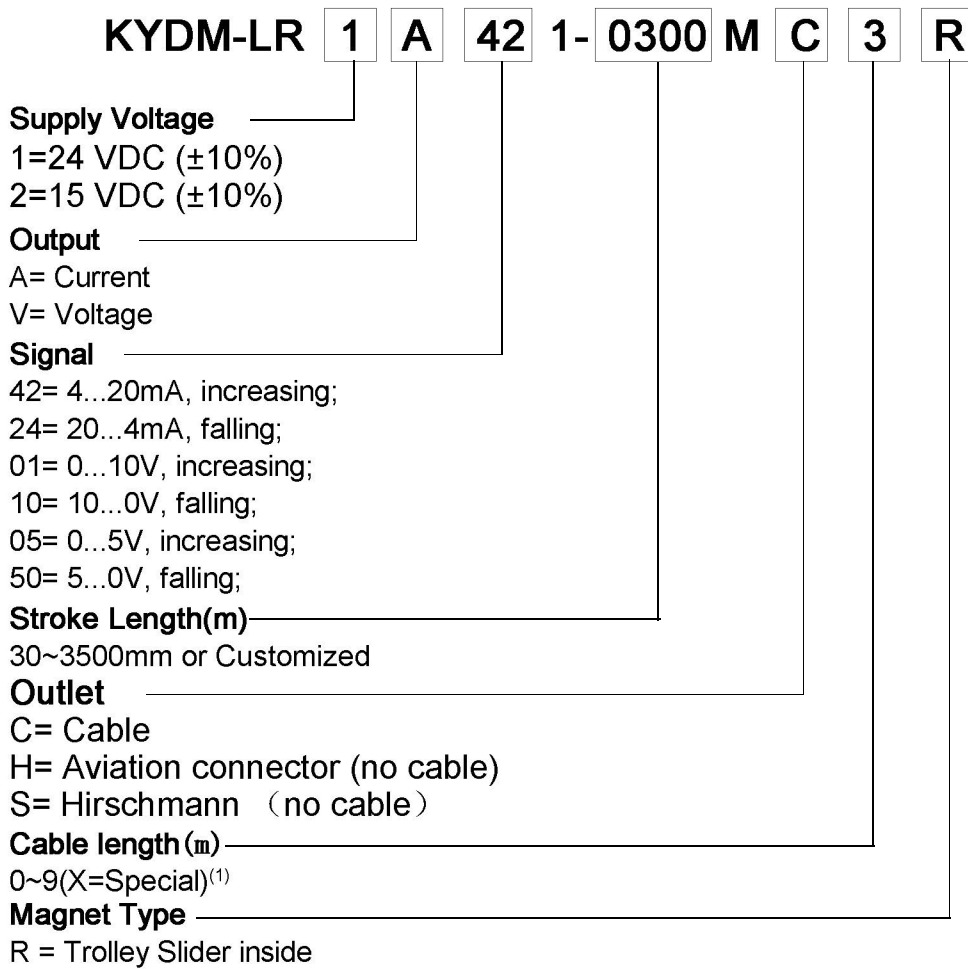
(1) Cable $\geq$ 10m

KYDM-LF1A4210-0300MC3T

Input:24VDC; Output:4~20mA; 1 Magnet; Forward-acting measurement;

Range:300mm; 3m cable; Magnetic slider

## How To Order



(1) Cable $\geq$ 10m

KYDM-LR1A4210-0300MC3R

Input:24VDC; Output:4~20mA; Forward-acting measurement;

Range:300mm; 3m cable; Trolley Slider inside

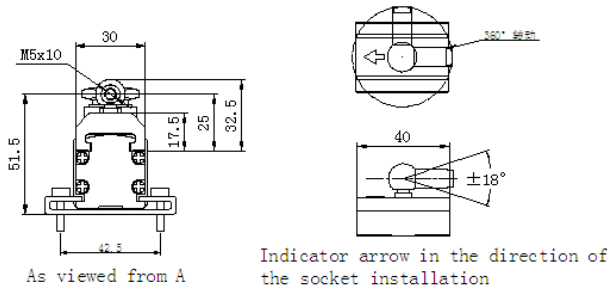
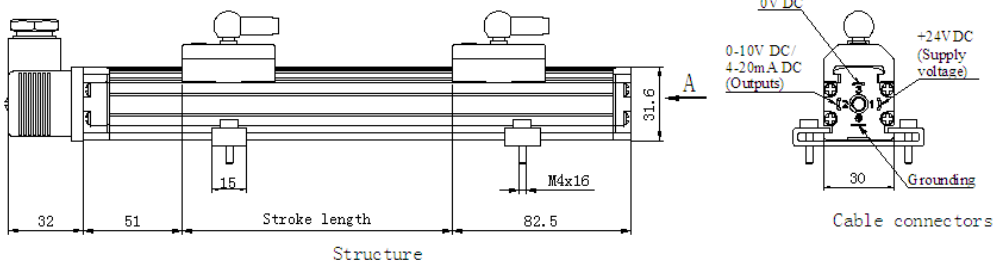


### Application Overview:

KYDM series Magnetostrictive Linear-Displacement Sensor using non-contact magnetostrictive principle, with durability, and can be used in the injection molding machine mold, injection, transfer seat, the top of the displacement stroke detection.

### Product Diagram:

## KYDM-LF



Accessory		
NO.	Name	Count
1	Hirschmann connectors	1
2	M4x16 Socket head cap screw	4
3	Mounting foot	2

## KYDM-LR

