



Managed 10G Ethernet Switch

NT-50MG48T4XGF series

Overview

NT-50MG48T4XGF provides 48 10/100/1000M Ethernet ports, and 4 uplink 10G SFP+ ports, with multilayer exchange capacity and wire speed forwarding capability. Users can set up the functions of the switch through Web, CLI, TELNET, SNMP and many other ways. Support IP, MAC, VLAN, port, user identification element dynamic or static binding; support port isolation, to prevent communication between 2 neighbor network equipment the same broadcast domain, reduce network risk; support the perfect storm control function, can restrain the broadcast, multicast and unicast storm; provide more updates therefore, greatly enhance the QoS, can better meet the quality of service, network security, link protection and other aspects of demand. It is very suitable for converged applications of large networks and core applications of small and medium networks.

Features

- ✧ Built-in efficient switching core to implement flow control and reduce broadcast packets
- ✧ Standard Compliance: IEEE802.3 ad, link aggregation protocol
 - IEEE 802.3, 10BASE-T Ethernet
 - IEEE 802.3u, fast Ethernet standard
 - IEEE, 802.3ab, Gigabit Ethernet standard
 - IEEE, 802.3z, Gigabit Ethernet optical fiber standard
 - IEEE, 802.3ae, 10G Ethernet standard
 - IEEE, 802.3x, full duplex Ethernet data link layer flow control
 - IEEE, 802.3az, EEE energy-efficient Ethernet standards
 - IEEE, 802.1AB, LLDP protocol
 - IEEE, 802.1D, STP protocol
 - IEEE, 802.1Q, VLAN standards
- ✧ Store-and-forward mechanism is employed to avoid packet loss and error frames
- ✧ 10/100/1000Mbps auto-negotiation and auto MDI/MDI-X, compatible with various Ethernet devices
- ✧ Support L2+ Switching features including 802.1Q VLAN, Mirroring, Port isolation, IGMP Snooping, DHCP Snooping, LLDP, POE+ management, IP Source Guard, ARP inspection, ACLs etc.
- ✧ Support spanning tree STP (802.1D) and RSTP (802.1W).
- ✧ G.8032, support <50ms industrial quick ring protection
- ✧ Jumbo frames support a maximum of 12.2 kilobytes
- ✧ Support cable diagnosis
- ✧ Support enhanced management through WEB, CLI, TELNET, SSH, SNMP.
- ✧ 0 °C To 55 °C operating temperature to meet a variety of complex environments
- ✧ Copper ports support ESD protection



Managed 10G Ethernet Switch

NT-50MG48T4XGF series

❖ Hardware Specification

Parameter	Specification
Access mode	48X10/100/1000Mbps, 4X10G SFP+
Standard	IEEE802.3 ad: link aggregation protocol, IEEE 802.3,10BASE-T Ethernet IEEE 802.3u, fast Ethernet standard, IEEE, 802.3ab, Gigabit Ethernet standard IEEE, 802.3z, Gigabit Ethernet optical fiber standard IEEE, 802.3ae 10G Ethernet standard IEEE, 802.3x, full duplex Ethernet data link layer flow control IEEE, 802.3az, EEE energy-efficient Ethernet standards IEEE, 802.1AB-2005, LLDP protocol, IEEE, 802.1D, STP protocol IEEE, 802.1Q, VLAN standards IEEE 802.1D STP, IEEE 802.1w RSTP
10/100/1000 Base-T ports	48 ports
10GBASE-X ports	4 ports 10G SFP+
Conversion means	Store and Forward
System switching bandwidth	176Gbps
Packet forwarding rate	130.944Mpps
Packet buffer	4M bit
Maximum Frame Size	12.2 kilobytes
G.8032 ERPS	<50ms ring protection for industrial high reliable application
Address table	32KB
VLAN	Support up to 4K VLANs simultaneously (out of 4096 VLAN IDs) Port-based VLAN 802.1Q tag-based VLAN
Aggregation	Link Aggregation Control Protocol (LACP) IEEE 802.3ad Up to 26 groups Up to 8 ports per group
MTBF	50,000 hours
LED indicator	Power : PWR (1~48)UTP Port: SPD, L/A, SFP+:
Power supply	Power Input Range: 100~240V AC
Power Requirement	100~240V AC, 50/60Hz, 1.5A
Power Capacity	78W
Operating temperature	0 °C ~+55°C
Operating humidity	5%~90% non-condensing
Storage Temperature	-40~+80°C
Storage humidity	5%~90% non-condensing
Dimensions	440 x 280 x 44.5 (mm)
Weight	3kg



Managed 10G Ethernet Switch

NT-50MG48T4XGF series

❖ Layer 2 Function

Parameter	Specifications
Port Configuration	Port disable / enable Auto-negotiation 10/100/1000Mbps full and half duplex mode selection Flow Control disable / enable
Port Status	Display each port's speed duplex mode, link status, flow control status, auto negotiation status and trunk status
Port Mirroring	TX / RX / Both Many-to-1 monitor
Port Security	Locks MAC Addresses to ports, and limits the number of learned MAC addresses
ACLs	Support for up to 256 entries Drop or rate limitation based on source and destination MAC, VLAN ID or IP address, protocol, port, differentiated services code point (DSCP) / IP precedence, TCP/ UDP source and destination ports, 802.1p priority, Ethernet type, Internet Control Message Protocol (ICMP) packets, IGMP packets, TCP flag
Link Aggregation	1 group of 2-Port 10/100/1000Base-T trunk supported
QoS	Allow to assign low / high priority on each port First-In-First-Out, All-High-before-Low, Weight-Round-Robin QoS policy
IGMP (v1/v2) Snooping	IGMP limits bandwidth-intensive multicast traffic to only the requesters; supports 1024 multicast groups (source-specific multicasting is also supported)
Security Control	MAC address binding TCP & UDP filter

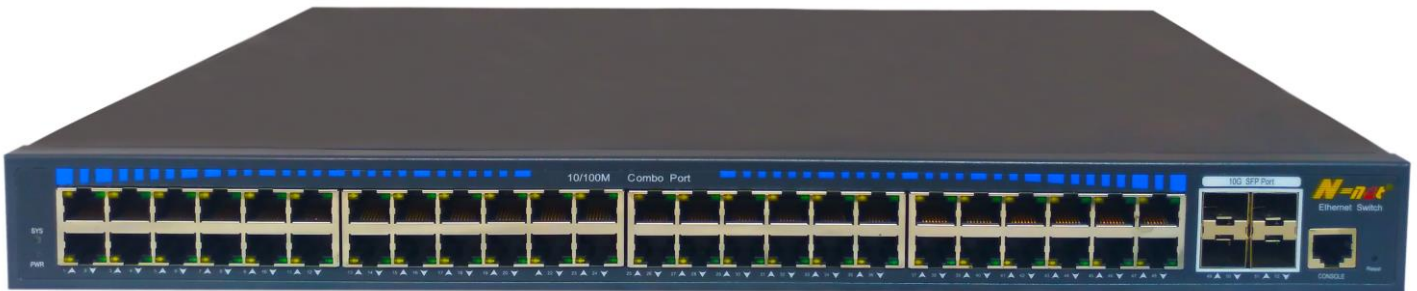
❖ Management Functions

Parameter	Specifications
Basic Management Interfaces	Web Browser, SNMP v1



Managed 10G Ethernet Switch

NT-50MG48T4XGF series



Instruction:

1. Front board have 53 ports, Provide 48x 10/100/1000Mbps downlink Ethernet Ports, 4x 10G uplink SFP+ Ports, and 1x console ports.
2. LED Indicator State:
 - PWR: 1 Green light indicates that the power normal work;
 - SFP+: 4x blue lights indicate that the SFP+ ports is enable
 - SYS: 1 Green lights indicate system status.
 - Ethernet: 48 yellow lights indicate 10/100M Ethernet link and speed;
 - Ethernet: 48 Green lights indicate 10/100M/1000M Ethernet link and speed;

Installation step

Please check below device and accessories before installation, if there are missing, please contact with your supplier.

1. 10G Ethernet Switch 1PCS
2. User Manual 1PCS

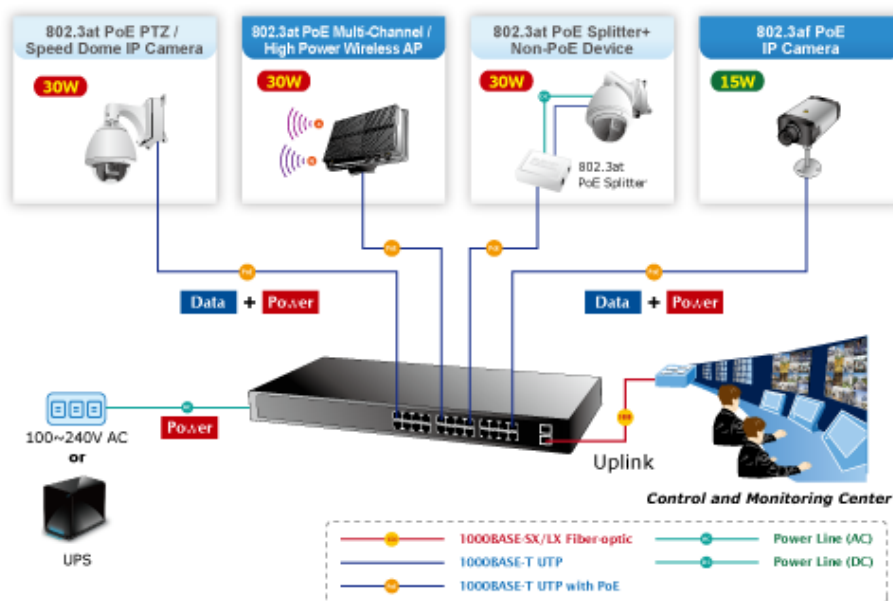
- ◆ Please turn off the signal source and the device's power before installing, installation with power on may damage the device;
- ◆ Use 48 network cables to connect 48 IP cameras with Ethernet switch's 1~48 port;
- ◆ Use network cable to connect Ethernet switch's UPLINK port with NVR or Other Device;
- ◆ Check if the installation is correct and device is good, make sure all the connection is reliable and power for the system;
- ◆ Connect the power outlet and the switch with the power cord.
- ◆ Make sure every network device has power supply and work normally.



Managed 10G Ethernet Switch

NT-50MG48T4XGF series

Application



Order information

Model	Description
NT-50MG48T4XGF	Managed 10G Ethernet Switch, (48) 10/100/1000Mbps downlink Ethernet Ports, (4) 10G uplink SFP+ Ports.