



Gigabit Managed Switch NT-MG2800SFP series

## 8-Port 10/100/1000Mbps with 2 SFP Web Smart Gigabit Switch



### Cost-effective Desktop Size / High-Speed / Fiber Capability WEB Smart Switch

The NT-MG2800 is an 8-Port 10/100/1000Mbps Web Smart Gigabit Ethernet Switch, utilizing a compact form factor which can be mounted in a 10/19-inch rack with optional rack-mounting kits, or placed on desktop. Compared with previous version, the enhanced software features as below:

- ✧ 802.1Q VLAN
- ✧ 802.1X Authentication / RADIUS
- ✧ Rapid Spanning Tree
- ✧ IGMP Snooping
- ✧ SNMP monitor and SNMP Trap

### High Gigabit Performance / Wire-Speed Switching

With 20Gbps non-blocking switch fabric, 8k MAC Address table and 802.3x Full-Duplex flow control, the NT-MG2800 offers wire-speed packet transfer performance without risk of packet loss. The two Gigabit SFP (Small Factor Pluggable) slots can be installed with 1000Base-SX/LX mini-GBIC modules which offer incredible extensibility, flexibility and connectivity to the Core switches or Servers.

### Friendly / Simple Web Management Interface

For efficient management, with its built-in Web-based management, the NT-MG2800 offers an easy-to-use and configuration facility. Via the WEB interface, the NT-MG2800 can be programmed for basic Switch management functions such as per port speed duplex settings, Port Trunking, VLAN, Port Mirroring, Rapid Spanning Tree, 802.1X network security authentication and Misc Configuration. Additionally, the firmware includes advanced features such as IGMP snooping, QoS (Quality of Service), broadcast storm and bandwidth control, to enhance bandwidth utilization

N-Net Technology Co., Ltd

Address: 5-6 floor, C Building, Yiyuantong Industrial Zone, Xuexiang Community, Bantian, Longgang District, Shenzhen, 518129, China  
Tel: +86-755-8387 4688 Fax: +86-755-83420578 E-mail: [sales@n-net.com.cn](mailto:sales@n-net.com.cn) Web: <http://www.n-net.com.cn>





## Gigabit Managed Switch NT-MG2800SFP series

### Remote and Centralize Management installation

Affording the current network to grow and expand, the NT-MG2800 supports standard Simple Network Management Protocol (SNMP) and can be monitored via any standard-based management software. These features provide a cost-effective way to manage the device from the Internet whenever you are working or at home.

### Easy Cabling installation

All eight RJ-45 copper interfaces support 10/100/1000Mbps auto-negotiation for optimal speed detection through RJ-45 Category 6, 5 or 5e cables. The MDI/MDI-X auto-detection supports wired connection to any Ethernet device without requiring cross-over cables. Auto-negotiation for optimal speed detection through RJ-45 Category 6, 5 or 5e cables. The MDI/MDI-X auto detection supports wired connection to any Ethernet device without requiring cross-over cables.

## Key Feature

### Generic Features

- ✧ Comply with IEEE 802.3 10Base-T, IEEE 802.3u 100Base-TX, IEEE 802.3ab 1000Base-T, IEEE802.3z 1000Base-SX/LX Ethernet standard
- ✧ Auto-MDI/MDI-X detection on each RJ-45 port
- ✧ Prevents packet loss with back pressure (half-duplex) and 802.3x PAUSE frame flow control (Full-duplex)
- ✧ 8K MAC address table, automatic source address learning and ageing
- ✧ 20Gbps switch fabric, non-blocking switch architecture
- ✧ 9.6K Jumbo Frame support at all speed (10/100/1000 Mbps)

### Layer 2 Switching

- ✧ Support port-based and 802.1q VLAN function, up to 4096 VLAN groups
- ✧ 802.1w Rapid-Spanning Tree protocol support
- ✧ Link Aggregation support static mode and LACP (802.3ad) - up to 5 Trunk groups, each trunk for up to maximum 10 ports
- ✧ IGMP Snooping – multicast filtering



## Gigabit Managed Switch NT-MG2800SFP series

### Quality of Service

- ✧ 8 QoS classes per port
- ✧ Traffic class assignment based on 802.1p tag, or DSCP field
- ✧ Multicast and Broadcast Storm Control as well as Flooding Control

### Security

- ✧ Port Mirroring support for dedicated port monitoring
- ✧ 802.1X Port-Base access control, RADIUS Server Authentication
- ✧ Static MAC Address assigns destination MAC address at specific port

### Management

- ✧ Remote Web management interface
- ✧ Firmware upgrade through Web interface
- ✧ Cable Diagnostics technology
- ✧ Support SNMPv1 with RFC-1213/1573-Interface group, Ethernet MIB
- ✧ SNMP Trap

## Specification

| Hardware Specification    |  |
|---------------------------|--|
| Copper ports              | 8-Port 10/100/1000Base-T Auto MDI/MDI-X                                |
| SFP Slots                 | 2 1000Base-SX/LX   |
| Switch architecture       | Store-and-Forward  |
| Switch backbone bandwidth | 20Gbps   |
| Switch throughput         | 14.9Mpps   |
| MAC Address Table         | 8K entries   |
| Data Buffer               | 256KB On-chip frame buffer   |
| Flow Control              | Back pressure for half duplex, IEEE 802.3x Pause Frame for full duplex |
| Dimension                 | 217 x 135 x 44(W * D * H) Unit: mm                                     |
| Power Requirement         | 100-240V AC, 50-60 Hz  |
| Power Consumption         | 10 Watts maximum   |
| Layer 2 Functions         |  |



## Gigabit Managed Switch NT-MG2800SFP series

| Layer 2 Functions     |  |
|-----------------------|--|
| Management Interface  | Web Browser, SNMPv1, v2c monitor and SNMP Trap   |
| Port configuration    | <ul style="list-style-type: none"> <li>– Port disable/enable. Auto-negotiation 10/100/1000Mbps full and half duplex mode selection</li> <li>– Flow Control disable / enable</li> </ul> |
| VLAN                  | Port-Based / 802.1Q Tagged Based VLAN, Up to 4096 VLAN groups  |
| Link Aggregation      | Supports 5 groups of 8-Port trunk, IEEE 802.3ad LACP   |
| QoS                   | 8 Priority Queue and traffic classification based on 802.1p priority, DSCP field in IP Packet  |
| IGMP Snooping         | IGMP (v1/v2) Snooping, up to 64 multicast Groups   |
| Port Mirror           | Multi-port to one with TX or/and RX  |
| SNMP MIBs             | RFC-1213 MIB-2<br>RFC-1573-Interface MIB   |
| Standards Conformance |  |
| Network Standards     | IEEE 802.3 Ethernet  |
|                       | IEEE 802.3u Fast Ethernet  |
|                       | IEEE 802.3ab Gigabit Ethernet  |
|                       | IEEE 802.3z Gigabit Ethernet, 1000Base-SX/LX   |
|                       | IEEE 802.1q Tagged VLAN  |
|                       | IEEE 802.1w Rapid Spanning Tree  |
|                       | IEEE 802.1X Port-Based Authentication  |
| Operating Temperature | -20~70°C   |
| Storage Temperature   | -40~80°C   |
| Operating Humidity    | 5% to 90% , relative humidity, non-condensing  |
| Storage Humidity      | 5% to 90% , relative humidity, non-condensing  |

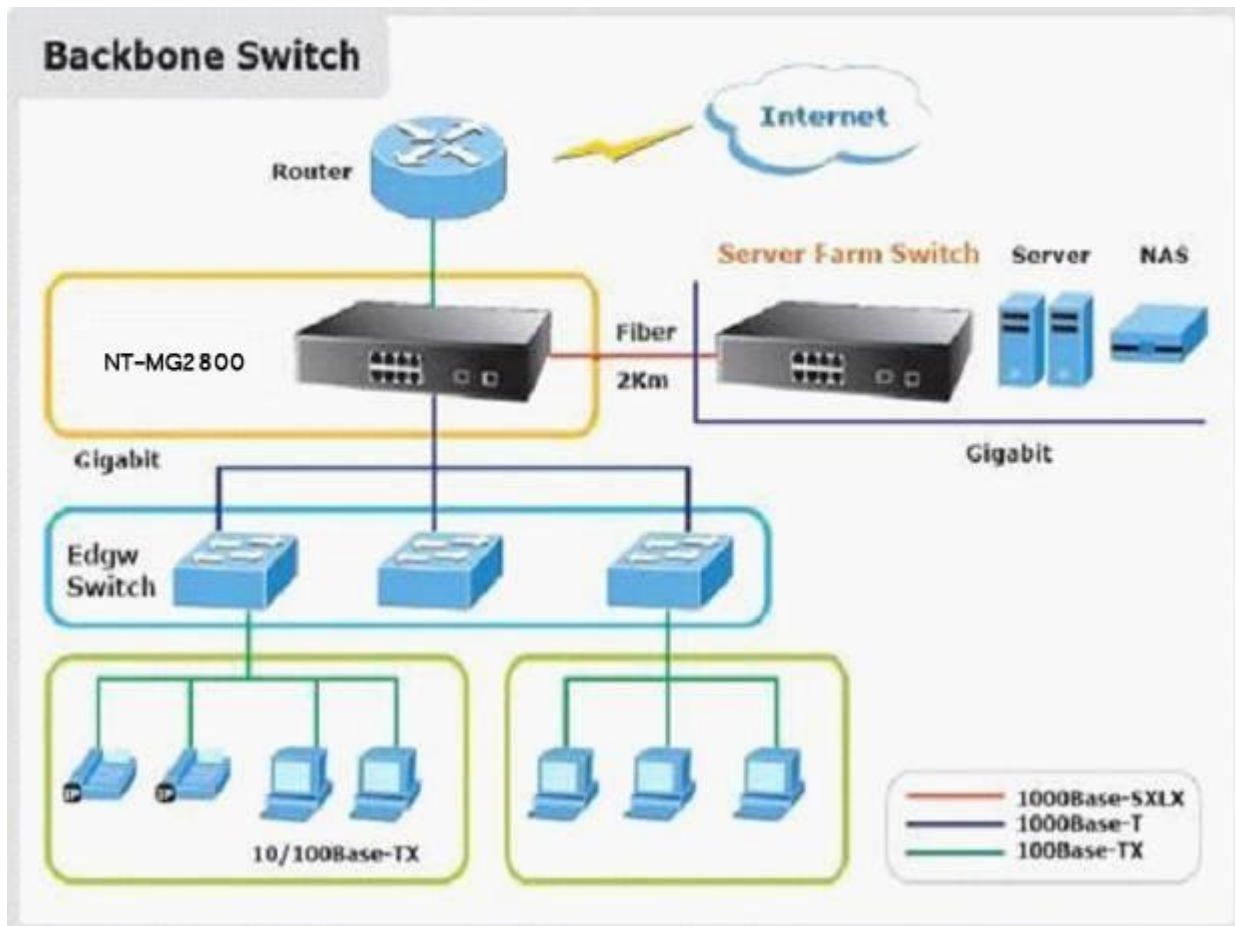


## Gigabit Managed Switch NT-MG2800SFP series

### Applications

#### Backbone Switch

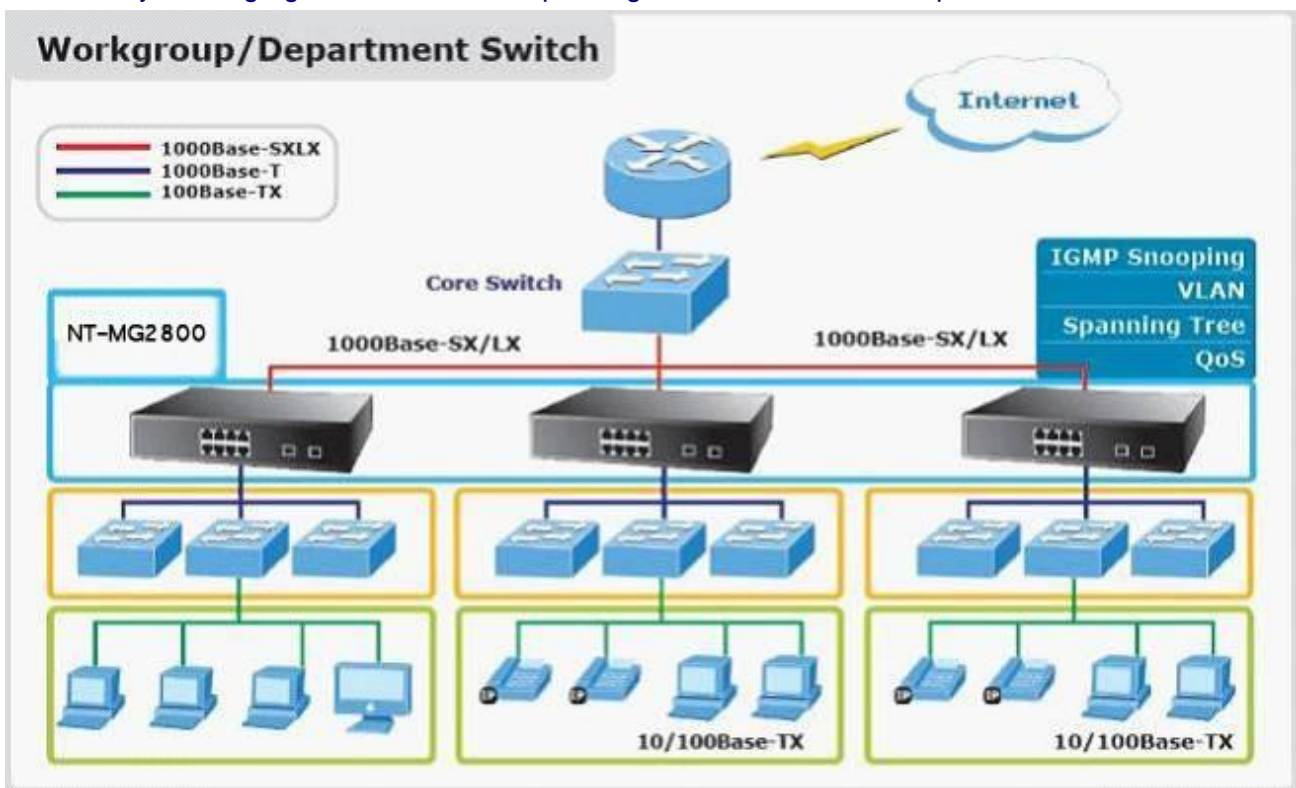
With a non-blocking design and desktop size, the N-net's NT-MG2800 8-Port Gigabit Ethernet Switch are as easy as installing a Fast Ethernet network, and it can be used to build up a Gigabit high-bandwidth switched network quickly and easily. With supporting for VLAN and port trunking on the NT-MG2800, users can directly connect to department switches or backbone servers





## Workgroup/Department Switch

With 8 10/100/1000Mbps ports, the NT-MG2800 provides a cost-effective and high-performance solution for SMB Departments and workgroups. In multiple applications, the advanced functionality of the NT-MG2800 eliminates traditional problems associated with Ethernet. Using the built-in VLAN functionality can segregate users and the Spanning tree can reduce the loop occur.



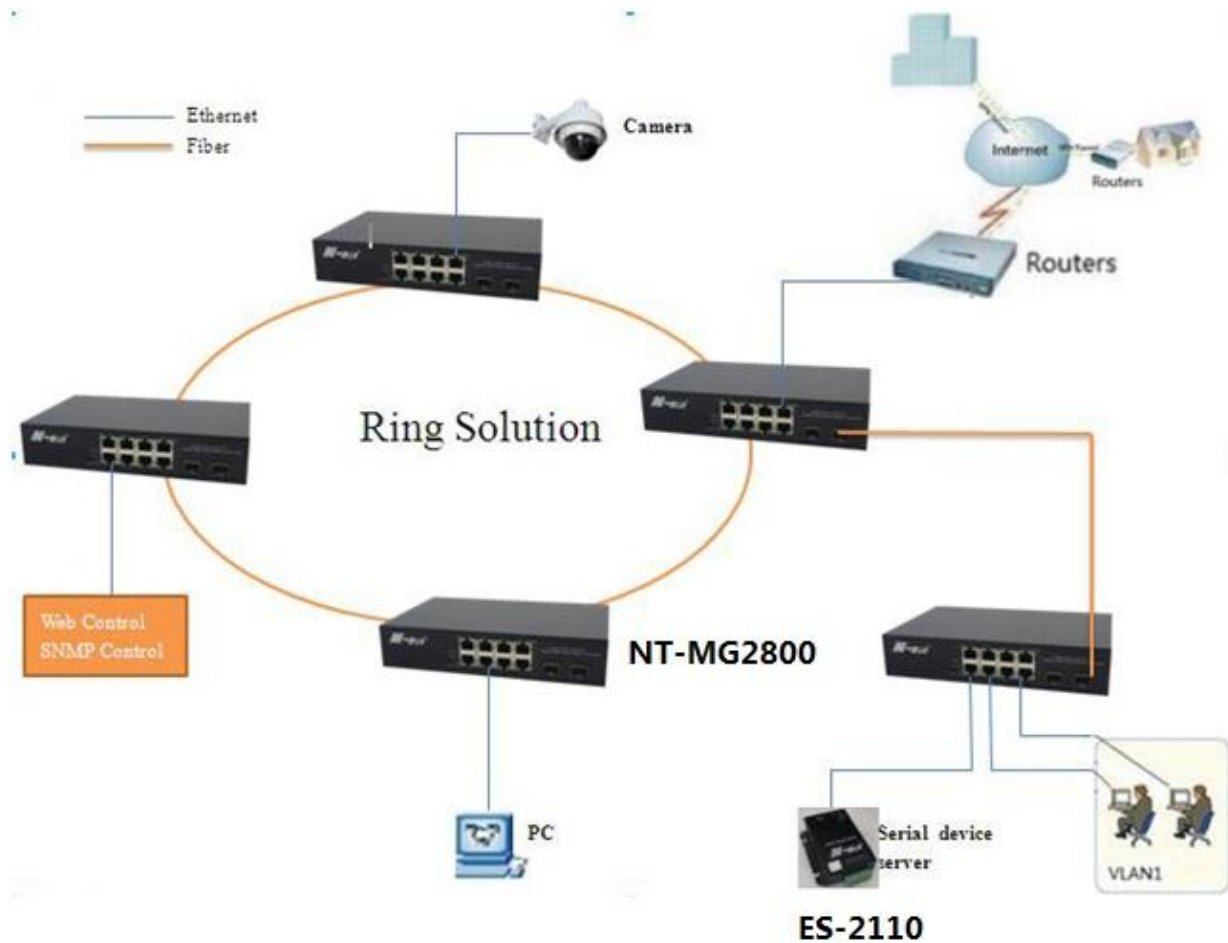
## FTTx Edge Switch

With two mini-GBIC 1000Base-SX/LX SFP (Small Form-factor Pluggable) interfaces, the deployed distance of NT-MG2800 can be extended from 550 meters (Multi-mode fiber) up to above 10/50/70/120 kilometers (Single-mode fiber) which just provides a high-performance edge device for FTTx solutions. To build a network solution of FTTH (Fiber to the Home) or FTTC (Fiber to the Curb) for ISPs and FTTB (Fiber to the Building) for enterprises, the various distances of SFP (small-form factor) and Bidi (WDM) transceivers are optional for customers. For security and applications, the 8 Gigabit ports can be configured with VLAN settings and connect to different units, offices, buildings, houses and departments.



## Gigabit Managed Switch NT-MG2800SFP series

### Application



### Ordering Information

NT-MG2800SFP

8-Port 10/100/1000Mbps Web Smart Gigabit Ethernet Switch