



10 Gigabit Repeater

NT-XG002/ NT-XG020/ NT-XG011 series

❖ Overview

The NT-XG002/ NT-XG020/ NT-XG011 series are managed 10G fiber to fiber 3R repeater and transponders. Based on a number of 10 Gigabit Fiber standards, these transponders support XFP to XFP, SFP+ to XFP, and SFP+ to SFP+ fiber connections. The transponders are protocol transparent, providing 3R (Re-amplification, Re-shaping and Re-clocking) regeneration between these different optical module types. One of the major applications is in connecting proprietary transceiver equipment to CWDM or DWDM when these 'colored' optical modules are not available for the proprietary equipment. With full duplex wire speed forwarding capability between the 2 fiber media, the NT-XG002/ NT-XG020/ NT-XG011 bring you the best and simplest solution for your 10G conversion between fiber and fiber..

❖ Features

- ❖ Multiple protocol supported 10G Ethernet, 10G FC, STM-64, OC-192
- ❖ Protocol transparent 3R fiber media transponder / repeater (Re-amplification, Re-shaping and Re-clocking)
- ❖ Pluggable SFP+ or XFP transceiver
- ❖ 10G ports offering multiservice; 10G transponder and regenerator function
- ❖ Provides superior optics capabilities resulting in extended transport distances for regional application.
- ❖ Extend 10G Ethernet transmission over fiber
- ❖ Useful as a 'Transponder' in CWDM or DWDM systems for 10G Ethernet/Fiber Channel/STM-64
- ❖ Supports Client / Line loop back tests



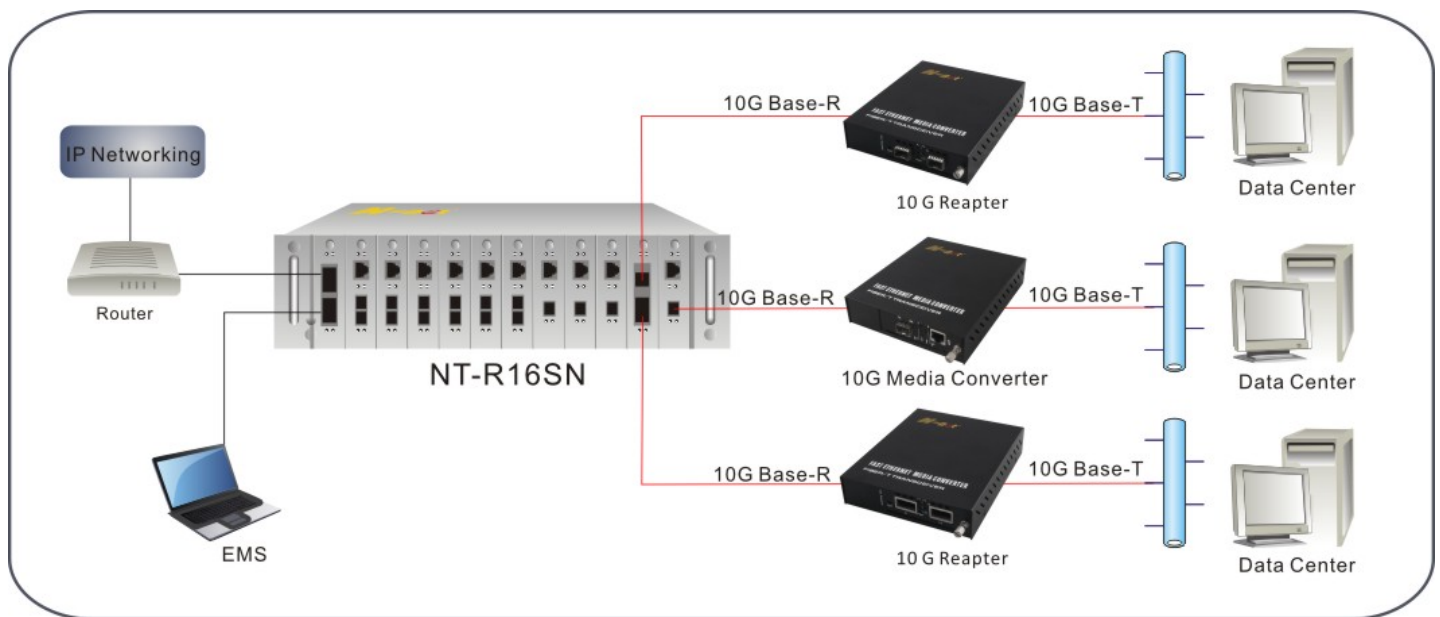
10 Gigabit Repeater

NT-XG002/ NT-XG020/ NT-XG011 series

❖ Specifications

Parameter	Specifications
Connector	LC, SFP+ and XFP interface(optional)
Traffic Format	<ul style="list-style-type: none">o OC-192/STM-64 (9.95328Gbps)o 10 Gigabit Ethernet LAN(10.3125Gbps)o G.709 OTU2 (10.709225Gbps)
Fiber Channel	1xFC(1.062 Gbps); 2xFC(2.125 Gbps);4xFC(4.25 Gbps); 8xFC(8.5 Gbps);10xFC(10.51875 Gbps)
Regeneration	Re-amplification, Re-shaping, Re-timing
Fiber	SM 9/125μm; MM 50/125μm or 62.5/125μm
Indications	LED (Power, P1 IN, P2 IN, P1 L/A, P2 L/A)
Power Input	Card : 5VDC , Standalone : AC,DC option
Power Consumption	<10W
Dimensions	Card:112.8 x 77.2 x 23mm (D x W x H) , standalone: 156 x 128x 32mm (D x W x H)
Weight	Card, 0.2kg
Temperature	0 ~ 60°C (Operating), -10 ~ 70°C (Storage)
Humidity	5 ~ 95% non-condensing
MTBF	50,000 hours

❖ Application



❖ Order Information

Model	Description
NT-XG002	10G XFP to XFP, standalone
NT-XG002P	10G XFP to XFP , rack-mountable (to NT-R16SN)
NT-XG020	10G SFP+ to SFP+ standalone
NT-XG020P	10G SFP+ to SFP+ rack-mountable (to NT-R16SN)
NT-XG011	10G XFP to SFP+ standalone
NT-XG011P	10G XFP to SFP+ rack-mountable (to NT-R16SN)