

DM-370 MICRO DC MOTOR

基本电压/Main Voltage : 6VDC、12VDC、24VDC

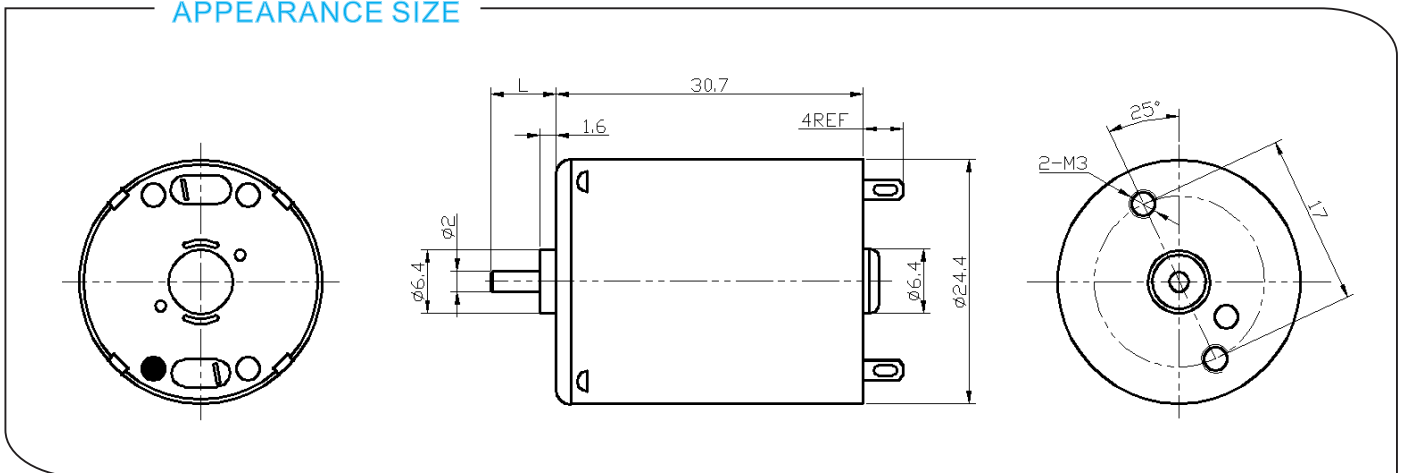
典型应用/Typical Applications :

按摩设备、电动玩具、家用电器、电子锁、照相机、CD/DVD播放器、电动剃须刀、自动化产品。

Message equipments, electronic toys, home appliances, electronic lock, camera, CD/DVD player, electric razor, automatic products.



APPEARANCE SIZE

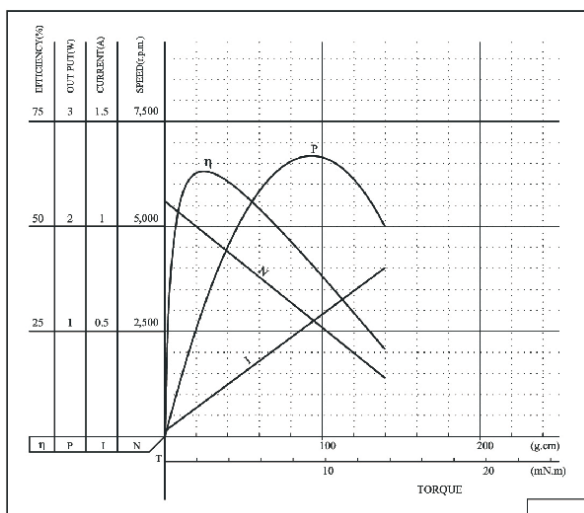


电机参数/ Motor Data :

型号 Model	电压/Voltage		空载/No load		负载/Load				堵转/Stall	
	电压范围 Operating range	工作电压 Normal	电流 Current	转速 Speed	电流 Current	转速 Speed	扭力 Torque	功率 Output	扭力 Torque	电流 Current
	V	V	mA	r/min	mA	r/min	g.cm	W	g.cm	mA
DM-370CH-15370	3.0-12.0	12.0	25	5600	160	4800	24.0	1.18	186.0	1060
DM-370CH-12560	4.0-12.0	12.0	18	3700	90	3000	20.0	0.62	125.0	460

曲线图/ Curve Chart :

MODEL: DM-370CH-15370



MODEL: DM-370CH-12560

