

NINGBO AIKEHAN METAL PRODUCT CO.,LTD

Brife introduction



factory introduction

Covering an area of about 7000 square meters(74800 square feet), it is made up of one moldmaking workshop(EDM machine.Slow cutting machine.grinding machine,mating machine), die casting workshop(Five sets hot chamber die casting machine and five cold chamber casting machines), CNC machining workshop(three CNC machining centers,five CNC lathes and milling machines),inspection workshop(in a controlled temperature for CMM facility) and an assembly workshop.All are equipped with advanced machines and qualified personel.With about 10 talented and experienced engineers as well as has a strong mold developing ability.

Based firmly on ISO9001 quality system,the company operates each link from raw materiats proccession to the production process in strict accordance.

AIKEHAN

Factory view





AIKEHAN



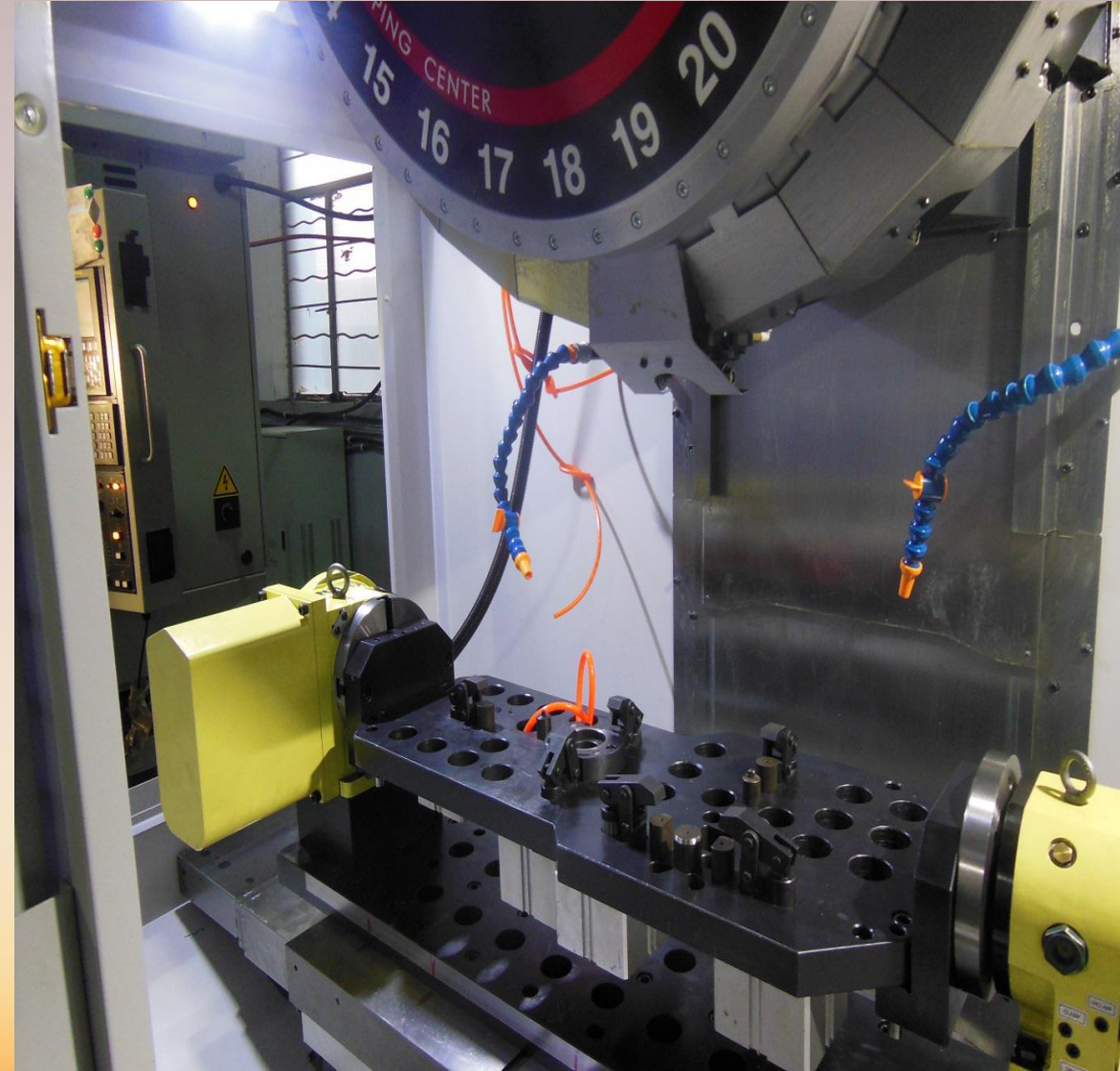
Mold-making workshop



Die casting Workshop



CNC Machining Center



CMM inspection and Warehouse



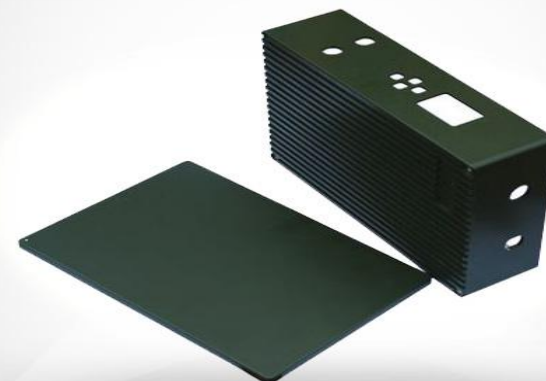
AIKEHAN



AIKEHAN



AIKEHAN



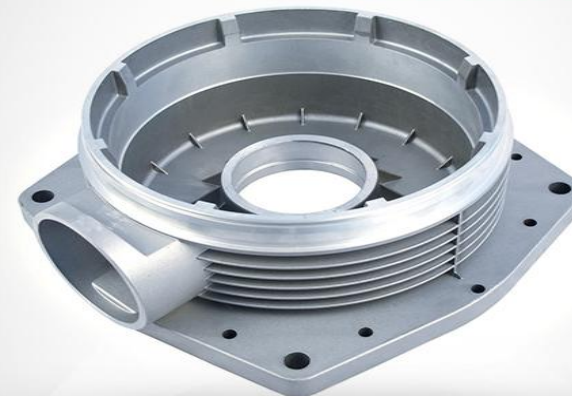
AIKEHAN



AIKEHAN



AIKEHAN





Aluminum LED lighting housing

AIKEHAN



AIKEHAN



AIKEHAN



AIKEHAN



AIKEHAN



AIKEHAN

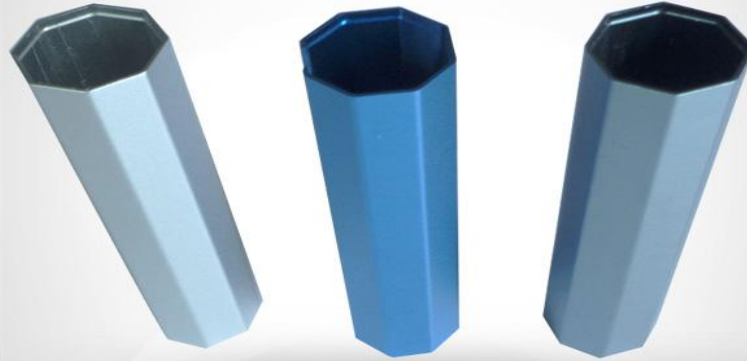


Aluminum extruded parts

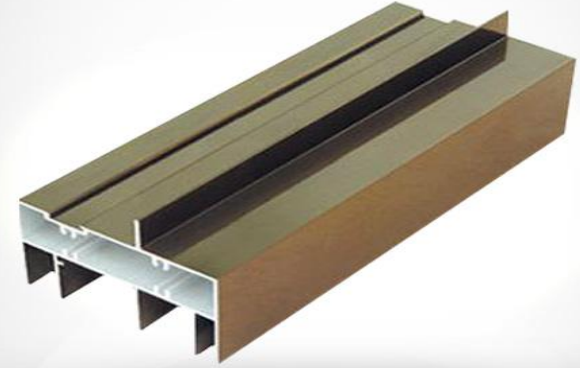
AIKEHAN



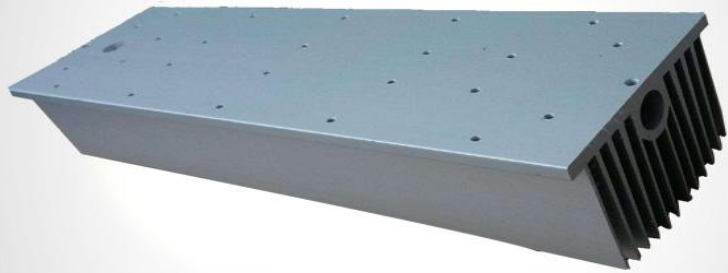
AIKEHAN



AIKEHAN



AIKEHAN



AIKEHAN



AIKEHAN



AIKEHAN



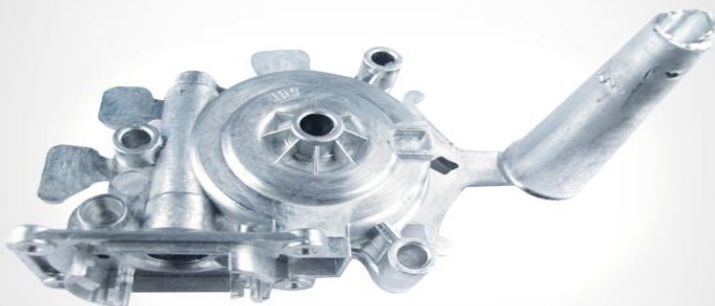
AIKEHAN



AIKEHAN



AIKEHAN



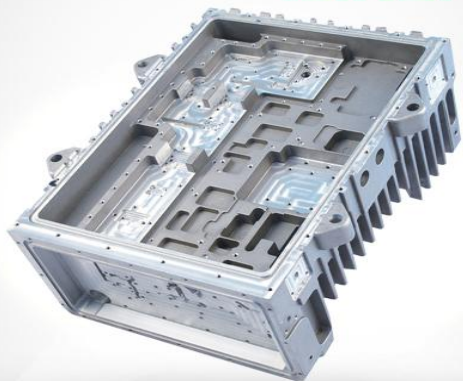
AIKEHAN



AIKEHAN



AIKEHAN



AIKEHAN



AIKEHAN



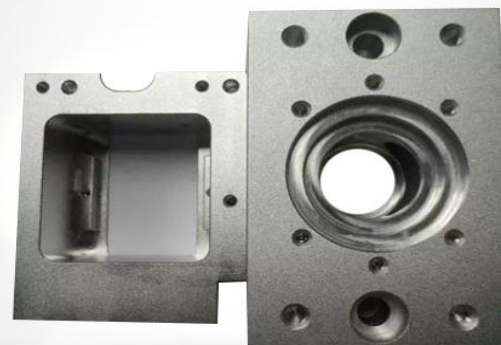
AIKEHAN



AIKEHAN



AIKEHAN



Foreign exhibition



Foreign exhibition





NINGBO AIKEHAN METAL PRODUCT CO.,LTD

NINGBO EVERGREEN MACHINERY CO.,LTD

www.akhdiecasting.com

www.diecastingsupplier.com

Add: NO200.Jinhe Road.Zhenhai District,Ningbo City.

315206.Zhejiang Province China

Cell/whatsApp:+86-13586820115

Skype:andyandy1505

Email:andy@diecastingsupplier.com

andyyan@akhdiecasting.com