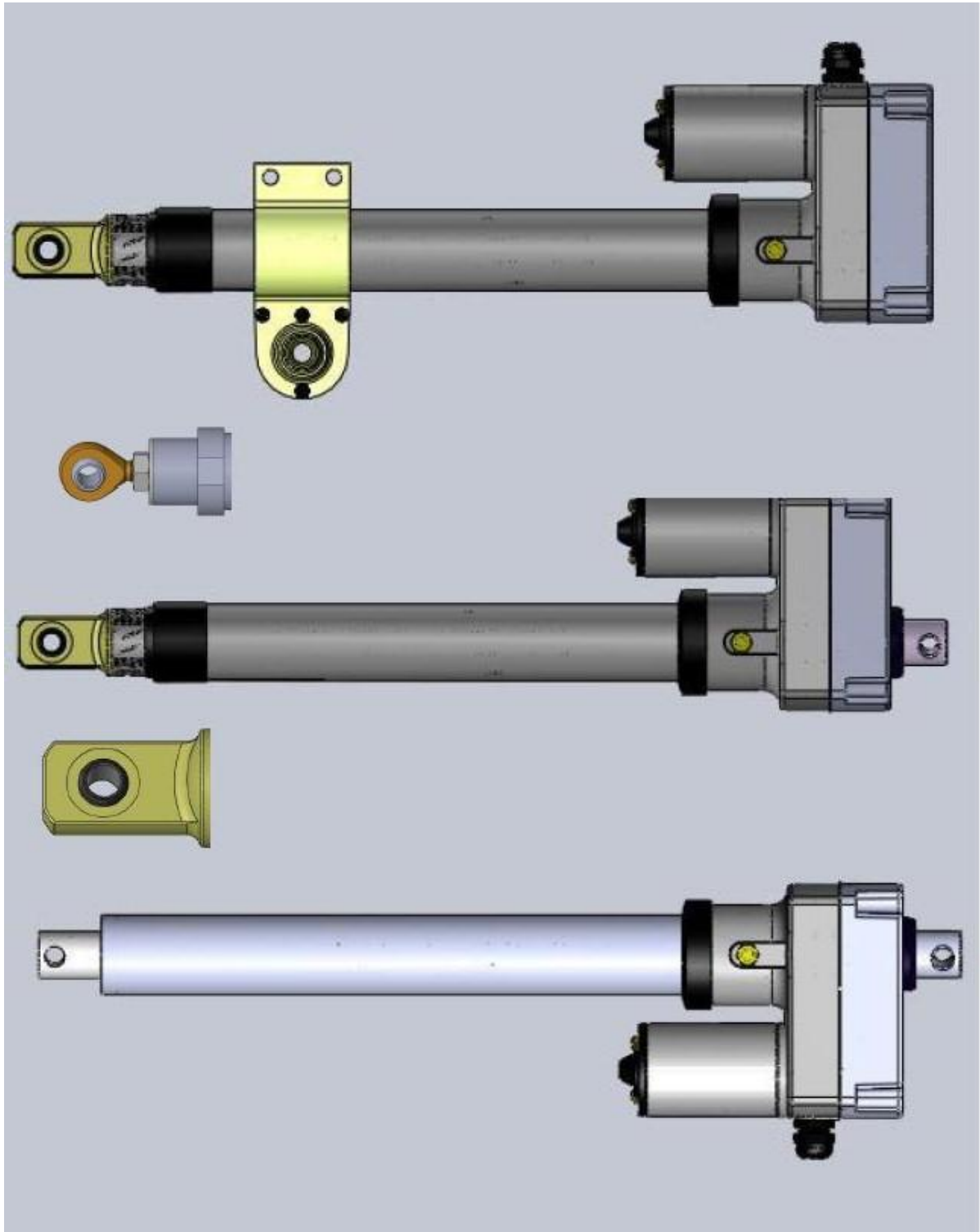


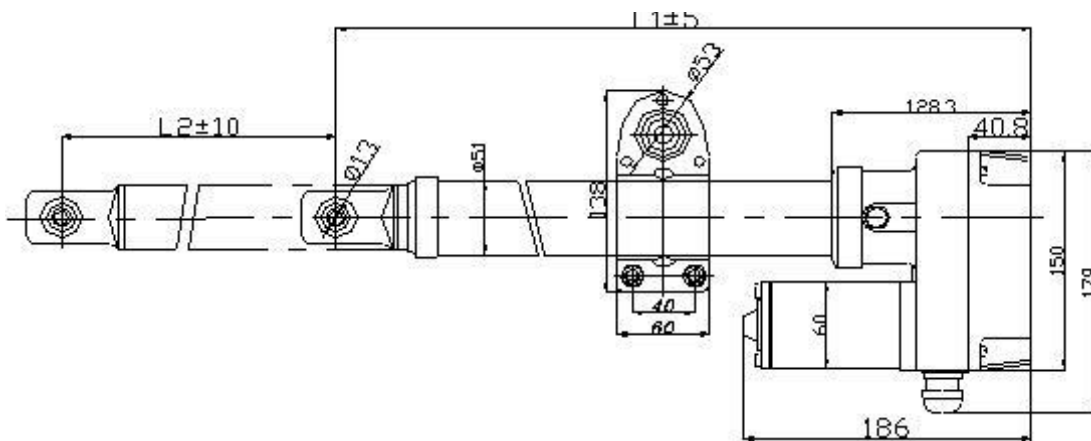
Linear actuator(电动推杆 LAC1500)



Specification(详细参数):

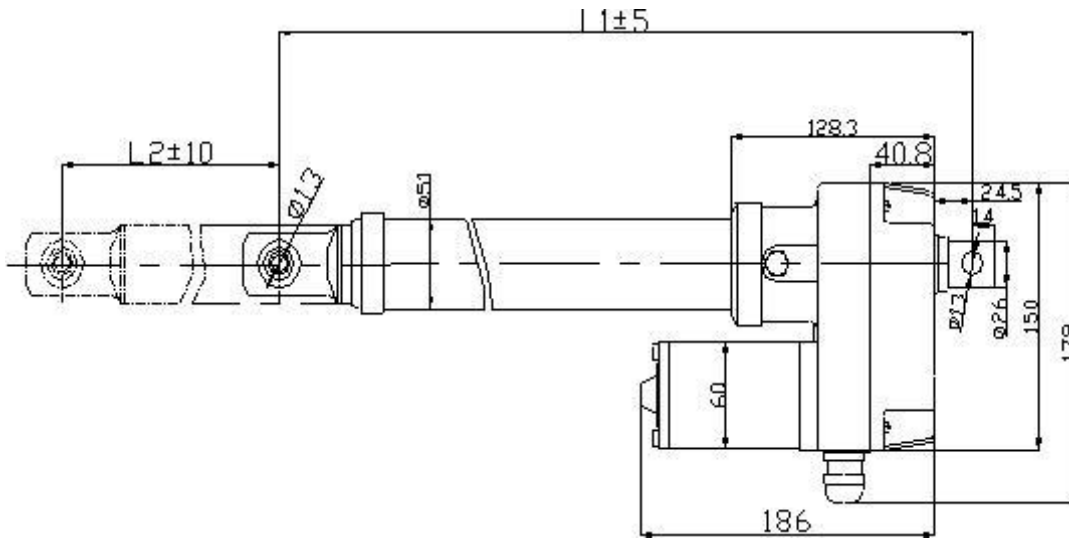
Model(产品)	ACTUATOR (LAC1500)
Input Voltage(电压)	DC12V/24V/36V
Load Capacity(负载)	3500N
Static Load(最大静负载)	9000N
Stroke Length(行程)	18",24",36"
Load current)(负载电流)	≤2.5A
Drive(螺杆形式)	ACME(梯形牙)
Full Load Speed(负载速度)	5mm/sec
Duty Cycle(使用频率)	20%
Temperature(使用环境温度)	-26°C~65 °C(-15°F~150°F)
Limit Switch(开关控制方式)	Adjustable(行程可调整)
Sensor(信号反馈)	Reed Switch Sensor(磁簧开关)/POT(电位器)

Size drawing(外形尺寸图 1)



Install 安装距离 L1	430	480	530	580	730	880	1180
Stroke 行程 L2	150	200	250	300	450	600	900

Size drawing(外形尺寸图 2)



Install 安装距离 L1	450	500	550	600	750	900	1200
Stroke 行程 L2	150	200	250	300	450	600	900

