

**GUANGDONG MOTOR HEALTH TECHNOLOGY CO., LTD**

Motor Type : GL82-45, AC, 1PH  
 Product Model : GL82-45R1-NBS-RD-164519-N  
 Product : Linear Actuator  
 Power Rating : 115VAC / 60Hz, 1.7A, 88W  
 Max. Load : 480 kg  
 Max. Speed : 4.2 mm/sec  
 Stroke : 14" / 355 mm  
 Int. Duty : 1min ON 5min OFF

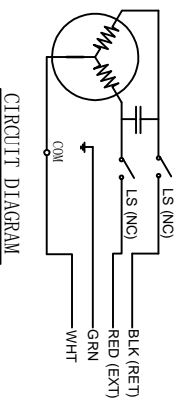
**TECHNICAL PRODUCT**

Part No. : **GL82-45R1-NBS-RD-164519**  
 Serial No. : **GLTC0205**  
 2018XXXXXXX

**ROHS**

**CMV**

ES35918



- Normal Characteristics**
- Power Rating : 115VAC / 60Hz / 1 Phase
  - H.P. : 1/8
  - Ratio : 22:1
  - Capacitor : 20UF/250VAC
  - Int. Duty : 1min. ON 5min. OFF
  - Insulation Class : A
  - Thermal Protector : 125°C
  - Retracted Length : 164 mm / 6.456 inch.
  - Stroke Length : 355 mm / 14 inch.
  - Noise : < 60 db
  - Rated Load : 480 kg
  - Max. Dynamic Load : 600 kg
  - Max. Static Load : 800 kg

**No Load Characteristics**

- Linear Speed : 4.2 mm/sec. (9.9 inch./min.)
- Current : 1.8A Max.

**Load Characteristics (480 Kgs /1050 Lbs. Push/Pull)**

- Linear Speed : 3.8 mm/sec. (8.9 inch./min.)
- Current : 2.1A Max.

Customer		Customer Confirmation:	
Product	LINEAR ACTUATOR	Tolerance	mm/inch
Model		X ±0.2	PAGE 1 OF 1
Design		X.X ±0.1	View Angle
Review		X.XX ±0.05	
Approve		Scale	1 : 3
			GUANGDONG G-MOTOR HEALTH TECHNOLOGY CO., LTD