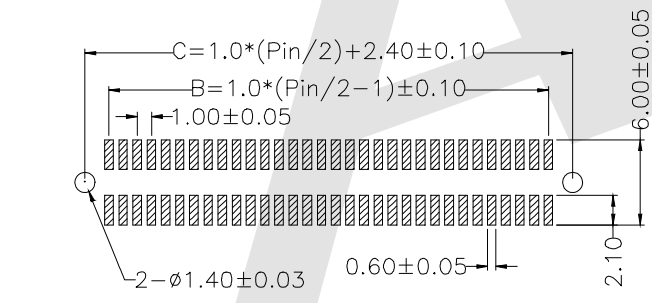
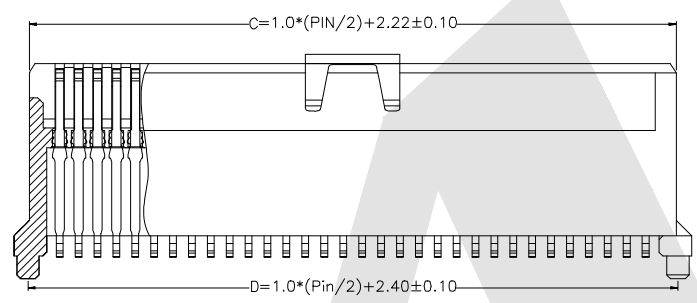
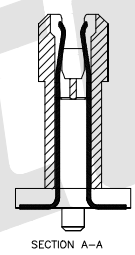
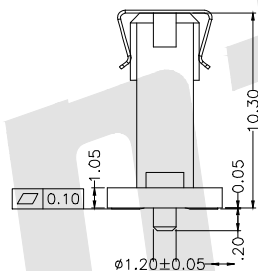
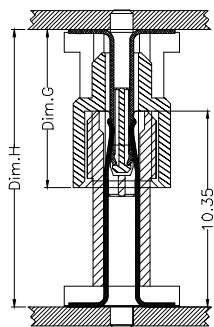
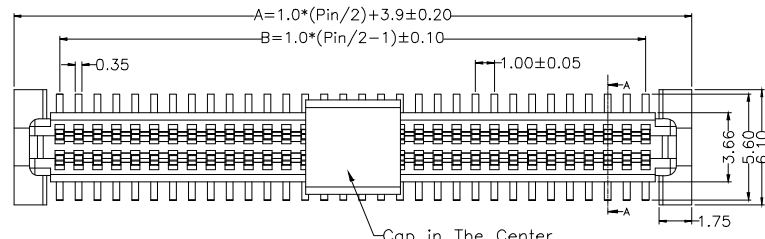




Dimensions :

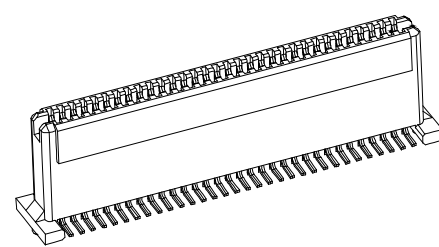
Number of Position	A	B	C	D
20	13.90	9.00	12.22	12.40
30	18.90	14.00	17.22	17.40
40	23.90	19.00	22.22	22.40
50	28.90	24.00	27.22	27.40
60	33.90	29.00	32.22	32.40
64	35.90	31.00	34.22	34.40
70	38.90	34.00	37.22	37.40
80	43.90	39.00	42.22	42.40
84	45.90	41.00	44.22	44.40
90	48.90	44.00	47.22	47.40
100	53.90	49.00	52.22	52.40
110	58.90	54.00	57.22	57.40
120	63.90	59.00	62.22	62.40

Socket Height Dim. G	Mating Height Dim. H
6.35	12.65
7.35	13.65
8.35	14.65



PCB Layout(Thickness:1.0±0.10 Min)

Scale:1:2



Specifications

Current rating:1.0A AC/DC
 Voltage rating:250V AC/DC
 Contact resistance:30m ohm Max.
 Insulation resistance:1000M ohm Min.
 Withstanding voltage:250V(r.m.s) for one Minute
 Operating temperatre range:-40°C to +80°C
 Materials:
 Insulator:high temp. plastic(LCP UL94V-0)
 Color:natural color

Conact:phosphor bronze plated:gold plated

Ordering Code:

BB1.0 - F - X - X - X - X - 01
 ① ② ③ ④ ⑤ ⑥ ⑦

- ① Series NO:
1.0mm Board to Board connector
- ② M:Male F:Female
- ③ mating Height:
12.65=12.65mm
13.65=13.65mm
14.65=14.65mm
- ④ NO. of contacts:
see table
For example
10:10poles
- ⑤ Contact Plating
G0: Gold flash
G1: 3u" Gold
G2: 5u" Gold
G3: 10u" Gold
G4: 15u" Gold
G5: 30u" Gold
SN:Tin
- ⑥ Packing
T:Tube A:Tray
B:Bag U:Tube+CAP
R:tape&Reel
W:tape&Reel+CAP
- ⑦ serial number:
01

Unless Otherwise specified tolerance
 X. ±0.35 X.XX: ±0.20
 X.X: ±0.25 X.XXX: ±0.15

SCALE: As Shown UNIT: mm
 DRAW Mo Guo Xuan DATE 12/11/2018
 CHECK BobYang DATE 12/11/2018



Antenk ANTENK ELECTRONICS CO.,LTD
 Http://www.antenk.com
 E-mail:sales@antenk.com

TITLE: 1.0mm Board to Board connector,
 Female, mating Height=12.65~14.65mm

DRAWING NO: BB1.0F-XXXX01
 PRODUCT NO: BB1.0F-XXXX01

REV	DESCRIPTION	DATE