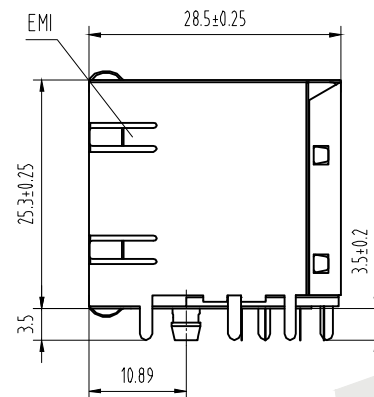
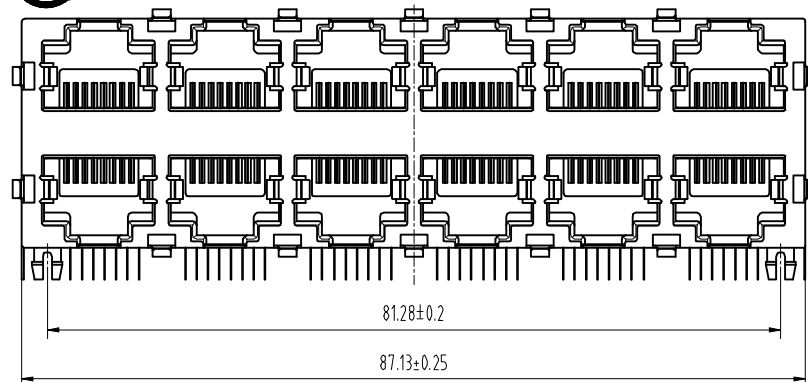


HSF



NOTES:

MATERIAL:

- HOUSING MATERIAL: GLASS FILLED POYESTER UL94V-0.
  - CONTACT MATERIAL: PHOSPHOR BRONZE  $t=0.3\text{mm}$
  - PLATING: SELECTING GOLD PLATING  $1\mu\sim 50\mu$  OVER NICKEL IN CONTACT AREA.  $150\mu$  TIN PLATIN. OVER NICKEL IN SOLDER AREA
  - SHIELD: 0.2mm THICKNESS COPPER WITH NICKEL PLATE
- ELECTRICAL
- VOLTAGE RATING: 125V AC RMS
  - CURRENT RATING: 1.5AMP
  - CONTACT RESISTANCE: 30 MILLIOHMS MAX
  - INSULATION RESISTANCE 500 MEGOHMS MIN @500V DC
  - DIELECTRIC WITHSTANDING RESISTANCE : 1000V AC RMS 50Hz. 1MIN

MECHANICAL

- DURRABILITY: 750 CYCLES MIN
- PCB RETENTTON PRB-SOLDER: 1 LB MIN

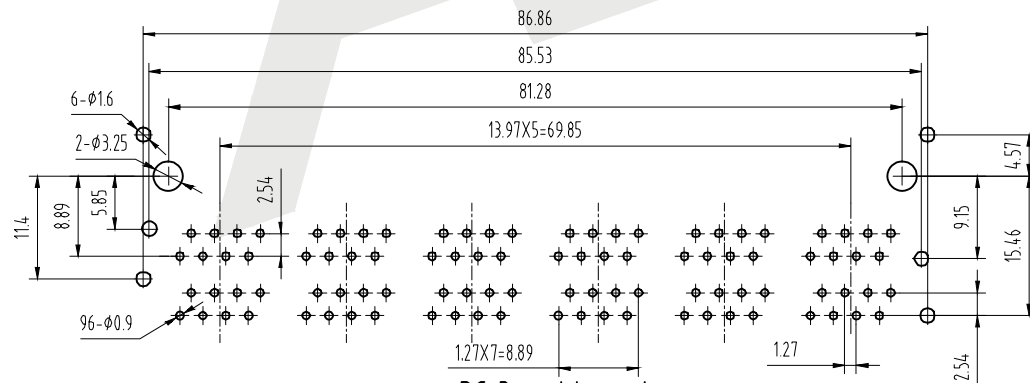
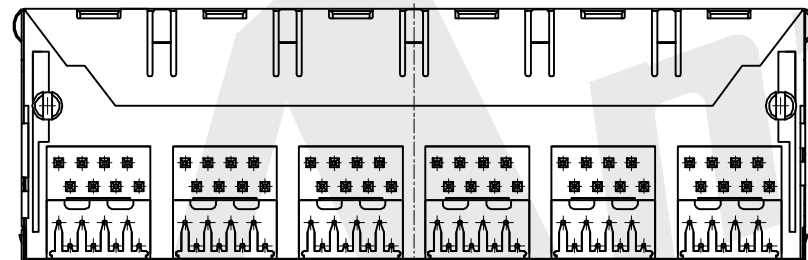
REVRONMENTAL

- STORAGE:  $-40^{\circ}\text{C}$  TO  $85^{\circ}\text{C}$
- OPERATION:  $0^{\circ}\text{C}$  TO  $70^{\circ}\text{C}$

Order code:

ATRJ5921 - 8P - 8C - X - C1 - K

①      ②      ③      ④      ⑤      ⑥



PC Board Layout  
Component Side Shown

- |   |                   |
|---|-------------------|
| ① SERIES NO:                            | ⑤ Shield          |
| ② NUMBER OF POSITIONS (10P, 8P, 6P, 4P) | A: W/O Shield     |
| ③ NUMBER OF CONTACTS (10C, 8C, 6C, 4C)  | B: Half Shield    |
| ④ Contact Plating                       | C: Shield W/Eml   |
| G0: Gold flash                          | D: Shield W/O Eml |
| G1: 3U" Gold                            | ⑥ Ports           |
| G2: 5U" Gold                            | A: 1X1P G: 2*1P   |
| G3: 10U" Gold                           | B: 1X2P H: 2*2P   |
| G4: 15U" Gold                           | C: 1X4P I: 2*3P   |
| G5: 30U" Gold                           | D: 1X5P J: 2*4P   |
| SN: Tin                                 | E: 1X6P K: 2*6P   |
|   | F: 1X8P L: 2*8P   |

Unless Otherwise specified tolerance  
X.  $\pm 0.35$  X.XX:  $\pm 0.20$   
X.X:  $\pm 0.25$  X.XXX:  $\pm 0.15$

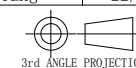
**Antenk**® ANTENK ELECTRONICS CO., LTD  
[Http://www.antenk.com](http://www.antenk.com)  
E-mail: sales@antenk.com

SCALE: As Shown	UNIT: mm
DRAW Wu Feng Rong	DATE 22/03/2018
CHECK BobYang	DATE 22/03/2018

TITLE: RJ45 Jack side entry full shielded 2X6P with EMI

DRAWING NO: ATRJ5921-8P8C-X-C1-K

PRODUCT NO: ATRJ5921-8P8C-X-C1-K



REV	DESCRIPTION	DATE
1	2	3
4	5	6
7	8	