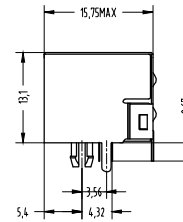
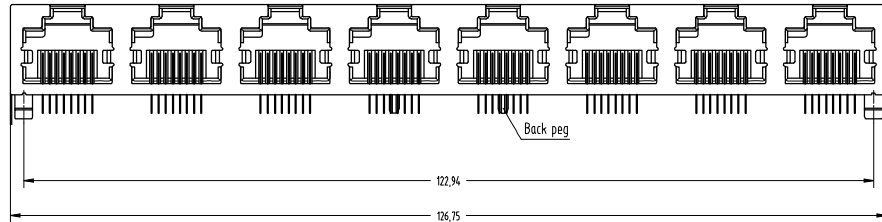


HSF



NOTES:

MATERIAL:

1. HOUSING MATERIAL: GLASS FILLED POYESTER UL94V-0.
2. CONTACT MATERIAL: PHOSPHOR BRONZE $t=0.3\text{mm}$
3. PLATING: SELECTING GOLD PLATING $1\mu\sim 50\mu$ OVER
NICKEL IN CONTACT AREA. 150μ TIN
PLATIN. OVER NICKEL IN SOLDER AREA
4. SHIELD: 0.2mm THICKNESS COPPER WITH NICKEL PLATE ELECTRICAL
1. VOLTAGE RATING: 125VAC RMS
2. CURRENT RATING: 1.5AMP
3. CONTACT RESISTANCE: 30MILLIOHMS MAX
4. INSULATION RESISTANCE 500MEG OHMS MIN @500V DC
5. DIELECTRIC WITHSTANDING RESISTANCE
: 1000V AC RMS 50Hz. 1MIN

MECHANICAL

1. DURRABILITY: 750 CYCLES MIN
2. PCB RETENTION PRB-SOLDER: 1 LB MIN REVRIMENTAL
1. STORAGE: -40°C TO 85°C
2. OPERATION: 0°C TO 70°C

Order code:

ATRJ5621 - 8P - 8C - X - D - F - A

① ② ③ ④ ⑤ ⑥ ⑦

① SERIES NO:

② NUMBER OF POSITIONS (10P, 8P, 6P, 4P)

③ NUMBER OF CONTACTS (10C, 8C, 6C, 4C)

④ Contact Plating

- G0: Gold flash
- G1: 3U" Gold
- G2: 5U" Gold
- G3: 10U" Gold
- G4: 15U" Gold
- G5: 30U" Gold
- SN: Tin

⑤ Shield

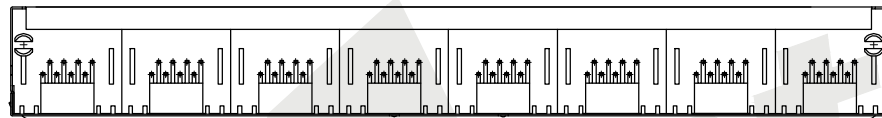
- A: W/O Shield
- B: Half Shield
- C: Shield W/Eml
- D: Shield W/O Eml

⑥ Ports

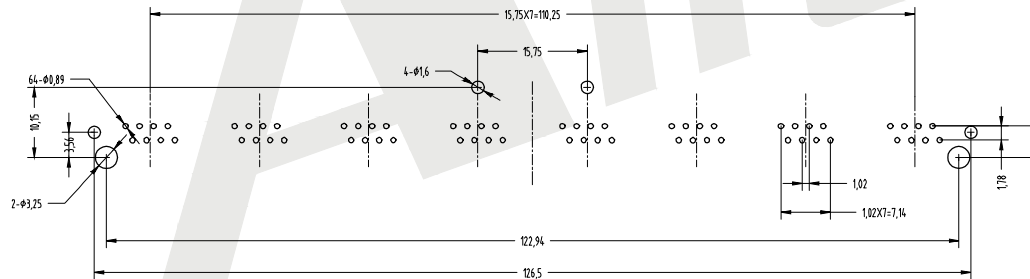
- A: 1X1P G: 2X1P
- B: 1X2P H: 2X2P
- C: 1X4P I: 2X3P
- D: 1X5P J: 2X4P
- E: 1X6P K: 2X6P
- F: 1X8P L: 2X8P

⑦ LED STYLE:

- A: W/O LED
- B: LEFT YELLOW/RIGHT GREEN
- C: LEFT GREEN/RIGHT YELLOW
- D: LEFT RED/RIGHT GREEN
- E: LEFT GREEN/RIGHT RED
- F: LEFT YELLOW/RIGHT YELLOW
- G: LEFT GREEN/RIGHT GREEN



PCB LAYOUT

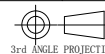


Unless Otherwise specified tolerance	
X. ±0.35	X.XX: ±0.20
X.X: ±0.25	X.XXX: ±0.15

SCALE: As Shown UNIT: mm

DRAW Wu Feng Rong DATE 22/03/2018

CHECK BobYang DATE 22/03/2018



ANTENK ELECTRONICS CO., LTD

Http://www.antenk.com

E-mail:sales@antenk.com

TITLE: RJ45 JACK side entry, 1X8Port shielded without EMI&LED

DRAWING NO: ATRJ5621-8P8C-X-D-F-A

PRODUCT NO: ATRJ5621-8P8C-X-D-F-A

REV	DESCRIPTION	DATE
1		
2		
3		
4		
5		