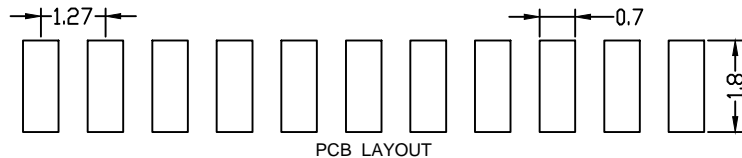
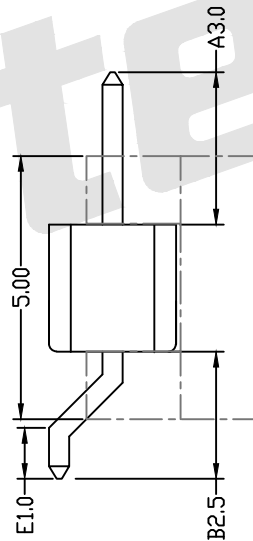
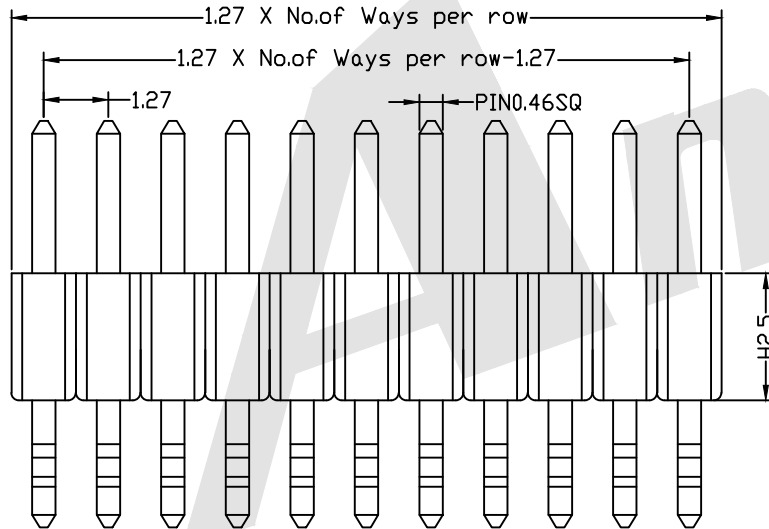
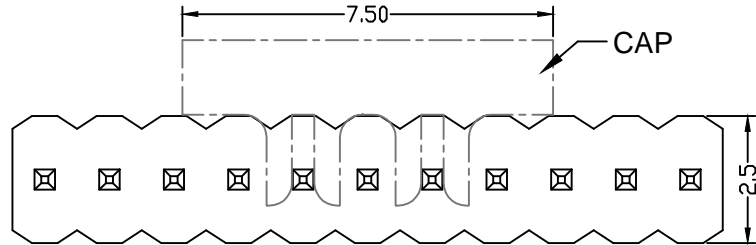




1.27mm Pin Header Single Row Angle SMT Type



PCB LAYOUT

SPECIFICATION

Current Rating:	1Amp
Insulation Resistance:	1000M ohms min
Contact Resistance:	20M ohms max
Dielectric Withstanding:	AC500V
Operating Temperature:	-65°C to +125°C
Contact Material:	Brass
Insulator Material:	PA6T,UL 94V-0 Black

Ordering Code:

PHCM02 - X - X - S - A-B - X - X
 ① ② ③ ④ ⑤ ⑥ ⑦

- ① Series No:
- ② No. of Contacts
01 To 50
- ③ Contact Plating:
G0:Gold flash S0:Selective
G1:3U" Gold S1:Selective 3u"
G2:5u" Gold S2:Selective 5u"
G3:10u" Gold S3:Selective 10u"
G4:15u" Gold S4:Selective 15u"
G5:30u" Gold S5:Selective 30u"
SN:Tin
- ④ Connector Type
S:Single
- ⑤ Pin Length:
A: 0300=3.00mm
B: 0250=2.50mm
Please mark the desired length in the A/B
- ⑥ Insulator Material
B:PA6T
C:LCP
E:PA9T
- ⑦ Packing
A:Tray
B:Bag
T:Tube
U:Tube+CAP
R:Tape&Reel
W:Tape&Reel+CAP

Standard IE P/N :

PHCM02-10 - G0 -S - 0300-0250 - B - B

A	B	Unless Otherwise specified tolerance	
3.0	2.5	X. ±0.35	X.XX: ±0.20
		X.X: ±0.25	X.XXX: ±0.15
Optional		SCALE: As Shown	UNIT: mm



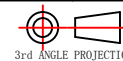
ANTENK ELECTRONICS CO., LTD
 Http://www.antenk.com
 E-mail:sales@antenk.com

DRAW YG ZHONG	DATE 12/11/2015
CHECK BobYang	DATE 12/11/2015

TITLE:
1.27mm Pin Header Single Row Angle SMT Type

DRAWING NO: PHCM02-XXS-0300-0250-XX
 PRODUCT NO: PHCM02-XXS-0300-0250-XX

REV	DESCRIPTION	DATE
	Increase packing method and material	2016/10/25



3rd ANGLE PROJECTION