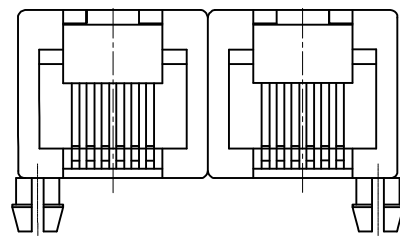
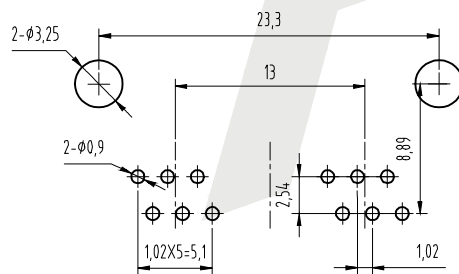
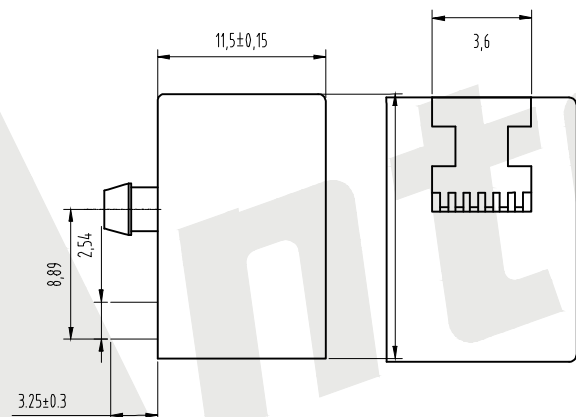
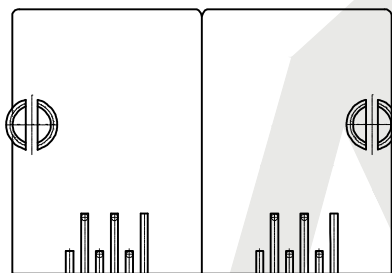


HSF



23,3



PC Board Layout  
Component Side Shown

NOTES:

MATERIAL:

1. HOUSING MATERIAL: GLASS FILLED POYESTER UL94V-0.
2. CONTACT MATERIAL: PHOSPHOR BRONZE  $t=0.3\text{mm}$
3. PLATING: SELECTING GOLD PLATING  $1\mu \sim 50\mu$  OVER NICKEL IN CONTACT AREA.  $150\mu$  TIN PLATIN. OVER NICKEL IN SOLDER AREA
4. SHIELD: 0.2mm THICKNESS COPPER WITH NICKEL PLATE

ELECTRICAL

1. VOLTAGE RATING: 125VAC RMS
2. CURRENT RATING: 1.5AMP
3. CONTACT RESISTANCE: 30MILLIOHMS MAX
4. INSULATION RESISTANCE 500MEGOHMS MIN @500V DC
5. DIELECTRIC WITHSTANDING RESISTANCE : 1000V AC RMS 50Hz. 1MIN

MECHANICAL

1. DURRABILITY: 750 CYCLES MIN
2. PCB RETENTTON PRB-SOLDER: 1 LB MIN

REVIROMENTAL

1. STORAGE:  $-40^{\circ}\text{C}$  TO  $85^{\circ}\text{C}$
2. OPERATION:  $0^{\circ}\text{C}$  TO  $70^{\circ}\text{C}$

Order code:

ATRJ5321 - 6P - 6C - X - A - B

①            ②            ③            ④            ⑤            ⑥

- |                                    |                   |
|------------------------------------|-------------------|
| ① SERIES NO:                       | ⑤ Shield          |
| ② NUMBER OF POSITIONS (8P, 6P, 4P) | A: W/O Shield     |
| ③ NUMBER OF CONTACTS (8C, 6C, 4C)  | B: Half Shield    |
| ④ Contact Plating                  | C: Shield W/Eml   |
| G0: Gold flash                     | D: Shield W/O Eml |
| G1: 3U" Gold                       | ⑥ Ports           |
| G2: 5U" Gold                       | A: 1X1P           |
| G3: 10U" Gold                      | B: 1X2P           |
| G4: 15U" Gold                      | C: 1X4P           |
| G5: 30U" Gold                      | D: 1X5P           |
| SN: Tin                            | E: 1X6P           |
|                                    | F: 1X8P           |

Unless Otherwise specified tolerance  
X.  $\pm 0.35$  X.XX:  $\pm 0.20$   
X.X:  $\pm 0.25$  X.XXX:  $\pm 0.15$

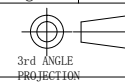
**Antenk**® ANTENK ELECTRONICS CO., LTD  
Http://www.antenk.com  
E-mail:sales@antenk.com

SCALE: As Shown	UNIT: mm
DRAW Wu Feng Rong	DATE 05/09/2019
CHECK BobYang	DATE 05/09/2019

TITLE: RJ11 Jack 6P6C side entry,  
1X2port, Full shielded

DRAWING NO: ATRJ5321-6P6C-X-A-B

PRODUCT NO: ATRJ5321-6P6C-X-A-B



REV	DESCRIPTION	DATE
1		
2		
3		
4		
5		