

SPECIFICATIONS:

- Voltage rating: 250V AC/DC
- Current rating: 7A AC/DC
- Withstanding Voltage: 1500V AC/minute
- Insulation resistance: 1000MΩ Min.
- Temperature range: -40°C To +105°C
- Contact resistance: 20mΩ Max.

Standards

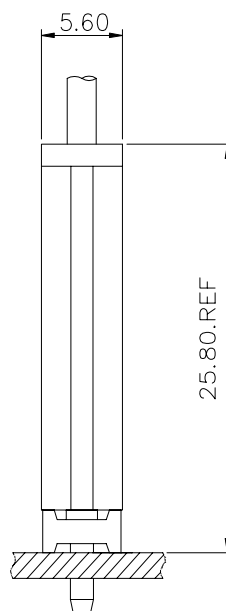
HSF



RoHS

Wire to Board

Assembly Layout



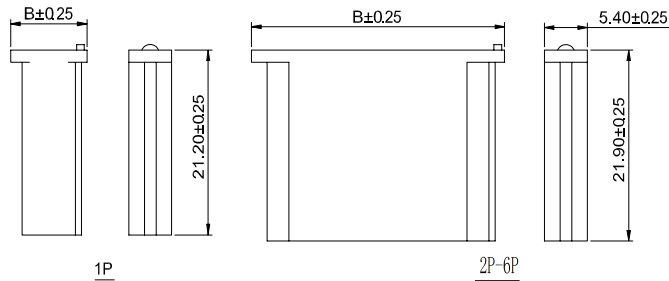
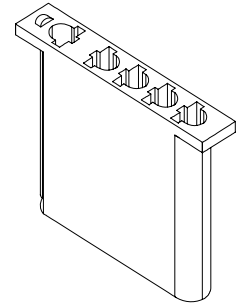
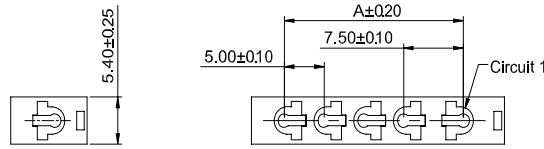
Wire To Board

Connectors Expert Around You

7.50-5.00mm Pitch housing connector

HOUSING

- Part NO.: AH1562-xP
- Suitable: AT1562T series Terminal
- Mates with: AW1562 series Wafer
- Material: Nylon 66, UL94V-0
- Color: White



Ordering Information & Dimensions:

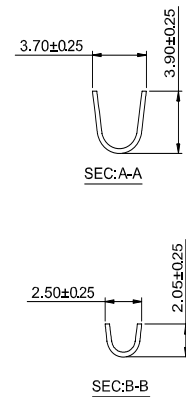
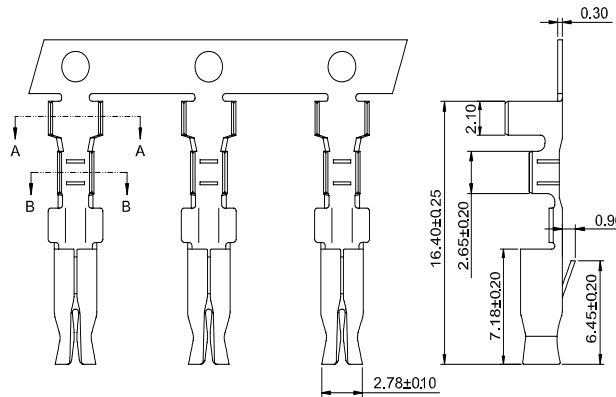
Poles	Part No.	Dimensions (mm)	
		A	B
01	AH1562-01P	—	9.60
02	AH1562-02P	7.50	16.00
03	AH1562-03P	12.50	21.80
04	AH1562-04P	17.50	26.80
05	AH1562-05P	22.50	31.80
06	AH1562-06P	27.50	36.80

Wire to Board

7.50-5.00mm Pitch crimp terminal connector

TERMINAL

- Part NO: AT1562T-xP
- Applicable wire: AWG#18-#24
- Material: Brass or Phosphor Bronze
- Finish: Tin Plated or Gold
- Used in AH1562 series Housing



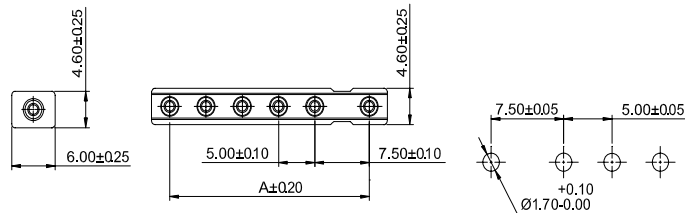
Ordering information & Specifications

Part NO.	Wire Range	Insulation O.D.	Material	Finish	Qty/reel
AT1562T-1B	AWG#18-#24	2.70mm(max)	Brass	Tin over Nickel	6,000 PCS
AT1562T-1P	AWG#18-#24	2.70mm(max)	Phosphor Bronze	Tin over Nickel	6,000 PCS
AT1562T-1B	AWG#18-#24	2.70mm(max)	Brass	Gold over Nickel	6,000 PCS
AT1562T-1P	AWG#18-#24	2.70mm(max)	Phosphor Bronze	Gold over Nickel	6,000 PCS

7.50-5.00mm Pitch 180° wafer connector

WAFER

- Part NO: AW1562V-xP
- Material: Pin: Brass/Tin over Nickel
- Insulator: Nylon 66, UL94V-0
- Mates with: AH1562 series Housing
- Color: White



P.C.B LAYOUT

Ordering Information & Dimensions:

Poles	Part No.	Dimensions (mm)	
		A	B
01	AW1562V-01P	—	6.00
02	AW1562V-02P	7.50	12.60
03	AW1562V-03P	12.50	17.60
04	AW1562V-04P	17.50	22.60
05	AW1562V-05P	22.50	27.60
06	AW1562V-06P	27.50	32.60

