

## SPECIFICATIONS:

- Voltage rating: 350V AC/DC
- Current rating: 3A AC/DC
- Withstanding Voltage: 500V AC/minute
- Insulation resistance: 1000MΩ Min.
- Temperature range: -40°C To +105°C
- Contact resistance: 20mΩ Max.

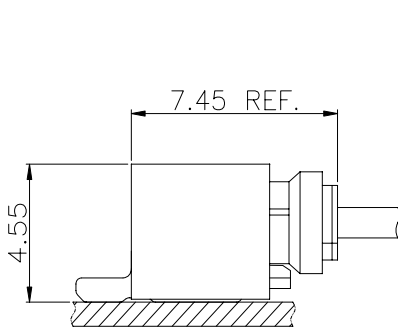
## Standards



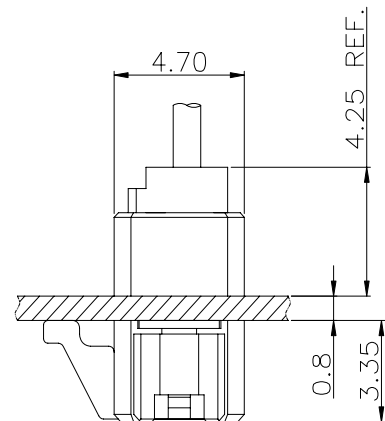
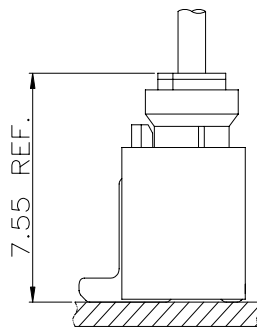
RoHS

Wire to Board

### Assembly Layout



SMT TYPE



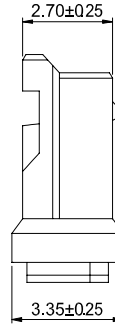
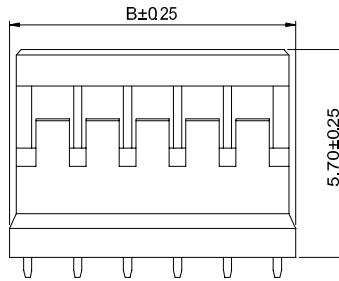
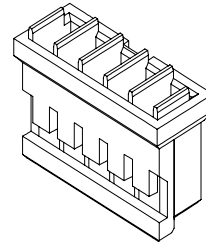
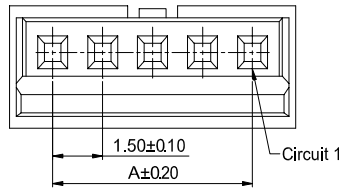
Broken Plate TYPE

Connectors Expert Around You

## 1.50mm Pitch housing connector

### HOUSING

- Part NO.:AH1502-xP
- Suitable:AT1502T series Terminal
- Mates with:AW1502 series Wafer
- Material:Nylon 66,UL94V-0
- Color:White



Ordering Information & Dimensions:

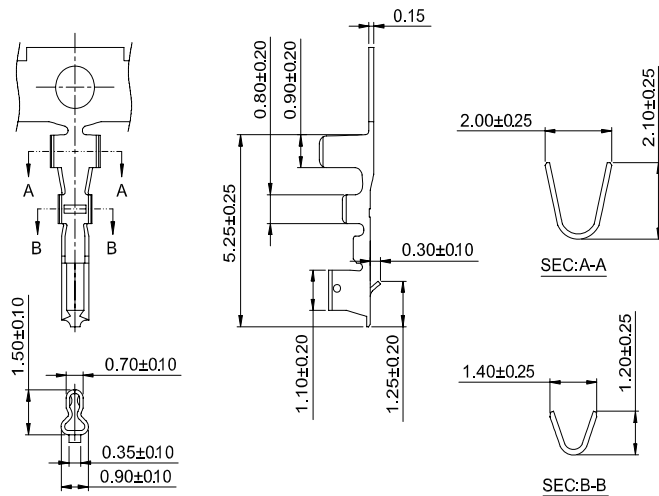
Poles	Part No.	Dimensions (mm)	
		A	B
02	AH1502-02P	1.50	4.10
03	AH1502-03P	3.00	5.60
04	AH1502-04P	4.50	7.10
05	AH1502-05P	6.00	8.60
06	AH1502-06P	7.50	10.10
07	AH1502-07P	9.00	11.60
08	AH1502-08P	10.50	13.10
09	AH1502-09P	12.00	14.60
10	AH1502-10P	13.50	16.10
11	AH1502-11P	15.00	17.60
12	AH1502-12P	16.50	19.10
13	AH1502-13P	18.00	20.60
14	AH1502-14P	19.50	22.10
15	AH1502-15P	21.00	23.60

Wire to Board

## 1.50mm Pitch crimp terminal connector

### TERMINAL

- Part NO:AT1502T-xP
- Applicable wire:AWG#24-#28
- Material:Phosphor Bronze
- Finish:Tin Plated or Gold
- Used in AH1502 series Housing



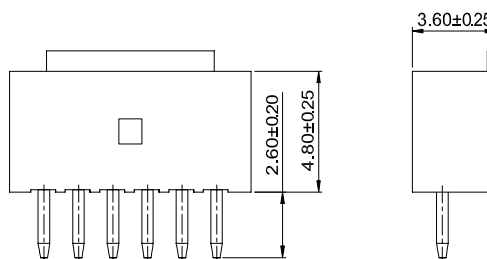
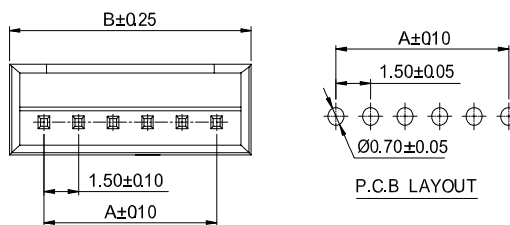
Ordering information & Specifications

Part NO.	Wire Range	Insulation O.D.	Material	Finish	Qty/reel
AT1502T-1P	AWG#24-#28	1.10mm(max)	Phosphor Bronze	Tin over Nickel	10,000 PCS
AT1502T-6P	AWG#24-#28	1.10mm(max)	Phosphor Bronze	Gold over Nickel	10,000 PCS

## 1.50mm Pitch 180° wafer connector

### WAFER

- Part NO:AW1502V-xP
- Material:Pin:Brass/Tin over Nickel
- Insulator:Nylon 66, UL94V-0
- Mates with:AH1502 series Housing
- Color: White



Ordering Information & Dimensions:

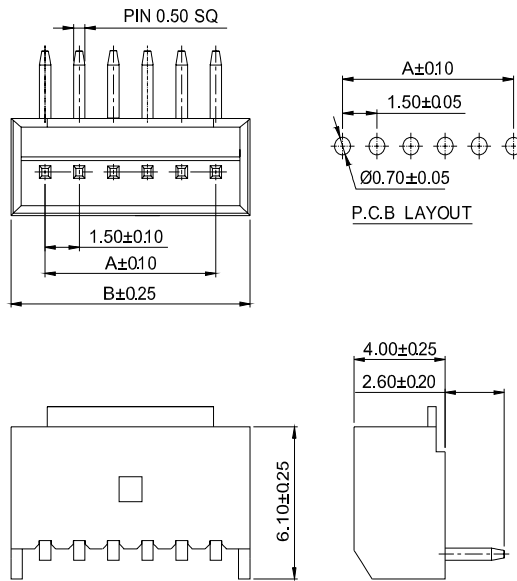
Poles	Part No.	Dimensions (mm)	
		A	B
02	AW1502V-02P	1.50	4.50
03	AW1502V-03P	3.00	6.00
04	AW1502V-04P	4.50	7.50
05	AW1502V-05P	6.00	9.00
06	AW1502V-06P	7.50	10.50
07	AW1502V-07P	9.00	12.00
08	AW1502V-08P	10.50	13.50
09	AW1502V-09P	12.00	15.00
10	AW1502V-10P	13.50	16.50
11	AW1502V-11P	15.00	18.00
12	AW1502V-12P	16.50	19.50
13	AW1502V-13P	18.00	21.00
14	AW1502V-14P	19.50	22.50
15	AW1502V-15P	21.00	24.00

Connectors Expert Around You

## 1.50mm Pitch 90° wafer connector

WAFER

- Part NO:AW1502R-xP
- Material:Pin:Brass/Tin over Nickel
- Insulator:Nylon 66, UL94V-0
- Mates with:AH1502 series Housing
- Color: White



Ordering Information & Dimensions

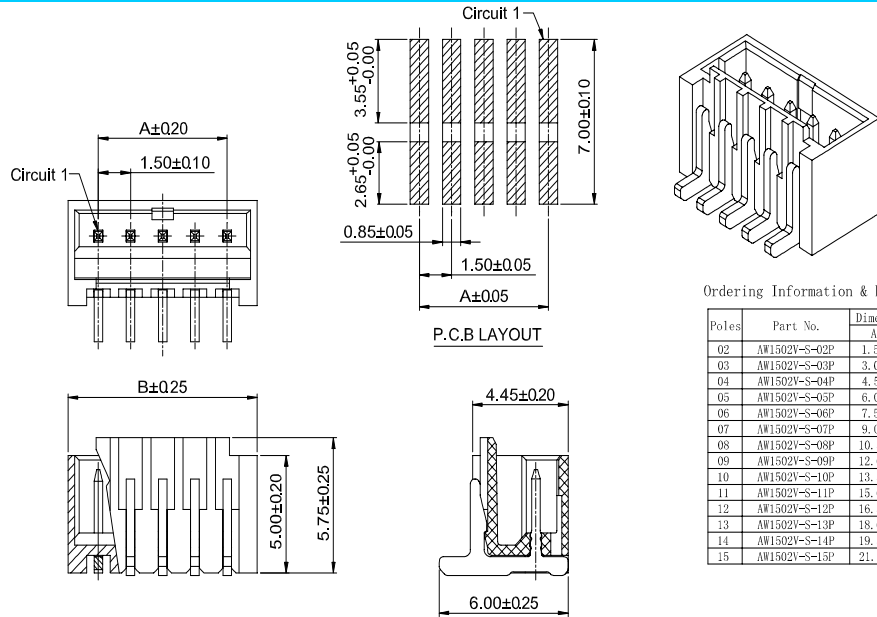
Poles	Part No.	Dimensions(mm)	
		A	B
02	AW1502R-02P	1.50	4.50
03	AW1502R-03P	3.00	6.00
04	AW1502R-04P	4.50	7.50
05	AW1502R-05P	6.00	9.00
06	AW1502R-06P	7.50	10.50
07	AW1502R-07P	9.00	12.00
08	AW1502R-08P	10.50	13.50
09	AW1502R-09P	12.00	15.00
10	AW1502R-10P	13.50	16.50
11	AW1502R-11P	15.00	18.00
12	AW1502R-12P	16.50	19.50
13	AW1502R-13P	18.00	21.00
14	AW1502R-14P	19.50	22.50
15	AW1502R-15P	21.00	24.00

Wire to Board

## 1.50mm Pitch 180° wafer-smt connector

WAFER

- Part NO:AW1502V-S-xP
- Material:Pin:Brass/Tin over Nickel
- Insulator:Nylon 6T, UL94V-0
- Mates with:AH1502 series Housing
- Color: Ivory



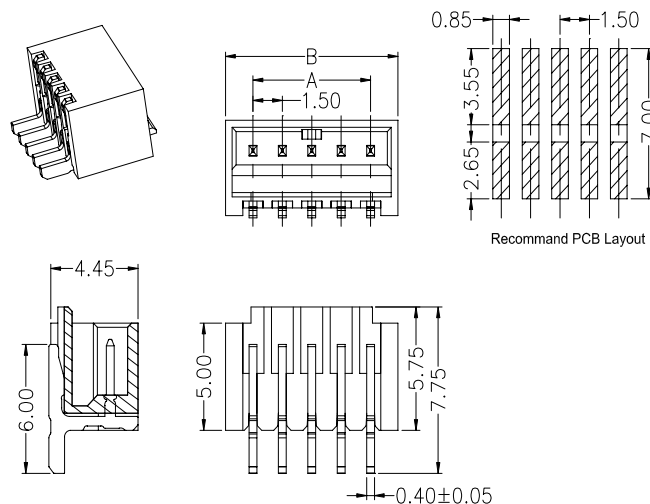
Ordering Information & Dimensions:

Poles	Part No.	Dimensions(mm)	
		A	B
02	AW1502V-S-02P	1.50	4.30
03	AW1502V-S-03P	3.00	5.80
04	AW1502V-S-04P	4.50	7.30
05	AW1502V-S-05P	6.00	8.80
06	AW1502V-S-06P	7.50	10.30
07	AW1502V-S-07P	9.00	11.80
08	AW1502V-S-08P	10.50	13.30
09	AW1502V-S-09P	12.00	14.80
10	AW1502V-S-10P	13.50	16.30
11	AW1502V-S-11P	15.00	17.80
12	AW1502V-S-12P	16.50	19.30
13	AW1502V-S-13P	18.00	20.80
14	AW1502V-S-14P	19.50	22.30
15	AW1502V-S-15P	21.00	23.80

## 1.50mm Pitch 90° wafer-smt connector

WAFER

- Part NO:AW1502R-S-xP
- Material:Pin:Brass/Tin over Nickel
- Insulator:Nylon 6T, UL94V-0
- Mates with:AH1502 series Housing
- Color: Ivory



Ordering Information & Dimensions:

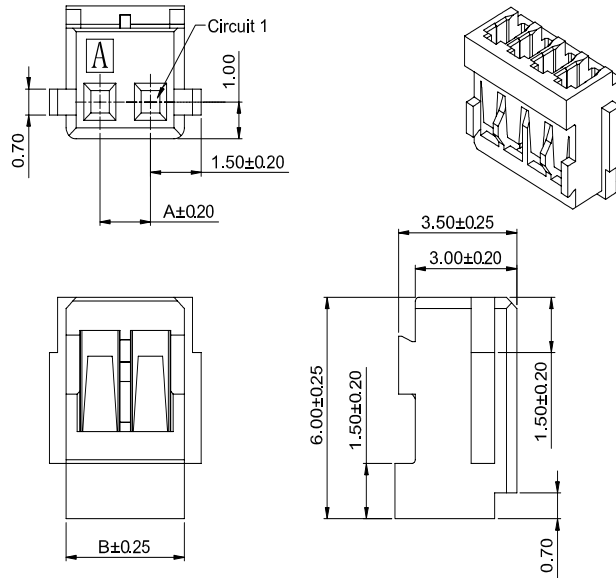
Poles	Part No.	Dimensions(mm)	
		A	B
02	AW1502R-S-02P	1.50	4.30
03	AW1502R-S-03P	3.00	5.80
04	AW1502R-S-04P	4.50	7.30
05	AW1502R-S-05P	6.00	8.80
06	AW1502R-S-06P	7.50	10.30
07	AW1502R-S-07P	9.00	11.80
08	AW1502R-S-08P	10.50	13.30
09	AW1502R-S-09P	12.00	14.80
10	AW1502R-S-10P	13.50	16.30
11	AW1502R-S-11P	15.00	17.80
12	AW1502R-S-12P	16.50	19.30
13	AW1502R-S-13P	18.00	20.80
14	AW1502R-S-14P	19.50	22.30
15	AW1502R-S-15P	21.00	23.80

Connectors Expert Around You

## 1.50mm Pitch housing connector

### HOUSING

- Part NO.:AH1502A-xP
- Suitable:AT1502T series Terminal
- Mates with:AW1502VA-IT-S series Wafer
- Material:Nylon 66,UL94V-0
- Color:White



Ordering Information & Dimensions:

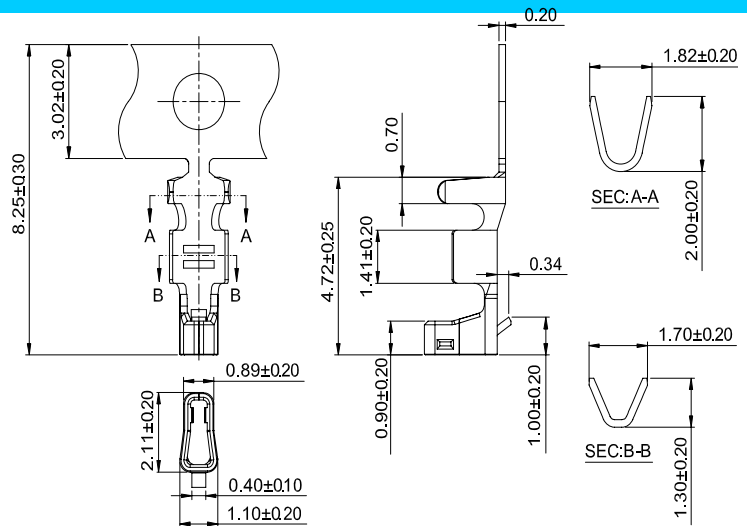
Poles	Part No.	Dimensions (mm)	
		A	B
02	AH1502A-02P	1.50	3.50
03	AH1502A-03P	3.00	5.00
04	AH1502A-04P	4.50	6.50
05	AH1502A-05P	6.00	8.00
06	AH1502A-06P	7.50	9.50
07	AH1502A-07P	9.00	11.00
08	AH1502A-08P	10.50	12.50
09	AH1502A-09P	12.00	14.00
10	AH1502A-10P	13.50	15.50
11	AH1502A-11P	15.00	17.00
12	AH1502A-12P	16.50	18.50
13	AH1502A-13P	18.00	20.00
14	AH1502A-14P	19.50	21.50
15	AH1502A-15P	21.00	23.00
16	AH1502A-16P	22.50	24.50
17	AH1502A-17P	24.00	26.00
18	AH1502A-18P	25.50	27.50
19	AH1502A-19P	27.00	29.00
20	AH1502A-20P	28.50	30.50

Wire to Board

## 1.50mm Pitch crimp terminal connector

### TERMINAL

- Part NO:AT1502T-xP-A
- Applicable wire:AWG#24-#28
- Material:Phosphor Bronze
- Finish:Tin Plated or Gold
- Used in AH1502A series Housing



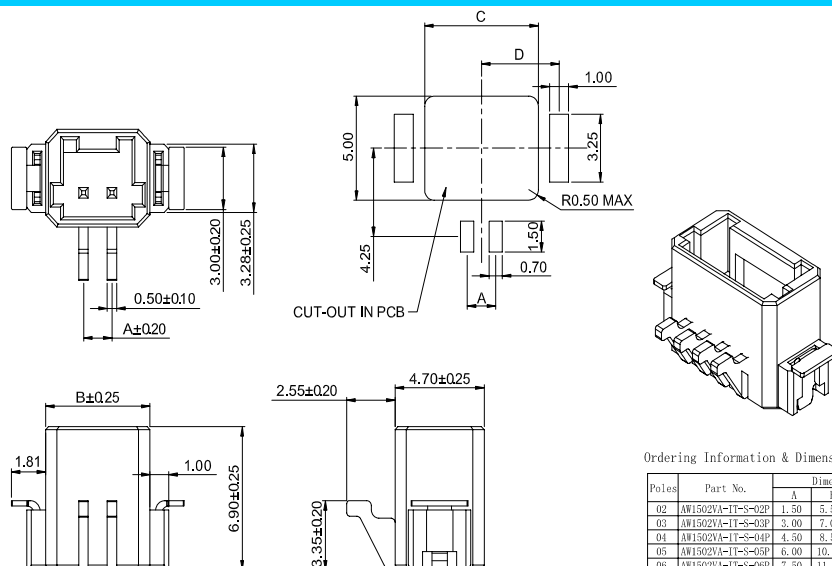
Ordering information & Specifications

Part NO.	Wire Range	Insulation O.D.	Material	Finish	Qty/reel
AT1502T-TP-A	AWG#24-#28	1.10mm(max)	Phosphor Bronze	Tin over Nickel	10,000 PCS
AT1502T-GP-A	AWG#24-#28	1.10mm(max)	Phosphor Bronze	Gold over Nickel	10,000 PCS

## 1.50mm Pitch thru board inverted smt 180° wafer

### WAFER

- Part NO:AW1502VA-IT-S-xP
- Material:Pin:Brass/Tin over Nickel
- Solder Tabs: Brass/Tin over Nickel
- Insulator:LCP, UL94V-0
- Mates with:AH1502A series Housing
- Color: Ivory



Ordering Information & Dimensions:

Poles	Part No.	Dimensions (mm)			
		A	B	C	D
02	AW1502VA-IT-S-02P	1.50	5.50	6.00	4.10
03	AW1502VA-IT-S-03P	3.00	7.00	7.50	4.85
04	AW1502VA-IT-S-04P	4.50	8.50	9.00	5.60
05	AW1502VA-IT-S-05P	6.00	10.00	10.50	6.35
06	AW1502VA-IT-S-06P	7.50	11.50	12.00	7.10