

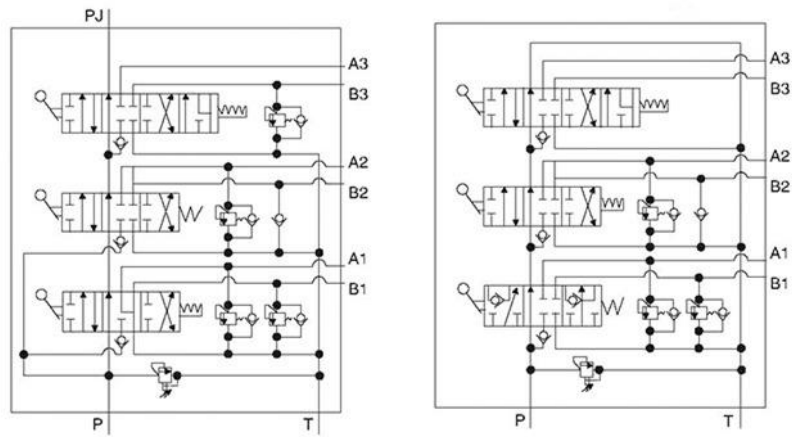
Model: ZL15-1

用途与特征/APPLICATIONS&FEATURES

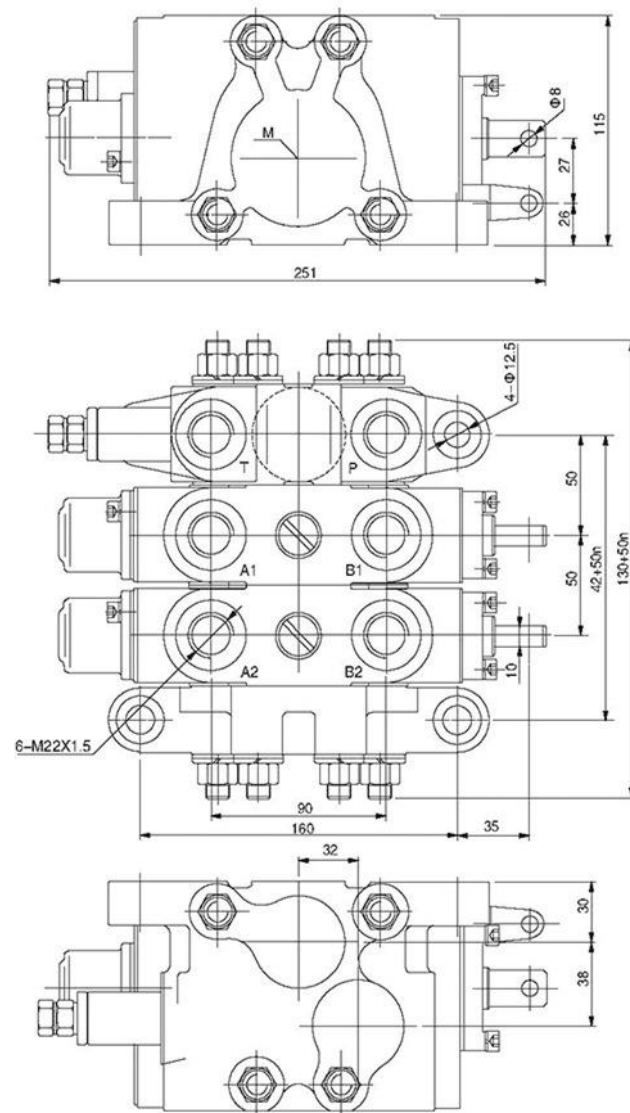
ZL- L15 series multiple directional control valve is assembled with check valve, safety valve, inlet body, oil-returning body and several pieces of inverting valves. It has such characteristics as compact structure, high working pressure, good performance, high reliability, etc. The circuit is parallel connection. There are many spool functions for the system. The positioning and returning modes of the valve handle include spring returning and ball locking. There is a check valve inside the valve plate in case of back flow. There is a overflow valve in the inlet valve plate to control the whole system pressure. Oil inlet valve has overflow valve to control the pressure of all system. The two ends of the inverting valve may be assembled with overloaded valve to meet different load requirement of different executive mechanism. The valve is widely used in such hydraulic systems of engineering machinery as forklift, environmental trucks, etc.



型号举例/MODEL EXAMPLES



外形安装连接尺寸/INSTALLING AND CONNECTING DIMENSIONS OF MOEEL



注: M为过桥油口连接尺寸,n表示多路换向阀连数片
 Note: M indicates the connecting dimension for interim valve port and n is the number of direction valve pieces.

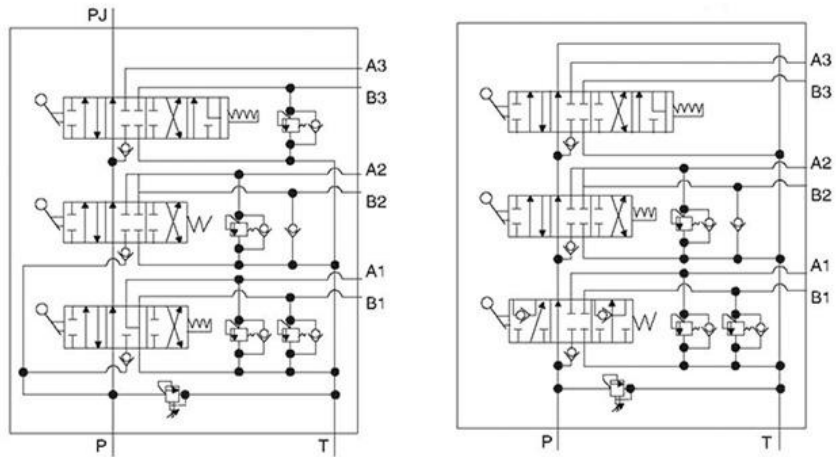
Model: ZL15-2

用途与特征/APPLICATIONS&FEATURES

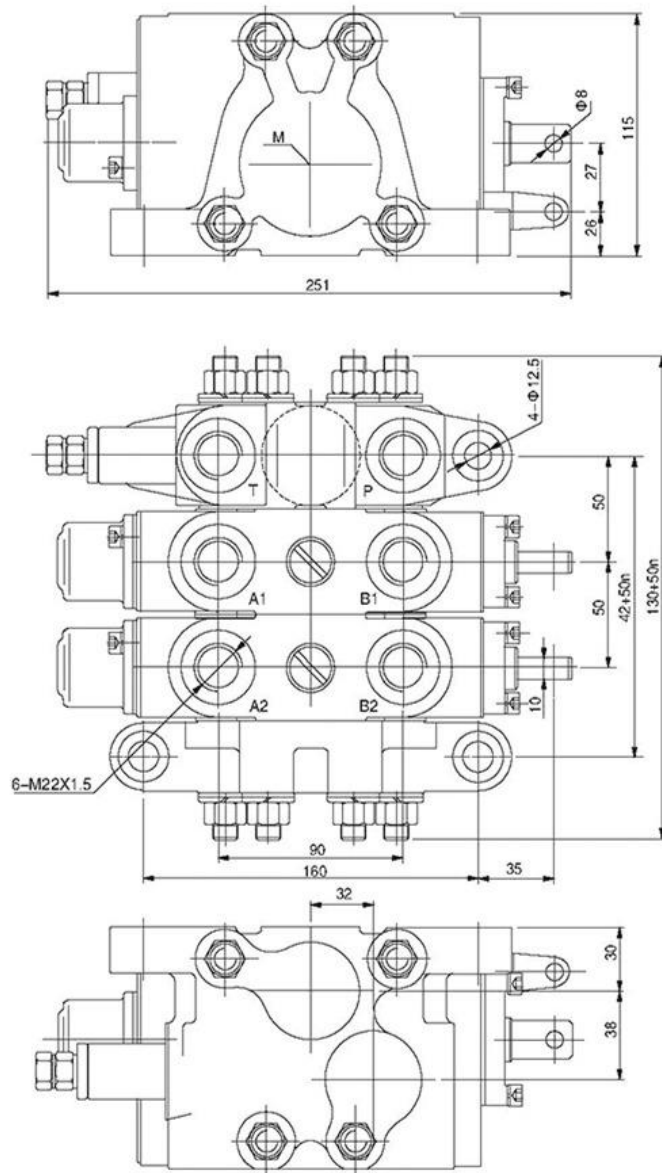
ZL- L15 series multiple directional control valve is assembled with check valve, safety valve, inlet body, oil-returning body and several pieces of inverting valves. It has such characteristics as compact structure, high working pressure, good performance, high reliability, etc. The circuit is parallel connection. There are many spool functions for the system. The positioning and returning modes of the valve handle include spring returning and ball locking. There is a check valve inside the valve plate in case of back flow. There is a overflow valve in the inlet valve plate to control the whole system pressure. Oil inlet valve has overflow valve to control the pressure of all system. The two ends of the inverting valve may be assembled with overloaded valve to meet different load requirement of different executive mechanism. The valve is widely used in such hydraulic systems of engineering machinery as forklift, environmental trucks, etc.



型号举例/MODEL EXAMPLES



外形安装连接尺寸/INSTALLING AND CONNECTING DIMENSIONS OF MOEEL



注: M为过桥油口连接尺寸,n表示多路换向阀连数片
 Note: M indicates the connecting dimension for interim valve port and n is the number of direction valve pieces.

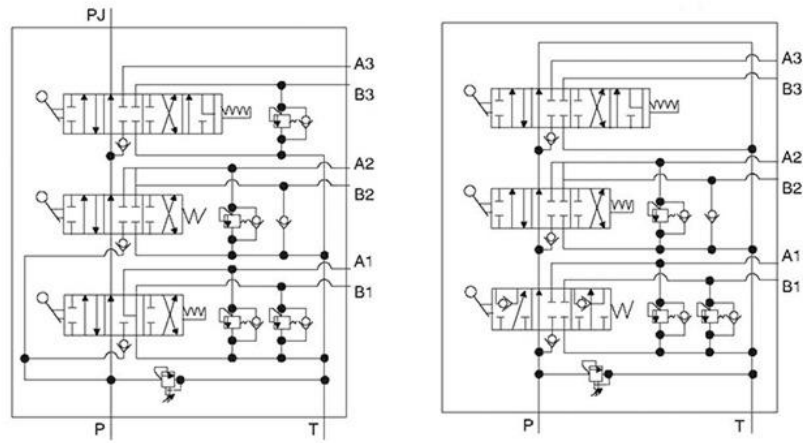
Model: ZL15-3

用途与特征/APPLICATIONS&FEATURES

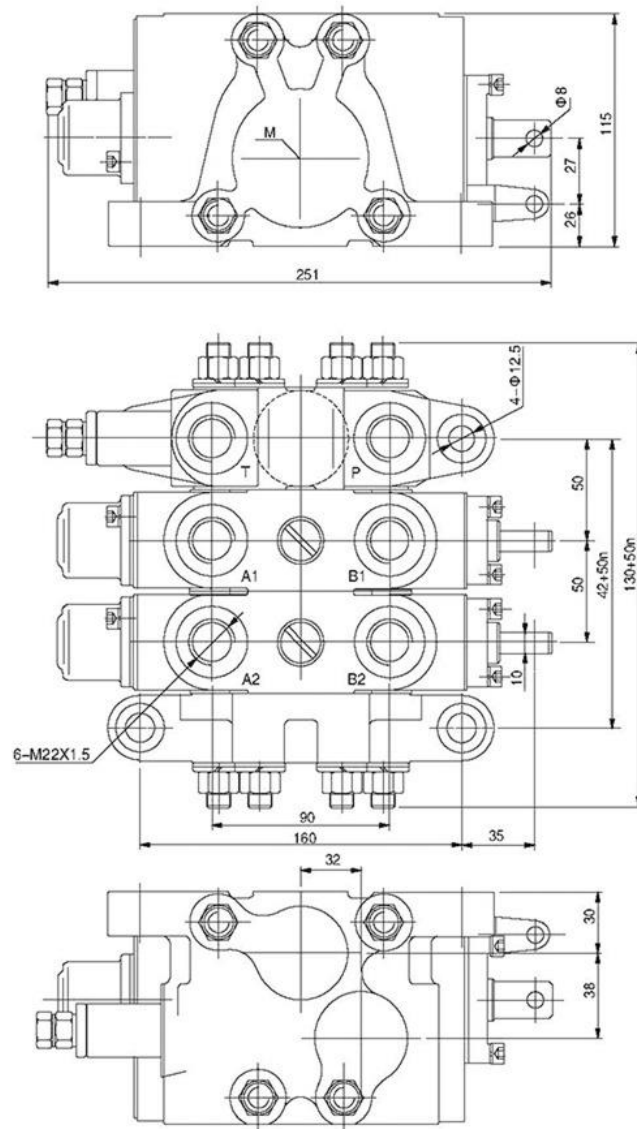
ZL- L15 series multiple directional control valve is assembled with check valve, safety valve, inlet body, oil-returning body and several pieces of inverting valves. It has such characteristics as compact structure, high working pressure, good performance, high reliability, etc. The circuit is parallel connection. There are many spool functions for the system. The positioning and returning modes of the valve handle include spring returning and ball locking. There is a check valve inside the valve plate in case of back flow. There is a overflow valve in the inlet valve plate to control the whole system pressure. Oil inlet valve has overflow valve to control the pressure of all system. The two ends of the inverting valve may be assembled with overloaded valve to meet different load requirement of different executive mechanism. The valve is widely used in such hydraulic systems of engineering machinery as forklift, environmental trucks, etc.



型号举例/MODEL EXAMPLES



外形安装连接尺寸/INSTALLING AND CONNECTING DIMENSIONS OF MOEEL



注：M为过桥油口连接尺寸，n表示多路换向阀连片数
 Note: M indicates the connecting dimension for interim valve port and n is the number of direction valve pieces.

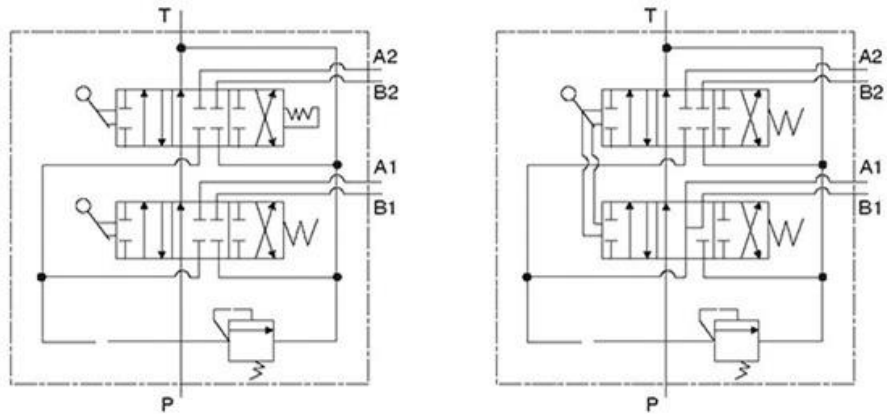
Model: ZS1-L18E-OT-10

用途与特征/APPLICATIONS&FEATURES

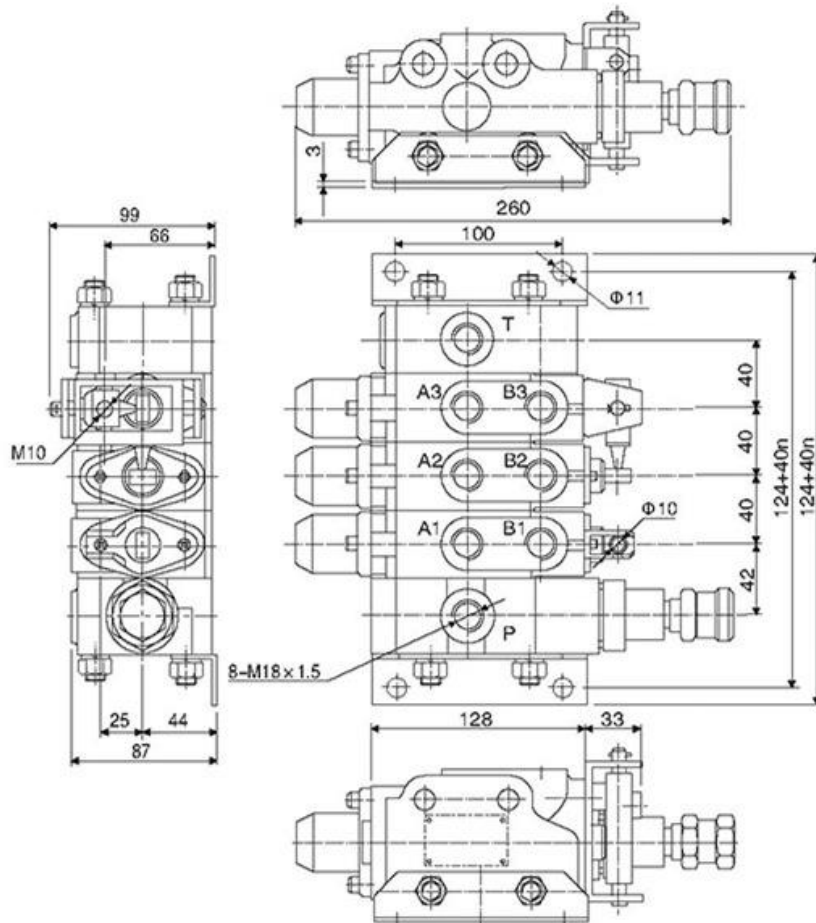
ZS1-L18E series multiple directional control valve is casted by oil inlet valve, oil return valve and directional control valve. It has such characteristics as tight structure, high working pressure and reliable working performance. The main characteristic is to change pilot safety valve into direct-acting safety valve in case of blocking and to improve the resistant-contamination. This kind of valve is widely used in engineering machinery, mining, light industry, environmental and agricultural machinery, such as forklift, loading trucks, excavators, cranes and road rollers. It's used to change flow direction and to achieve the integrated control over several executive mechanism.



型号举例/MODEL EXAMPLES



外形安装连接尺寸/INSTALLING AND CONNECTING DIMENSIONS OF MOEEL



注：n表示多路换向阀连数片
 Note: n is the number of direction valve pieces.

Model: ZS1-L18E-OT-20

用途与特征/APPLICATIONS&FEATURES

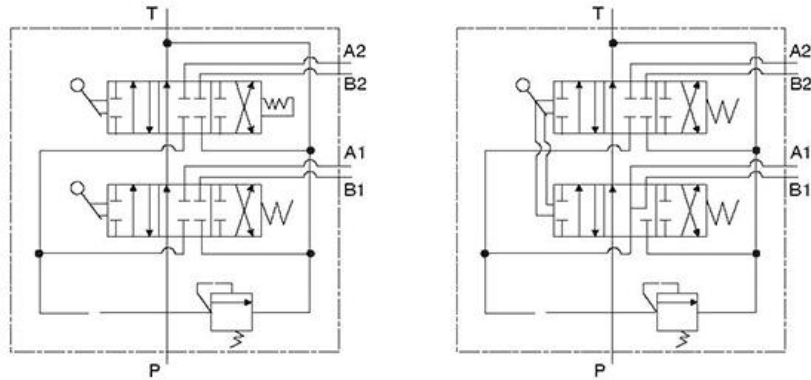
ZS1-L18E series multiple directional control valve is casted by oil inlet valve, oil return valve and directional control valve. It has such characteristics as tight structure, high working pressure and reliable working performance. The main characteristic is to change pilot safety valve into direct-acting safety valve in case of blocking and to improve the resistant-contamination. This kind of valve is widely used in engineering machinery, mining, light industry, environmental and agricultural machinery, such as forklift, loading trucks, excavators, cranes and road rollers. It's used to change flow direction and to achieve the integrated control over several executive mechanism.



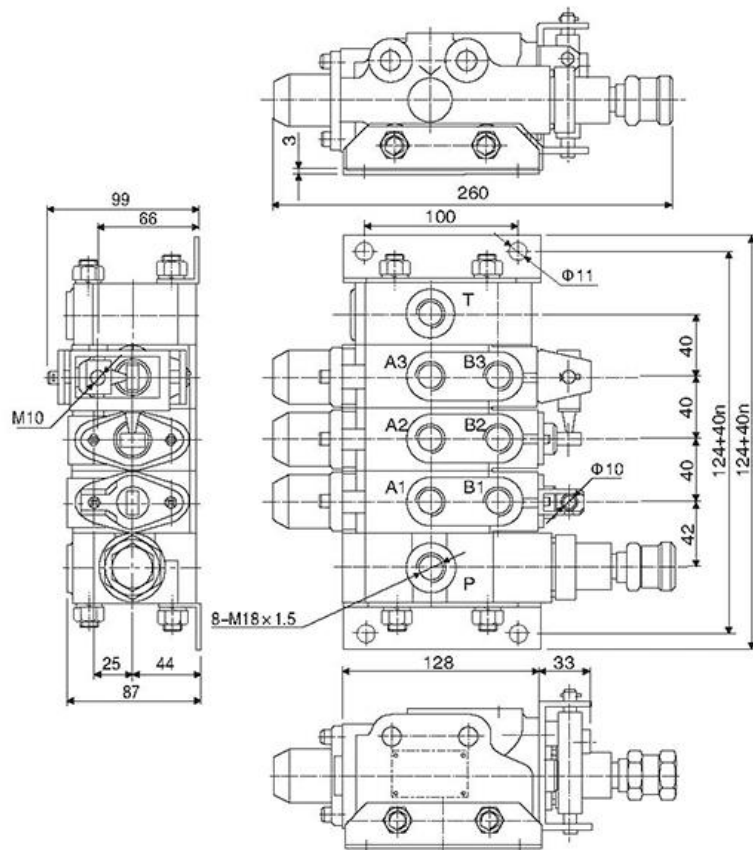
用途与特征/APPLICATIONS&FEATURES

ZS1-L18E series multiple directional control valve is casted by oil inlet valve, oil return valve and directional control valve. It has such characteristics as tight structure, high working pressure and reliable working performance. The main characteristic is to change pilot safety valve into direct-acting safety valve in case of blocking and to improve the resistant-contamination. This kind of valve is widely used in engineering machinery, mining, light industry, environmental and agricultural machinery, such as forklift, loading trucks, excavators, cranes and road rollers. It's used to change flow direction and to achieve the integrated control over several executive mechanism.

型号举例/MODEL EXAMPLES



外形安装连接尺寸/INSTALLING AND CONNECTING DIMENSIONS OF MOOEL

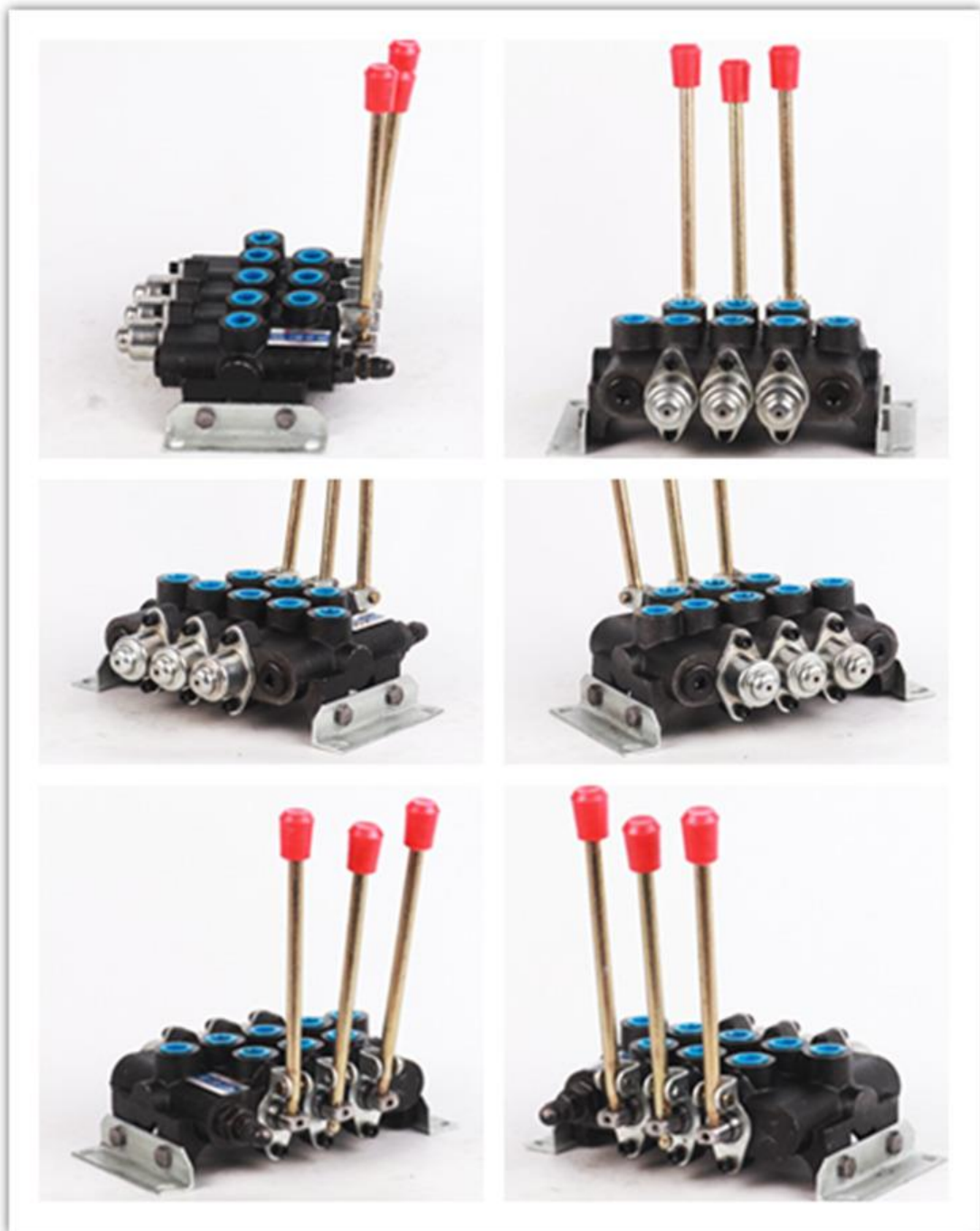


注：n表示多路换向阀连数片
Note:n is the number of direction valve pieces.

Model: ZS1-L18E-OT-30

用途与特征/APPLICATIONS&FEATURES

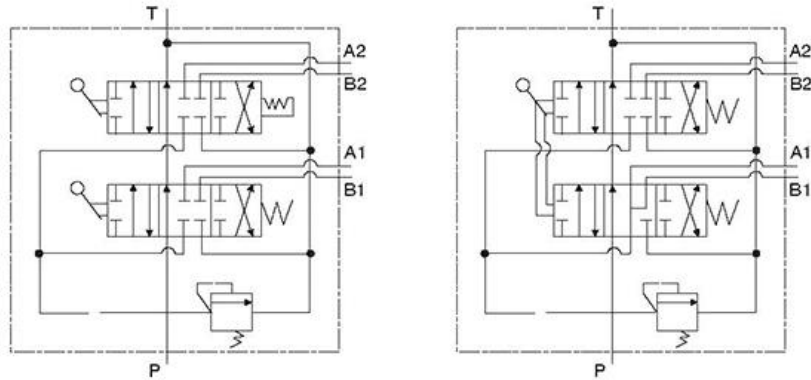
ZS1-L18E series multiple directional control valve is casted by oil inlet valve, oil return valve and directional control valve. It has such characteristics as tight structure, high working pressure and reliable working performance. The main characteristic is to change pilot safety valve into direct-acting safety valve in case of blocking and to improve the resistant-contamination. This kind of valve is widely used in engineering machinery, mining, light industry, environmental and agricultural machinery, such as forklift, loading trucks, excavators, cranes and road rollers. It's used to change flow direction and to achieve the integrated control over several executive mechanism.



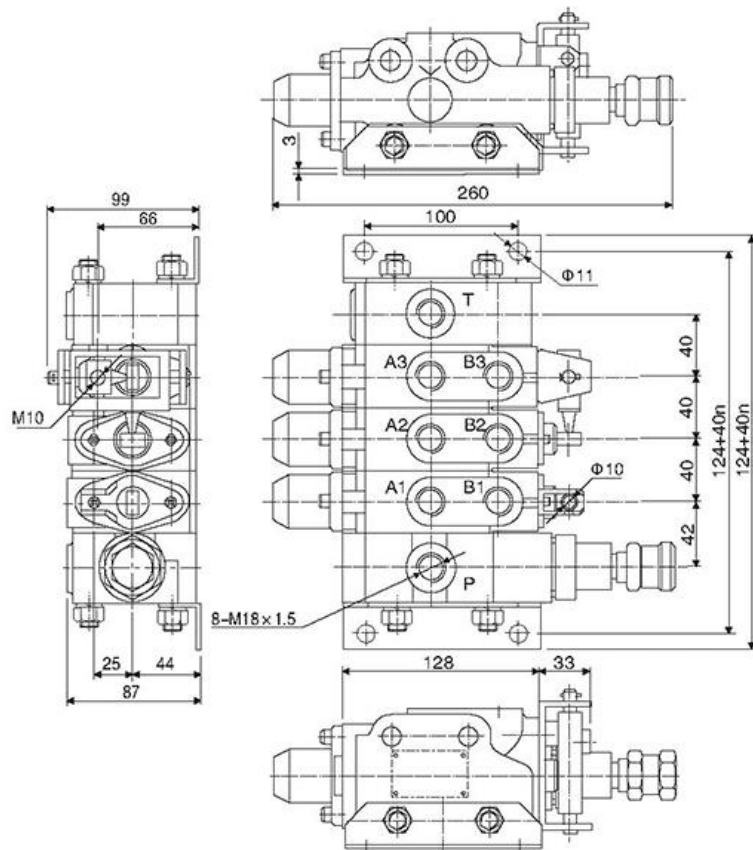
用途与特征/APPLICATIONS&FEATURES

ZS1-L18E series multiple directional control valve is casted by oil inlet valve, oil return valve and directional control valve. It has such characteristics as tight structure, high working pressure and reliable working performance. The main characteristic is to change pilot safety valve into direct-acting safety valve in case of blocking and to improve the resistant-contamination. This kind of valve is widely used in engineering machinery, mining, light industry, environmental and agricultural machinery, such as forklift, loading trucks, excavators, cranes and road rollers. It's used to change flow direction and to achieve the integrated control over several executive mechanism.

型号举例/MODEL EXAMPLES



外形安装连接尺寸/INSTALLING AND CONNECTING DIMENSIONS OF MOOEL

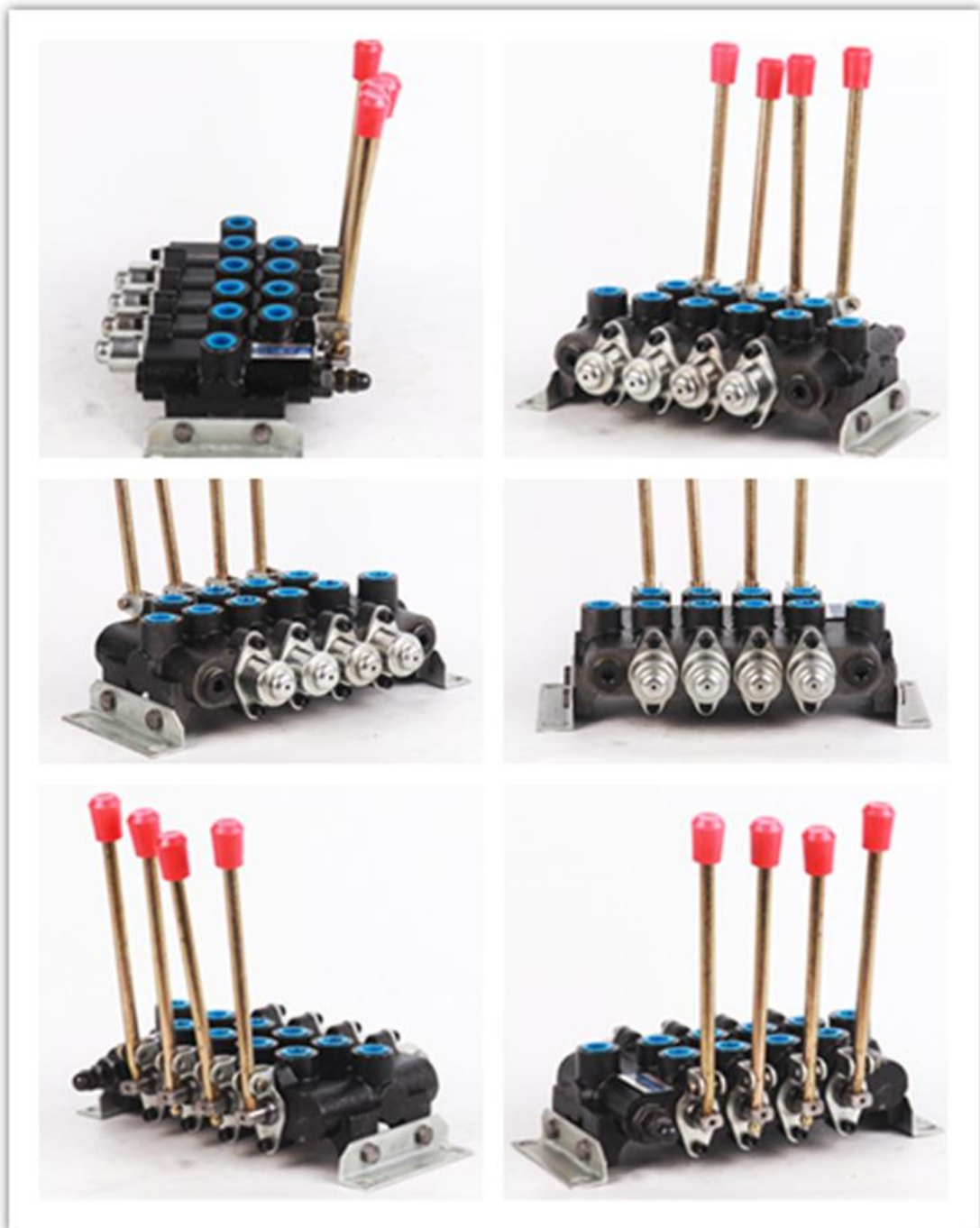


注：n表示多路换向阀连数片
Note:n is the number of direction valve pieces.

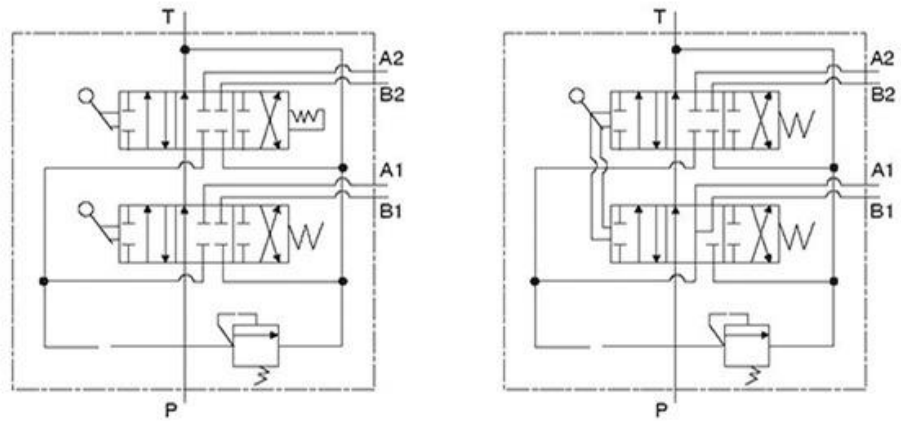
Model: ZS1-L18E-OT-40

用途与特征/APPLICATIONS&FEATURES

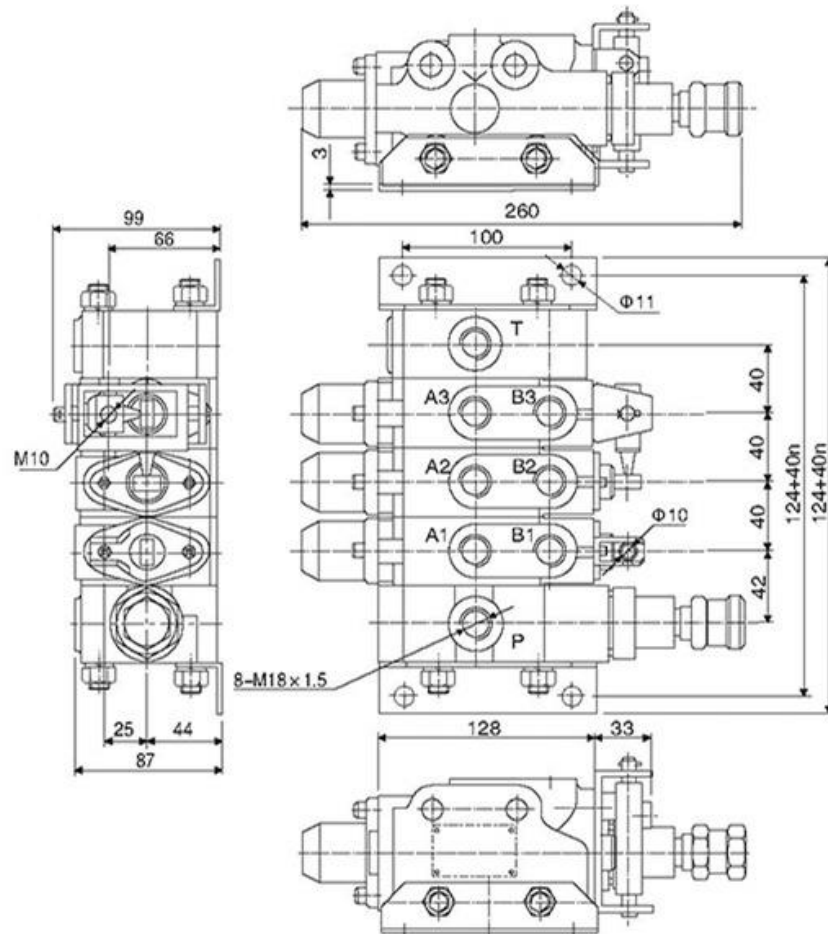
ZS1-L18E series multiple directional control valve is casted by oil inlet valve, oil return valve and directional control valve. It has such characteristics as tight structure, high working pressure and reliable working performance. The main characteristic is to change pilot safety valve into direct-acting safety valve in case of blocking and to improve the resistant-contamination. This kind of valve is widely used in engineering machinery, mining, light industry, environmental and agricultural machinery, such as forklift, loading trucks, excavators, cranes and road rollers. It's used to change flow direction and to achieve the integrated control over several executive mechanism.



型号举例/MODEL EXAMPLES



外形安装连接尺寸/INSTALLING AND CONNECTING DIMENSIONS OF MOEEL

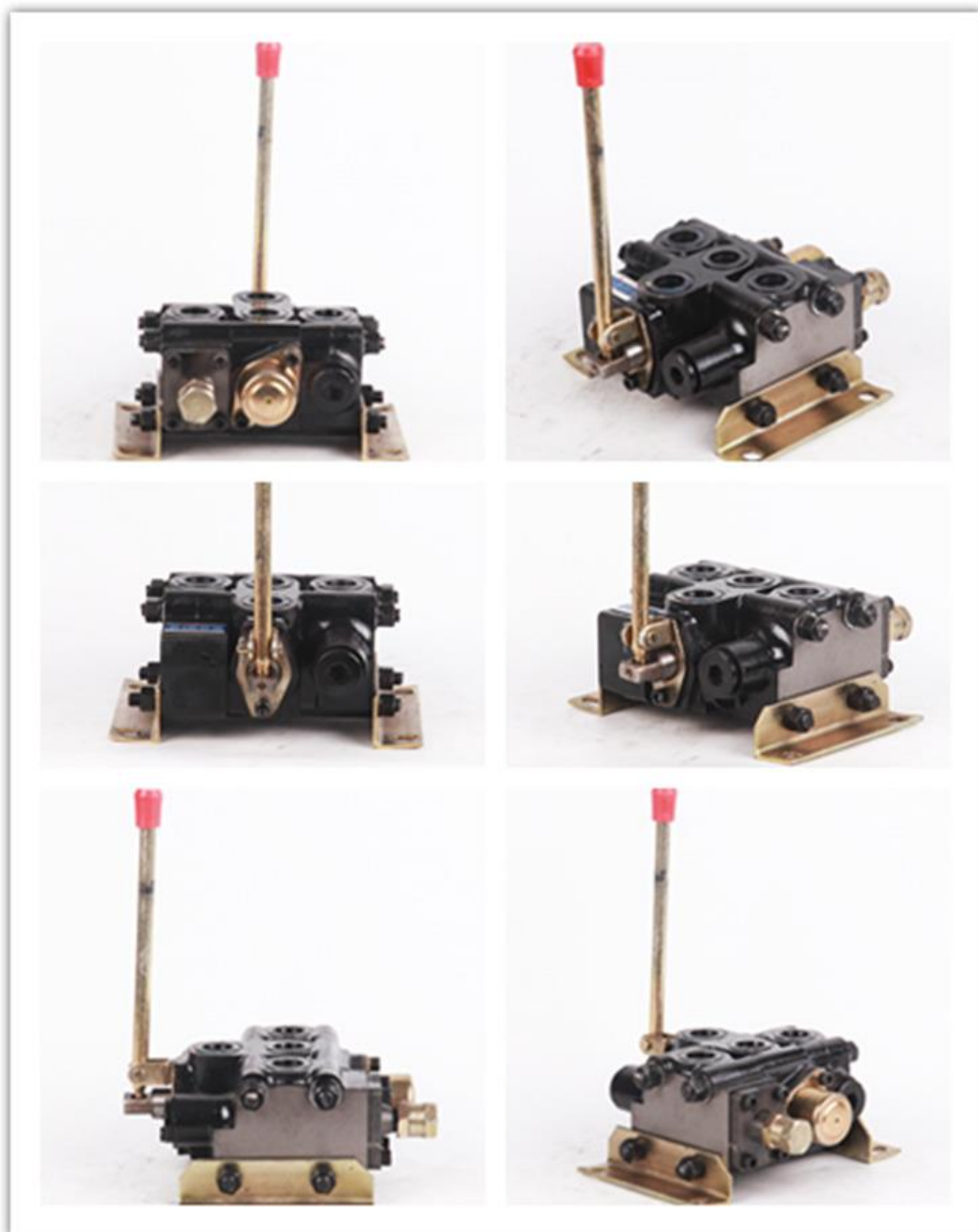


注：n表示多路换向阀连接数片
 Note: n is the number of direction valve pieces.

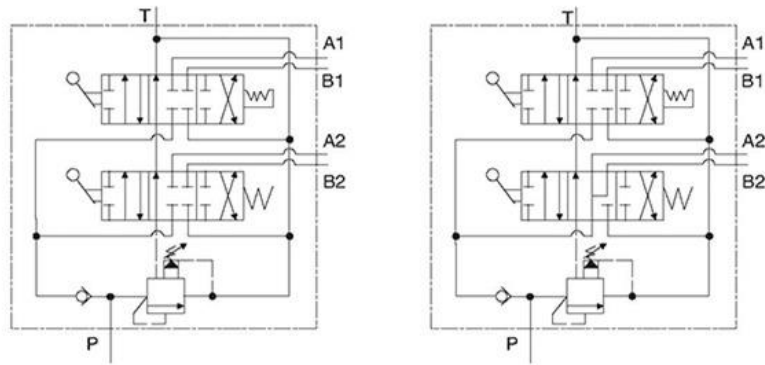
Model: ZS-L20-YT-10

用途与特征/APPLICATIONS&FEATURES

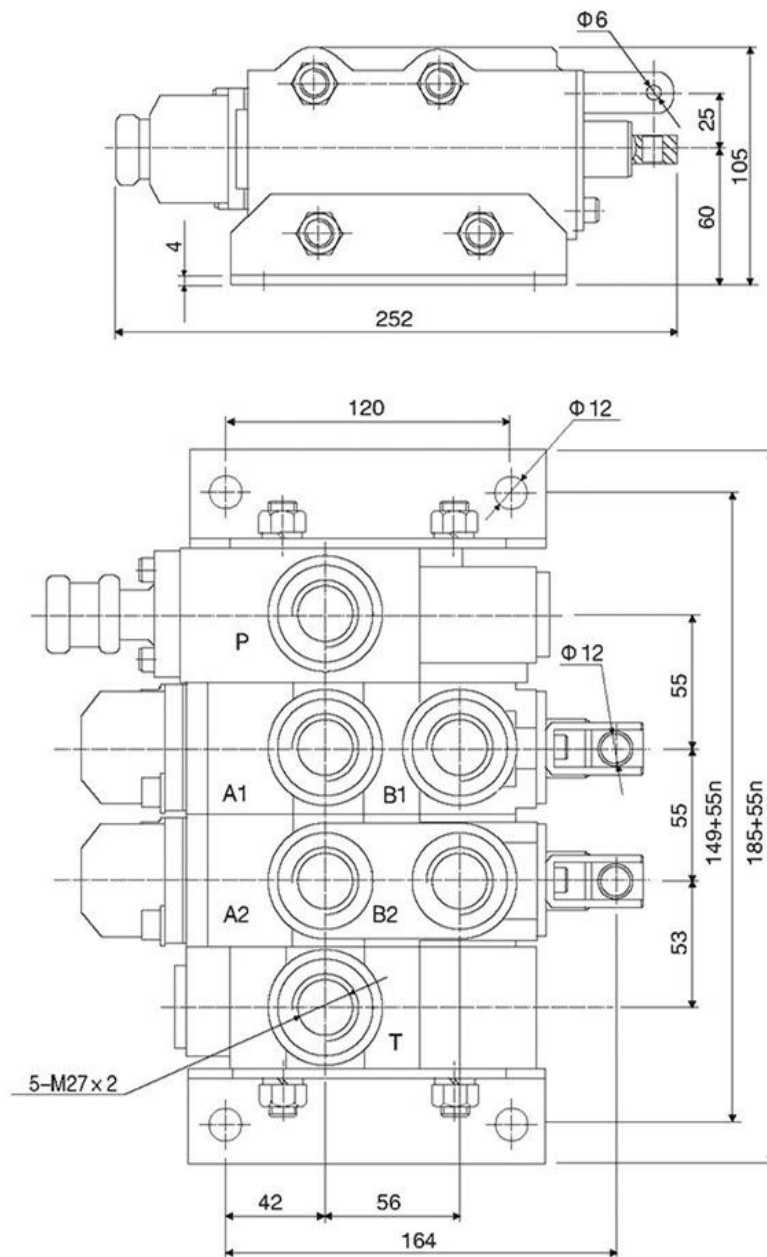
ZS series multiple directional control valves consist of pilot operated relief and check valve with parallel oil circuit. Its features are simple in structure, small in leakage and good in stopping property of relief valve.



型号举例/MODEL EXAMPLES



外形安装连接尺寸/INSTALLING AND CONNECTING DIMENSIONS OF MOOEL

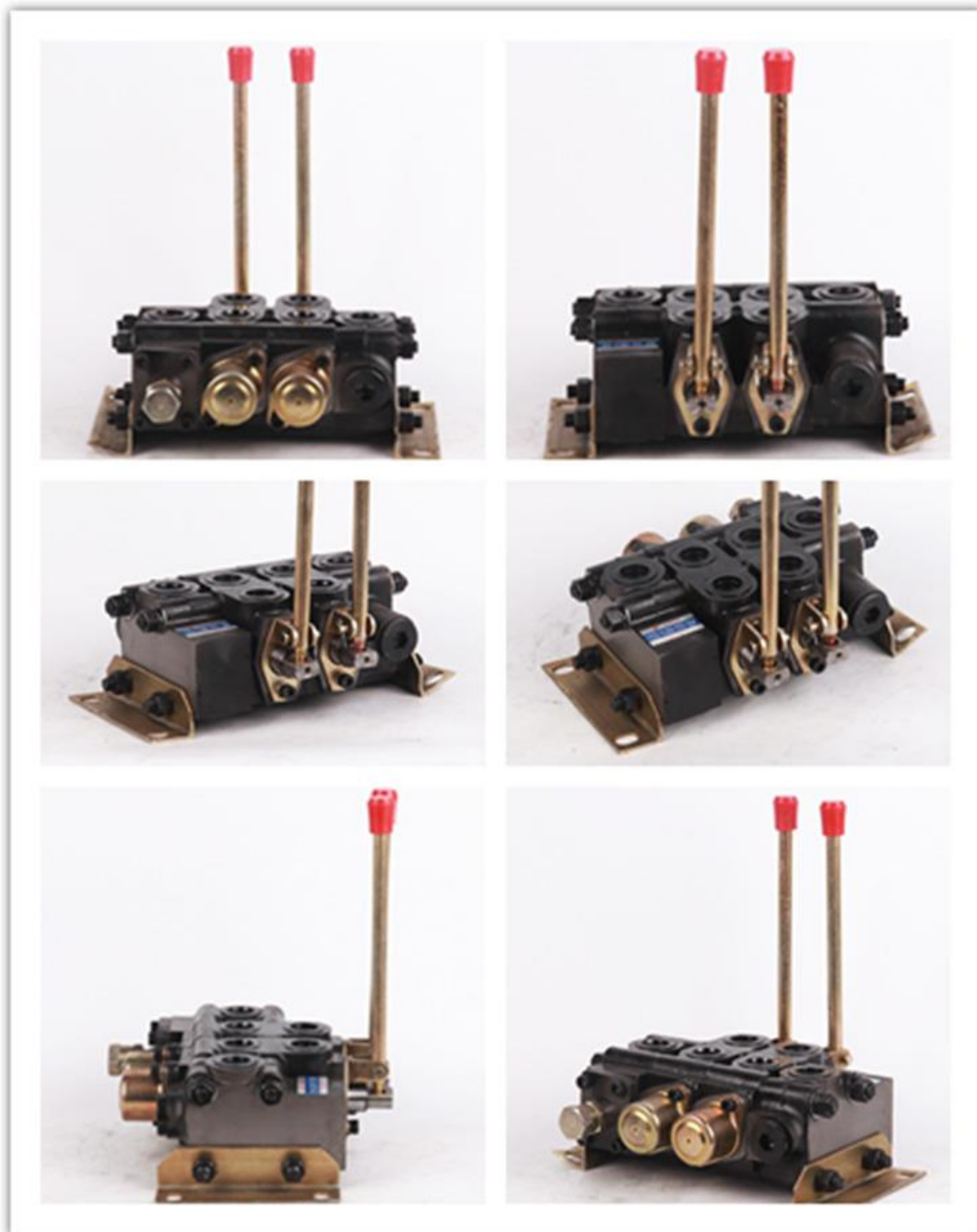


注：n表示多路换向阀连数片
Note:n is the number of direction valve pieces.

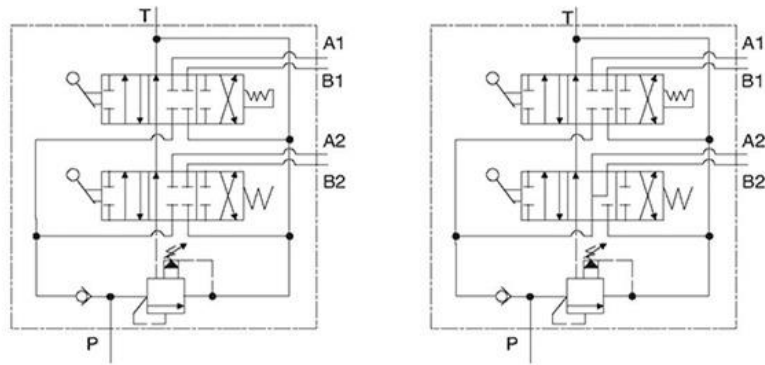
Model: ZS-L20-YT-20

用途与特征/APPLICATIONS&FEATURES

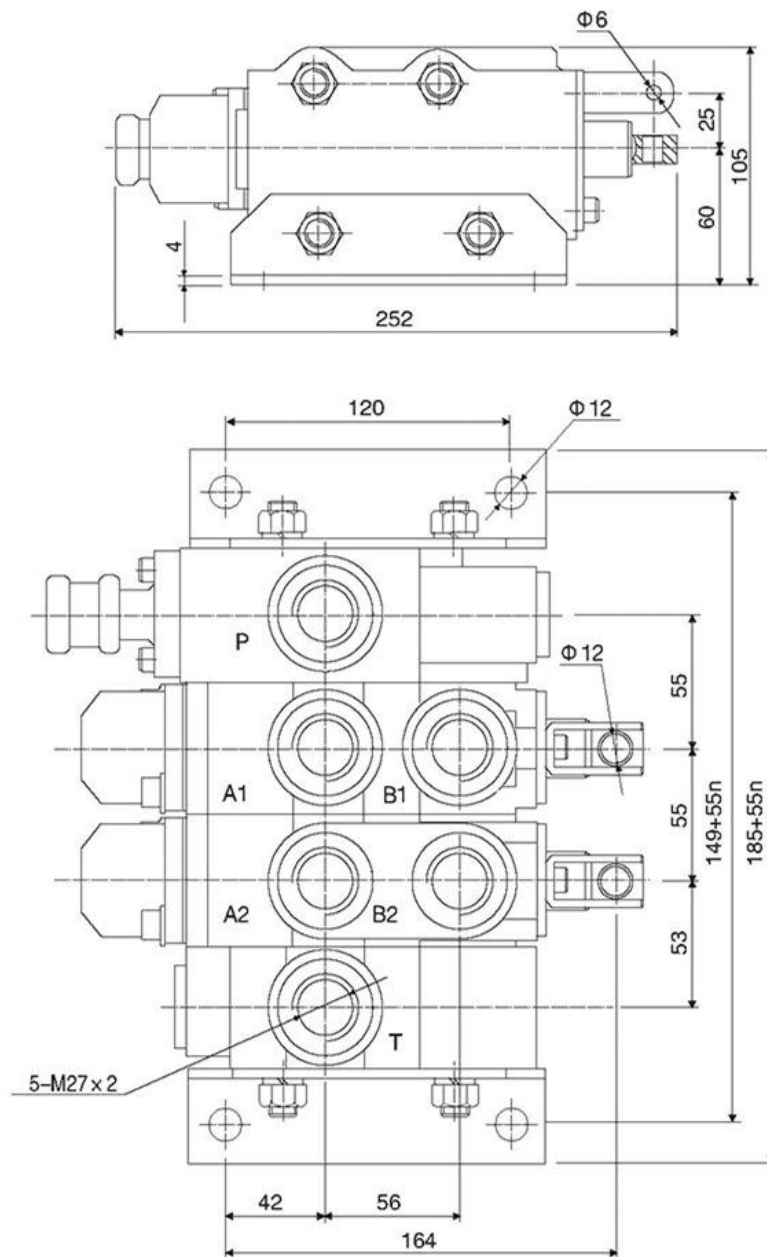
ZS series multiple directional control valves consist of pilot operated relief and check valve with parallel oil circuit. Its features are simple in structure, small in leakage and good in stopping property of relief valve.



型号举例/MODEL EXAMPLES



外形安装连接尺寸/INSTALLING AND CONNECTING DIMENSIONS OF MOEEL

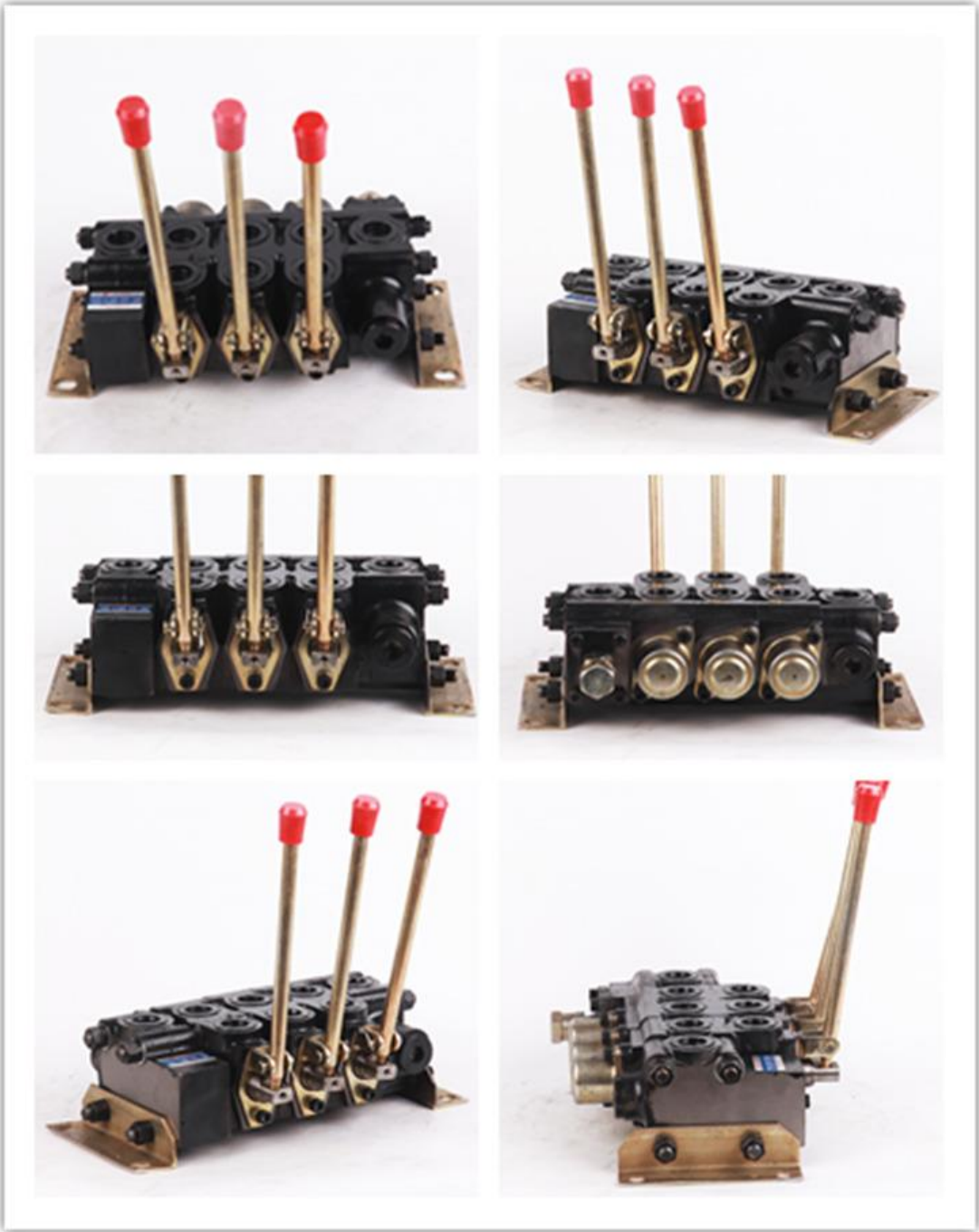


注：n表示多路换向阀连数片
Note:n is the number of direction valve pieces.

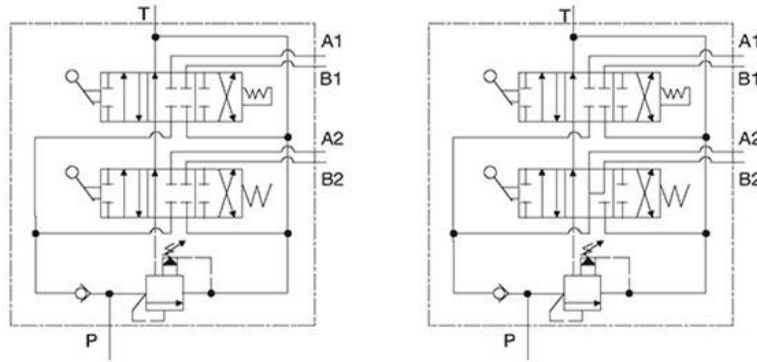
Model: ZS-L20-YT-30

用途与特征/APPLICATIONS&FEATURES

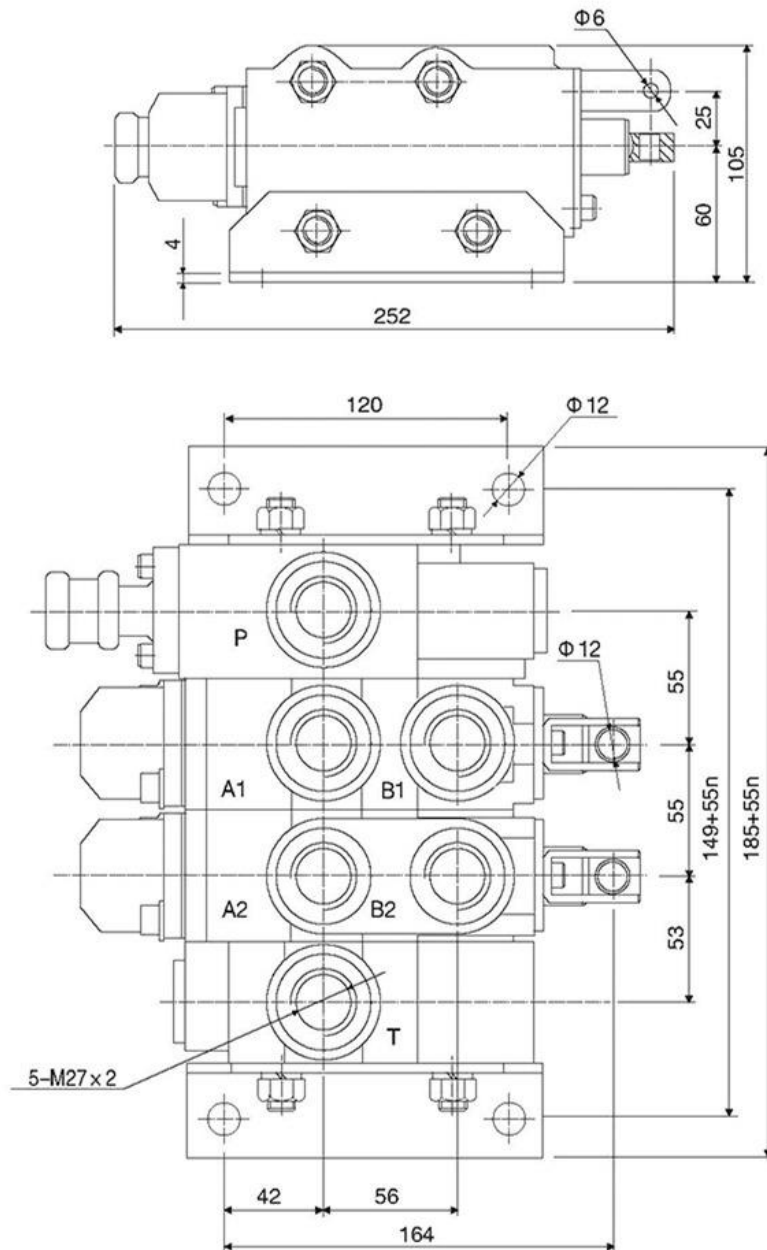
ZS series multiple directional control valves consist of pilot operated relief and check valve with parallel oil circuit. Its features are simple in structure, small in leakage and good in stopping property of relief valve.



型号举例/MODEL EXAMPLES



外形安装连接尺寸/INSTALLING AND CONNECTING DIMENSIONS OF MOEEL

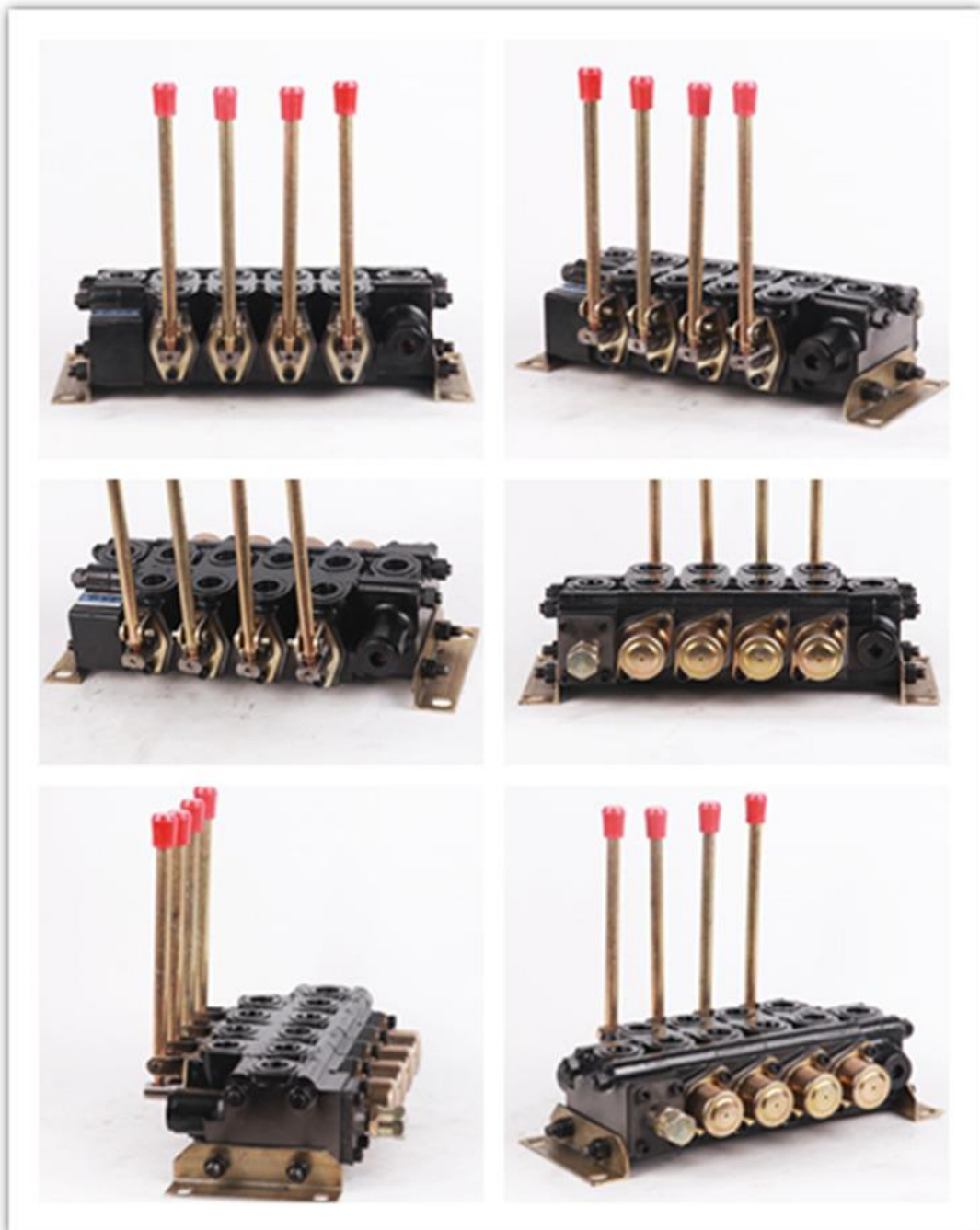


注: n表示多路换向阀连数片
 Note: n is the number of direction valve pieces.

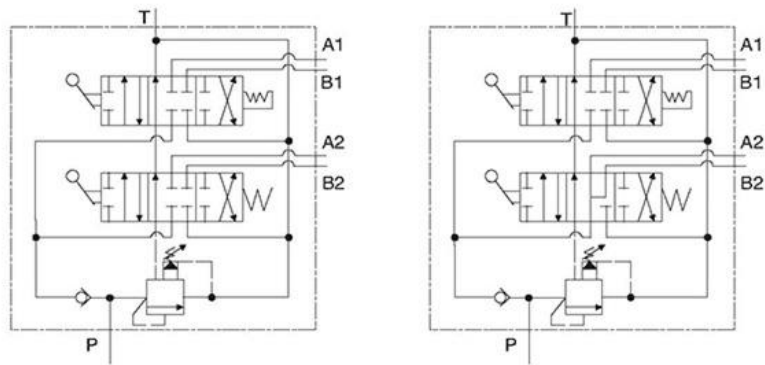
Model: ZS-L20-YT-40

用途与特征/APPLICATIONS&FEATURES

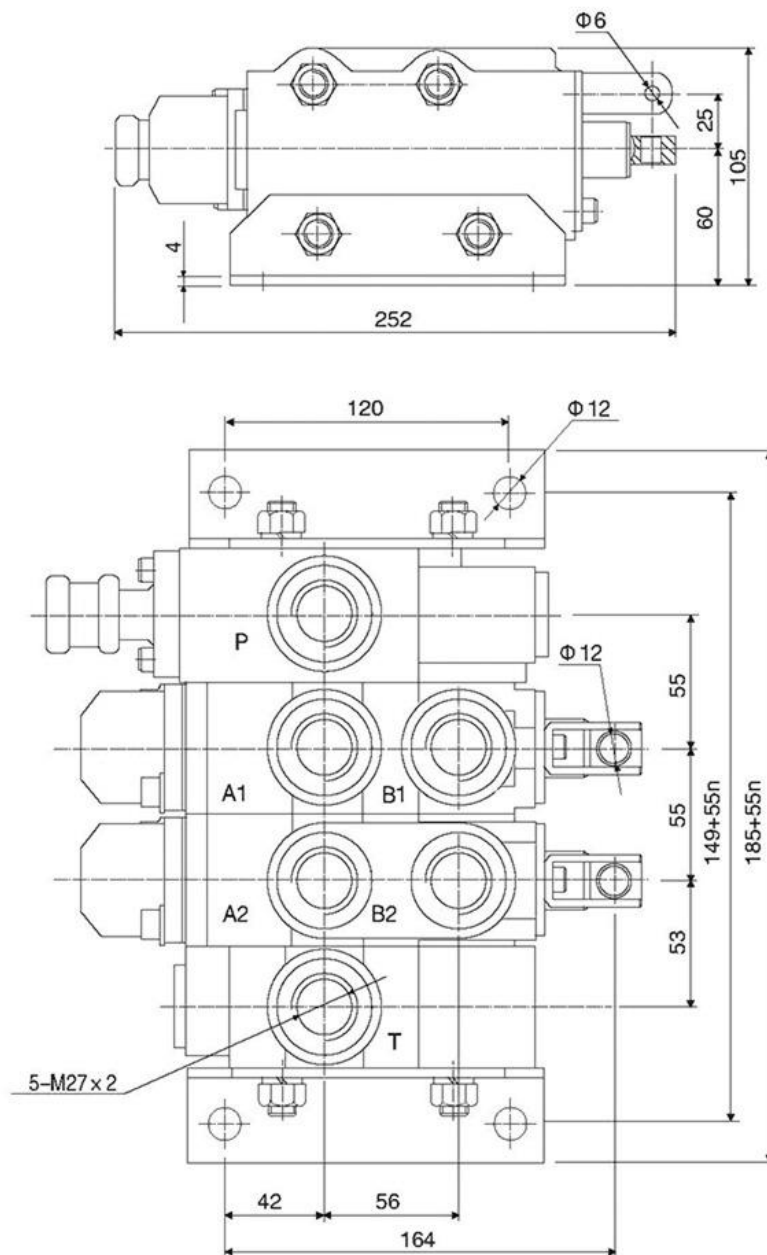
ZS series multiple directional control valves consist of pilot operated relief and check valve with parallel oil circuit. Its features are simple in structure, small in leakage and good in stopping property of relief valve.



型号举例/MODEL EXAMPLES



外形安装连接尺寸/INSTALLING AND CONNECTING DIMENSIONS OF MOEEL



注: n表示多路换向阀连数片
Note: n is the number of direction valve pieces.