

FULL-HYDRAULIC VIBRATORY ROLLER

SR18

Ready to crush even tougher jobs

- ▶ Engine model: Cummins 6BT5.9
- ▶ Rated power: 132 kW/2500 rpm
- ▶ Operating weight: 18.0 t

Product features

A heavy, fully hydraulic vibratory roller that weighs in at over 18.0 tons, the SR18 uses its weight and muscular vibration force to get your tougher jobs done. With weight and power plus a fully enclosed cab with optional AC, ergonomic control system, suspension seat and hydraulically articulated steering, your operators will line up to drive the SR18. Powered by a Cummins 6BT5.9 engine.



shantui e-shop

SHANTUI

VALUE THAT WORKS

Shantui Construction Machinery Co., Ltd.

ADDRESS:
No. 58, G327 Highway
Jining City, Shandong, CHINA

TEL: +86-537-2909369
FAX: +86-537-2311219
EMAIL: trade@shantui.com






FULL-HYDRAULIC VIBRATORY ROLLER

SR18

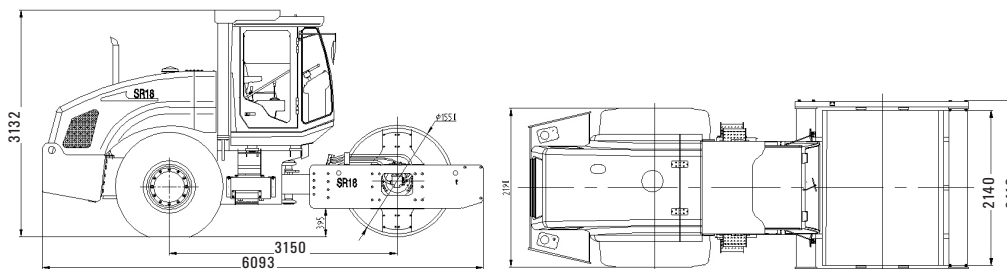
Technical specifications:

Overall length: 6093 mm	Minimum turning radius: 5800 mm
Overall width: 2410 mm	Steering angle (Grad): ±36°
Overall height: 3132 mm	Oscillating angle (Grad): ±12°

SR18

WEIGHT AND DIMENSIONS		MODEL:	SR18
	Weights	Operating weight	18000 kg
		Axle load, drum	11350 kg
		Axle load, wheel	6650 kg
		Static linear load (at drum)	530 N/cm
	Drum and Tires	Maximum working width	2140 mm
		Drum diameter	1550 mm
		Drum shell thickness	40 mm
		Number of padfeet	–
	Height of the padfoot	–	
	Tire size	23.1-26-12PR	
VIBRATORY SYSTEM		Frequency	High amplitude 29 Hz Low amplitude 33 Hz
	Nominal amplitude	High	1.75 mm
		Low	0.95 mm
Centrifugal force	Maximum	310 kN	
	Minimum	215 kN	
DRIVE TRAIN		Forward speed	I 0~5.6 km/h II 0~7.1 km/h III 0~8.7 km/h IV 0~13.5 km/h
	Reverse speed	I	0~5.6 km/h
		II	0~7.1 km/h
		III	0~8.7 km/h
		IV	0~13.5 km/h
	Maximum climbing ability	45%	
	Drive system	Hydrostatic	
POWER TRAIN		Make & model	Cummins 6BT5.9
	Type	Turbocharged	
	Fuel	Diesel	
	Fuel capacity	265 L	
	Cool	Water	
	Number of cylinders	6	
	Rated power	132 kW	
	Rated speed	2500 rpm	
CABIN & CONTROLS		Electrical system	DC, negative ground 24 V Alternator 28 V, 45 A Batteries –
	Brakes	Service brake	Hydrostatic
		Parking brake	Spring-loaded/mechanical
Steering	Steering system	Oscillating, articulating	
	Steering method	Hydrostatic	

OVERALL DIMENSIONS



▶ THE SPECIFICATIONS ARE SUBJECT TO CHANGE WITHOUT NOTICE. THE PICTURES MAY INCLUDE OPTIONS. THE ACTUAL COLOR & APPEARANCE OF THE PRODUCT MAY DIFFER FROM WHAT IS SHOWN.