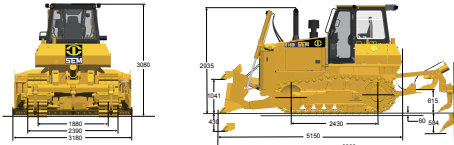
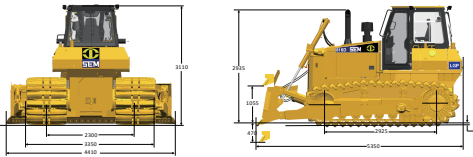


Dimensions

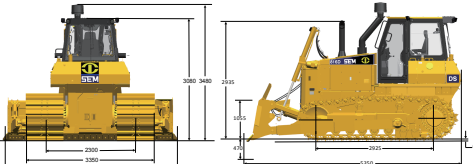
SEM816D



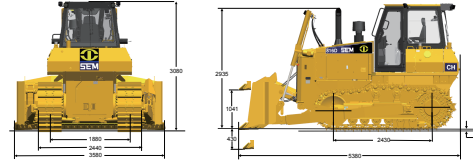
SEM816D LGP



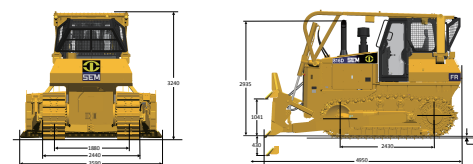
SEM816D CH



SEM816D DS



SEM816D FR



Main Specification

Model	SEM816D	SEM816D LGP	SEM816D DS	SEM816D CH	SEM816D FR
Operating Weight	19,200kg	19,400kg	19,700kg	17,100kg	19,500kg
Ground Pressure	66 kPa	31 kPa	34 kPa	61 kPa	66 kPa
Ground Clearance	410mm	410mm	410mm	410mm	410mm
Max Slope	30°	30°	30°	30°	30°
Engine					
Model	WD10017BE-25	WD10017BE-25	WD10017BE-25	WD10017BE-25	WD10017BE-25
Rated Power	131kW	131kW	131kW	131kW	131kW
Working Tool					
Blade Type	SU	S	L GP	L	SU Forestry
Blade Capacity	4.3m³	3.6m³	3.4m³	3.4m³	6m³
Blade Width	3,180mm	3,690mm	4,410mm	3,500mm	3,180mm
Blade Height	1,240mm	1,150mm	1,000mm	1,000mm	1,000mm
Max. Blade Digging Depth	430mm	430mm	470mm	430mm	430mm
Max. Blade Lift Ground Clearance	1,041mm	1,041mm	1,050mm	1,041mm	1,041mm
Max. Output Torque	290kN	290kN	290kN	290kN	290kN
Maximum Digging Depth Of Ripper	584mm	/	/	584mm	584mm
Maximum Clearance Under Rip	615mm	/	/	615mm	615mm
Powertrain					
Travel	4x4-path, closed loop, electronically controlled hydrostatic drive system				
Travel Speed-F/R	Infinitely variable speeds 0-16 km/h				
Steering & Brake	Hydrostatic steering, wet/multi-disc brake				
Minimum Steering Radius	3,610mm	3,140mm	3,140mm	3,110mm	3,610mm
Undercarriage					
Track Shoe Width-Single	510mm	/	500mm	500mm	500mm
Track Shoe Width-APEX	/	1,000mm	900mm	/	/
Track Shoe Quantity	/	/	42	37	37
Length Of Track On Ground	2,430mm	2,825mm	2,825mm	2,430mm	2,430mm
Track Gauge	1,880mm	2,300mm	2,300mm	1,880mm	1,880mm
Track Roller Quantity	7	7	7	7	7
Catenary Roller Quantity	2	2	2	2	2
Hydraulic System					
Type	center coaxial, pilot control				
Element Hydraulic System Pressure	18 MPa				
Service Retail Capacities					
Fuel Tank	300L	300L	300L	300L	300L
Cooling System	24L	24L	24L	24L	24L
Engine Crankcase	24L	24L	24L	24L	24L
Fuel Filter (each side)	24L	24L	24L	24L	24L
Hydraulic Tank	140L	140L	140L	140L	140L
Post Drain Cap (each side)	1.2L	1.2L	1.2L	1.2L	1.2L

Optional Accessories

S/C	SEM816D	SEM816D LGP	SEM816D DS	SEM816D CH	SEM816D FR
6-C Steering Joystick - N/A	-	-	-	-	-
Wiper (each side)	S	-	-	-	-
Seatbelt	-	-	S	-	-
Hydro. Air Cleaner	-	-	-	O	-
SU Blade	S	-	-	-	-
L Blade	-	-	-	-	-
S Blade	-	-	-	-	-
LGP Blade	O	S	-	-	-
SU Forestry Blade	-	-	-	-	S
Wiper	-	-	-	-	-
Rear Ripper w/ Teeth	-	-	-	O	O
SU Shoe 410mm	-	-	-	-	O
SU Shoe 500mm	-	-	-	-	S
APEX Shoe 1000mm	-	-	-	-	S
APEX Shoe 900mm	-	-	-	-	S
Catenary roller	-	-	S	-	-
Track roller (one side 6 units)	-	-	S	-	-
Track roller (one side 7 units)	-	-	S	-	-
Rear Powerwin	-	-	S	-	-
Steer PWS	-	-	S	-	-
Blade	-	-	S	-	-
Product link	-	-	S	-	-
Diagnosable speed display	-	-	S	-	-
USA Alternator	-	-	S	-	-
12V Transceiver	-	-	S	-	-
LED	-	-	O	-	-
330 Cap	-	-	S	-	-
Seat belt	-	-	S	-	-
Capacity	-	-	S	-	-
Steel Meshed Wheel Glass	-	-	-	O	-
HYAC	-	-	O	-	-
Rear brace	-	-	S	-	-
Lane Box	-	-	S	-	-
Carb. Heater	-	-	S	-	-
Summer Hood	-	-	S	-	-
Front Grille	-	-	S	-	-
Door stopper	-	-	O	-	-
ROPS/FAO	-	-	O	-	-
Shower and Screen Quants	-	-	-	-	S
Rear Blade	-	-	-	-	S
Cold Start/Preheat gas heat 10C ~ 25C	-	-	-	-	O
Cold Start/Preheat water heat 25C ~ 40C	-	-	-	-	O

Caterpillar (Qingzhou) Ltd. Address: No.12999 Nanshan Road,Caterpillar Industrial Park, Qingzhou City,Shandong Province, Zip Code: 262500 P.R.China
 © 2017 Caterpillar (Qingzhou) Ltd. All Rights Reserved. SEM Machinery, SEM, their respective logos, trade dress as well as corporate and product identity used herein, are trademarks of Caterpillar (Qingzhou) Ltd. and may not be used without permission.
 Version: November 2017



SEM816D Track Type Tractor

SEM816D

Efficient: The electronically controlled hydrostatic drive system and multi functional joystick provide high levels of performance and maneuverability.

Comfortable Operation: The cabin is ergonomically designed for increased operator comfort and visibility. The advanced monitoring system tracks machine operating conditions and keeps the operator informed of all vital machines functions.

Reliable: The proven hydrostat design along with world class pump and motors provide a highly reliable tractor. The undercarriage components are designed for longer life versus the leading competitor.

Serviceability: The SEM tractors are designed for easy access to reduce overall maintenance time. The machines electronic control module allows for quick troubleshooting.

Website <http://www.semmachinery.com>



Cat® Product Link™

Cat® Product Link™ will support your business, and accurately convey information of the equipment to relevant personnel in a timely and effective manner for your better equipment management.



Hydrostatic Drive System



Upgraded hydrostatic system not only leverages Caterpillar automatic, dual path, hydrostatic drive with electronic control technology of the third generation TTT, but also increases efficiency and reliability.

- Adopt Rexroth German new generation one case drive pump to combine control valve, track motor, simplified hose line design, continue to increase the reliability.
- Caterpillar high pressure hose provides reliability and durability, Caterpillar control technology provides accurate control and high transmission efficiency.
- Integrated the hydrostatic oil tank and implement hydraulic oil tank to improve filtrated precision and cooling capability of hydraulic system, increasing reliability and reducing maintenance cost.
- Maintenance costs are reduced by 60% when compared competitors with torque converter and transmission and rear axle.
- Counter rotation, power turn and infinitely variable speed save lots of time, increasing working efficiency.

Comfortable Operation



- **Counter rotation**—Tracks counter rotate to provide best in class maneuverability.
- **Powered turn**—Machine maintains full power through turns to increase productivity.
- **Cruise control**—Operators can retain previous speed settings which makes operation easy.
- Multi-function joystick allows for counter-rotation, powered turn and cruise control.
- Pilot joystick control provides comfortable precise blade operation.

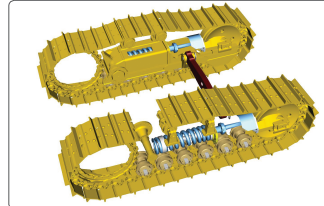
Semi-Universal Blade



Semi-Universal (SU) blade

- SU blade combines the excellent penetration of the S blade and the high production capacity of the U blade.
- Designed for superior load retention and penetration in tightly packed materials.
- L-shaped push arms bring the blade closer to the machine, providing excellent maneuverability, balance and blade penetration.
- Blades feature a strong box section design, made from high tensile strength steel to stand up to the most severe applications.

Undercarriage



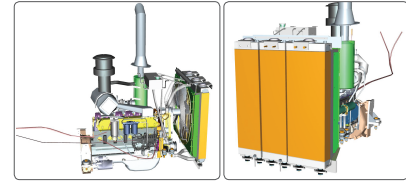
- Undercarriage is provided by China industry expert ensures high reliability and resistance to wear.
- Carrier rollers, track rollers and idle rollers are all maintenance free.
- Planetary final drive design delivers increased torque ratio for higher transmission efficiency and lower maintenance cost.
- Durable final drive bearings and multiple wet disc brakes provide reliability, reduce system heat and extend overall life.

Structures



- Machine structures are analyzed using Finite Element Analysis (FEA) and On Machine Stress Analysis (OMSA) to identify and protect high stress areas.
- Advanced structure welding technique, relieving welding stress.

Modular Radiator



- New advanced cooling system designed to meet -40°C to +50°C ambient temperatures capability.
- Modular designed radiator, easy to maintain, remove and repair.
- Radiator grill provides better heat dissipation, easy access for maintenance.

Maintenance



- Electronic Control Module (ECM) fault diagnosis system, automatic diagnosis of eight key parameters.
- Monitoring system provides three levels of alarm, to indicate fault diagnosis.
- Hydrostatic system has longer service interval (2000 hrs), reduces maintenance time by 50%.
- Implement valve mounted outside of hydraulic tank provides easy access to check and service.

Blade Options



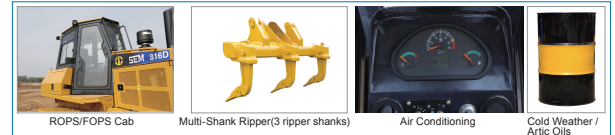
Semi-Universal blade (with hydraulic tilt)

Straight blade

U Blade

SU Forestry

Optional Attachments



ROPS/FOPS Cab

Multi-Shank Ripper(3 ripper shanks)

Air Conditioning

Cold Weather / Artic Oils