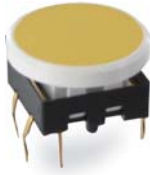


SPL15 Series

Pushbutton Switches



General Specifications

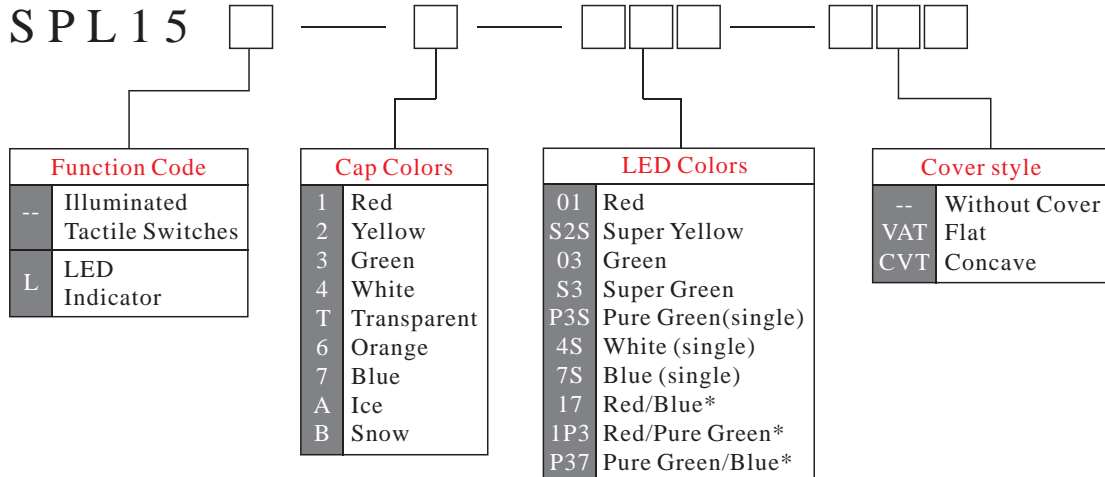
Circuit	:SPST
Current Rating	:50mA @ 12VDC
Contact Resistance	:100mOhm Max.(initial)
Insulation Resistance	:100MOhm Min.
Operating Force	:300gf ± 50gf
Total Travel	:0.3mm ± 0.1mm
Operating Life	:5,000,000 cycles Min.
Operating Temperature	:-25 deg.~+60 deg.
Solder Specifications	:260 deg. for 3 seconds

Materials

Cover	:Polycarbonate (PC)
Cap	:Polycarbonate (PC) or Acrylonitrile Butadiene Styrene(ABS)
Reflector	:Polycarbonate (PC)
Base	:Polyamide (PA)
Lamp Term.	:Phosphor bronze (PBS) with gold plating
Act. Dome	:Phosphor bronze (PBS) with silver plating
End Term.	:Brass with gold plating

HOW TO ORDER

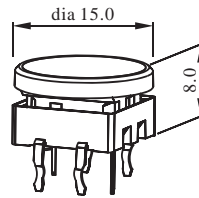
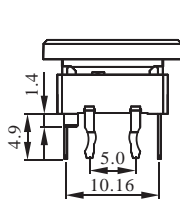
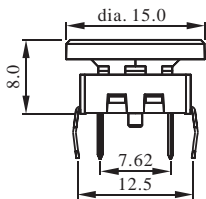
SPL15



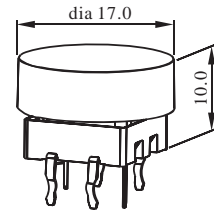
EXAMPLE : SPL15-1-01-VAT
Illuminated tact switch -Red cap-Red led-Transparent VAT cover.

*" not standard type
please inquire first

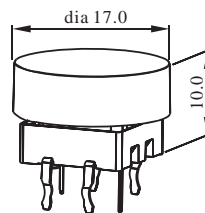
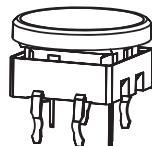
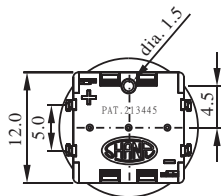
DIMENSION



Standard switch unit



Switch with VAT cover

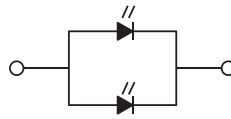


Switch with CVT cover

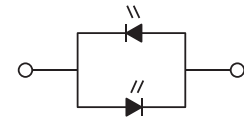
CONFIGURATION



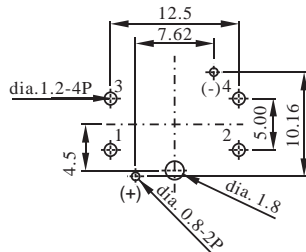
Single chip LED



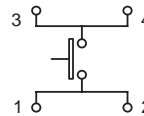
Single Color / 2chips led



Dual Colors LED



P.C.B. Mounting Holes



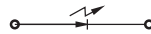
(SPST)
Contact Configuration

LED CHARACTERISTICS

The electrical specifications shown are determined at a basic temperature of 25 C. If the source voltage exceeds the rated voltage of LED, a ballast resistor must be connected in series with the LED.



Attention: LED are electrostatic sensitive devices



Single color	Forward Voltage V_f (V) at 20mA	Forward Current I_f (mA)	Reverse Voltage V_R (V)	Reverse Current I_R (uA) at $V_R=5V$
bi-Red	1.8~2.6	Typical 20mA 30 mA max.	5V	100uA max.
Super Yellow	2.0~2.5			
Green	2.2~2.6			
Super Green	2.0~2.6			
Pure Green	3.2~3.6			
Blue	3.5~4.0			
White	3.2~3.8			
Bicolor LED				
Red & Blue	Red 1.8~2.6 Blue 3.5~4.0	Typical 20mA 30 mA max.	5V	100uA max.
Red & Pure Green	Red 1.8~2.6 Pure Green 3.2~3.6			
Pure Green & Blue	Pure Green 3.2~3.6 Blue 3.5~4.0			

Notes: 1.LED circuit is isolated and requires external power source.

2.LED an integral part of the switch.

3.Emitting color:±20%

4.Forward Voltage:±0.1V

5..Liminous intensity / Luminous Flux:±20%