

Double Sided Printed Circuit Boards

Double Sided Printed Circuit Boards (also known as Double-Sided Plated

Thru or DSPT) circuits are the gateway to higher technology applications. They allow for closer (and perhaps more) routing traces by alternating between a top and bottom layer using vias. Today, double sided printed circuit board technology is perhaps the most popular type of PCB in the industry.

Benefits of Double Sided PCBs:

- More flexibility for designers
- Increased circuit density
- Relatively lower costs
- Intermediate level of circuit complexity
- Reduced board size (which can reduce costs)

Applications of Double Sided PCBs

There are near limitless applications for old and new designs. Fine line surface mount, ultra high copper build, high and low temperature, Solder coated, Silver, and Gold finishes are just a few examples of DSPT applications.

THE FOLLOWING ARE APPLICATIONS IN WHICH DOUBLE SIDED PCBs CAN BE USED:

- Industrial controls
- Power supplies
- Converters
- Control relays
- Instrumentation
- Regulators
- UPS systems
- Power conversion
- HVAC
- LED lighting
- Hard drives
- Printers
- Phone systems

- Power monitoring
- Automotive dashboards
- Line reactors
- Test equipment
- Amplifiers
- Traffic systems
- Vending machines

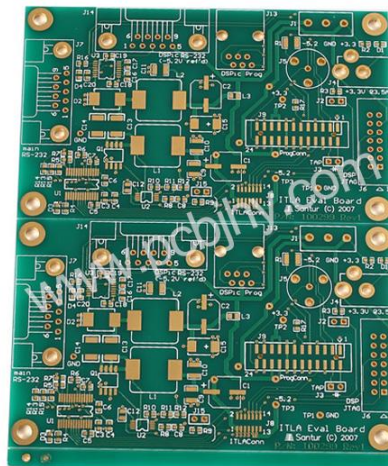
Image for Double Sided Printed Circuit Boards



JINGHONGYI PCB (HK) CO., LIMITED

Professional Quick Turn Prototypes

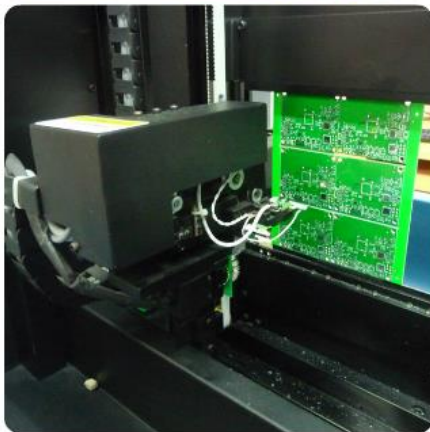
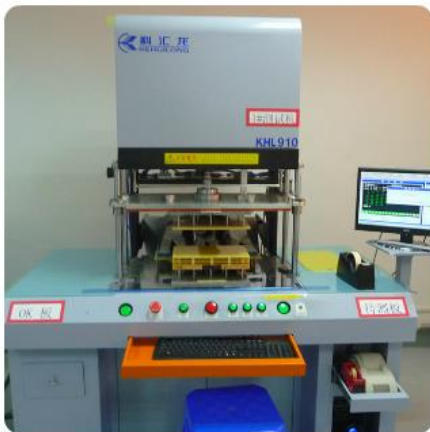
Small-medium Volume PCB Manufacturer



Product&Service

- Quick Turn PCB
- Rigid PCB
- Flexible PCB
- Rigid-flex PCB
- Aluminum PCB
- PCB Stencil

Factory Tour



Why choose us?

- Save money&time! Achieve peace of mind!
- A professional and trustworthy PCB prototype manufacturer.
- Fastest PCB Prototype.
- One stop solution for various PCB&SMT Stencil.
- Low cost for simple PCB.
- Affordable price for high-tech PCB.
- Minimum orders 1pcs.
- 24-hour online customer service.
- Professional PCB engineer for one-to-one service.
- Shipment on time.
- Guarantee good service and quality from PCB quotation to delivery.

Service features

- Custom service.
- You get what you pay for!
- 7*24 hours Online service.
- Professional Technical support.
- Fast turnarounds.
- Fast delivery.

Certification(UL:E466618, TS16949, ISO9001.RoHS)

<p>IPI ADDENDUM NOTICE OF COMPLETION AND AUTHORIZATION TO APPLY THE UL MARK</p> <p>Our Reference: File: E466618, Vol. 1 Project Number: 479827989 Your Reference: N/A Project Scope: USB - Addition of new PWB Types JPI-C and JPI-M</p> <p>The attention covers products manufactured at the following location: SHENZHEN JINGHONGYI AVI CIRCUIT CO., LTD 2# Chen 4# NO.15# Building Wansha, Tangyu Industry Shipping Station, Shenzhen Guangdong, China 518057</p> <p>Before you begin shipping product with the UL Mark at the above manufacturing location, an Initial Production Inspection (IPI) must be successfully performed by a UL representative at the location.</p> <p>This IPI is intended to confirm that your manufacturing location is capable of producing a product in accordance with UL's requirements. YOU MAY NOT SHIP PRODUCTS WITH THE UL MARK UNTIL THE IPI HAS BEEN COMPLETED AND UL HAS FOUND THE PRODUCTS AT THE FACTORY TO COMPLY WITH OUR REQUIREMENTS. Once the IPI has been successfully completed, you will be granted authorization to ship products bearing the UL Mark.</p> <p>Instructions for the IPI will be sent to our inspection center nearest to you. The Inspection Center will contact you directly to make arrangements for the IPI.</p> <table border="1"> <tr> <td>工厂名称:</td> <td>Shenzhen Inspection Center (For Manufacturer No. 974660)</td> </tr> <tr> <td>工厂地址(中文):</td> <td>深圳市宝安区西乡街道西乡社区西乡大道15号15栋1505室</td> </tr> <tr> <td>工厂地址(英文):</td> <td>AVI, Gateway 15# Building, Koyan Road, Nanshan District, Shenzhen, China (P.R. China)</td> </tr> <tr> <td>工厂电话(中文):</td> <td>深圳市宝安区西乡街道西乡社区西乡大道15号15栋1505室</td> </tr> <tr> <td>工厂电话(英文):</td> <td>深圳市宝安区西乡街道西乡社区西乡大道15号15栋1505室</td> </tr> <tr> <td>工厂网址:</td> <td>www.jhy.com</td> </tr> </table>	工厂名称:	Shenzhen Inspection Center (For Manufacturer No. 974660)	工厂地址(中文):	深圳市宝安区西乡街道西乡社区西乡大道15号15栋1505室	工厂地址(英文):	AVI, Gateway 15# Building, Koyan Road, Nanshan District, Shenzhen, China (P.R. China)	工厂电话(中文):	深圳市宝安区西乡街道西乡社区西乡大道15号15栋1505室	工厂电话(英文):	深圳市宝安区西乡街道西乡社区西乡大道15号15栋1505室	工厂网址:	www.jhy.com	<p>CERTIFICATION EUROPE <i>Certificate of Registration</i></p> <p>Certificate No.: 10134537IATF</p> <p>This is to Certify that the Quality Management System of Shenzhen Jing Hongyi Circuit Co., Ltd. No. 15 plant, 4 Southwest side, Tang Fu Yu Industrial Area Wansha Industrial Park, Shajing Street, Baoan District, Shenzhen</p> <p>Has been audited to the following Quality Management System standard: IATF 16949:2016</p> <p>This system is valid for the Technology development, production and sales of circuit board</p> <p>Date of issue: Apr. 26, 2018 Date of expiry: Apr. 19, 2021</p> <p>This certificate will not remain valid only if the certified organization accepts at least one surveillance audit annually within the validity period of the certificate in which the surveillance audit conforming mark is in the designated position on the certificate.</p> <p>Issued by: ramo</p> <p>12months 24months</p> <p>CERTIFICATION EUROPE HONGKONG LIMITED WWW.CE-UK.COM</p>	<p>SGS</p> <p>Test Report No. SXZEC1701145601 Date: 24 Nov 2017 Page 1 of 6</p> <p>SHENZHEN JINGHONGYI CIRCUIT CO., LTD 4# NO. 15 OF BUILDING WANSHA TONGFUYU INDUSTRY SHAJING BAOAN SHENZHEN GUANGDONG CHINA</p> <p>The following sample(s) was/were submitted and identified on behalf of the client as: PCB</p> <p>SGS Job No.: R917-011000 - SZ Date of Sample Received: 21 Nov 2017 Twisting Period: 21 Nov 2017 - 24 Nov 2017 Test Requested: Selected test(s) as requested by client. Test Method: Please refer to test page(s). Test Results: Please refer to test page(s). Conclusion: Based on the performed tests on submitted sample(s), the results of Lead, Mercury, Cadmium, Hexavalent chromium, Polychlorinated biphenyls (PCBs), Polychlorinated dibenzofuran (PCDFs) and Phthalates such as Bis(2-ethylhexyl) phthalate (DEHP), Diethyl phthalate (DEP), Dibutyl phthalate (DBP), and Diethyl phthalate (DEHP) comply with the limits as set by RoHS Directive (EU 2015/863 amending Annex II to Directive 2011/65/EU).</p> <p>Signed for and on behalf of SGS-CSTC Standards Technical Services Co., Ltd. Shenzhen Branch</p> <p><i>Kenny</i> Kenny LI Approved Signatory</p> <p>SGS-CSTC Standards Technical Services Co., Ltd. Shenzhen Branch 15/F, Building 15, Wansha Tongfuyu Industry Park, Shajing Street, Baoan District, Shenzhen, Guangdong, China Tel: +86 (0)755 2658 8888 Fax: +86 (0)755 2658 8889 Email: sz@sgs.com.cn</p>
工厂名称:	Shenzhen Inspection Center (For Manufacturer No. 974660)													
工厂地址(中文):	深圳市宝安区西乡街道西乡社区西乡大道15号15栋1505室													
工厂地址(英文):	AVI, Gateway 15# Building, Koyan Road, Nanshan District, Shenzhen, China (P.R. China)													
工厂电话(中文):	深圳市宝安区西乡街道西乡社区西乡大道15号15栋1505室													
工厂电话(英文):	深圳市宝安区西乡街道西乡社区西乡大道15号15栋1505室													
工厂网址:	www.jhy.com													

Electronics Fair

We took part in the famous exhibitions (As a PCB manufacturer) over the past years and got high appreciation from the top experts and customers, as well as cooperated tightly with them.



PCB Shipment

JHY PCB offers flexible shipping methods for our customers, you may choose from one of the methods below.



Shipping Process

After production and testing, your PCB orders will be sent to our shipping department. As the quick turn PCB manufacturer, JHY PCB shipping department will ship your PCB quickly without any pending.

JHY PCB 's Packing Way

- Use one professional PCB vacuum bag, with desiccant inside. Vacuum compressed totally.
- Paste label and RoHs mark. Use second vacuum bag to protect boards again, vacuum compressed, make sure no exception.
- Microsection report and Tin testing board are put together with PCB in cartons. COC (Certificate of Conformity) will be sent to customer by email in PDF.
- Several layers of thick EPE(Expandable polyethylene) are filled fully in gaps between PCBs and cartons. The thickness of 1 layer EPE is 10mm.
- Neutral Packing is adopted if no special requirements. Strong and thick cartons(Thickness:10mm,7 layers). Different sizes of cartons are designed to meet demand of different PCB size. All package are within weight limit of cartons. For mass production order, no exceed 21kg per carton normally.
- All cartons sealed with strong adhesive tape should be sealed twice so as to make them more durable.
- Solid PP/PET strapping is used outside of cartons.
- Shipping mark, fragile mark and postcode label are all pasted clearly.

Whatever we do or whatever we think of is to make sure boards are shipped to customer safely and quickly.

How to ship your PCB?

- Firstly, JHY PCB shipping department will print order address and invoice.
- Secondly, JHY PCB will set the shipment information on the Logistics company website.
- Thirdly, the Logistics company staff will collect the package from JHY PCB and ship it to you.

Shipment Term

With the purpose of better customer service and meeting the customer demand, JHY PCB provides following shipping methods.

JHY PCB is experienced in exporting. For PCB Prototype and small-medium volume PCB order, we have stable and long-term good relationship with forwarder, such as international express company DHL, FedEx, TNT, UPS. For mass production order, we have famous and reliable shipping company for support.

FAQ

Q1: What is your minimum order quantity?

A: Our MOQ is 1 PCS.

Q2: Do you accept PCB design with different boards on one panel?

A: Of course, we can do different boards on the same panel.

Q3. Are my Gerber Files safe?

A: We protect the intellectual property for customers in the whole process. All documents from customers are never shared with any third parties.

Q4: What is needed for quotation?

A: Quantity, PCB Gerber file, Technical requirements(material, board thickness, surface finish, copper thickness, solder mask color, silkscreen color,...)

Q5. How to quote shipping cost?

A: The shipping cost is determined by the shipment way(forwarder name, delivery days), destination, weight&dimension of packages. If you use your own forwarder, please inform us.

