

Best BGA PCB Prototype Circuit Board manufacture services

A **PCB Prototype** is an early sample, model, or release of a product built to test a concept or process or to act as a thing to be replicated or learned from. A PCB Prototype is generally used to evaluate a new design to enhance precision by system analysts and users. Prototyping serves to provide specifications for a real, working system rather than a theoretical one. In some design workflow models, creating a prototype (a process sometimes called materialization) is the step between the formalization and the evaluation of an idea.

The BGA is descended from the pin grid array (PGA), which is a package with one face covered (or partly covered) with pins in a grid pattern which, in operation, conduct electrical signals between the integrated circuit and the printed circuit board (**BGA PCB Prototype**) on which it is placed. In a BGA the pins are replaced by pads on the bottom of the package, each initially with a tiny solder ball stuck to it. These solder spheres can be placed manually or by automated equipment, and are held in place with a tacky flux. The device is placed on a PCB with copper pads in a pattern that matches the solder balls. The assembly is then heated, either in a reflow oven or by an infrared heater, melting the balls. Surface tension causes the molten solder to hold the package in alignment with the circuit board, at the correct separation distance, while the solder cools and solidifies, forming soldered connections between the device and the PCB.

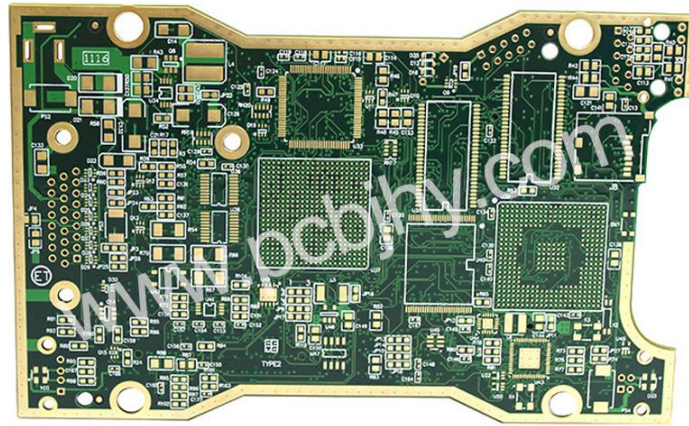
In more advanced technologies, solder balls may be used on both the PCB and the package.

Also, in stacked multi-chip modules, solder balls are used to connect two packages.



JINGHONGYI PCB (HK) CO., LIMITED

Professional Quick Turn Prototypes
Small-medium Volume PCB Manufacturer



Product&Service

- Quick Turn PCB
- Rigid PCB
- Flexible PCB
- Rigid-flex PCB
- Aluminum PCB
- PCB Stencil
- Multilayer PCB

Factory Tour



BGA PCB Prototype Circuit Board manufacture capability

Item	Manufacturing Capability
Type	BGA PCB Prototype
Layers	12 layer PCB
Base Material	FR4 Tg180
Dielectric	Prepreg
Board Thickness	2.4mm±10%
Copper Weight	1oz
Surface Finish	ENIG 3U"
Minimum trace Width/Spacing	0.1/0.1mm(4/4mils)
Solder Mask Color	Green
Silkscreen Color	White

Min. Hole Size	0.15mm
Hole Copper Wall Thickness	25.4um
Controlled impedance	Yes
Via in Pad	Yes
Flame Retardant Properties	94 V-0
Application	Instruments and Apparatus

Why choose us?

- A professional and trustworthy PCB prototype manufacturer.
- Fastest PCB Prototype.
- One stop solution for various PCB&SMT Stencil.
- Low cost for simple PCB.
- Affordable price for high-tech PCB.
- Minimum orders 1 pcs.
- 24-hour online customer service.
- Professional PCB engineer for one-to-one service.
- Shipment on time.
- Guarantee good service and quality from PCB quotation to delivery.

Certification(UL:E466618, TS16949, ISO9001.RoHS)

the quick turn PCB manufacturer, JHY PCB shipping department will ship your PCB quickly without any pending.

JHY PCB 's Packing Way

- Use one professional PCB vacuum bag, with desiccant inside. Vacuum compressed totally.
- Paste label and RoHs mark. Use second vacuum bag to protect boards again, vacuum compressed, make sure no exception.
- Microsection report and Tin testing board are put together with PCB in cartons. COC (Certificate of Conformity) will be sent to customer by email in PDF.
- Several layers of thick EPE(Expandable polyethylene) are filled fully in gaps between PCBs and cartons. The thickness of 1 layer EPE is 10mm.
- Neutral Packing is adopted if no special requirements. Strong and thick cartons(Thickness:10mm,7 layers). Different sizes of cartons are designed to meet the demand of different PCB size. All package are within weight limit of cartons. For mass production order, no exceed 21kg per carton normally.
- All cartons sealed with strong adhesive tape should be sealed twice so as to make them more durable.
- Solid PP/PET strapping is used outside of cartons.
- Shipping mark, fragile mark and postcode label are all pasted clearly.

Whatever we do or whatever we think of is to make sure boards are shipped to customer safely and quickly.

How to ship your PCB?

- Firstly, JHY PCB shipping department will print order address and invoice.
- Secondly, JHY PCB will set the shipment information on the Logistics company website.
- Thirdly, the Logistics company staff will collect the package from JHY PCB and ship it to you.

Shipment Term

With the purpose of better customer service and meeting the customer demand, JHY PCB provides following shipping methods.

JHY PCB is experienced in exporting. For PCB Prototype and small-medium volume PCB order, we have a stable and long-term good relationship with forwarder, such as international express company DHL, FedEx, TNT, UPS. For mass production order, we have famous and reliable shipping company for support.

FAQ

Q1: What is your minimum order quantity?

A: Our MOQ is 1 PCS.

Q2: Do you accept PCB design with different boards on one panel?

A: Of course, we can do different boards on the same panel.

Q3. Are my Gerber Files safe?

A: We protect the intellectual property for customers in the whole process. All documents from customers are never shared with any third parties.

Q4: What is needed for quotation?

A: Quantity, PCB Gerber file, Technical requirements(material, board thickness, surface finish, copper thickness, solder mask color, silkscreen color,...)

Q5.How to quote shipping cost?

A: The shipping cost is determined by the shipment way(forwarder name, delivery days), destination, weight&dimension of packages. If you use your own forwarder, please inform us.

