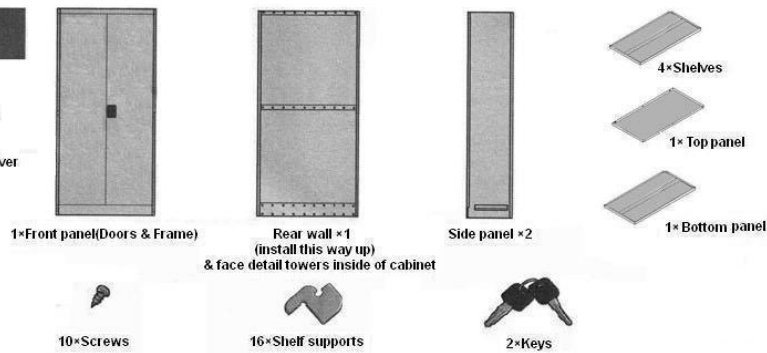


## STEP 1

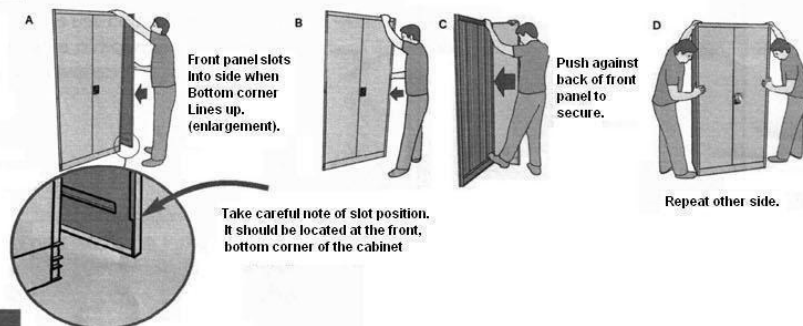
### • CHECK PARTS LIST

- Tools required
- 1×Phillips screwdriver



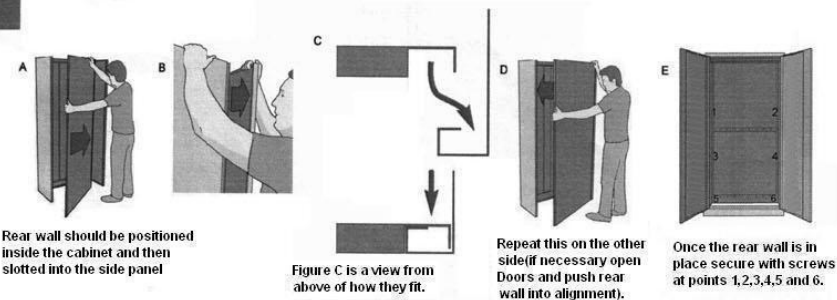
## STEP 2

### • FITTING FRONT PANEL TO SIDE PANEL



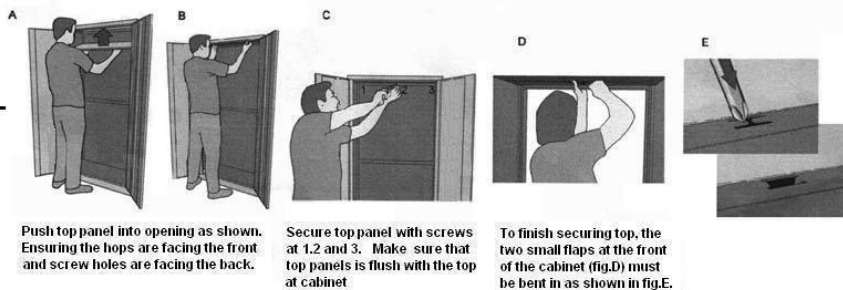
## STEP 3

### • FITTING REAR WALL TO SIDES AND SECURING



## STEP 4

### • FITTING AND SECURING TOP PANEL

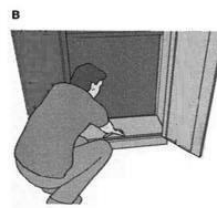


### STEP 5

#### • FITTING FLOOR PANEL



The floor panel is fitted at the bottom inside the cabinet, as shown in figure A. The edge of the floor panel slots into grooves on the side of the cabinet.

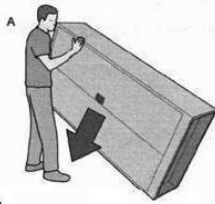


The floor panel should sit neatly at the bottom of the cabinet.

PLEASE NOTE: Make sure you are using a floor panel not a shelf part.

### STEP 6

#### • SECURING THE BASE



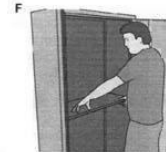
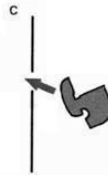
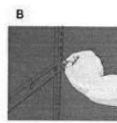
To secure the cabinet it needs to be placed on its side in order to allow access to the base



Then secure the base and rear wall with screw as shown (point 1).

### STEP 7

#### • FITTING THE SHELVES



To fit a shelf, four shelf supports need to be placed at equal heights around the inside of the cabinet (fig.A,B.). The shelf supports fit in as shown in fig. C,D and E.

Place shelves on pre-positioned shelf supports.

### STEP 8



Finished size:  
1850mm high ×  
900mm wide ×  
400mm deep.