

# Test Report

No.BCTC-FYC170112970R

Date:Dec. 05, 2017

Page 1 of 6

**Applicant** : shanghai lulu toy car co., Ltd.

**Address** : Room 606, Building One, Lane 105, Jiuting Street, Songjiang Aera, shanghai

**The submitted sample and sample information was/were submitted and identified by/on the behalf of the client**

**Sample name** : EPP Blocks

**Type /model** : basic type

**Manufacturer** : shanghai lulu toy car co., Ltd.

**Address** : Room 606, Building One, Lane 105, Jiuting Street, Songjiang Aera, shanghai

**Sample received date** : Nov. 29, 2017

**Testing period** : Nov. 29, 2017 - Dec. 05, 2017

Executive Summary:	
TEST REQUEST	CONCLUSION
<b>European Standard on Safety of Toys</b>	
- EN 71-1:2014 Mechanical and Physical Properties	PASS
- EN 71-2:2011+A1:2014 Flammability of Toys	PASS
- EN71-3:2013+A2:2017 Migration of certain elements	PASS
For chemical test, the tested component(s) is/are identified by the applicant.	

\*\*\*\*\*For more detailed information, please refer to the next page\*\*\*\*\*

Tested by Judy Zou



Approved by Linhang

**Lab:Shenzhen BCTC Testing Co.,Ltd.**

Add:BCTC Building & 1-2F,East of B Building,pengzhou Industrial,Fuyuan 1st Road,  
Qiaotou Community,Fuyong Street, Bao 'an District,Shenzhen,china  
Tel : (86)0755-33229357 Fax : 0755-33229357

Hotline  
400 -788 -9558  
www.bctc-lab.com.cn



# Test Report

No.BCTC-FYC170112970R

Date:Dec. 05, 2017

Page 2 of 6

**Tested Sample/Part Description:**

Yellow foam

**Test Result(s):**

◆ **Mechanical and physical properties**

As specified in European Standard on Safety of Toys EN 71 part 1: 2014.

Clause	Description	Assessment
4	General requirements	
4.1	Material cleanliness	Pass
4.7	Edges	Pass
6	Packaging <b>Remark:</b> The packaging of toys shall conform to the following requirements: a) Bags made of flexible plastics with an opening perimeter greater than 380 mm used for external or internal packaging, shall have an average sheet thickness of 0,038 mm or more when tested according to 8.25.1 (plastic sheeting, thickness). b) Bags made of flexible plastics with an opening perimeter greater than 380 mm shall not have a drawstring or cord as a means of closing. c) The requirements in 5.10 (small balls) apply to packaging and packaging components that are small balls regardless of the intended age group of the toy. d) Regardless of the intended age group of the toy, any separable part of its packaging, which is a small ball or that has a cylindrical shape with a rounded end shall not pass entirely through template E when tested according to 8.32.1 (small balls and suction cups). This requirement does not apply to parts with a major dimension of 64 mm or more, or parts that are attached to another part of the packaging with an attachment that does not break when tested according to 8.3 (torque test) and 8.4.2.1 (tension test, general). e) The requirements in 5.12 (hemispheric shaped toys) apply to hemispheric- shaped containers that are part of the packaging for toys intended for children under three.	Pass



# Test Report

No.BCTC-FYC170112970R

Date:Dec. 05, 2017

Page 3 of 6

Clause	Description	Assessment
7	<p>Warnings and instructions for use</p> <p><b>Remark:</b></p> <p>—Toys made available on the market shall bear the CE marking. The CE marking shall be affixed visibly, legibly and indelibly to the toy, to an affixed label or to the packaging. In the case of small toys and toys consisting of small parts, the CE marking may alternatively be affixed to a label or an accompanying leaflet. Where specific legislation does not impose specific dimensions, the CE marking shall be at least 5 mm high.</p> <p>—The manufacturer's name, registered trade name or registered trade mark and the address at which the manufacturer can be contacted shall be indicated on the toy or, where that is not possible, on its packaging or in a document accompanying the toy. This requirement applies also to the name and address etc. of any importer.</p> <p>—Manufacturers shall ensure that their toys bear a type, batch, serial or model number or other element allowing their identification, or where the size or nature of the toy does not allow it, that the required information is provided on the packaging or in a document accompanying the toy.</p> <p>—Manufacturers and importers shall ensure that the toy is accompanied by instructions and safety information in a language or languages easily understood by consumers, as determined by the Member State concerned.</p> <p>—A Member State may, within its territory, stipulate that warnings and safety instructions shall be written in a language or languages easily understood by consumers, as determined by that Member State.</p>	Pass
7.1	<p>General</p> <p><b>Remark:</b> Warnings on toys shall not be misleading or incorrect. Toys intended for children under 36 months shall comply with the requirements in Clause 5 of this standard. A warning on a toy or its packaging does not release the manufacturer or his authorized representative from the obligation to meet these requirements. The warnings shall be preceded by the words 'Warning' or 'Warnings', as appropriate.</p>	Pass



# Test Report

No.BCTC-FYC170112970R

Date:Dec. 05, 2017

Page 4 of 6

Clause	Description	Assessment
7.2	<p>Toys not intended for children under 36 months</p> <p><b>Remark:</b> Toys which are not intended for, but might be dangerous for children under 36 months shall bear a warning, for example: "Not suitable for children under 36 months" or "Not suitable for children under three years" together with a brief indication of the specific hazard calling for this restriction. The age warning shall be clearly legible at the point of sale of the product and appear either on the toy itself or on its retail packaging. The indication of the specific hazard may appear on a leaflet or in the instructions for use.</p>	Pass

**Note:**

-Only applicable clause(s) was/ were shown.

◆ **Flammability of toys**

**As specified in European Standard on Safety of Toys EN 71 part 2:2011+A1:2014.**

Clause	Description	Assessment
4.1	General	Pass

**Note:**

4.1 The following materials shall not be used in the manufacture of toys:

- Celluloid (cellulose nitrate), except when used in varnish, paint or glue, or in balls of the type used for table tennis or similar games, and materials with the same behaviour in fire as celluloid. Specific materials to which the test flame is applied in order to check compliance of the toy with requirements in 4.2 to 4.5 are considered to comply with this requirement if the toy meets its appropriate requirements in 4.2 to 4.5;
- Materials with a piled surface which produce surface flash on the approach of a flame. Piled surfaces showing no momentary area of flame over the area of the piled surface remote from the test flame are considered to meet this requirement;
- Highly flammable solids.

In addition, toys shall not contain flammable gases, highly flammable liquids, flammable liquids, flammable gels except as provided for below:

- Flammable liquids, flammable gels and preparations supplied in sealed containers having a maximum volume of 15 ml per container;
- Highly flammable liquids and flammable liquids being entirely retained within a porous material in capillary channels of writing instruments;
- Flammable liquids with a viscosity greater than  $260 \times 10^{-6} \text{m}^2/\text{s}$  corresponding to a flow time of more than 38 s when determined in accordance with EN ISO 2431 using cup No. 6;

**Lab:Shenzhen BCTC Testing Co.,Ltd.**



# Test Report

No.BCTC-FYC170112970R

Date:Dec. 05, 2017

Page 5 of 6

– Highly flammable liquids contained in toys covered in EN 71-5.

NOTE: Different legal requirements may exist in non-EU countries.

## ◆ Migration of certain elements

As specified in European standard on safety of toys EN 71-3:2013+A2:2017 - Migration of certain elements, acid extraction method was used and toxic elements content were determined by ICP-OES, ICP-MS, HPLC-ICP-MS and GC-MS.

### For Category III materials: Scraped off materials

#### Test Results:

Code	Soluble Element	Results (mg/kg)	LOD (mg/kg)	Limit (mg/kg)		
				Category I	Category II	Category III
				dry, brittle, powder-like or pliable toy material	liquid or sticky toy material	scraped-off toy material
1	Al	N.D.	0.073	5625	1406	70000
2	Sb	N.D.	0.014	45	11.3	560
3	As	N.D.	0.027	3.8	0.9	47
4	Ba	N.D.	0.027	1500	375	18750
5	B	N.D.	0.039	1200	300	15000
6	Cd	N.D.	0.059	1.3	0.3	17
7	Cr <sup>3+</sup>	N.D.	0.064	37.5	9.4	460
8	Cr <sup>6+</sup>	N.D.	0.026	0.02	0.005	0.2
9	Co	N.D.	0.019	10.5	2.6	130
10	Cu	N.D.	0.010	622.5	156	7700
11	Pb	N.D.	0.061	13.5	3.4	160
12	Mn	N.D.	0.050	1200	300	15000
13	Hg	N.D.	0.010	7.5	1.9	94
14	Ni	N.D.	0.042	75	18.8	930
15	Se	N.D.	0.147	37.5	9.4	460
16	Sr	N.D.	0.067	4500	1125	56000
17	Sn	N.D.	0.110	15000	3750	180000
18	Organic tin	N.D.	0.120	0.9	0.2	12
19	Zn	N.D.	0.097	3750	938	46000

Lab:Shenzhen BCTC Testing Co.,Ltd.

Add:BCTC Building & 1-2F,East of B Building,pengzhou Industrial,Fuyuan 1st Road,  
 Qiaotou Community,Fuyong Street, Bao 'an District,Shenzhen,china  
 Tel : (86)0755-33229357 Fax : 0755-33229357

Hotline  
 400 -788 -9558  
 www.bctc-lab.com.cn

# Test Report

No.BCTC-FYC170112970R

Date:Dec. 05, 2017

Page 6 of 6

**Note:**

-MDL = Method Detection Limit

-N.D. = Not Detected (<MDL)

-mg/kg = ppm = parts per million

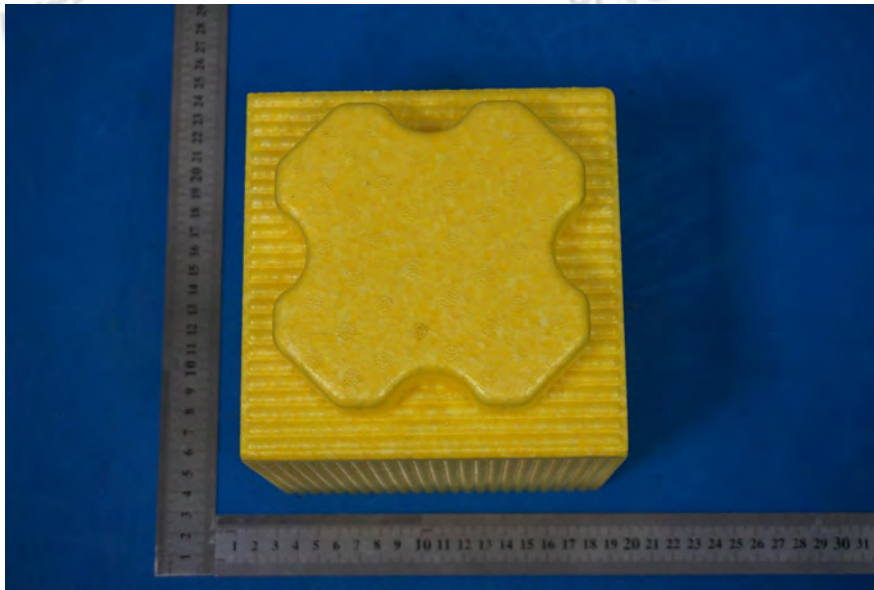
-Results shown are of the adjusted analytical results

- The migration of organic tin is expressed as tributyltin (TBT). where the tin content exceeded the limit of organic tin, ten organic tins listed in table were determined by GC-MS and the client should be noted there are other organic tins may be present in toy materials.

Organic tins tested under EN 71-3:2013+A2:2017:

Methyl tin (MeT), Butyl tin (BuT), Dibutyl tin (DBT), Tributyl tin (TBT),Tetrabutyl tin (TeBT), n-Octyl tin (MOT), Di-n-octyl tin (DOT), Di-n-propyl tin (DProT), Diphenyl tin (DPHT), Triphenyl tin (TPHT)

**Photograph of Sample**



\*\*\*\*\* End of Report \*\*\*\*\*