

强力粉碎机RG-26E/36E  
Powerful granulator



强力粉碎机RG-26G/36G/46G  
Powerful granulator



静音集中粉碎机RG-26GQ/36GQ  
Soundproof centralized granulator

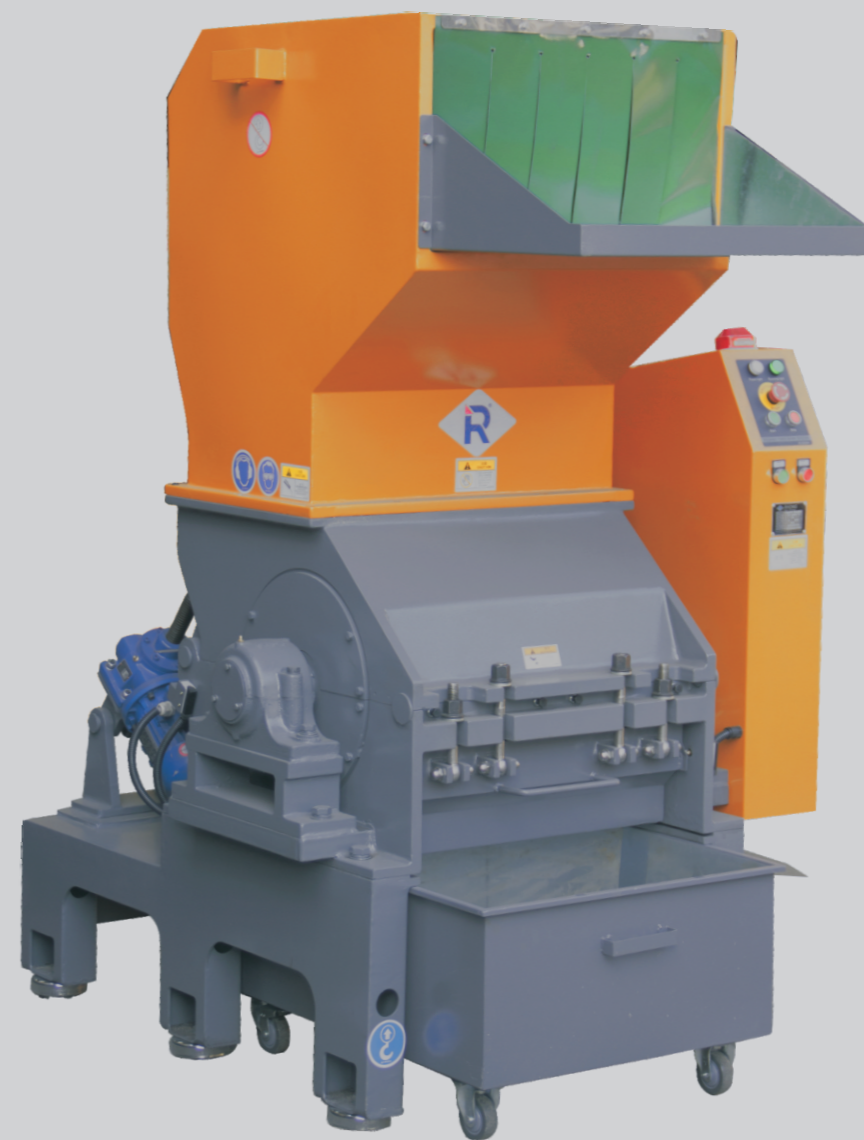


强力粉碎机适用于破碎不同种类的软、硬塑料，将块状、球状、条状以及水口料等塑胶次品、废品，提高了塑料利用率。

静音集中粉碎机在粉碎过程中声音进一步降低，满足不同客户的要求。  
Description :

Plastic powerful granulator apply to crushing different kinds of soft,hard plastics blocks,balls, stub bars and nozzle material etc.,improve plastic utilization.

Soundproof centralized granulator is with lower noise function,can meet different customers requirement.



宁波北仑日宏机械制造有限公司  
Ningbo Beilun Rhong Machinery Manufacturing Co.,Ltd

地址：浙江宁波北仑小港街道东岗碶  
Donggangqi,Xiaogang Subdistrict,Beilun,  
Ningbo,Zhejiang Province,China.  
T +86-574-55019010 , MB:0086 137 7723 9417  
F +86-574-55019017  
E-mail : rhong@plastic-auxiliary-equipment.com(EN)



Wechat



Website

更多咨询请访问：  
[www.rhongmachinery.com](http://www.rhongmachinery.com) (EN)

强力粉碎机RG-26E/36E  
Powerful granulator

强力粉碎机RG-26G/36G/46G  
Powerful granulator

静音集中粉碎机RG-26GQ/36GQ  
Soundproof centralized granulator

进料斗内层采用镀锌板制作,减少原料的污染。  
Inner feeding hopper is made of Galvanized plate material, reduce raw material pollution.

品牌电机,质量稳定,使用寿命长。  
Famous brand motor, stable quality, long time using

电动起落,开关进料斗更轻松。  
Motor driven system, better for opening and closing feeding hopper easily.

配置了可调节避震脚,减小了因地面不平而导致的震动与产生的噪音。  
Equip with adjustable shock absorber because of uneven ground, can reduce noise and vibration.

轴承安装在机体外,粉尘不易侵入,散热良好,保养及维护简便易行。  
Outside bearing design, hard to enter into dust, better cooling efficiency, maintainance.

进料斗与筛网架设有安全开关,保证在打开时,刀具停止运转。  
Safety switch for feeding hopper and screen bed, to make sure rotor stop running absolutely when opening the feeding hopper or screen bed.

进料口可按照客户要求加磁铁。  
Feeding mouth with optional purchase: add magnet block.

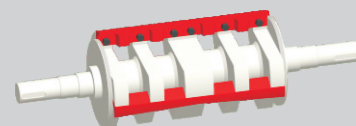
粉碎室采用中部半开结构,动定刀的更换更简单易行。  
Half-open structure in the middle of cutting chamber, better for replacing rotating and fixed blades.

电机设过载保护,保护电机安全。  
Overload device to protect motor.

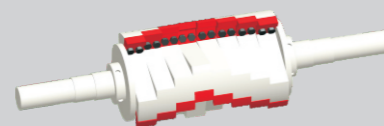
定刀设计在粉碎室上平面,更方便拆卸、更换、清扫。  
Fixed blades installed on the upper plane of the crushing chamber, better for disassemble, replace and clean.

标配人工接料箱,方便快捷。  
Standard allocation with filling box by manual.

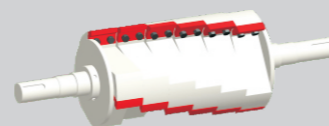
动刀具特殊设计,刃磨(A面)后不需调节刀具间隙,更方便拆卸,更换。刀具采用高铬钢材料,强度高,坚固耐用。  
Special designed rotating blades, no need to adjust gap after resharpening, easy to disassemble and replace blades, The blades are made of high chrome steel material, high strength, strong and durable.



RG-36G/46G  
片刀型 Paddle blades type



RG-26GA/36GA/46GA  
爪刀型 Staggered blades type



RG-26GB/36GB/46GB  
平刀型 Flat blades type

刀具采用“V”形切割技术,切割时物料从两侧向中心滑动,避免材料与机器侧壁的摩擦与堵塞。

多种刀架设计可供客户选择:

- 1.若为硬质球状料则选用爪刀型粉碎机;
- 2.若材料为薄壁壳管类、瓶类的产品需破碎回收要选用片刀型粉碎机;
- 3.粉碎普通片材、管材、型材及包装材料等制品两种(平、片刀型)粉碎机均可选用;

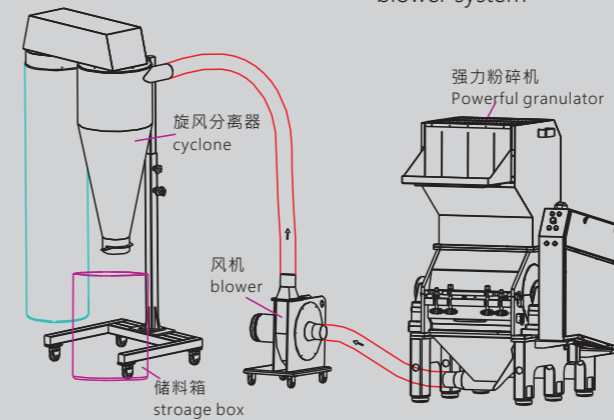
片刀型粉碎机是粉碎回收薄膜及薄片材的首选设备。

V type arrangement design, during crushing process, material will be crushed in claw blades center point, avoid friction and blockage between material and side wall.

How to choose the correct blades type:

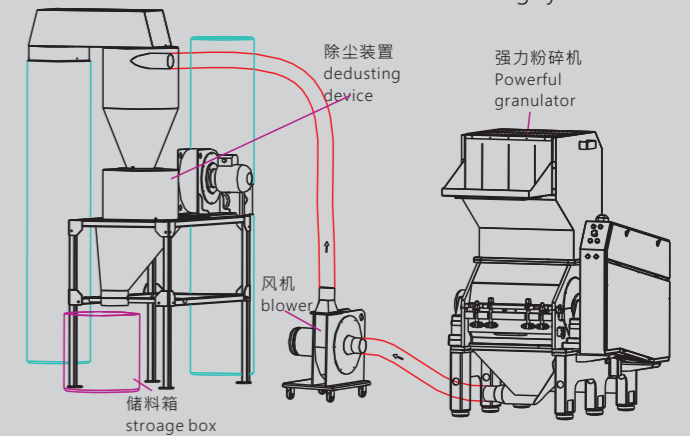
- 1.If hardness block material, please choose staggered blades type central granulators.
  - 2.If Thin-walled housing, bottles, please choose paddle blades type central granulators.
  - 3.If sheet, pipe, profile and package material, with two choice, flat or paddle blades type central granulators all ok.
- Attention: paddle blades type central granulators better for crushing film and thinner sheet.

强力粉碎机安装示意图  
----风机送料



Powerful granulator  
Installation diagram  
----blower system

强力粉碎机安装示意图  
---风机送料+除尘装置



Powerful granulator  
Installation diagram  
--blower system  
+dedusting system

**规格表 Specifications**

机型 Model		RG-2640G	RG-2650G	RG-3660G	RG-3680G	RG-4680G	RG-46100G
电机功率 Power	kw	7.5	11	15	22	30	37
主轴转速 Rotor speed	rpm	560	560	560	560	560	560
活动刀 Rotating blades	PCS			6 ●	6 ●	6 ●	6 ●
	-A PCS	24 ○	30 ○	36 ○	48 ○	48 ○	60 ○
	-B PCS	12 ●	15 ●	18 ○	24 ○	24 ○	30 ○
固定刀 Fixed blades	PCS	2	4	4	4	4	6
筛网孔径 Screen diameter	mm	Φ10	Φ10	Φ12	Φ12	Φ12	Φ12
粉碎室尺寸 Cutting chamber size	mm	270X400	270X500	370X600	370X800	480X800	480X1000
粉碎能力 Output	kg/h	300 ~ 550	400 ~ 650	400 ~ 700	600 ~ 900	700 ~ 1200	800 ~ 1600
粉碎时噪音 Noise	dB(A)	80 ~ 95	80 ~ 95	80 ~ 95	80 ~ 95	80 ~ 95	80 ~ 95
进料斗电动起落 Motor lifting device for hopper		●	●	●	●	●	●
人工接料箱 Material box		●	●	●	●	●	●
风机送料系统 Blower conveying system	-F	○	○	○	○	○	○
进料口加磁铁 magnet at feeding mouth		○	○	○	○	○	○
除尘装置 Dedusting device		○	○	○	○	○	○
重量 Weight	kg	550	650	1200	1350	1690	1850
外形尺寸(L×W×H) External size	mm	1315X960X1485	1315X1060X1485	1630X1185X1875	1630X1385X1875	1800X1430X2130	1800X1630X2130

产品规格若有变更,恕不另行通知。  
Please excuse for not note if some specifications of products are changed.

Note 注:

- 1) "●"为标配, "○"为选购。  
"●" is standard allocation, "○" is selection purchase.
- 2) 标配为片刀型结构, "-A"为爪刀型结构, "-B"为平刀型结构。  
"V" shaped paddle blades type is standard allocation, "-A" means claw blades type (staggered blades type), "-B" means flat blades type.
- 3) 最大粉碎量取决于筛网孔径及粉碎材料等因素。  
The max. shredding quantity depend on the mesh hole diameter and shredding material quality.
- 4) 机器电压规格为3Φ, 380V, 50Hz。  
The machine voltage specification is 3Φ, 380V, 50Hz.  
The voltage can be changed as you require.

