

RHD蜂巢除湿机  
Honeycle dehumidifier



输送一体式除湿干燥机  
All-in-one dehumidifier and loader

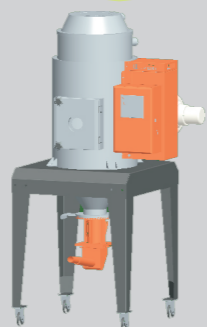


RCD箱型干燥机  
Chamber dryer



RDM 料斗干燥机  
Hopper dryer

RDM-U欧化干燥机  
Europeanization dryer



除湿干燥系列机型主要用于对因包装、运输或者回收受潮的的塑胶原料的进行干燥，以确保塑胶产品在成型过程中的质量。根据塑料原料的种类、使用环境,以及塑胶产品成型质量所需求的干燥程度，可选用除湿干燥系列机型中的相关设备，对相应的塑胶原料进行干燥处理。

Dehumidifier and dryer series are suitable for drying plastic dehumidified material caused by packing, transportation and retrieving, to ensure the quality of plastic products in the molding process. Dehumidifying & drying machines can choose the correct model according to different kinds of plastic material, different working conditions and different drying time requirement for different plastic products quality requirement.



宁波北仑日宏机械制造有限公司  
Ningbo Beilun Rhong Machinery Manufacturing Co.,Ltd

地址：浙江.宁波.北仑.小港街道.东岗碶.  
Donggangqi, Xiaogang Subdistrict, Beilun,  
Ningbo, Zhejiang Province, China.

T +86-574-55019010, +86-137 7723 9417  
F +86-574-55019017

E-mail: rhong@plastic-auxiliary-equipment.com



Wechat



Website

更多咨询请访问：

[www.rhongmachinery.com](http://www.rhongmachinery.com) (EN)

RHD蜂巢除湿机  
Honeycle dehumidifier  
输送一体式除湿干燥机  
All-in-one dehumidifier and loader  
箱型干燥机  
Chamber dryer  
料斗干燥机  
Hopper dryer  
欧化干燥机  
Europeanization dryer

Dehumidifier and dryer series  
除湿干燥系列

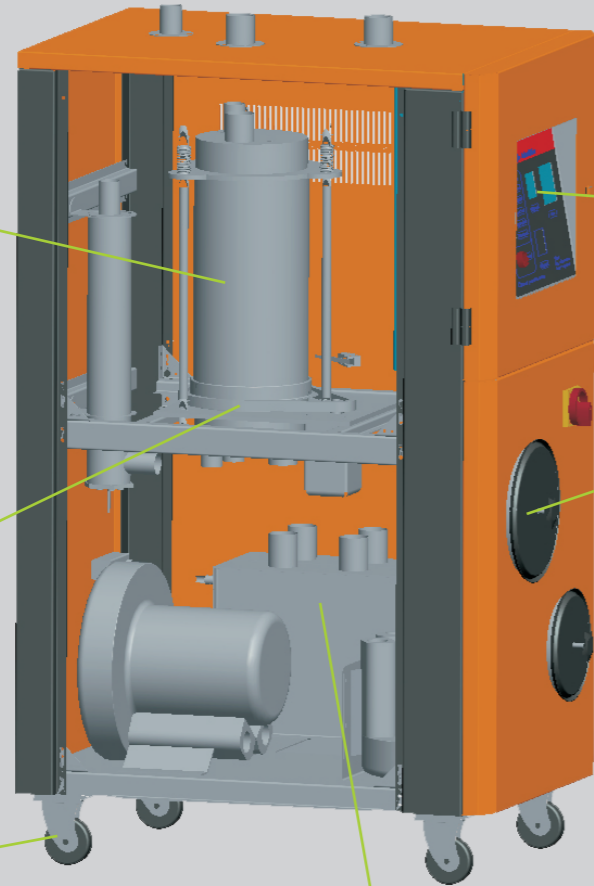
RHD系列蜂巢式除湿干燥机，可以与RDM系列料斗干燥机组合使用。它是能广泛对应从通用塑料制品到高端塑料制品成型的基础设备。它可对吸湿性较强的工程塑料（如PA、PCs、PBT、PET等）进行高效率的除湿干燥作业。它能够采用直接连接或集中干燥等任何方式与成形机连接

RHD series of honeycomb dehumidifier dryer, together with RDM series of hopper dryer, are used to dry hygroscopic engineer plastics (such as PA, PC, PBT, PET etc.) with high efficiency. They can connect directly with molding machine or centralized dry material

转轮蜂巢,处理风可达-40°C的露点,可选配蜂巢,使露点达-50°C以下  
Runner honeycomb, the dew point of processing wind can reach -40°C. Optional honeycomb is -50°C

独特链条与链轮传动设计可避免传统皮带在高温环境下易断裂的缺陷,运转稳定牢固  
Special chain-wheel transmission design with more stable performance, to avoid traditional belt's disadvantage under high temperature

万向脚轮,移动方便  
Universal casters, easy to move

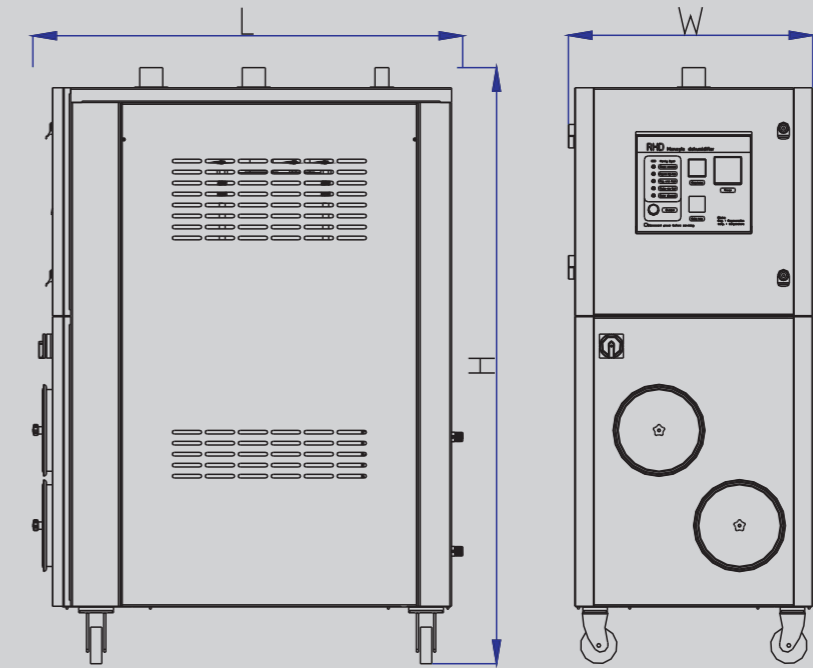


微电脑P.I.D温控仪,实时显示设定值与实际值  
P.I.D. temperature controller, Real-time display of actual and setting value

可拆空气滤清器,清理以及更换方便  
Detachable air filter, easy to clean and replace

双冷却器结构,以确保更低的回风温度及露点  
Double condenser design to ensure lower return air temperature and dew point

可选配露点仪,实时监测除湿效果  
Optional dew point gauge, Real-time monitoring of dehumidification



**规格表 Specifications**

机型 Model		RHD-30	RHD-50	RHD-80	RHD-120	RHD-150	RHD-200	RHD-300	RHD-400	RHD-500	RHD-700	RHD-1000	RHD-1500	RHD-2000	
干燥风量 Dry air capacity	m <sup>3</sup> /hr	30	50	80	120	150	12	300	400	500	700	1000	1500	2000	
干燥风车耗电量 Dryer power consumption	KW	0.37	0.37	0.75	0.75	1.5	2.2	3	4	5.5	5.5	5.5x2	5.5x2	5.5x4	
再生风车耗电量 Regeneration power consumption	KW	0.25	0.25	0.37	0.37	0.75	0.75	0.75	0.75	2.2	2.2	3	3	3x2	
再生电热耗电量 Regenerated heat power consumption	KW	3	3	3.5	3.5	4	5.4	7.5	7.5	10	10	20	20	20x2	
出入口之管径 Inlet & Outlet pipe dia.	inch	2	2	2	2	2.5	2.5	3	3	4	4	5	6	8	
重量 Weight	kg	20	25	32	35	55	150	160	230	240	260	240	260	240	
<b>外形尺寸 External size</b>															
高 H	mm	1000	1000	1430	1430	1640	1640	1700	1700	1850	1850	2100	2100	2230	
宽 W	mm	540	540	590	590	650	650	700	700	930	930	1450	1450	2150	
长 L	mm	700	700	910	910	1150	1150	1250	1250	1400	1400	2250	2250	2200	

产品规格若有变更,恕不另行通知。  
Please excuse for not note if some specifications of products are changed.

Note 注 :

- 1) The Max. drying capacity depend on many elements, such as material etc. 1) 最大干燥能力因材料等因素各异。
- 2) The machine voltage specification is 3Φ,380V,50Hz. The voltage can be changed as you require. 2) 机器电压规格为3Φ,380V,50Hz