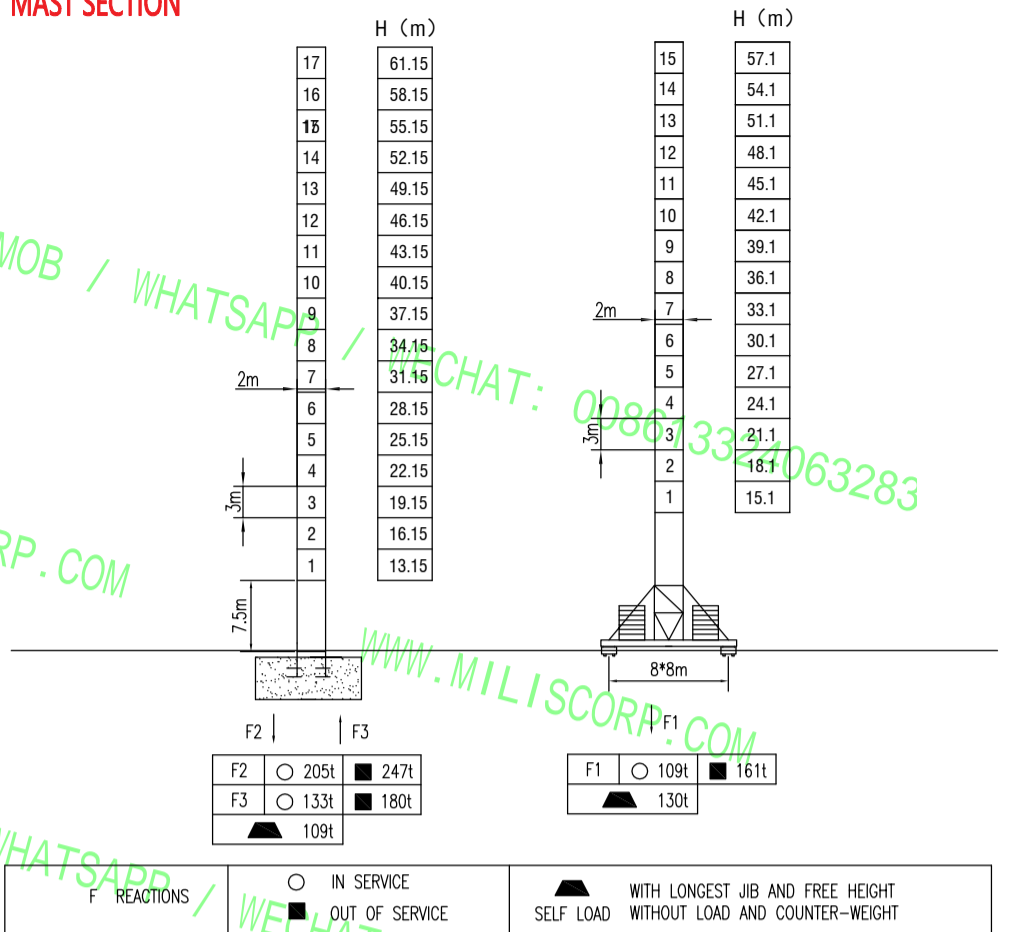
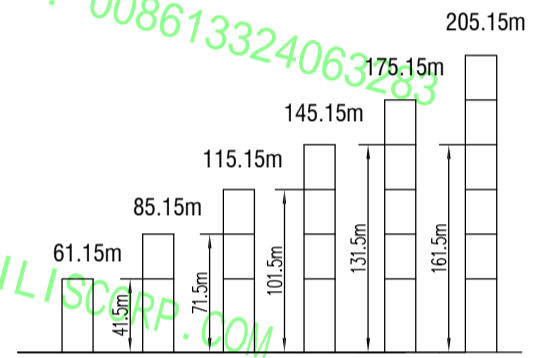


MAST SECTION



ANCHORAGES



MILISCORP

LOAD DIAGRAMS

Radius	R(Cmax)/m	15	20	25	30	35	40	45	50	55	60	65	70	75	m
75m	14.9 / 18.0	17.8	12.6	9.5	7.81	6.5	5.53	4.78	4.18	3.69	3.29	2.95	2.65	2.4	t
	26.7 / 9.0		9.0	8.11	6.8	5.83	5.08	4.48	3.99	3.59	3.25	2.95	2.7	t	
70m	16.1 / 18.0	18.0	13.98	10.67	8.47	7.16	6.21	5.29	4.65	4.13	3.68	3.32	3.0	t	
	29.3 / 9.0		9.0	8.77	7.46	6.41	5.59	4.95	4.43	3.98	3.62	3.3	t		
65m	16.9 / 18.0	18.0	14.79	11.32	9.01	7.65	6.55	5.69	5.01	4.45	3.99	3.6	t		
	30.8 / 9.0		9.0	7.95	6.85	5.99	5.31	4.75	4.29	3.9	t				
60m	17.4 / 18.0	18.0	15.35	11.79	9.42	8.01	6.86	5.97	5.26	4.68	4.2	t			
	32.7 / 9.0		9.0	8.31	7.16	6.27	5.56	4.98	4.5	t					
55m	17.9 / 18.0	18.0	15.83	12.18	9.75	8.31	7.17	6.23	5.5	4.9	t				
	33.7 / 9.0		9.0	8.61	7.47	6.53	5.8	5.2	t						
50m	18.3 / 18.0	18.0	16.24	12.53	10.05	8.59	7.49	6.46	5.7	t					
	34.6 / 9.0		9.0	8.89	7.79	6.76	6.0	t							
45m	18.7 / 18.0	18.0	16.73	12.93	10.4	8.86	7.69	6.65	t						
	35.4 / 9.0		9.0	7.99	6.95	t									

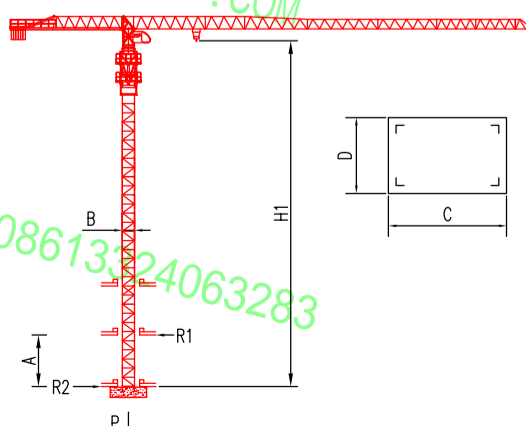
COUNTER-JIB BALLAST

Radius	Counter-jib Ballast (t)
75m	29.4t
70m	28.25t
65m	27.1t
60m	24.5t
55m	24.5t
50m	22.2t
45m	19.6t

TECHNICAL PARAMETER

MECHANISMS		0-3.2	0-76	0-108	0-1.6	0-38	0-54	m	kw
Hoisting	75LVF	8	4	2	16	8	4	> 800	75
Trolleying	7.5TVF	0-80							7.5
Slewing	9SVT	0-0.8							9*2
	RCV145	0-0.7							145NMx2
Travelling	5.5TVF	0-30							5.5x4
Power supply		380v.50Hz / 440v.60Hz							
Necessary electric power		140KVA							

INNER CLIMBING



A	12M-19m
B	2m
C	2.58m
D	2.17m
H1	
R1	
R2	
*P	

* No coefficient in service

* The technical information can not be published without approval. The specifications are not subject to legal constraints due to continually products improved, the performance data will be modified without notice.