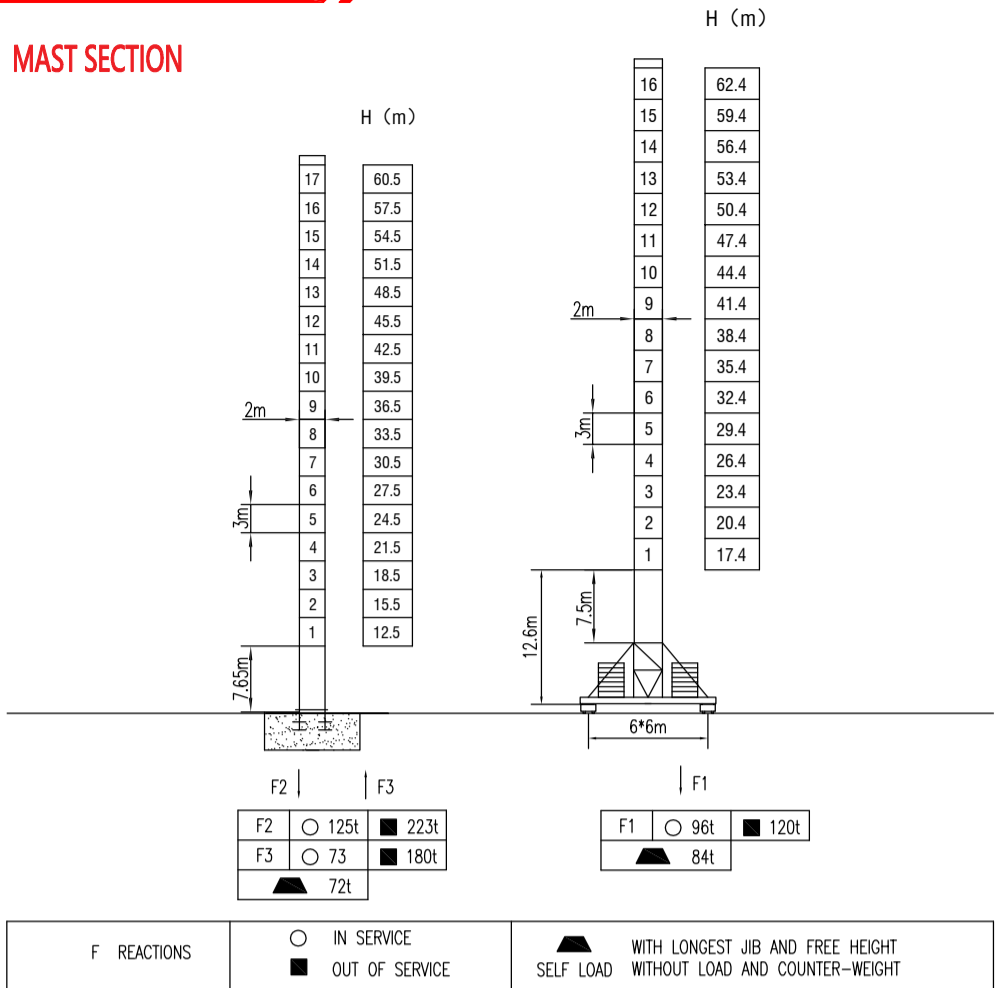
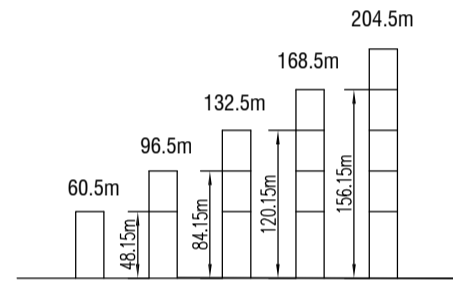


MAST SECTION



ANCHORAGES



Mail: miliscorp@miliscorp.com www.miliscorp.com
Tel: +86 24 3157 4487 Mob.: +86 153 8212 6422

LOAD DIAGRAMS

Radius	3.0	R(Cmax)/m/t	15	20	25	30	35	40	45	50	55	60	65	70	m
70m	☞	16.25/8.0	8.0	6.23	4.34	4.0	3.2	2.7	2.2	2.0	1.7	1.4	1.3	1.2	t
	☜	31.0/4.0			4.0	3.5	3.0	2.5	2.3	2.0	1.7	1.6	1.5		t
65m	☞	16.45/8.0	8.0	6.43	4.56	4.1	4.0	2.9	2.4	2.1	1.9	1.6	1.5		t
	☜	31.3/4.0			4.0	3.7	3.2	2.7	2.5	2.2	1.9	1.8			t
60m	☞	16.6/8.0	8.0	6.61	4.75	4.3	3.44	3.15	2.6	2.4	2.1	1.8			t
	☜	32.1/4.0			4.0	3.74	3.35	2.9	2.7	2.4	2.1				t
55m	☞	16.7/8.0	8.0	6.75	4.92	4.4	3.5	3.2	2.8	2.6	2.3				t
	☜	32.6/4.0			4.0	3.8	3.5	3.1	2.9	2.6					t
50m	☞	16.9/8.0	8.0	6.85	5.04	4.45	3.55	3.35	2.98	2.76					t
	☜	33.2/4.0			4.0	3.85	3.65	3.28	3.06						t
45m	☞	17.2/8.0	8.0	6.98	5.17	4.5	3.6	3.44	3.1						t
	☜	33.9/4.0			4.0	3.9	3.74	3.4							t

COUNTER-JIB BALLAST

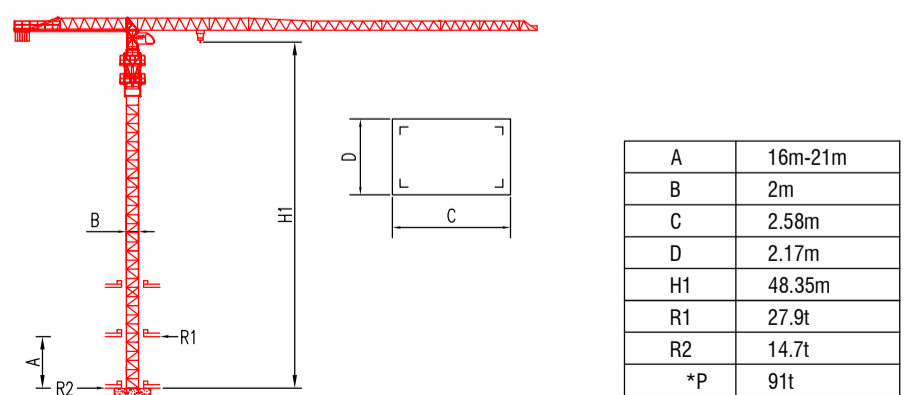
Radius	Counter-jib Ballast (t)
70m	14.04t
65m	12.85t
60m	11.66t
55m	10.76t
50m	9.82t
45m	7.9t

Mail: miliscorp@miliscorp.com www.miliscorp.com
Tel: +86 24 3157 4487 Mob.: +86 153 8212 6422

TECHNICAL PARAMETER

MECHANISMS		☞	☜	☞	☜	m	kw		
Hoisting	☞	37LVF	m/min	0-45	0-90	0-22	0-45	>550	45
			t	5	2.5	10	5		
Hoisting	☜	55RCS25	m/min	40	80	20	40	>500	41
			t	5	2.5	10	5		
Trolleying	☞	4TVF	0-55 m/min					4	
Slewing	☞	5.5SVF	0-0.8 r/min					5.5x2	
		RCV145	0-0.8 r/min					145NMx2	
Travelling	☞	4TRVF	0-12 m/min					4*4	
Power supply	380v.50Hz / 440v.60Hz								
Necessary electric power	70 KVA								

INNER CLIMBING
INNER CLIMBING



* No coefficient in service

* The technical information can not be published without approval. The specifications are not subject to legal constraints due to continually products improved, the performance data will be modified without notice.

Mail: miliscorp@miliscorp.com www.miliscorp.com
Tel: +86 24 3157 4487 Mob.: +86 153 8212 6422